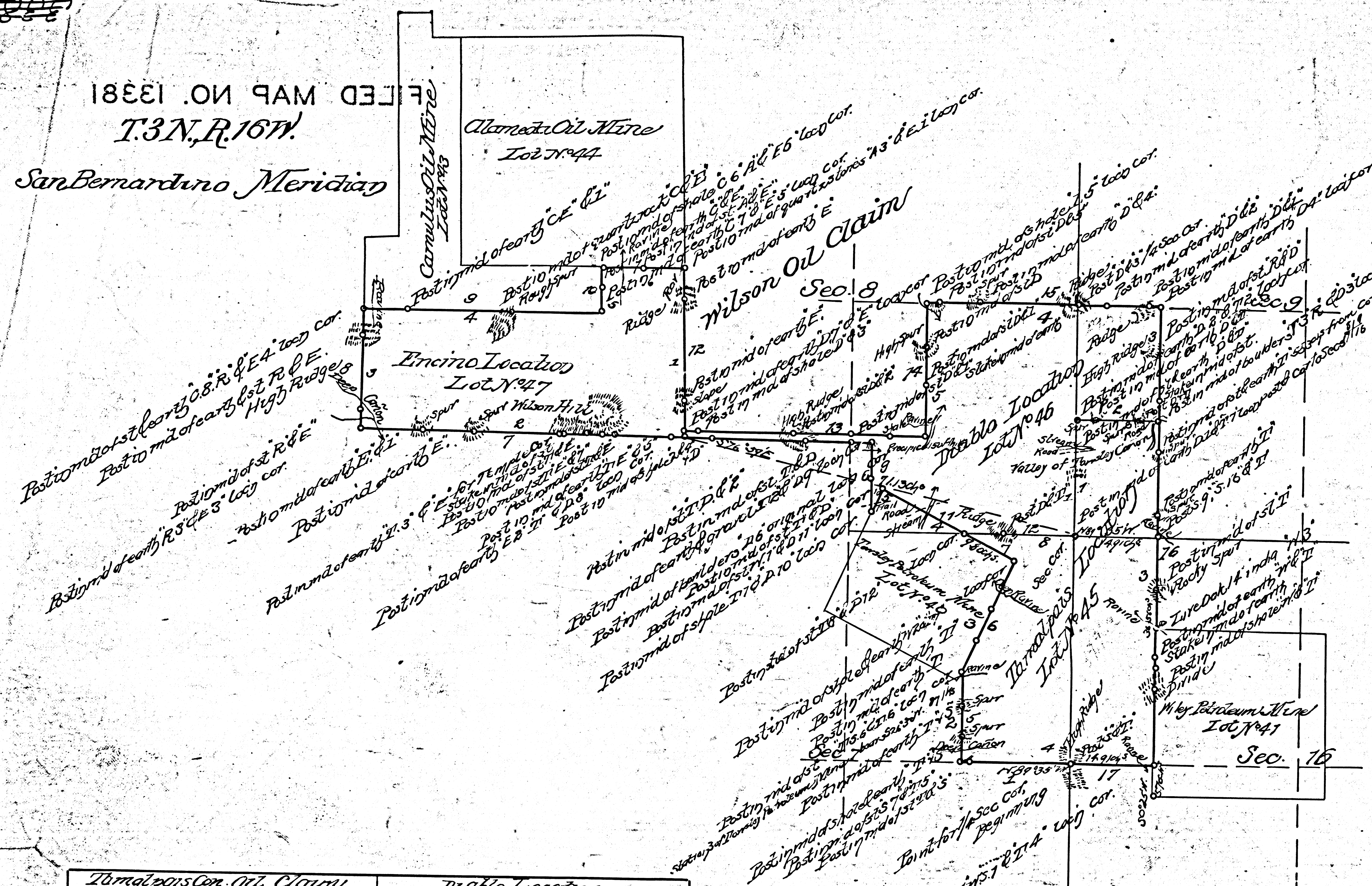


FILED MAP NO. 13381
T.3N., R.16W.
San Bernardino Meridian

FILED MAP NO. 13381
Survey No. 2582



PLAT
of the Claim of
the
Pacific Coast Oil Company
upon the
IM 63
Tamapais Con. Oil Claim
San Fernando Petroleum Mining District
Los Angeles County
CALIFORNIA.

Area of Tamapais Location	158.30 Acres
" " Diablo	151.30 "
" " Encino	135.52 "
" " Tamapais Con. Oil Claim	245.72 "

Tamapais Location Located February 25th 1885
Diablo " " February 25th 1885
Encino " " February 25th 1885
Application for survey filed March 5th 1885

Scale of Chains 16 Meters.
Meridian 14° 35' East.
Surveyed by
W. F. McClure
U.S. Deputy Mineral Surveyor
April 1889

The original field notes of the survey of the claim of
the Pacific Coast Oil Company
upon the Tamapais Con. Oil Claim
from which this plat was made, have been examined and
approved, and on file in this office, and I hereby certify that
they furnish such an accurate description of said mining claim
as will, if incorporated into a plat, serve fully to identify the
premises, and that such references made therein to natural objects
and permanent monuments as will perpetuate and fix the locus
thereof, I further certify that the value of the labor and improve-
ments placed thereon by the applicant or its grantors is not
less than five hundred dollars and that such improvements consist of
wells, pipe lines, etc.

As appears by the report of the deputy surveyor and the testimony
of the disinterested witnesses, and I further certify that this is a
correct plat of said mining claim, made in conformity with said
original field notes of the survey thereof.
U.S. Surveyor General for the San Francisco Cal., October 18th 1889

Tamapais Con. Oil Claim			Diablo Location				
1	N. 89° 35' W.	20.00	132.07	1	N. 1° 00' E.	20.21	1333.95
2	N. 0° 25' E.	76.20	1069.2	2	S. 89° 35' E.	14.69	969.5
3	N. 26° 30' W.	21.82	1441.4	3	N. 0° 25' E.	20.13	1328.6
4	N. 63° 30' W.	26.39	1741.7	4	N. 89° 35' W.	41.94	2768.
5	S. 26° 30' W.	4.71	310.9	5	S. 0° 25' W.	23.80	1570.8
6	N. 0° 25' E.	12.46	822.4	6	N. 89° 35' W.	42.38	2787.1
7	N. 89° 35' W.	90.76	5990.2	7	S. 0° 25' W.	1.02	673
8	N. 0° 25' E.	21.57	149.7	8	S. 89° 35' E.	33.23	2193.2
9	S. 89° 35' E.	42.48	2803.7	9	S. 0° 25' W.	12.46	822.4
10	N. 60° 25' E.	7.79	574.7	10	N. 26° 30' E.	4.71	310.9
11	S. 89° 35' E.	15.04	992.6	11	S. 63° 30' E.	16.59	1094.9
12	S. 0° 25' W.	28.29	1867.1	12	S. 89° 35' E.	19.22	1268.5
13	S. 89° 35' E.	42.38	2797.1	Encino Location			
14	N. 0° 25' E.	23.80	1570.8	1	S. 0° 25' W.	29.31	1934.5
15	S. 89° 35' E.	41.94	2768.	2	N. 89° 35' W.	57.53	3787
16	S. 0° 25' W.	80.47	5311.	3	N. 0° 25' E.	21.57	1419.7
17	N. 89° 35' W.	74.91	984.1	4	S. 89° 03' E.	42.48	2803.7
Tamapais Location			5	N. 0° 25' E.	7.79	574.7	
1	N. 1° 00' E.	20.21	1333.95	6	S. 89° 35' E.	15.04	992.6
2	S. 89° 35' E.	14.69	969.5				
3	S. 0° 25' W.	60.34	3982.4				
4	N. 89° 35' W.	34.91	2304.1				
5	N. 0° 25' E.	16.20	1069.2				
6	N. 26° 30' E.	21.82	1441.4				
7	N. 63° 30' W.	9.80	646.8				
8	S. 89° 35' E.	19.22	1268.5				

F.M. 13381

FILED MAP No. 13381
U.S. Surveyor General for California