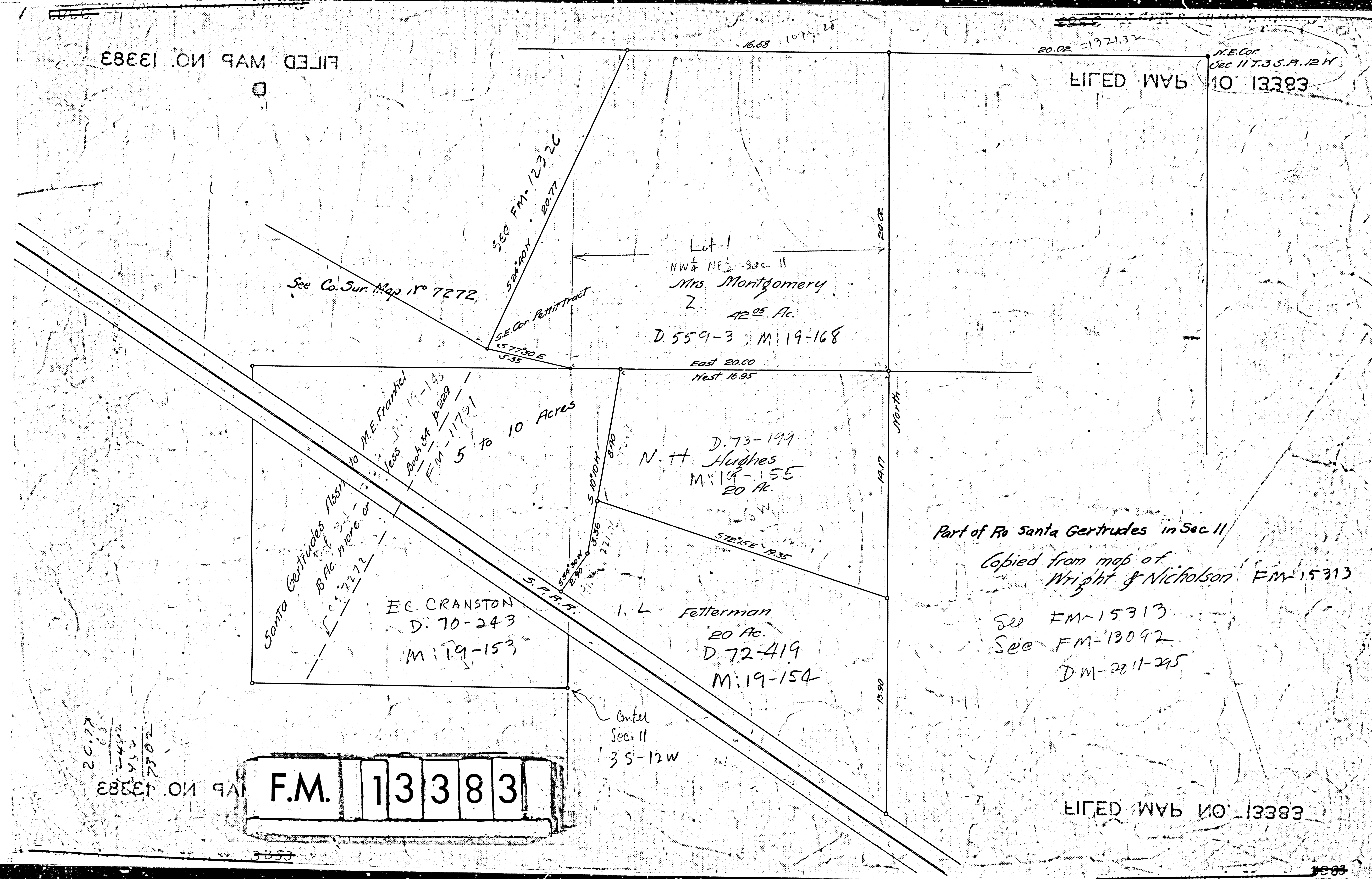


FILED MAP NO. 13383

FILED MAP NO. 13383  
N.E. Cor.  
Sec. 11 T.3 S. R. 12 W.



20.77  
-4.52  
16.25  
13383

F.M. 13383

Part of R. Santa Gertrudes in Sec. 11  
Copied from map of  
Wright & Nicholson F.M. 15313  
See F.M. 15313  
See F.M. 13092  
D.M. 2811-295

FILED MAP NO. 13383