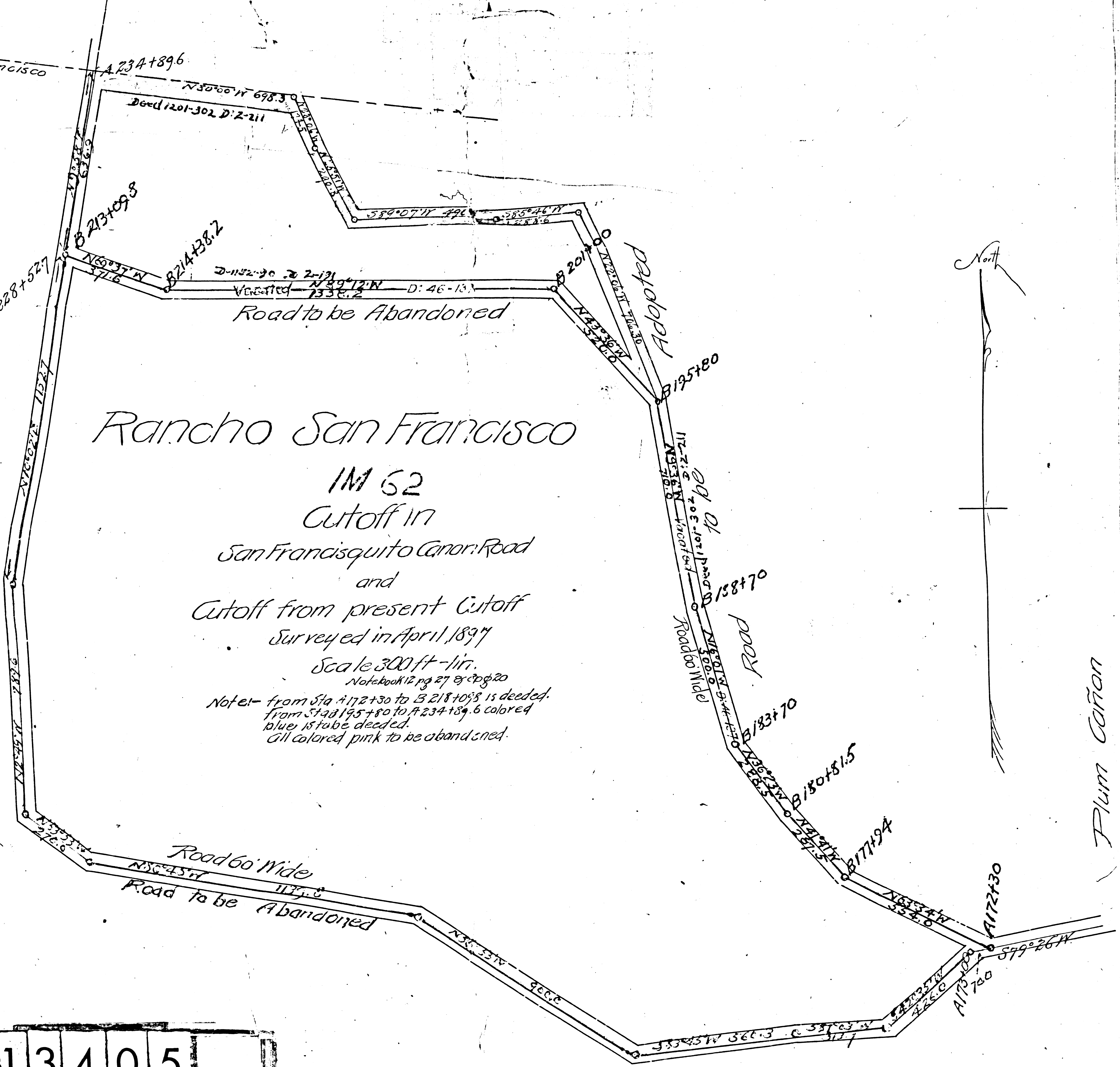


North Line Rancho San Francisco

San Francisco Canon



# Rancho San Francisco

IM 62

Cutoff in

San Francisquito Canon Road

and

Cutoff from present Cutoff

Surveyed in April 1897

Scale 300 ft - in.

Notebook 12 pg 27 & 28 & 29

Note - from Sta. 172+30 to 152+10.8 is deeded.  
From Sta. 145+80 to 123+18.6 colored  
blue is to be deeded.  
All colored pink to be abandoned.

Road 60 Wide

Road to be Abandoned

Adopted

Road to be

Road

Plum Canon

F.M. 13405