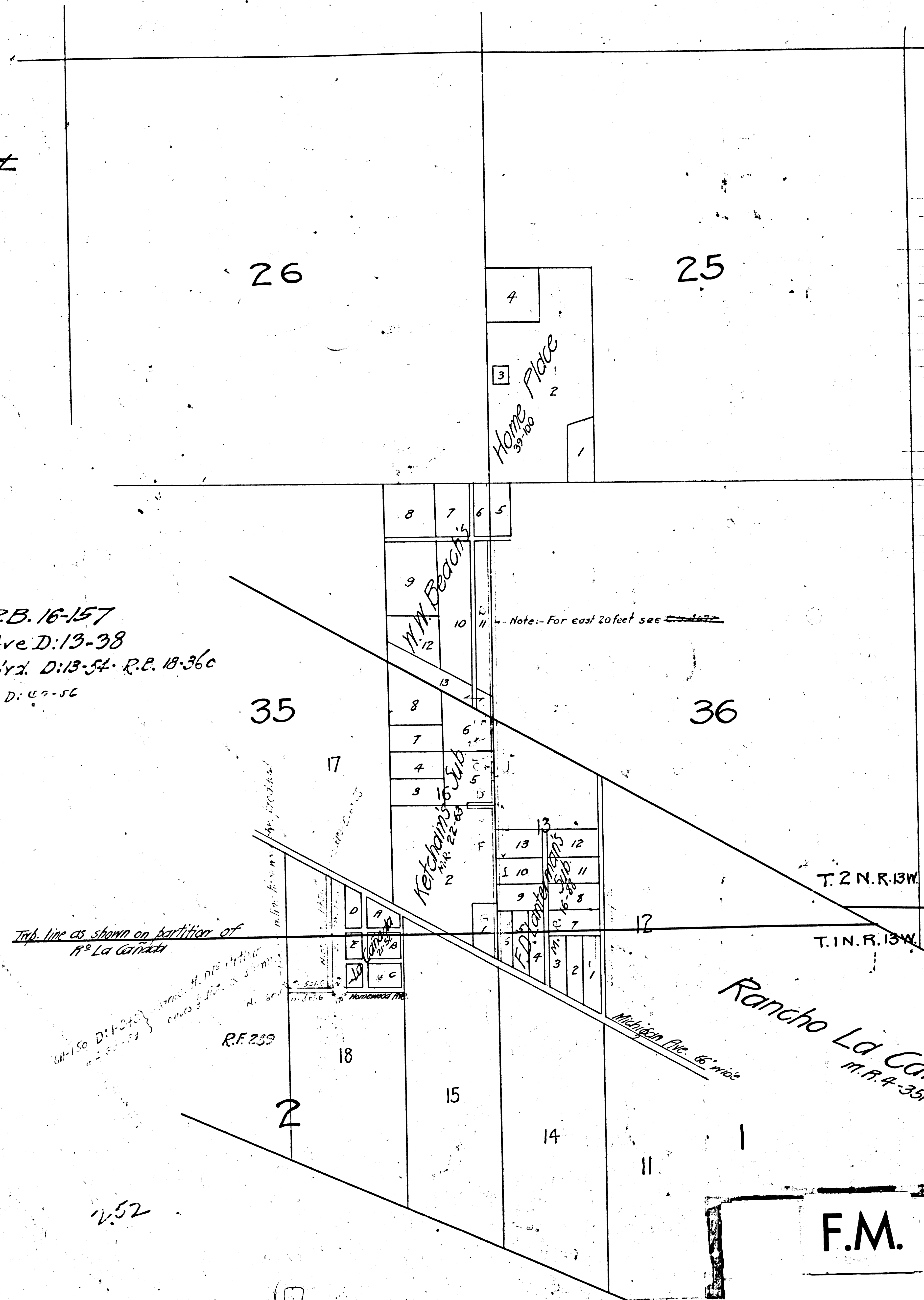


LA CANADA BV.
School Ave & McArthur Road
in
R^o La Canada & Land North
Showing deeds

Traced from San Rafael Sheet
20 chs. to 1 inch.
T. 2 N. R. 13 W.
T. 1 N. R. 13 W.

Name of School St. D:13-36 R.B. 16-157
Ohio St. changed to Burr Ave. D:13-38
School St. changed to La Canada Blvd. D:13-54 R.B. 18-36
Burr Ave - to Alta Canada Rd. - D:49-56



- A - 953-273 D:1-90 } Harvey Stark, et al. beg. at S.E. cor. Lot 6, tr. 114 on east side Lot 6, 7.35 chs. to ac. cor. Fisher; th. N 1/4 in same direction 4.952; th. N 62° 30' 20" W; th. S 1/4 9.352; th. E 1/4 20 ft.; being 20' strip.
- B - 953-274 D:1-90 } Minnie S. & Charles W. Holland. beg. at E. cor. 11, W.M. Beach's Home Place; th. North to mountain line; th. West 20 ft.; th. S. to S. line Lot 11; th. E. to ac.
- C - 183-275 D:1-91 } Charles H. & Florence M. Holland. beg. at E. line Lot 5, McArthur's Sub. Deeds, S. of me. cor.; th. South 20 ft.; th. W. 20 ft.; th. N. 20 ft.; th. E. 20 ft.
- D - 997-41 D:2-91 } Emma E. & C. H. H. Holland. beg. at E. line Lot 5, McArthur's Sub. Deeds, S. of me. cor.; th. N. 20 ft.; th. W. 20 ft.; th. S. 20 ft.; th. E. 20 ft.
- E - 997-40 D:2-91 } James W. & Martha C. H. Holland. beg. at N.E. cor. Lot 5, McArthur's Sub. Deeds, S. of me. cor.; th. S. 20 ft.; th. W. 20 ft.; th. N. 20 ft.; th. E. 20 ft.
- F - 997-42 D:2-91 } Emma E. & C. H. H. Holland. beg. at E. line Lot 5, McArthur's Sub. Deeds, S. of me. cor.; th. N. 20 ft.; th. W. 20 ft.; th. S. 20 ft.; th. E. 20 ft.
- G - 997-43 D:2-91 } The Holland, Emma E. & C. H. H. Holland. beg. at N.E. cor. Lot 5, McArthur's Sub. Deeds, S. of me. cor.; th. N. 20 ft.; th. W. 20 ft.; th. S. 20 ft.; th. E. 20 ft.
- H - 995-41 D:1-91 } A. H. Jones. beg. at S.E. cor. Lot 10, McArthur's Sub. Deeds, S. of me. cor.; th. S. 66'; th. W. 20' to beg.
- I - 995-42 D:1-91 } Anna L. & F. H. Jones. W. 20' of Lot 10, McArthur's Sub. Deeds, S. of me. cor.
- J - 995-40 D:1-91 } M. H. L. Jones. N. 20' of Lot 13, except part of Jones & their issue.

F.M. 13413