

MAP

FILED MAP NO. 13450

# C.A. COFFMAN'S RANCH

IN THE  
Rancho Paso De Bartolo Viejo

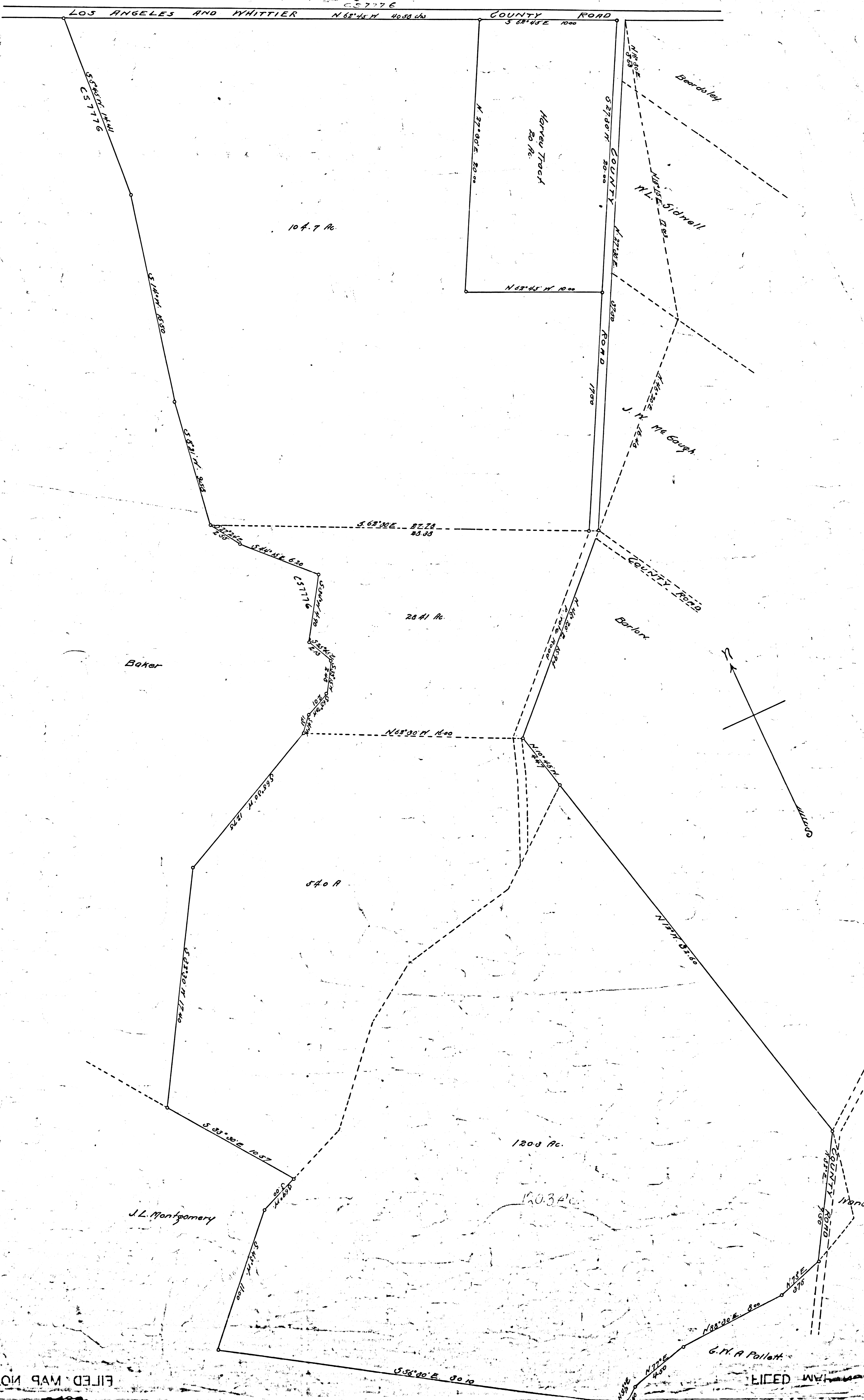
LOS ANGELES CO. CAL.

Scale 1" = 4 Chs

Magnetic Variation  
14° 45' E.

Surveyed in March 1887  
by G.H. Maxson.

Sec. C.S. 7708



F.M.
1
3
4
2
9

FILED MAP NO. 13450