

Plat  
of the Rancho  
Paso De Bartolo -  
finally confirmed to  
Joaquina Sepulveda.

Note - Taken from a certified  
copy of the Patent.  
Patent not recorded in  
Los Angeles Co.

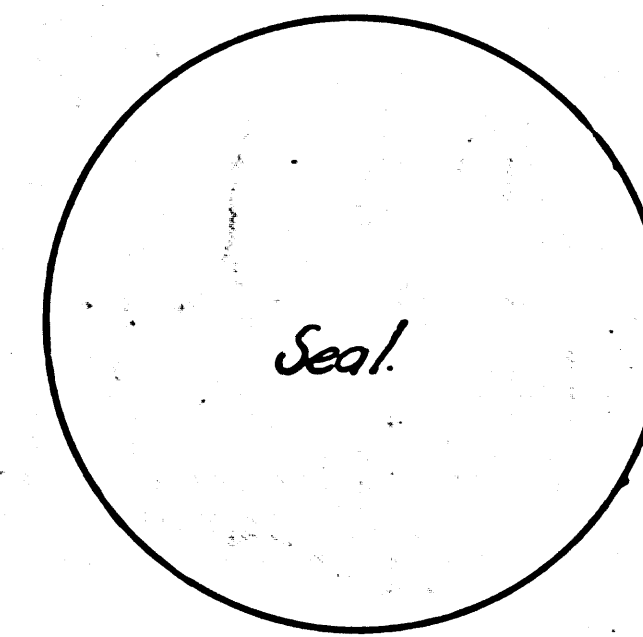
Surveyed under instructions from the U.S. Surveyor General by  
William Minto Dep. Surr. April. 1878.

Containing 207.79 Acres.

Scale 10chs to 1 inch  
Var. 13° 30' E.

Boundaries		
No	Course	Dist.
1	S 80 1/2° E.	43.00
2	N 18 3/4° E	51.20
3	N 74° W	35.40
4	S 20° 03' W	55.80

The field notes of the Survey of the Rancho Paso  
de Bartolo finally confirmed to Joaquina Sepulveda from which  
this plat has been made, have been examined and approved  
and are on file in this office  
U.S. Surveyor General's Office  
San Francisco, California  
December 18<sup>th</sup> 1879.



Theo Wagner  
U.S. Surv. Genl. Cal.

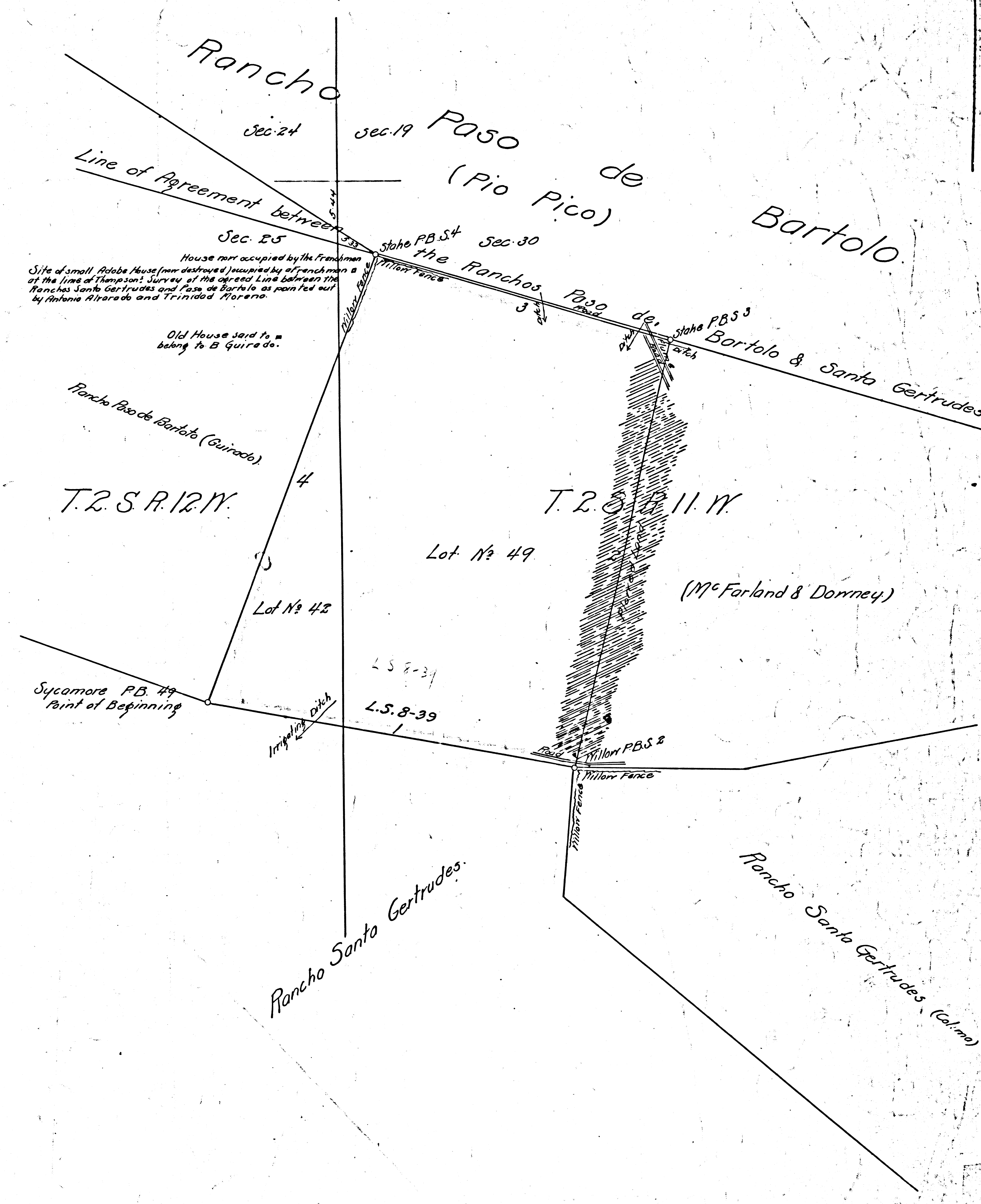
I hereby certify that under the provision of the Act of  
Congress of July 1<sup>st</sup> 1864 this survey and plat were  
advertised in the "Republican" newspaper, published  
in the County of Los Angeles, for four weeks, the  
date of the first publication thereof being on the  
18<sup>th</sup> of November 1878; also in the "Chronicle" news-  
paper, published in the City and County of San  
Francisco, for four weeks, the date of the first  
publication thereof being the 18<sup>th</sup> of November 1878.

This plat remained in this office subject  
to inspection, during ninety days from the date  
of first publication

U.S. Surveyor General's Office  
San Francisco, California  
December 18<sup>th</sup> 1879.

Theo Wagner  
U.S. Surv. Genl. Cal.

F.M. 13442



Approved March 17 1881  
J. Williamson  
Commissioner of the  
General Land Office