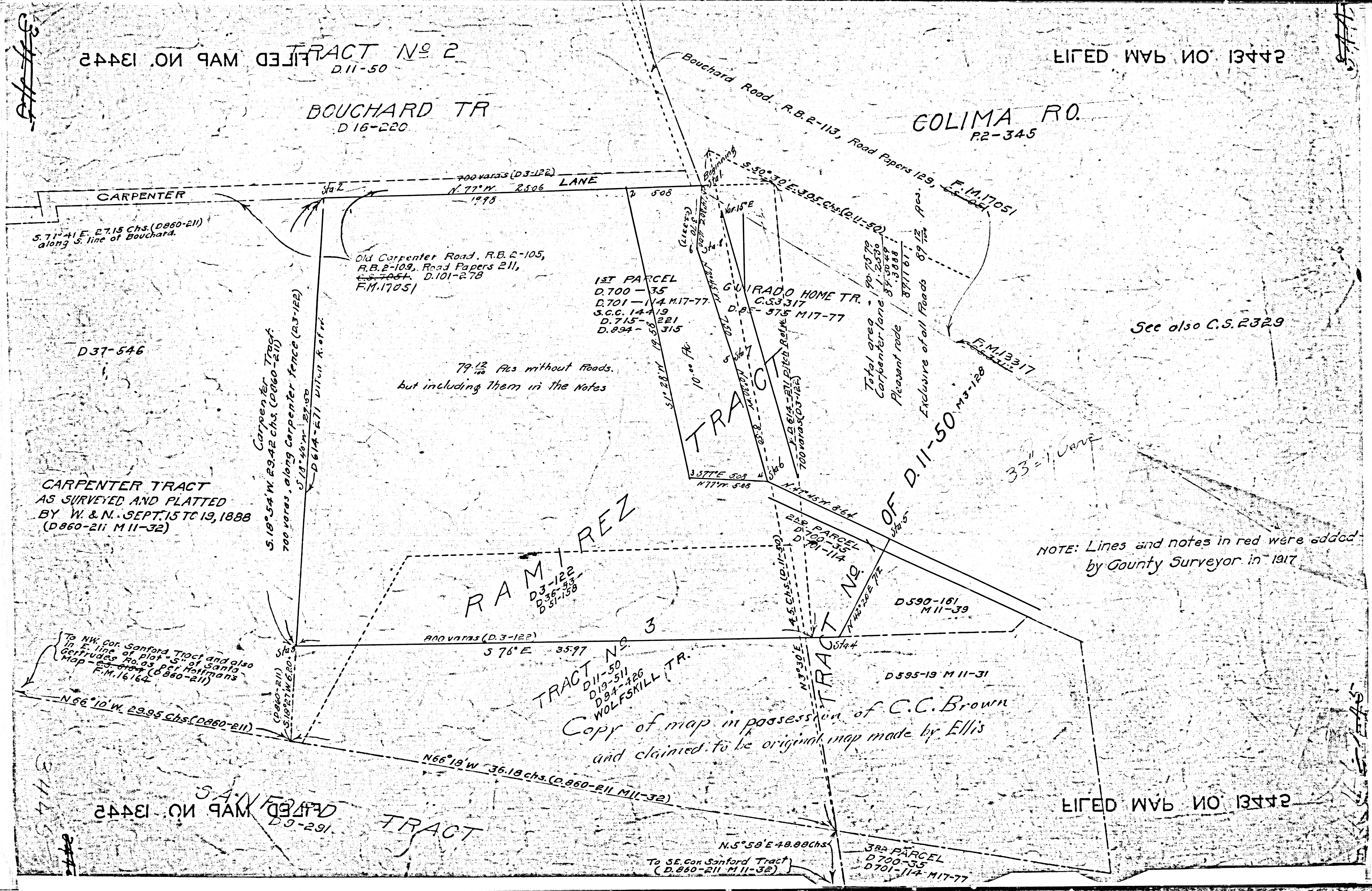


TRACT No 2
FILED MAP NO. 13445
D11-50

FILED MAP NO. 13442

BOUCHARD TR
D16-220

COLIMA RD.
R2-345



CARPENTER

S. 71° 41' E. 27.15 chs. (D.860-211)
along S. line of Bouchard.

700 varas (D.3-122)
1.77° W. 2506
1998

Old Carpenter Road, R.B. 2-105,
R.B. 2-109, Road Papers 211,
212, 213, D.101-278
F.M. 17051

1ST PARCEL
D.700-35
D.701-174 M17-77
S.C.C. 14-19
D.715-221
D.894-315

GUERRERO HOME TR.
C.S. 3317
D.85-575 M17-77

D37-546

79 1/2 Acs without Roads,
but including them in the notes

CARPENTER TRACT
AS SURVEYED AND PLATTED
BY W. & N. SEPT. 15 TO 19, 1888
(D.860-211 M11-32)

Carpenter Tract
S. 19° 54' W. 29.42 chs. (D.860-211)
700 varas, along Carpenter fence (D.3-122)
S. 10° 40' W. 27.50
D.614-211 with R. Ref. 1

RAMIREZ
D3-122
D36-33
D31-138

TRACT No 3
D11-50
D19-511
D84-426
WOLFSKILL TR.

NOTE: Lines and notes in red were added
by County Surveyor in 1917

To NW Cor. Sanford Tract and also
to E. line of plot 5 of Santa
Map - 23-6100 (D.860-211)
F.M. 16164

N. 66° 10' W. 29.95 chs. (D.860-211)

800 varas (D.3-122)
S 76° E 35.97

Copy of map in possession of C.C. Brown
and claimed to be original map made by Ellis

TRACT
FILED MAP NO. 13445
D9-291

TRACT

FILED MAP NO. 13442

To SE. con. Sanford Tract
(D.860-211 M11-32)

N. 5° 58' E. 48.88 chs.

3RD PARCEL
D.700-35
D.701-174 M17-77

F.M. 13445