

FILED MAP NO. 13447

Scale: 4 Chs = 1 inch. Var. N14°30'E.

Surveyed by G.C. Brown

FILED MAP NO. 13447

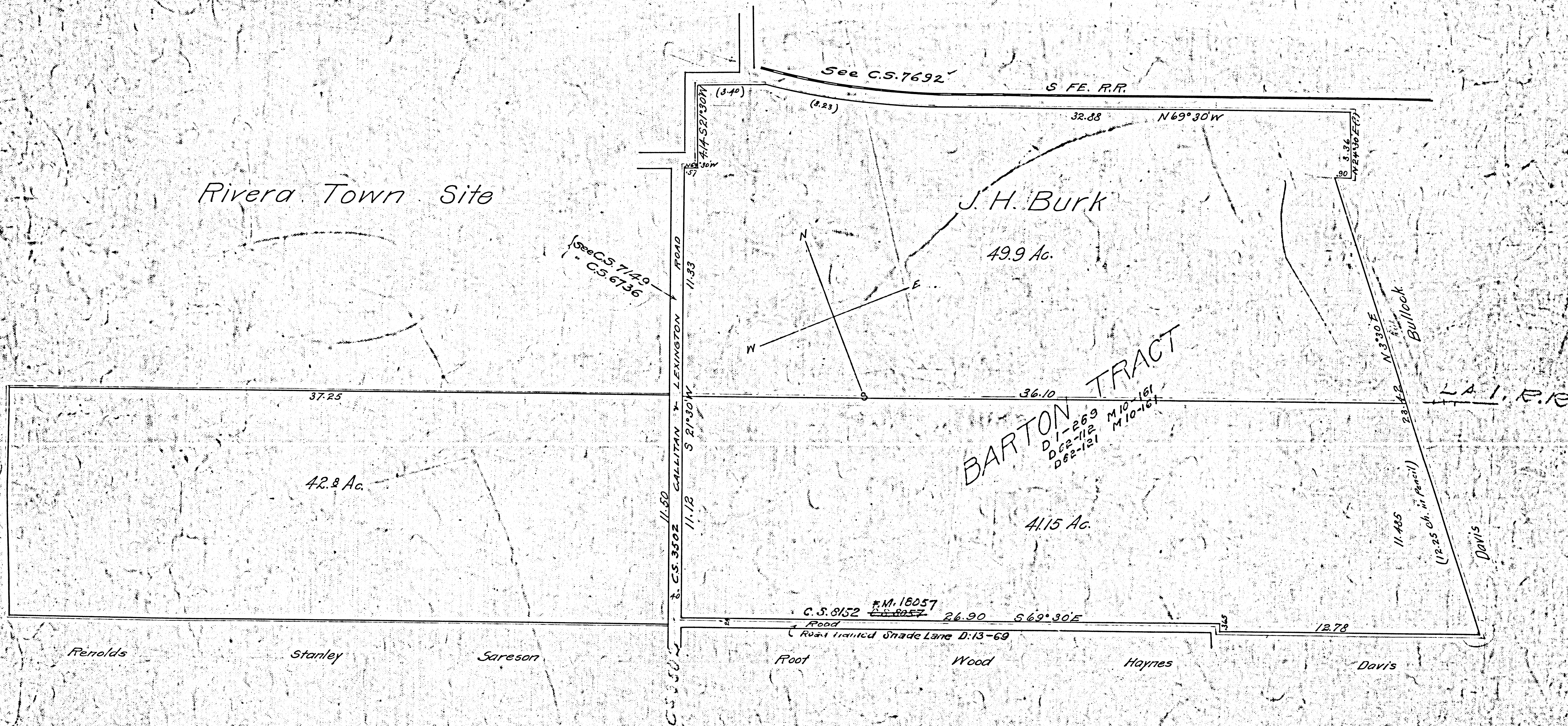
Joseph H. Burkes Property adjoining the
Town of Rivera

Sept. 1892. Norwalk Cal.

See also C.S. 2329 F.M. 12329.

Gallitan-Lexington Road changed to Passons Blvd. D: 49-23. R.B. 35-306

J.M. 36



F.M. 13447

Copied from a map in possession of
Joseph H. Burke.

Dec-1897

Hamlin

FILED MAP NO. 13447

FILED MAP NO. 13447