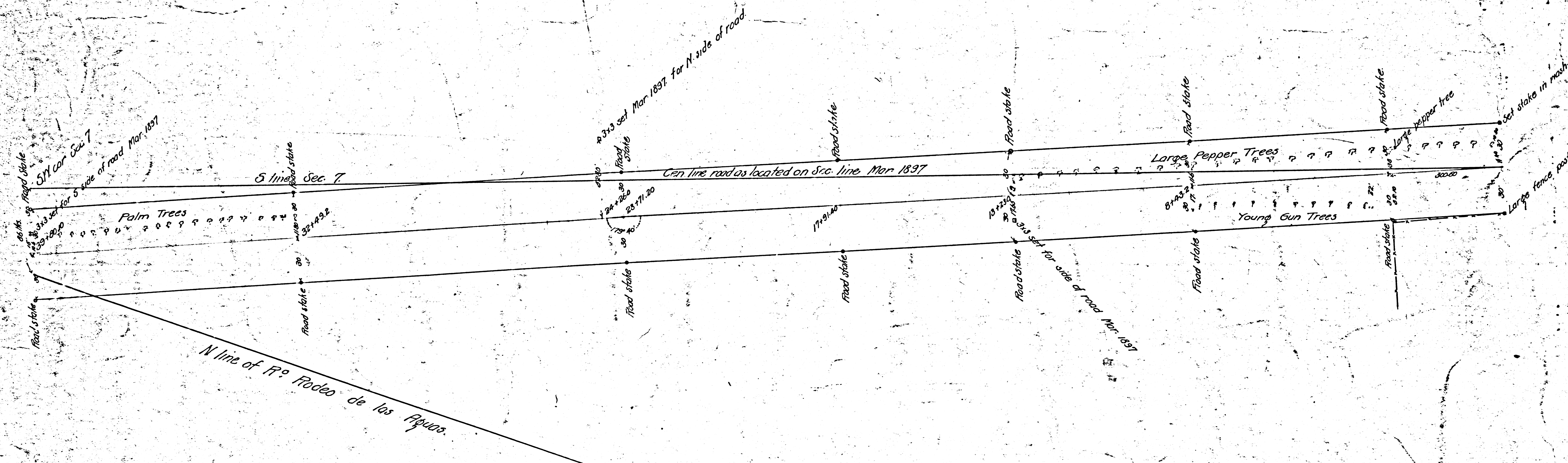


*Portion of Santa Monica Foot Hill Road
as surveyed under instructions from the Board of Supervisors
30' on each side of center line of present traveled road.*

*Feb. 8. 1893
Scale 200' = 1"
Width on exaggerated of 30' = 1"
See map N^o 3401 IM 22 F.B. 15-73*

*Scale D:15 = 50
D:11 = 200*

*Por Santa Monica Foot Hill Rd changed to Sunset Blvd. D:13-109
Sunset Blvd. widening - H:38-4-6*



*Vac. por Santa Monica Foot Hill Road D:12-13
Deed for Santa Monica Ave D:10-29*

F.M. 13467