

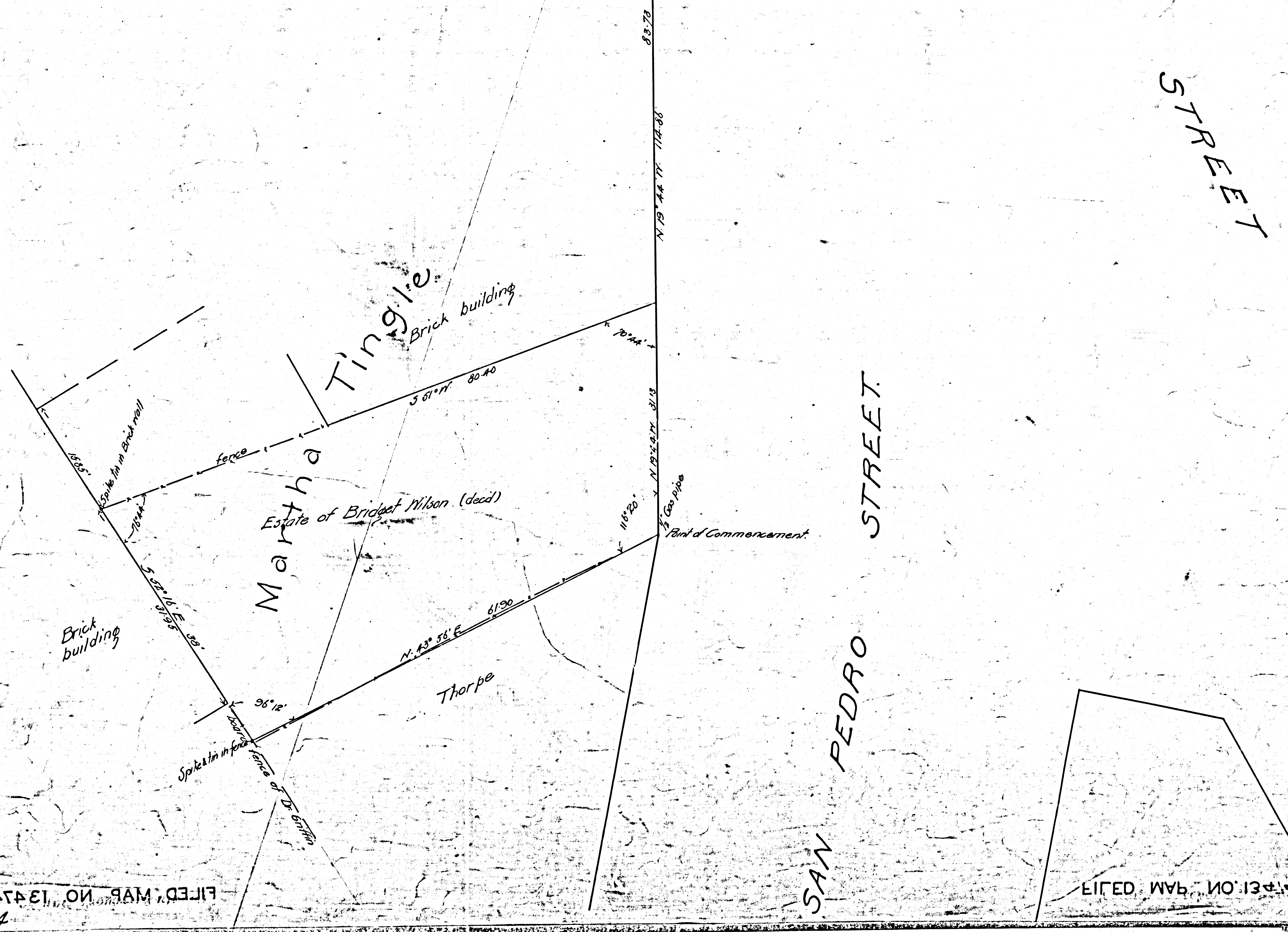
FILED MAP NO. 13474
County Surveyor's Map No. 4776

FILED MAP NO. 13474
County Surveyor's Map No. 4776

Plot of a survey of a tract of land belonging to the Estate of
Bridget Wilson (decd) located in the City of Los Angeles
County of Los Angeles, State of California, being a portion
of the tract of land marked "Martha Tingle" on a Map
recorded in Book 16 of Deeds at Page 599 records of said
County
Surveyed January 24 1898 by
V. J. Rowan

Scale 10" = 1"
True Courses Var. 14° 30' E. 119 9
Surveyor

F.M. 13474



FILED MAP NO. 13474
3474

FILED MAP NO. 13474