

FILED MAP NO. 13475

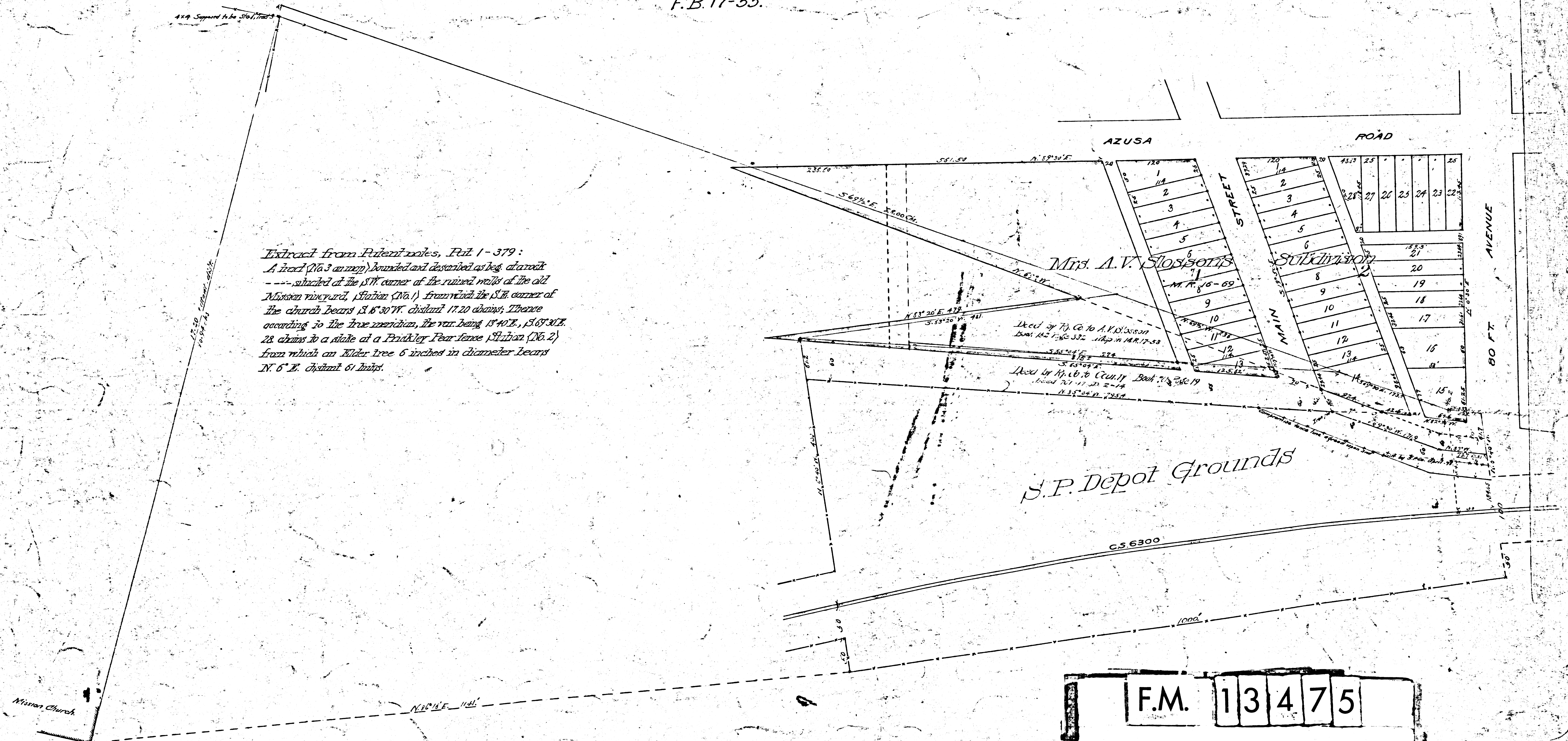
FILED MAP NO. 13475

MISSION DR.  
 Map  
 showing location of  
~~County Road at San Gabriel~~  
 Deeded to County by S.P.R.R. Co.  
 Now Dalton Street by Ord 42 See D:18-250  
 11744

Scale 100 ft. = 1 in.

F.B. 17-55.

Extract from Patent rolls, Pat. 1-379:  
 A tract (No. 3 on map) bounded and described as follows: at and  
 situated at the SW corner of the ruined walls of the old  
 Mission vineyard, Station (No. 1) from which the S.E. corner of  
 the church bears S. 6° 30' W. distant 17.20 chains; Thence  
 according to the true meridian, the run being S. 40° E., 15.67° 30' E.  
 28 chains to a stake at a Prickley Pear fence Station (No. 2)  
 from which an Elder tree 6 inches in diameter bears  
 N. 6° E. distant 61 links.



FILED MAP NO. 13475

FILED MAP NO. 13475