

MAP
SHOWING LAND TO BE TAKEN AND DISTRICT OF ASSESSMENT
FOR THE OPENING OF

CLARENCE STREET.

FROM THE
NORTHERLY LINE OF H.J. WOOLLACOTT'S First Street Tract
TO THE SOUTHERLY LINE OF THE LEONIS Tract
CITY OF LOS ANGELES, CAL.

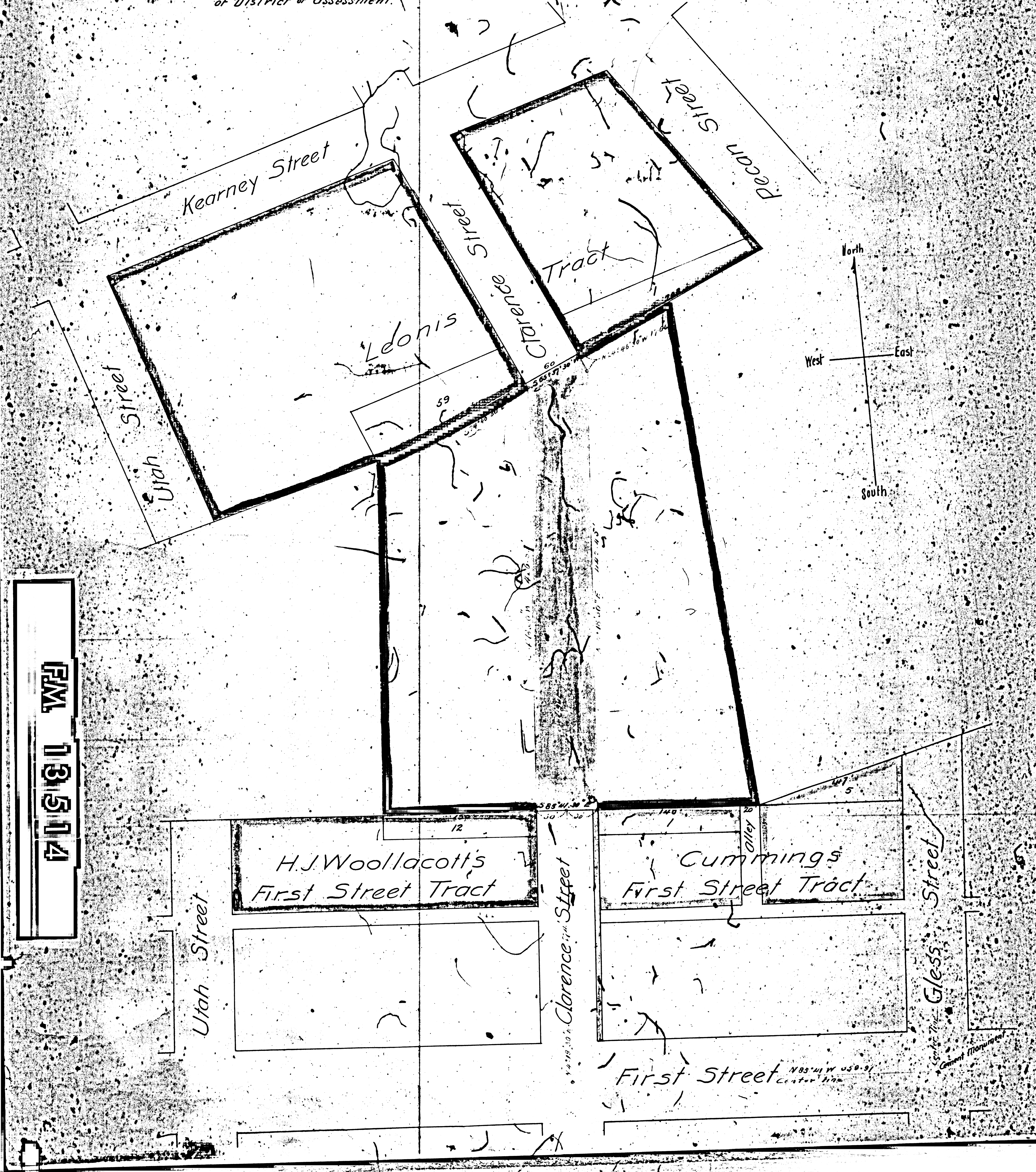
J.H. Dockweiler City Engineer, July 1898

Scale 60 feet = 1 inch.

Sht. 7

(Ordinances Nos 5121 and 5216 New Series)

Note: Red Color shows land to be taken.
Green Color shows exterior boundaries
of District of Assessment.



FM 13514

