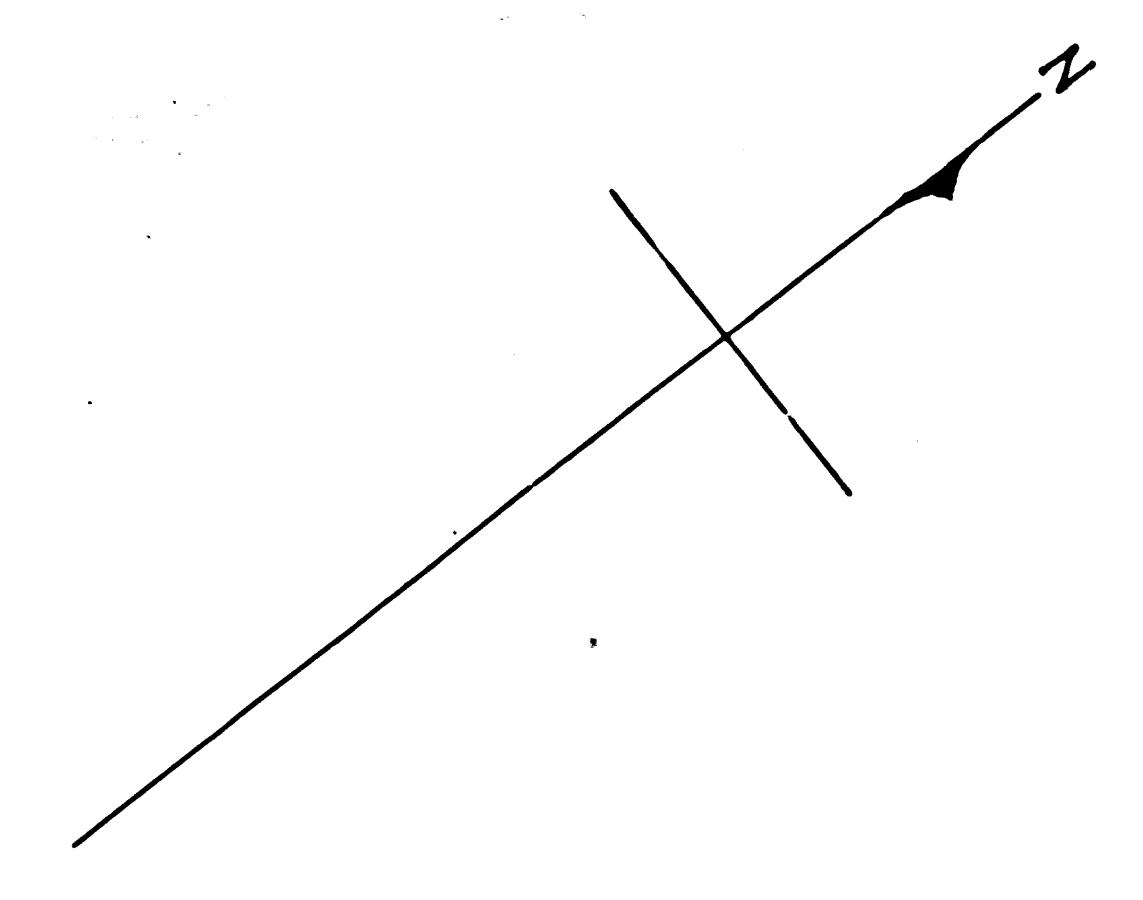


County Surveyor's Map No. 3520

Map of Block No 7 bounded by Spring and Broadway Third and Fourth Sts. Scale 30ft. = 1 inch.

Copied from map in City Engineer's Office No. 105



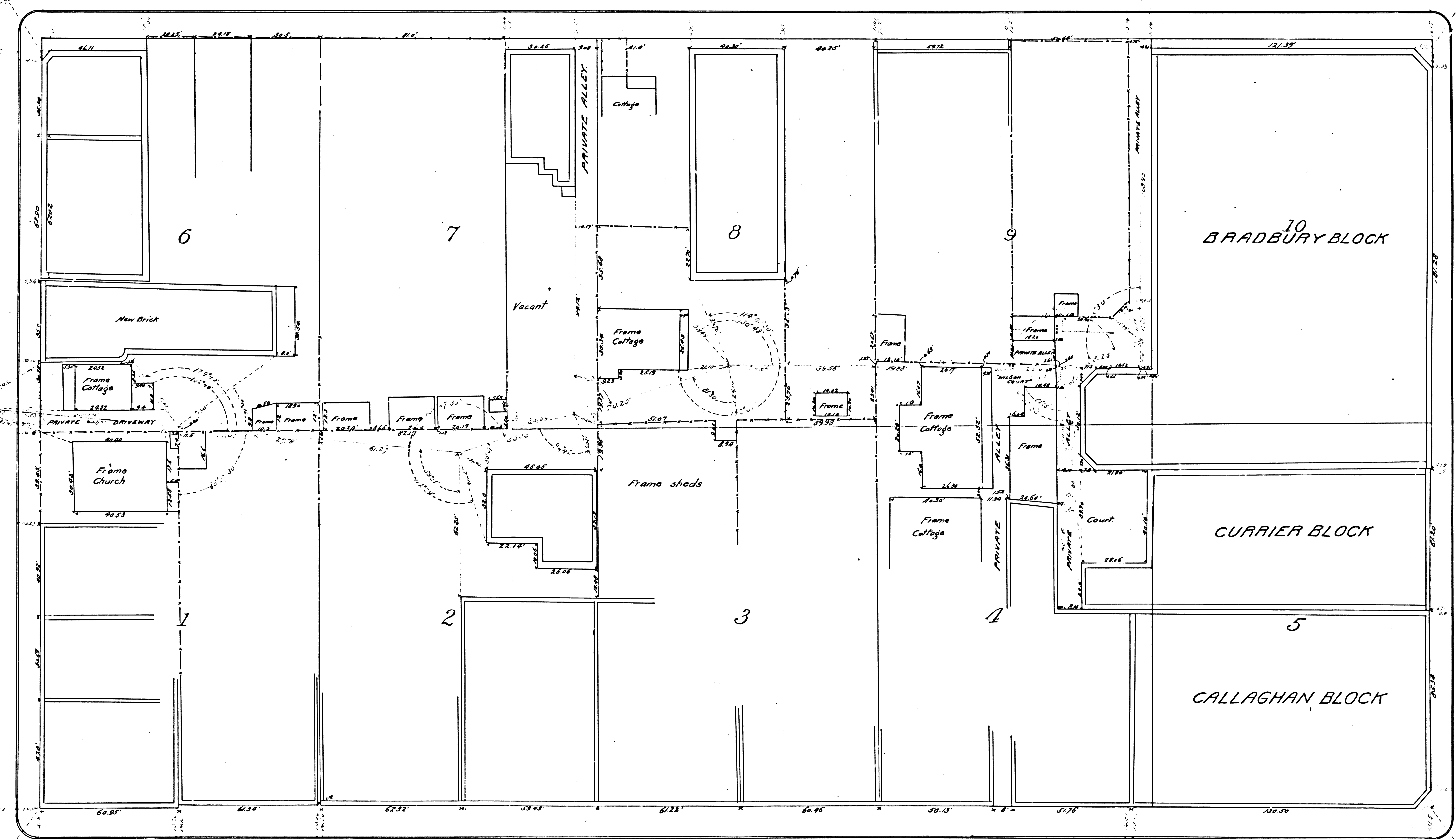
FILED MAP NO. 13250

FILED MAP NO. 13250

STREET

FOURTH

FILED MAP NO. 13250



BROADWAY

STREET

THIRD

SPRING

STREET.

FILED MAP NO. 13250

F.M. 13520

3520

3520