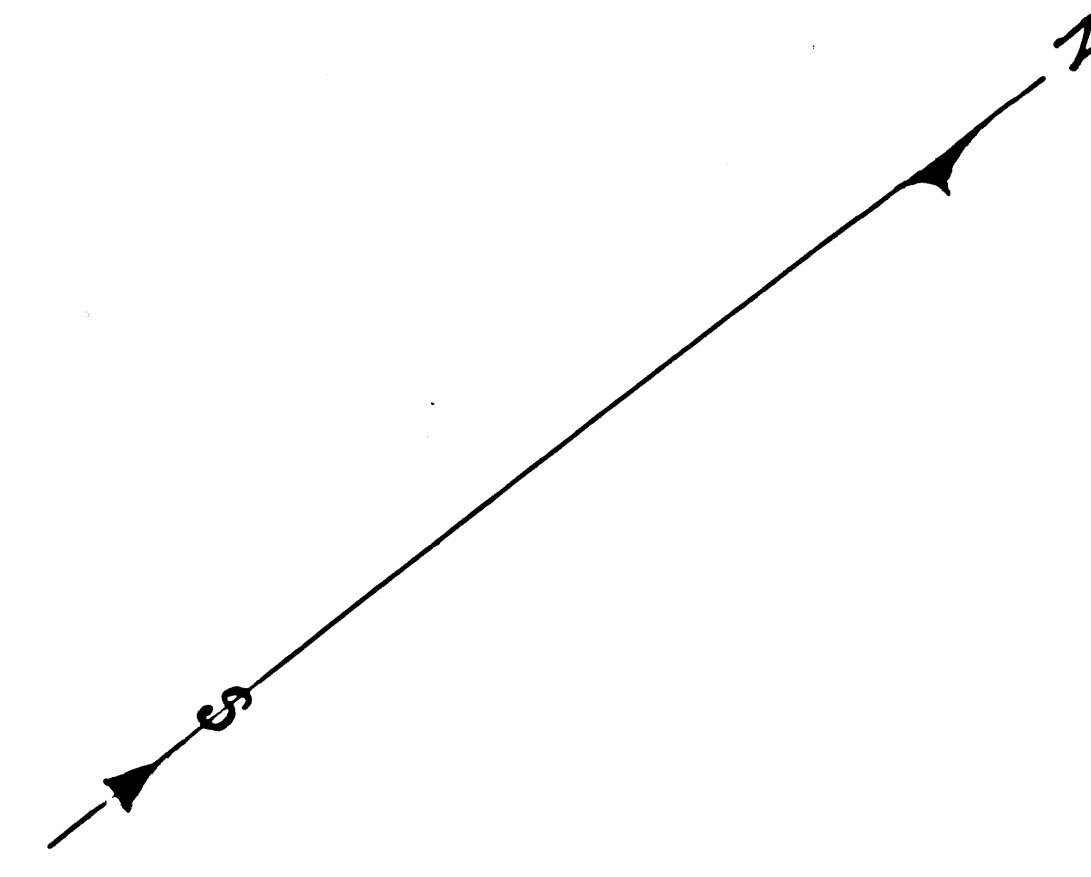


Proposed Opening of an Alley  
From 4<sup>th</sup> St. to 5<sup>th</sup> St.

between  
Broadway & Hill St.

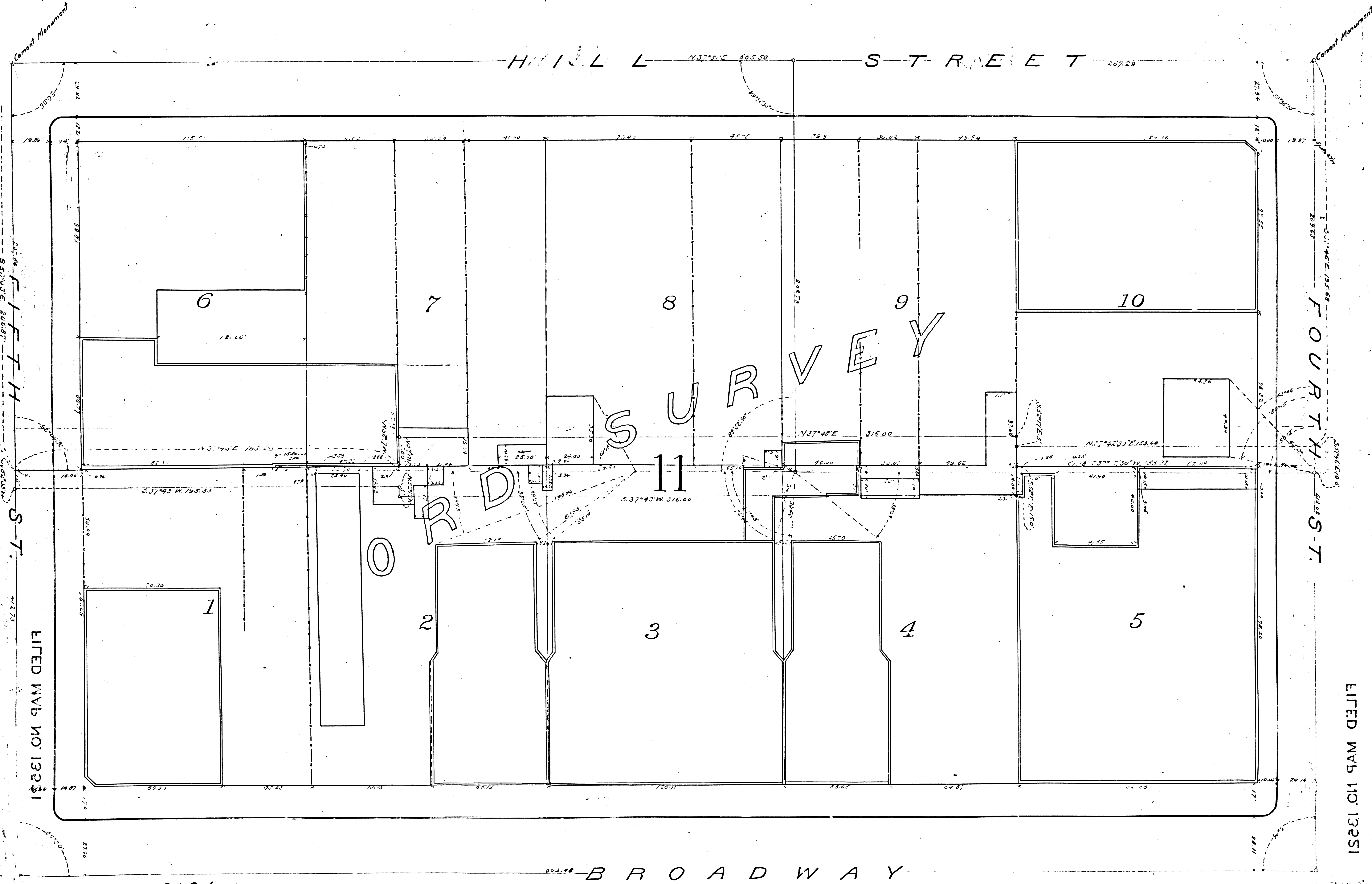
Scale 1 inch = 30 ft.  
Surveyed - July 1897.

Copied from map No. 186  
in City Engineer's office.



FILED W&P NO. 13251

FILED W&P NO. 13251



FILED W&P NO. 13251

FILED W&P NO. 13251

F.M. 13521