

FILED MAP NO. 13522

County Surveyor's Map No. 3522

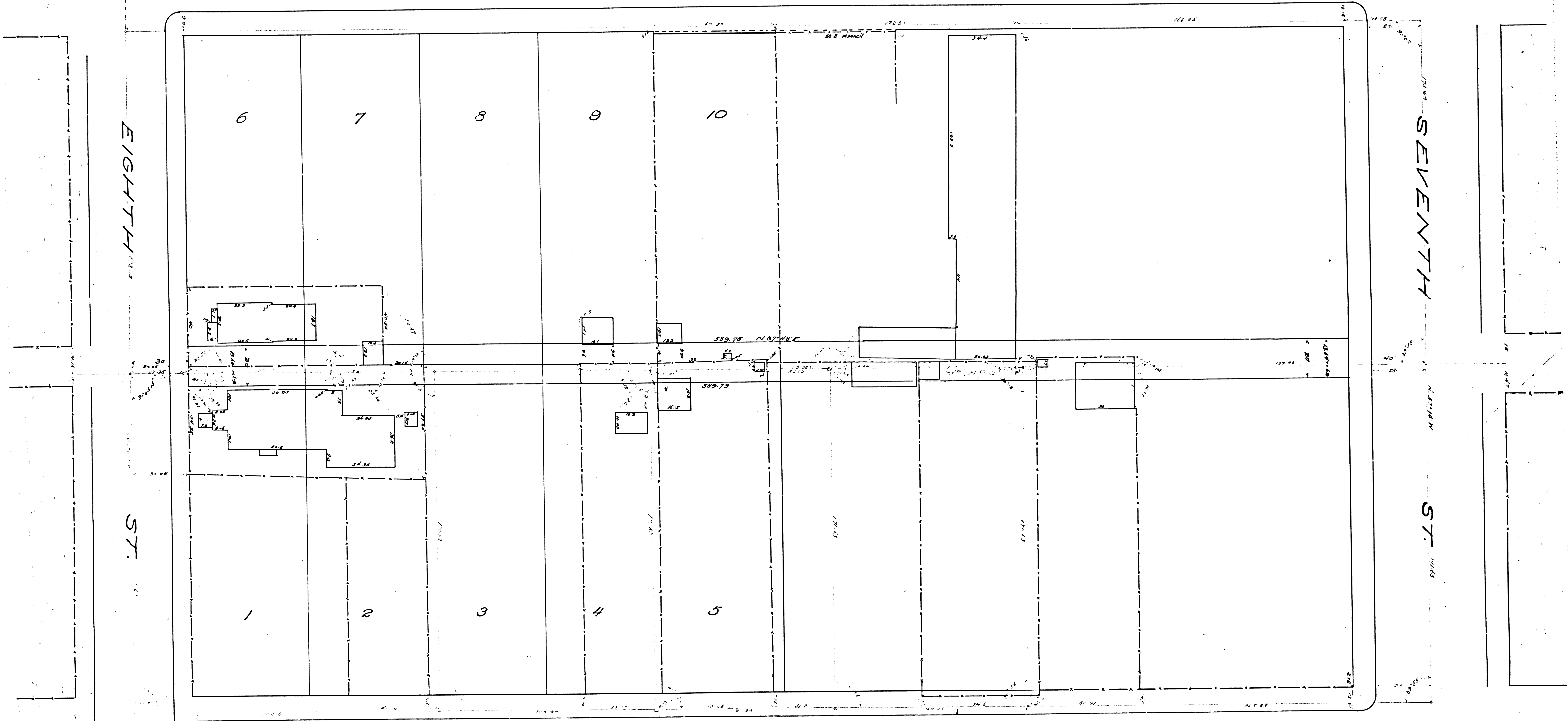
MAP
 OF THE
 PROPOSED EXTENSION
 OF
PARK LANE
 FROM
 SEVENTH ST. TO EIGHTH ST.
 IN THE
 CITY OF LOS ANGELES CAL.
 J.H. Dockweiler City Eng. Feb 1894
 Scale 30 feet to 1 inch.

FILED MAP NO. 13522

Copied from City Engineer's map No. 130

FIGUEROA

ST.



FILED MAP NO. 13522

FLOWER

ST.

FILED MAP NO. 13522

F.M. 13522