

County Surveyor's Map No. 3526

Proposed opening of an alley
from Fifth St to Sixth Street
between Broadway and Hill St
Scale 30' = 1" May 1898.

Copied from map in
City Eng. office,
No. 207

County Surveyor's Map

FILED MAP NO. 13258

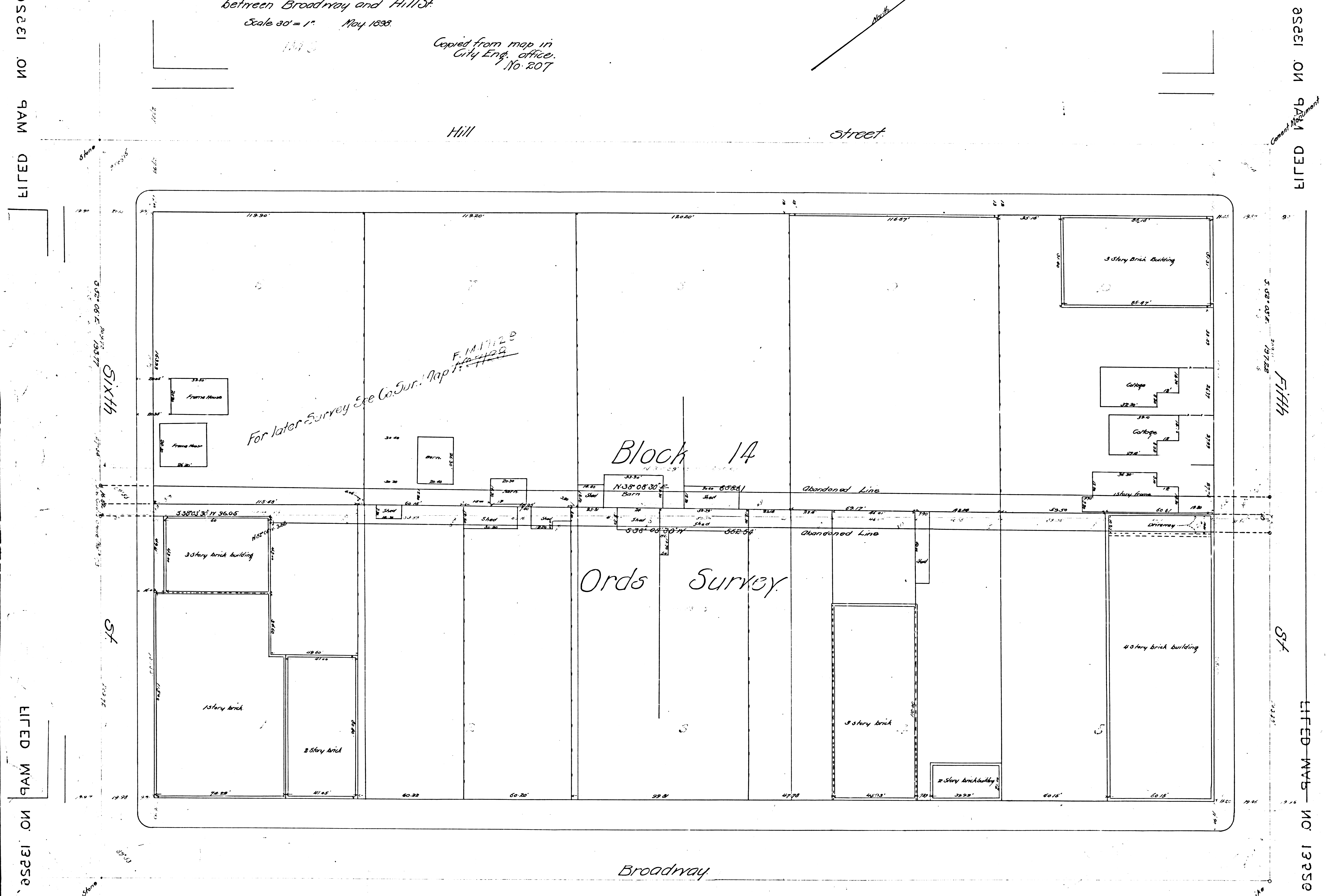
FILED MAP NO. 13258

FILED MAP NO. 13258

FILED MAP NO. 13258

County Surveyor's Map No. 3526

County Surveyor's Map



F.M. 13526 - 10