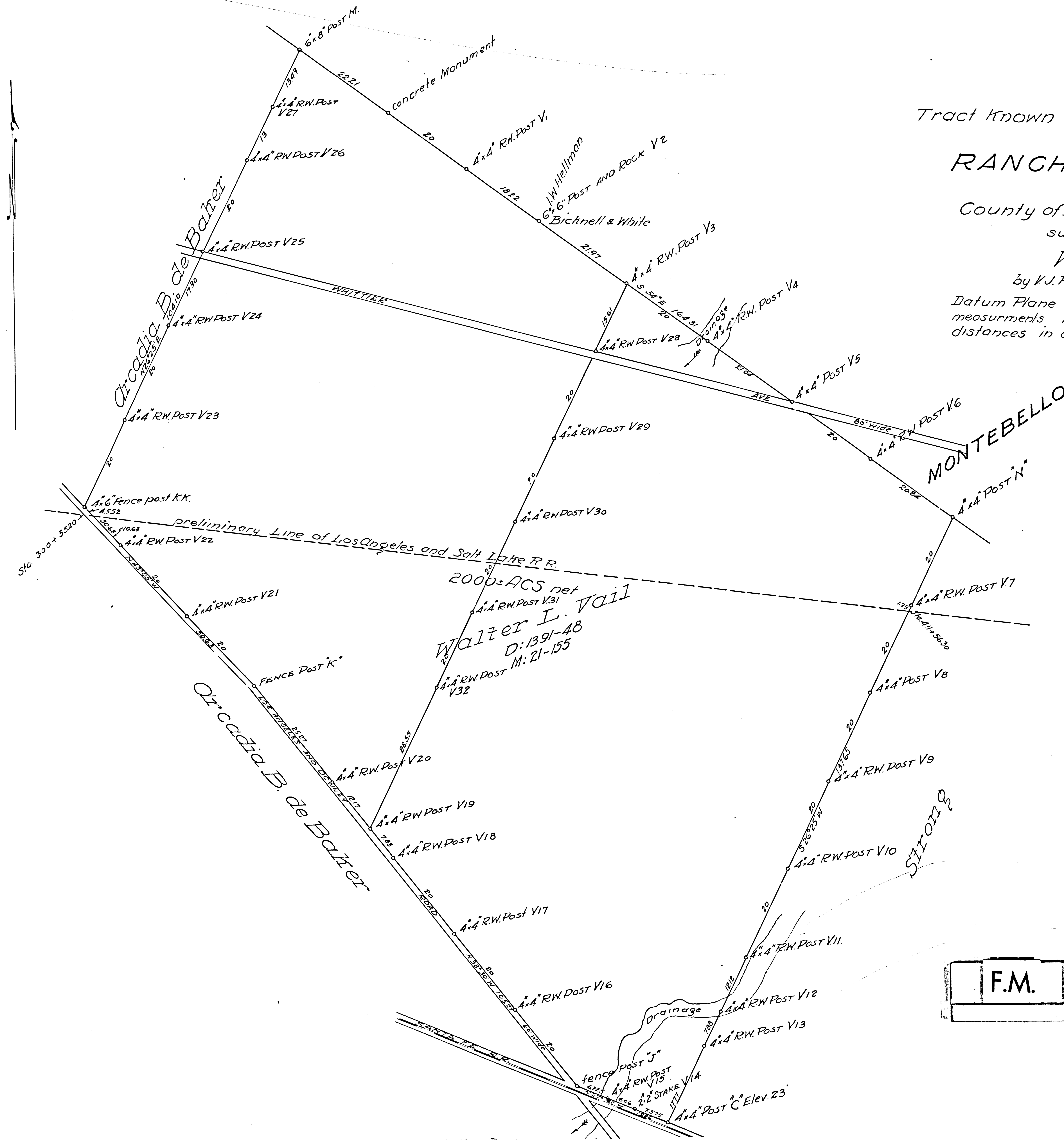


MAP
 of a portion of the
 Tract known as the Rancho La Laguna
 a part of the
RANCHO SAN ANTONIO
 in the
 County of Los Angeles State of Cal.
 surveyed at request of
Walter L. Vail
 by V.J. Rowan Surv. Sept. 1900.

Datum Plane O is 140ft. above sea level.
 measurements, inside of lines of tract were made by V.J.R.
 distances in chains. Scale 12 chs to one inch
 True Courses



F.M. 13555

9555

9555