

FILED MAR 10 1904

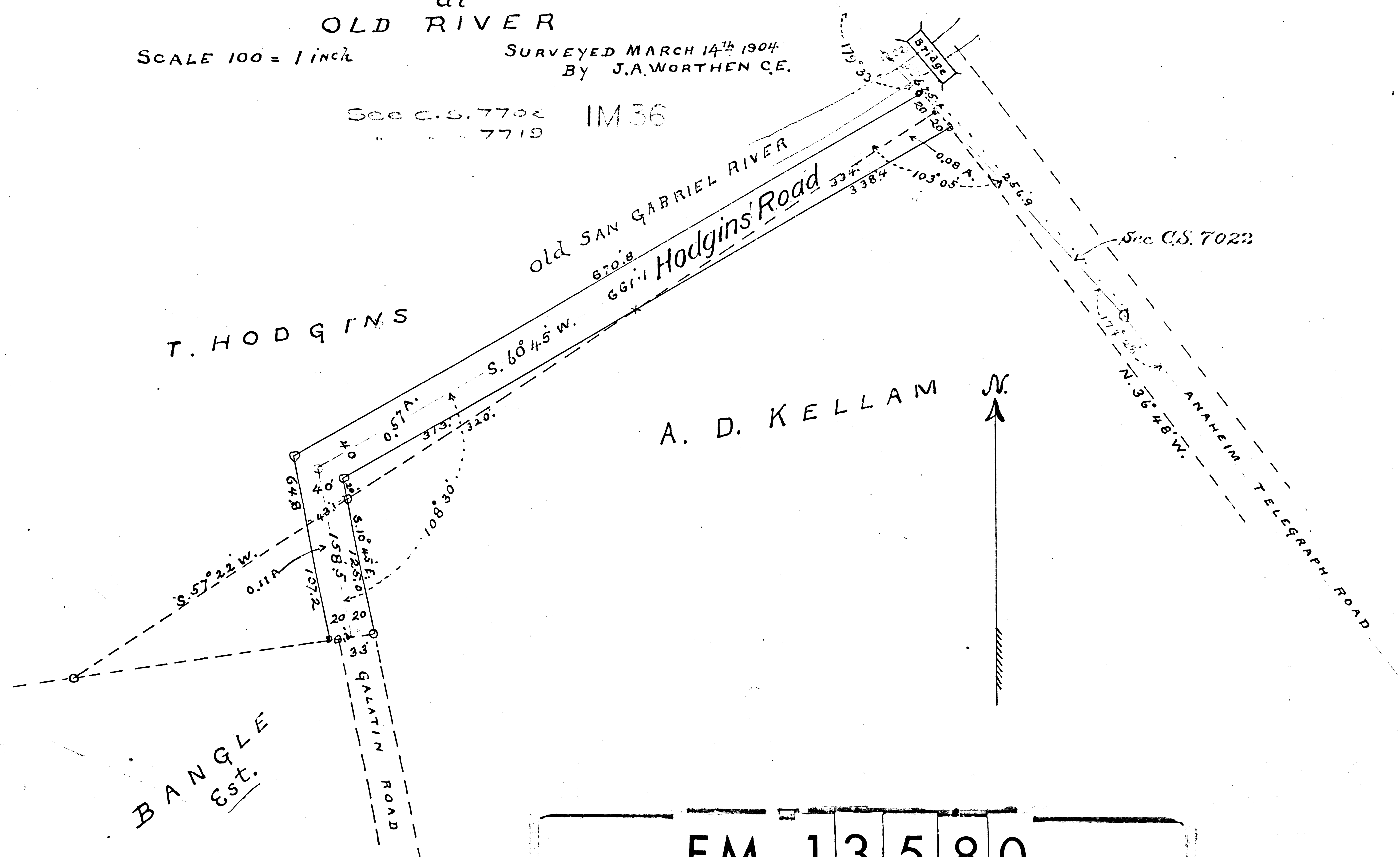
LIVED 1906 NO 13880

PLAT of PROPOSED ROAD
connecting
GALATIN & TELEGRAPH ROADS
at
OLD RIVER

SCALE 100 = 1 inch

SURVEYED MARCH 14th 1904
By J.A. WORTHEN C.E.

See C.S. 7702 IM 36
7719



STAINLESS
DIERZEN
NO. 20575 36"

STAINLESS
DIERZEN
NO. 20575 36"

B ANGLE
Est.

F.M. 13 5 8 0

FILED MAR 10 1904

NO 13880