

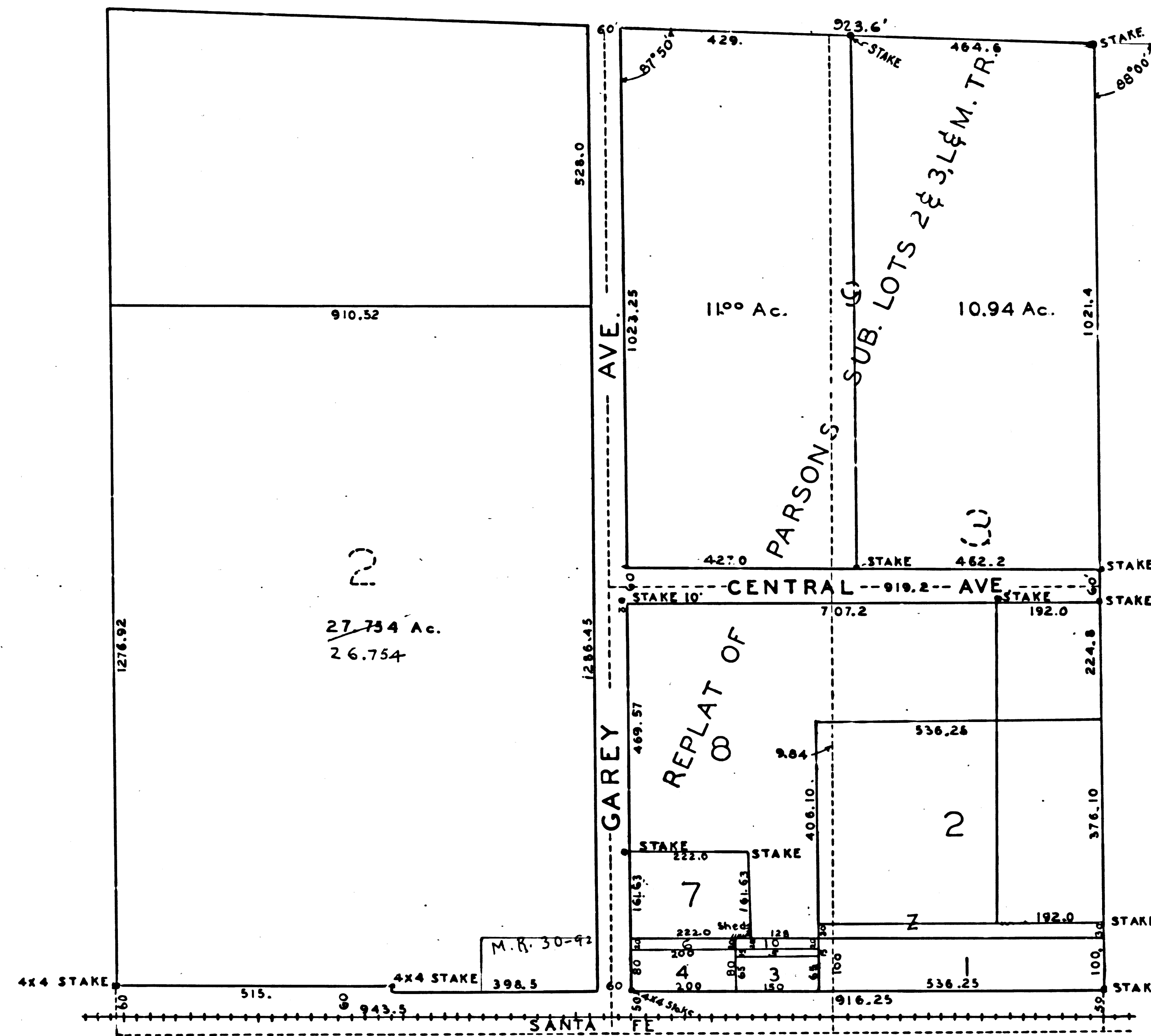
SURVEY OF REPLAT OF PARSONS SUB.  
 & LOTS 2 & 3 - L & M. TRACT

SUPVEYED BY WILLIS JONES, C.E.  
 MARCH 12, 1906.  
 FILED MAP NO. 13619  
 SCALE: 200 FT. = 1 IN.  
 I.M. 49



*Retrace from the old paper original  
 map which has been discarded.*

*Traced by D.C. Jannopoulos, April, 1953  
 Checked by R.J.B.*



NOTE:  
 COPIED FROM BLUE PRINT OF  
 ORIGINAL MAP APRIL 28, 1910.  
 County SURVEYOR

F.M. 13619

FILED MAP NO. 13619

FILED MAP NO. 13619

FILED MAP NO. 13619