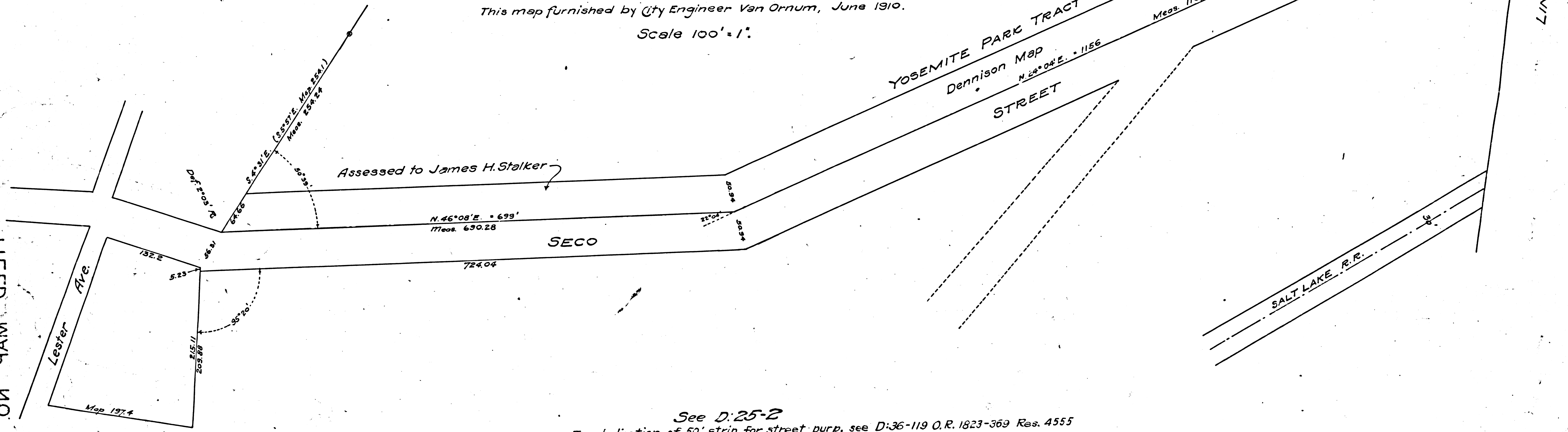


FILED MAP NO 1361

FILED MAP NO 13650

**SECO STREET**  
 in  
 City of Pasadena  
 from Lincoln Ave. westerly  
 ALSO 50' STRIP ADJOINING ON NORTH

This map furnished by City Engineer Van Ornum, June 1910.  
 Scale 100' = 1".



See D:25-2  
 For dedication of 50' strip for street purp. see D:36-119 O.R. 1823-369 Res. 4555

Index # 8

F.M. 13620

FILED MAP NO 1361

FILED MAP NO 13650