

MAP
OF THE
GAGE HOME PLACE

a portion of the
RANCHO SAN ANTONIO

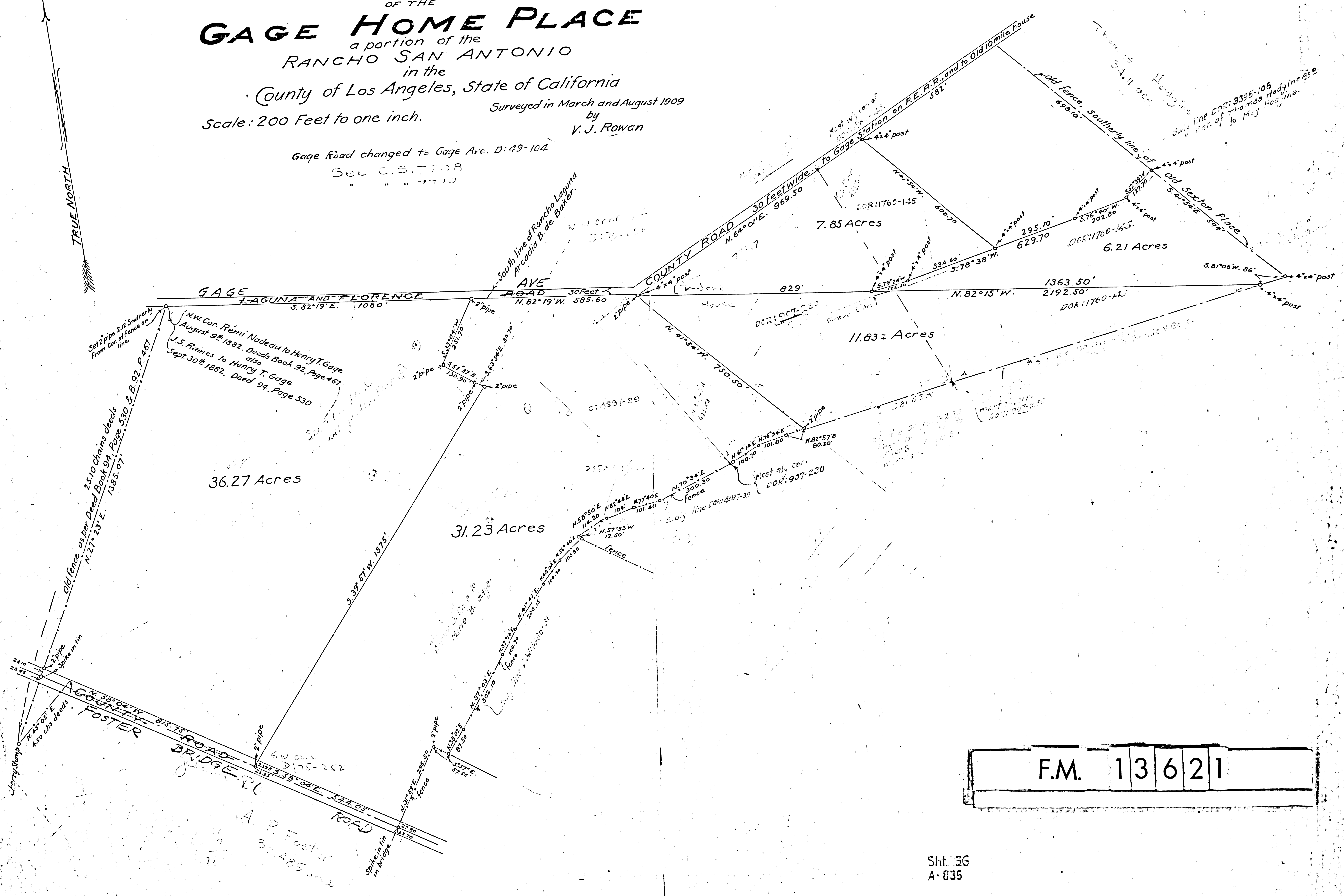
in the
County of Los Angeles, State of California

Scale: 200 Feet to one inch. Surveyed in March and August 1909
by
V. J. Rowan

Gage Road changed to Gage Ave. D: 49-104

Sec. C.S. 7708
" " " 7710

TRUE NORTH



F.M. 13621