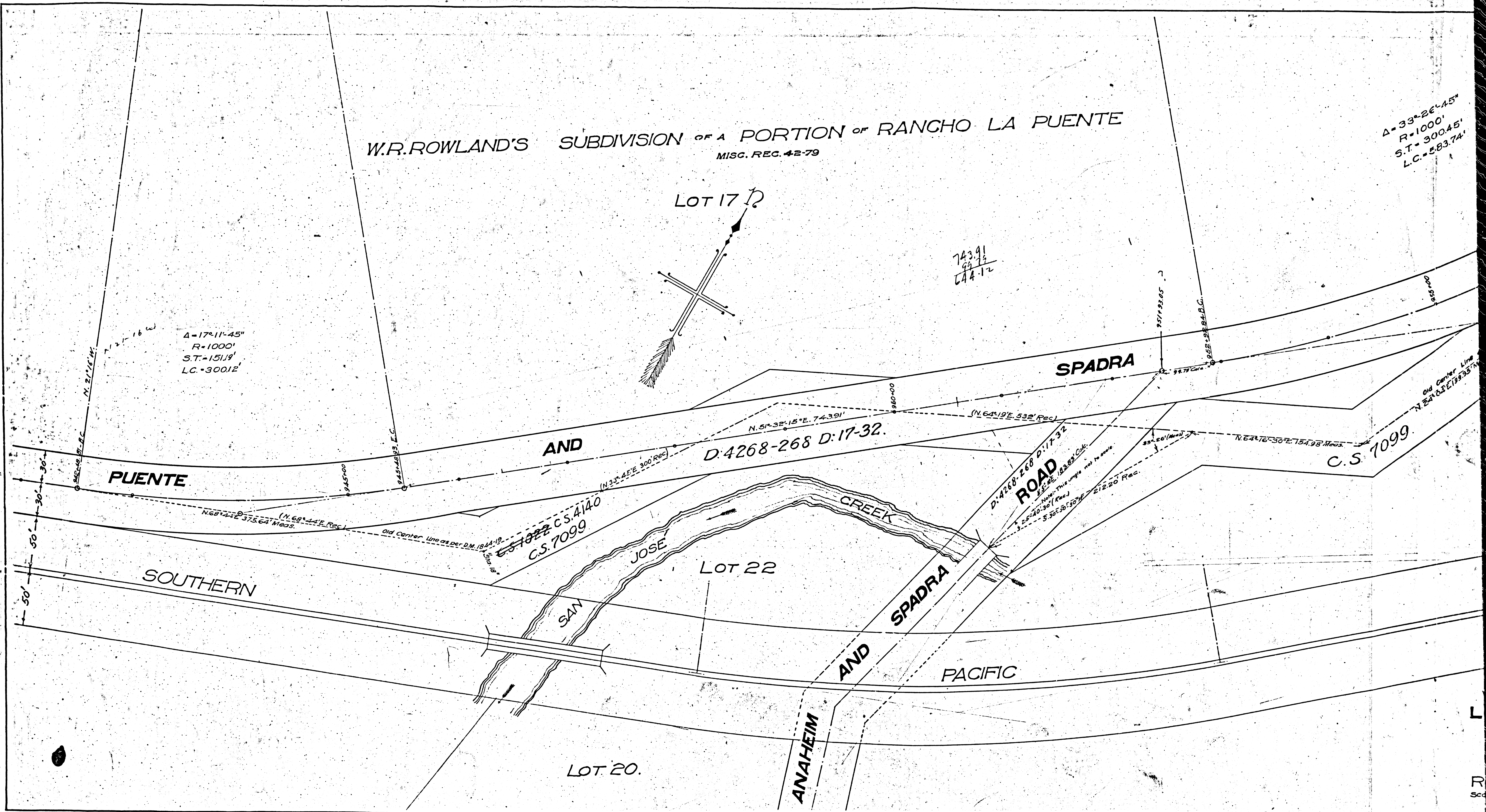
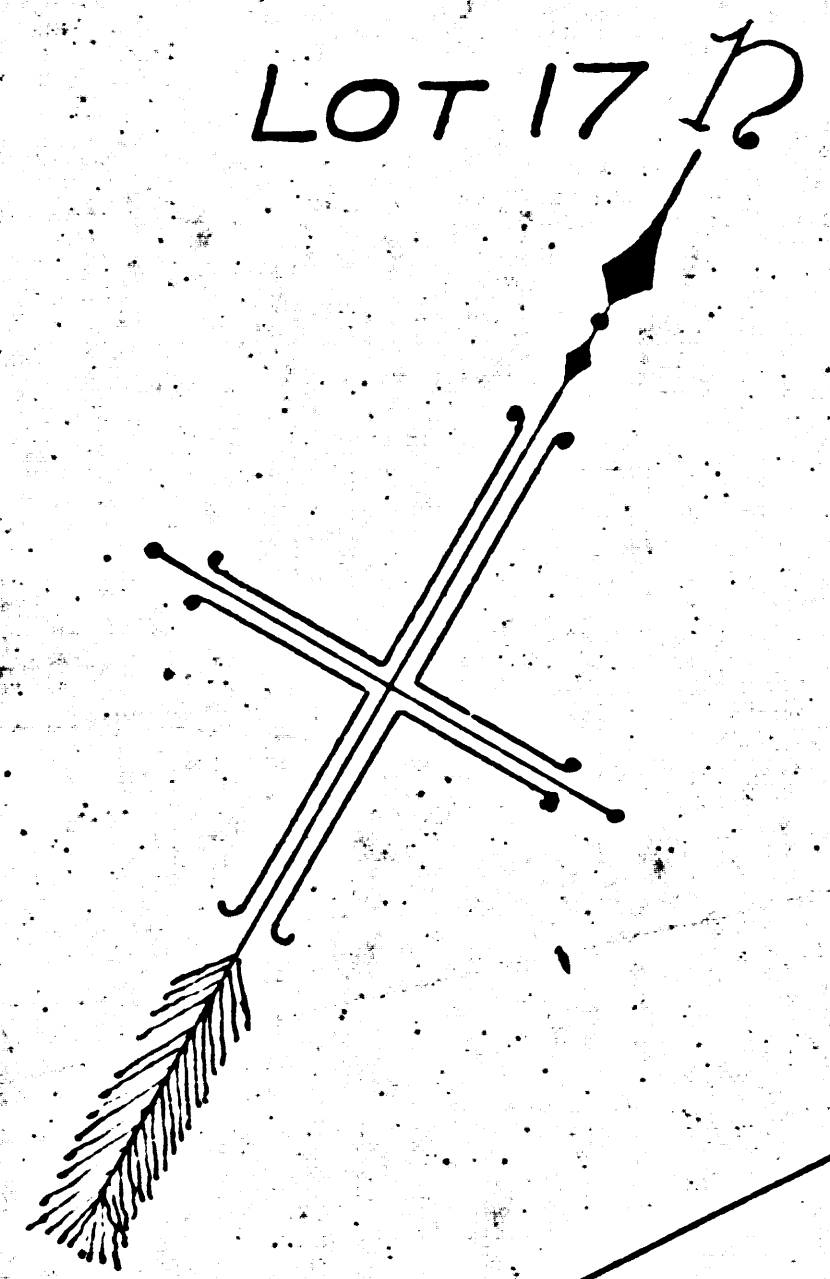


W.R. ROWLAND'S SUBDIVISION OF A PORTION OF RANCHO LA PUENTE
MISC. REC. 42-79

$\Delta = 33^{\circ}26'45''$
 $R = 1000'$
 $ST = 300.45'$
 $LC = 583.74'$

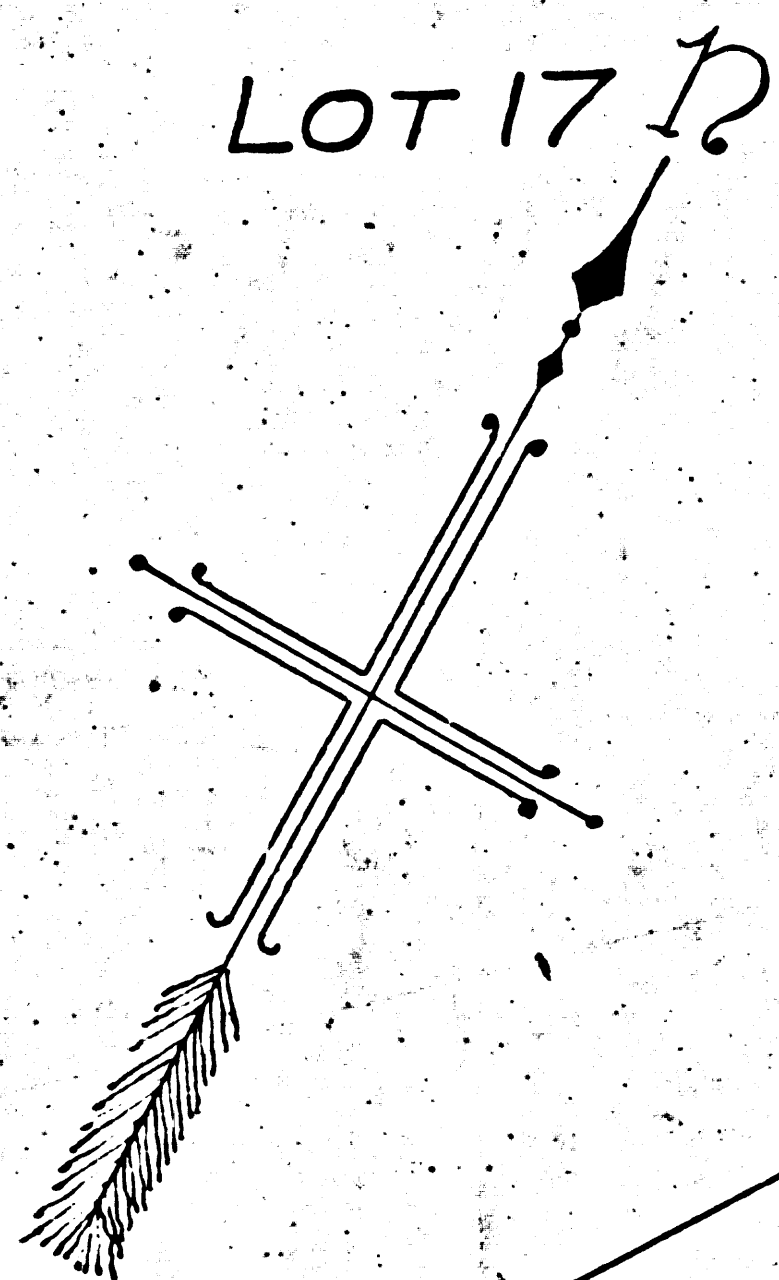
$\Delta = 17^{\circ}11'45''$
 $R = 1000'$
 $ST = 151.19'$
 $LC = 300.12'$

743.91
99.12
644.12



F.M. 13625
A1 OF A2

DOWLAND'S SUBDIVISION OF A PORTION OF RANCHO LA PUENTE
MISC. REC. 42-79



743.91
69.79
644.12

$\Delta = 33^{\circ}26'45''$
 $R = 1000'$
 $S.T. = 300.45'$
 $L.C. = 583.74'$

0.21
1.18
0.03

ROAD

SPADRA

AND

D:4268-268 D:17-32

C.S. 7099

ROAD

C.S. 4140
C.S. 7099

JOSE

LOT 22

AND SPADRA

PACIFIC

COMPANY

LOT 20.

ANAHEIM

VALLEY BV. 1M39
LOS ANGELES COUNTY HIGHWAY
COMMISSION
EL MONTE-POMONA ROAD
DIVISION - 30

Realignment at Anaheim & Spadra Road
Scale, 1"=50'
R.H.A.
F.B. 75-26
Aug. 25 '10

F.M. 13625
A2 OF A2