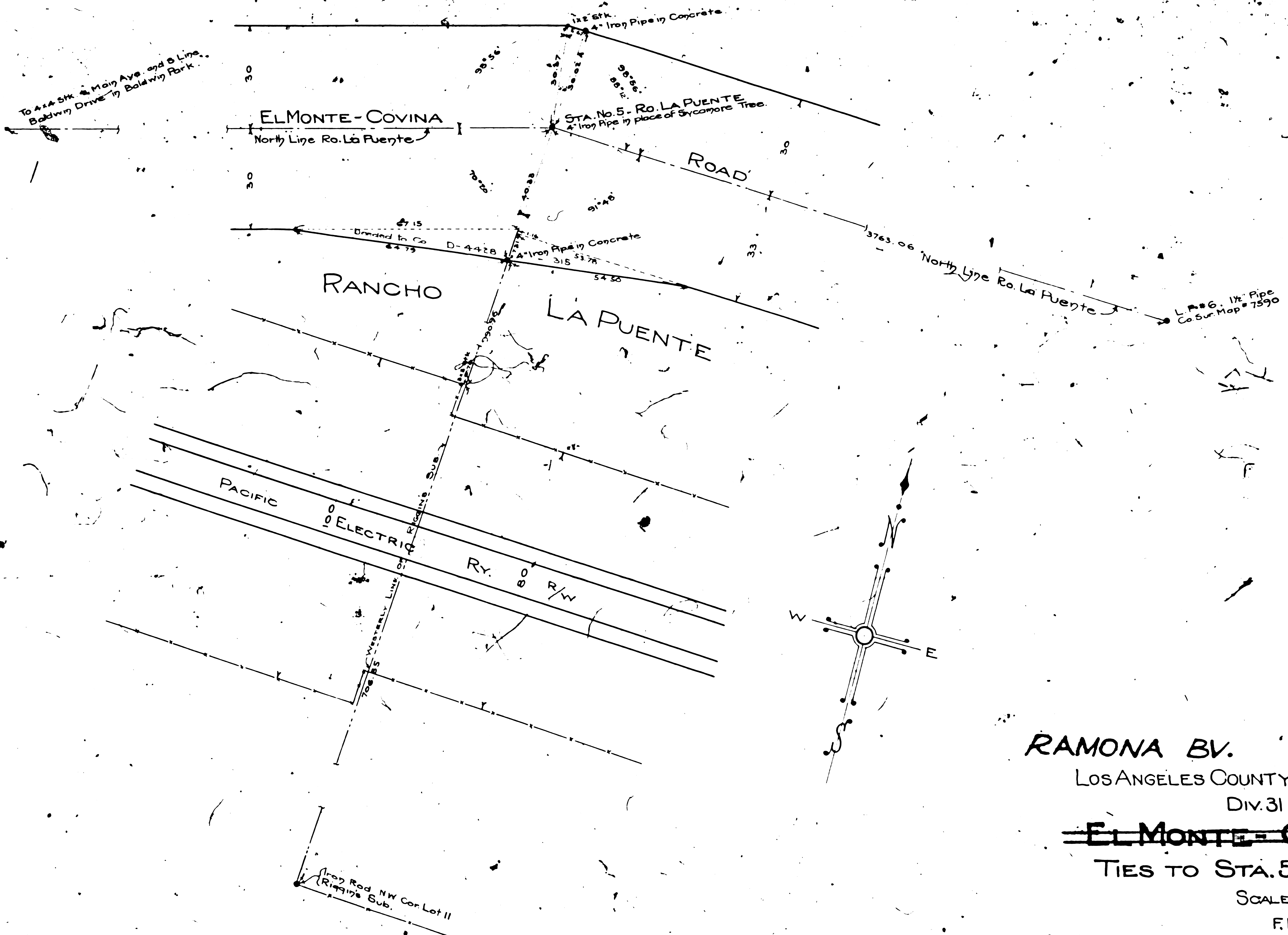


LOT 16
EUGENE RIGGINS' SUB. OF THE HATHAWAY TRACT
M.R. 53-37.



RAMONA BV.
LOS ANGELES COUNTY HIGHWAY COMMISSION
DIV. 31 - SEC. 3
~~EL MONTE-COVINA ROAD~~
TIES TO STA. 5, RO. LA PUENTE
SCALE 1 IN. = 20 FT.

F.M. 13636

F.B. 65
Field Work by A.S.S. Mar. 1911.
Office Work by C.M.W. May, 1911.
Approved May 3, 1911.
R. A. Fisher
Chief Engineer.