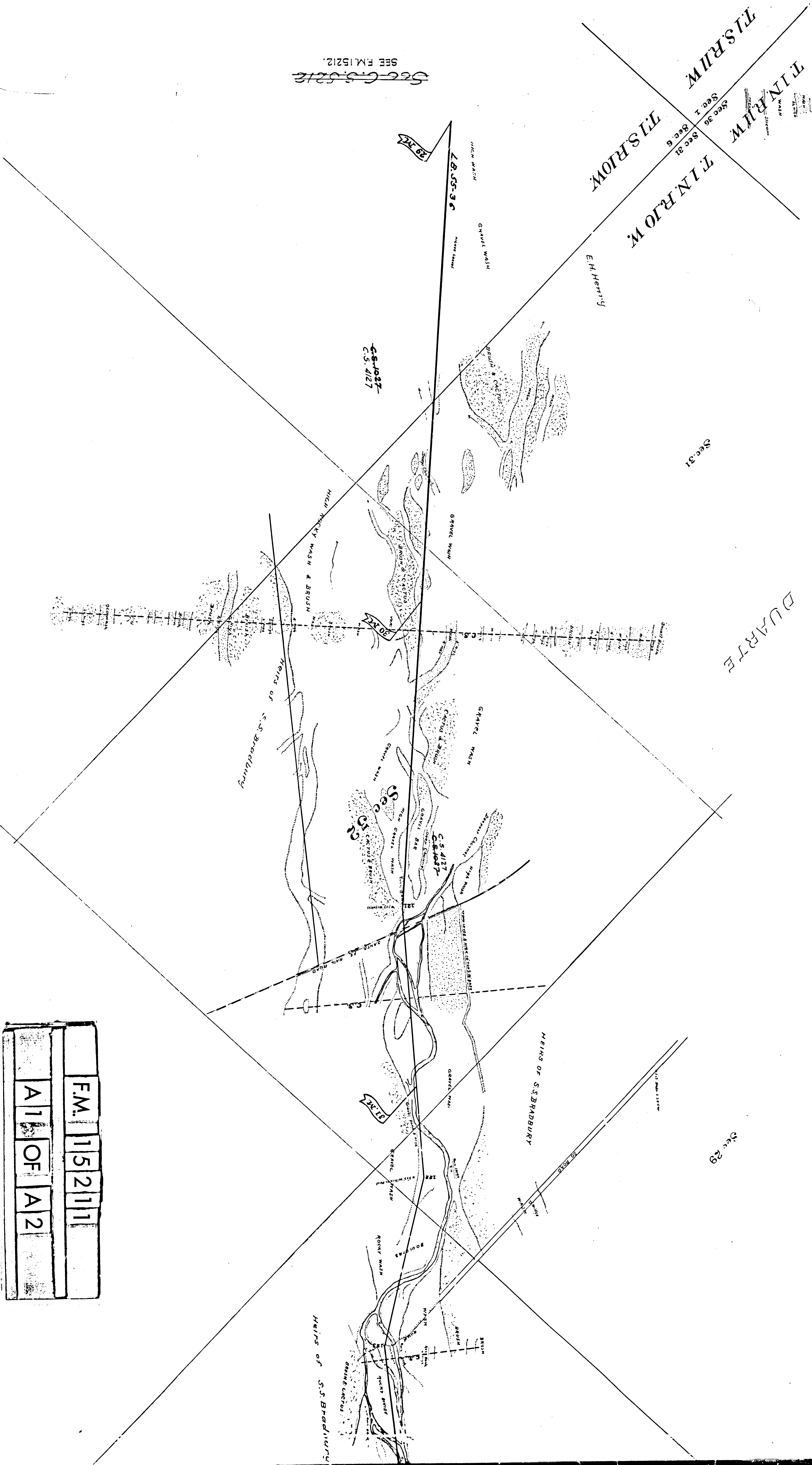


F.M.	1	5	2	1	1
A	1	OF	A	2	



SEE FM. 15212

Sec. 31

Sec. 29

QUARTER

HEIRS OF S.S. BRADBURY

E.H. Henry

Heirs of S.S. Bradbury

C.S. 4127  
C.S. 4127

C.S. 4127  
C.S. 4127

L.B. 35-36

TINIAN RIVER

TINIAN RIVER

TINIAN RIVER

TINIAN RIVER

Sec. 30  
Sec. 31  
Sec. 6

200

200

200

200

200

200

200

200

200

200

200

200

200

200

200

200

200

200

200

200

200

200

200

200

200

200

200

200

200

200

200

200

200

200

200

200

200

200

200

200

200

200

200

200

200

200

200

200

200

200

200

200

200

200

200

200

200

200

200

200

200

200

200

200

200

200

200

200

200

200

200

200

200

200

200

200

200

200

200

200

200

200

200

200

200

200

200

200

200

200

200

200

200

200

200

200

200

200

200

200

200

200

200

200

200

200

200

200

200

200

200

200

200

200

200

200

200

200

200

200

200

200

200

200

200

200

200

200

200

200

200

200

200

200

200

200

200

200

200

200

200

200

200

200

200

200

200

200

200

200

200

200

200

200

200

200

200

200

200

200

200

200

200

200

200

200

200

200

200

200

200

200

200

200

200

200

200

200

200

200

200

200

200

200

200

200

200

200

200

200

200

200

200

200

200

200

200

200

200

200

200

200

200

200

200

200

200

200

200

200

200

200

200

200

200

200

200

200

200

200

200

200

200

200

200

200

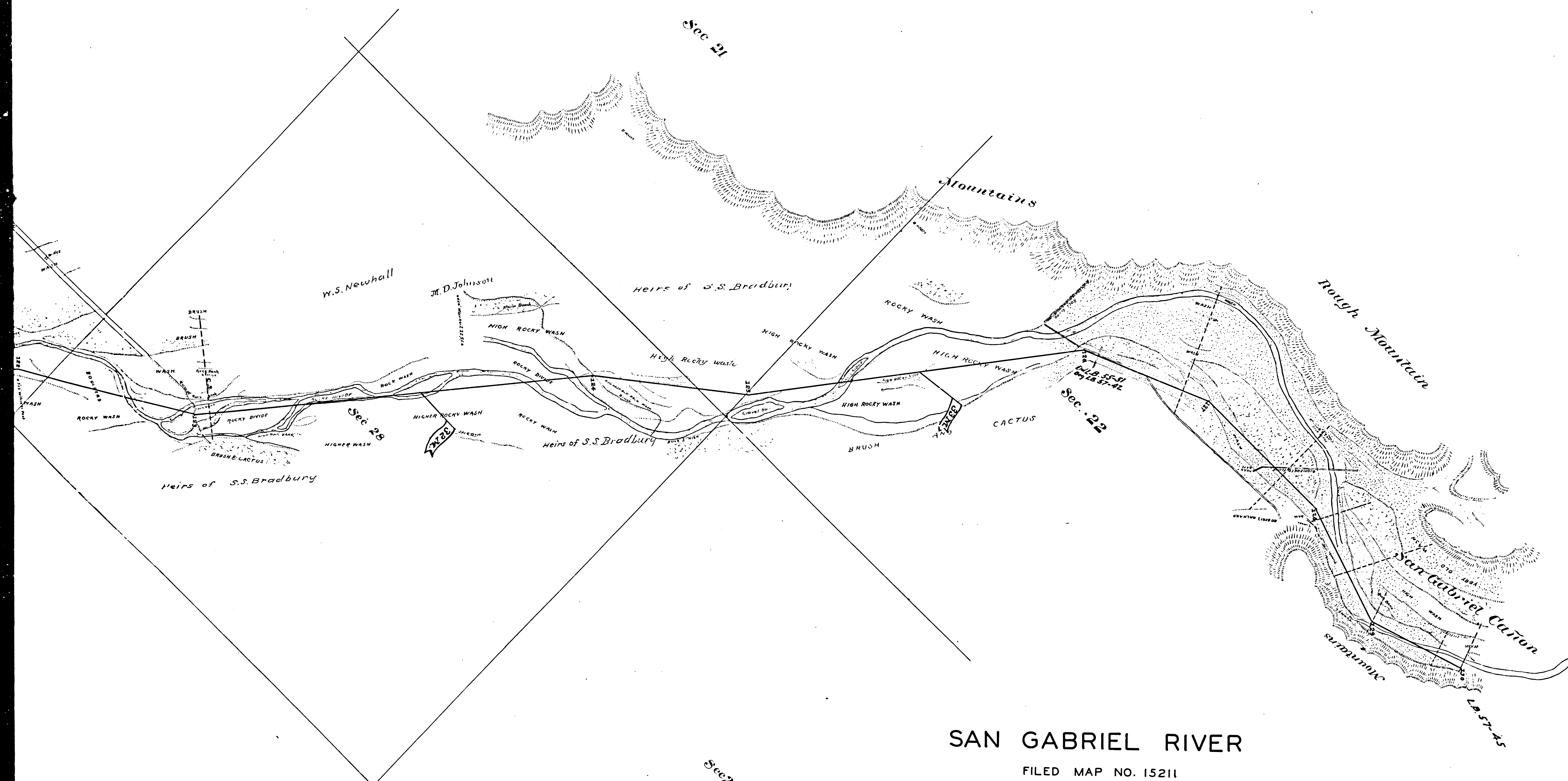
200

200

200

200

200



# SAN GABRIEL RIVER

FILED MAP NO. 15211  
Scale: 1" = 500'

STATE of CALIFORNIA }  
COUNTY of LOS ANGELES } ss

I, J. A. Barnal, being duly sworn, say: That I am a Civil Engineer, Surveyor and Delinquent and have followed said business for 46 years; that I am of the age of 64 years; that I worked with the County Surveyor of Los Angeles County in 1893 and 1894 during which time, I made and compiled this map from field notes, from records in the County Recorder's office, and from the County Assessor's Map Books.

*J. A. Barnal*  
Subscribed and sworn to before me this 14th day of March, 1921. - E. W. ... Clerk.  
By E. W. ... Deputy.

F.M.	15211
A 2	OF A 2