

F.M. 15212
A 2 OF A 4



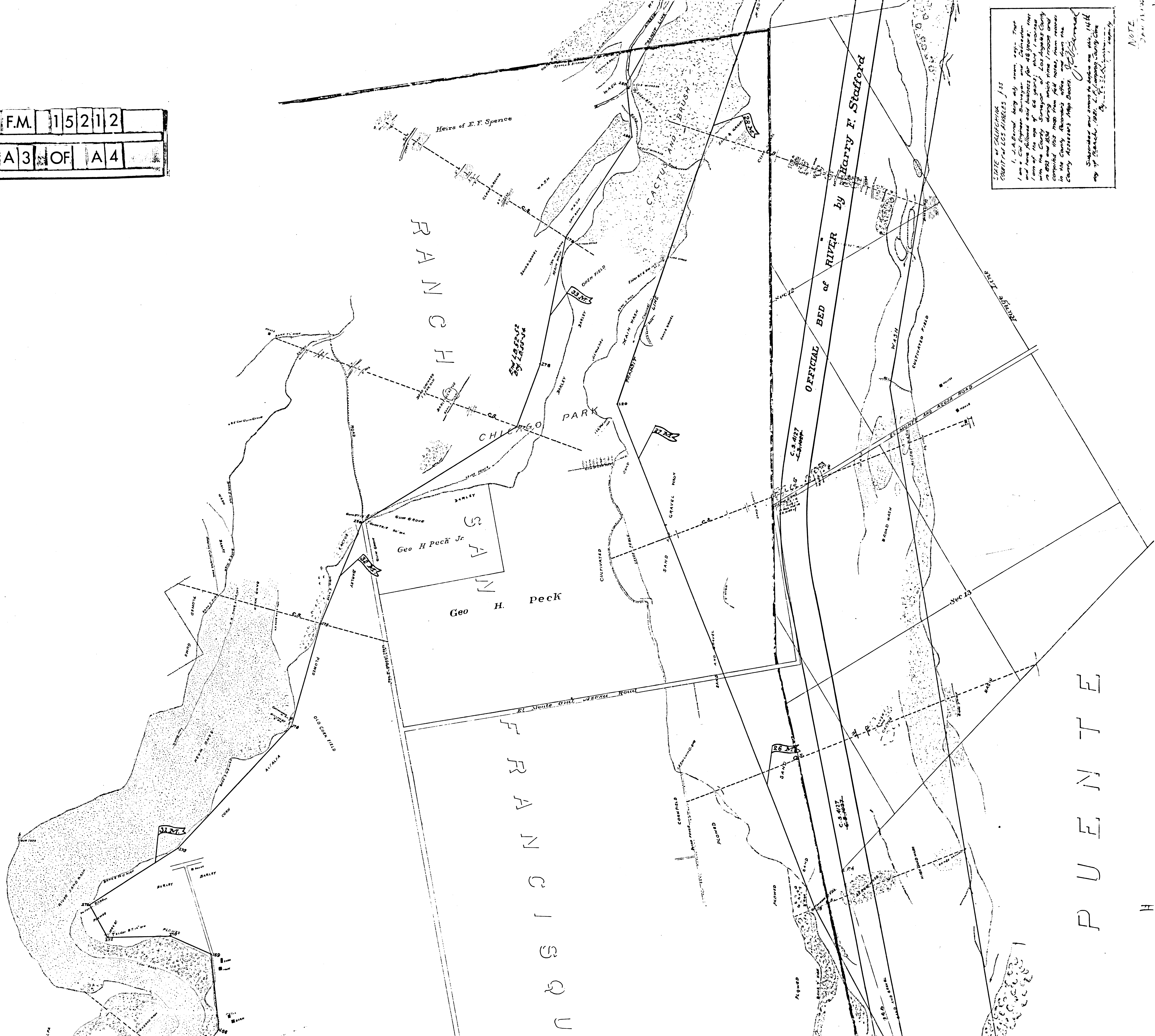
15212
A 2 OF A 4

RANCHO POTRERO DE FELIPE LUGO

RAMBLA

H

F.M. 15212
A 3 OF A 4



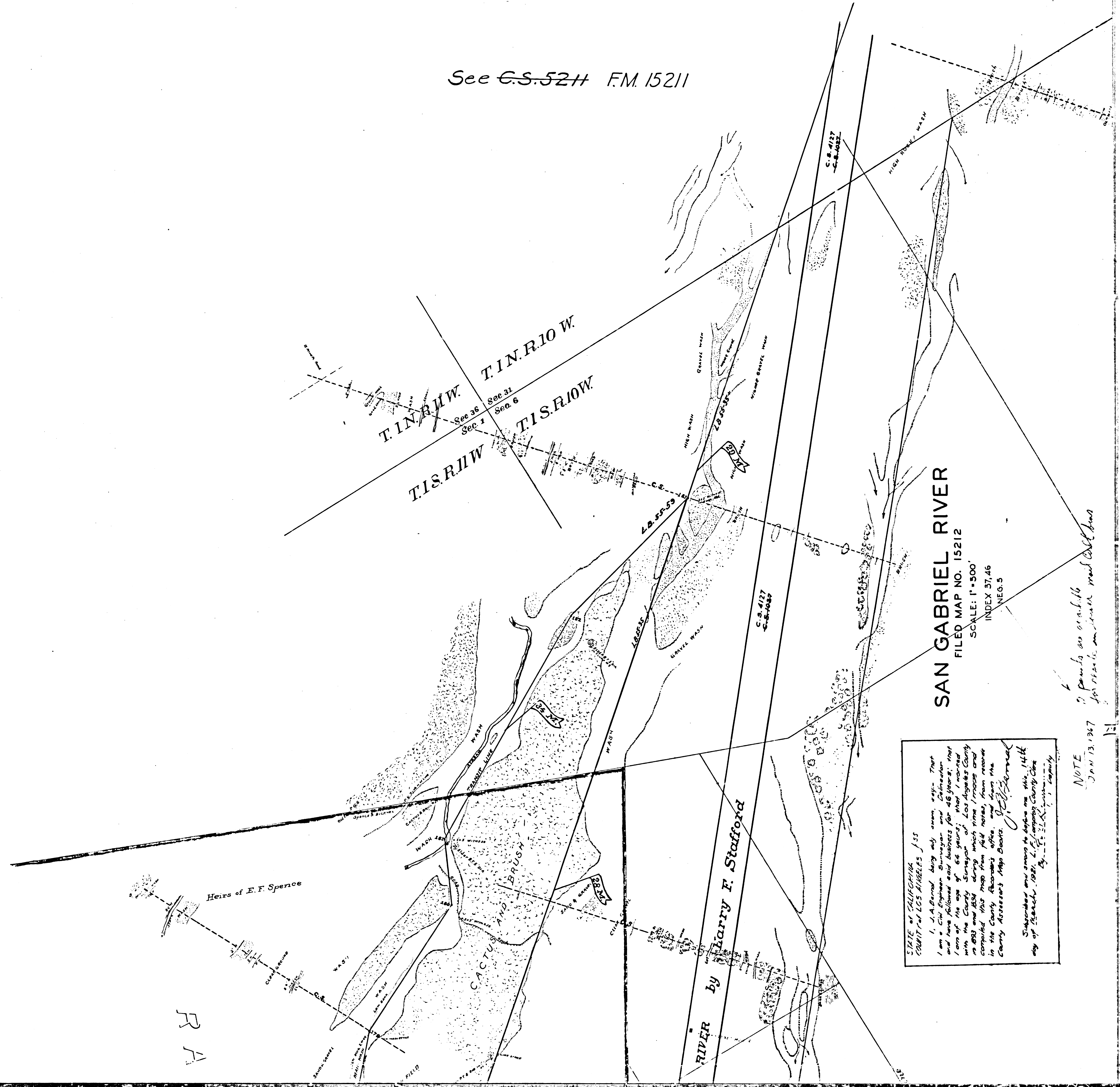
STATE OF CALIFORNIA
COUNTY OF LOS ANGELES / 35
I, J. A. Beard, being duly sworn, depose that I am a Civil Engineer, Surveyor and Chainman and have followed said business for 48 years; that I am of the age of 66 years; that I reside in the City of Los Angeles, California; that I am duly sworn and qualified in the County of Los Angeles, California; that I have personally examined the above described map and have compiled the same from field notes, plans, records in the County Assessor's office, and from the County Assessor's Maps Books; that I have compared the same with the original map of this 14th day of March, 1921, filed in the County Clerk's office, and I certify that the same is a true and correct copy of the original map as filed in said office.
J. A. Beard
NOTE
JAN 13 1921

P U E N T E

H

F.M.	1	5	2	1	2
A	4	OF	A	4	

See G.S. 5211 F.M. 15211



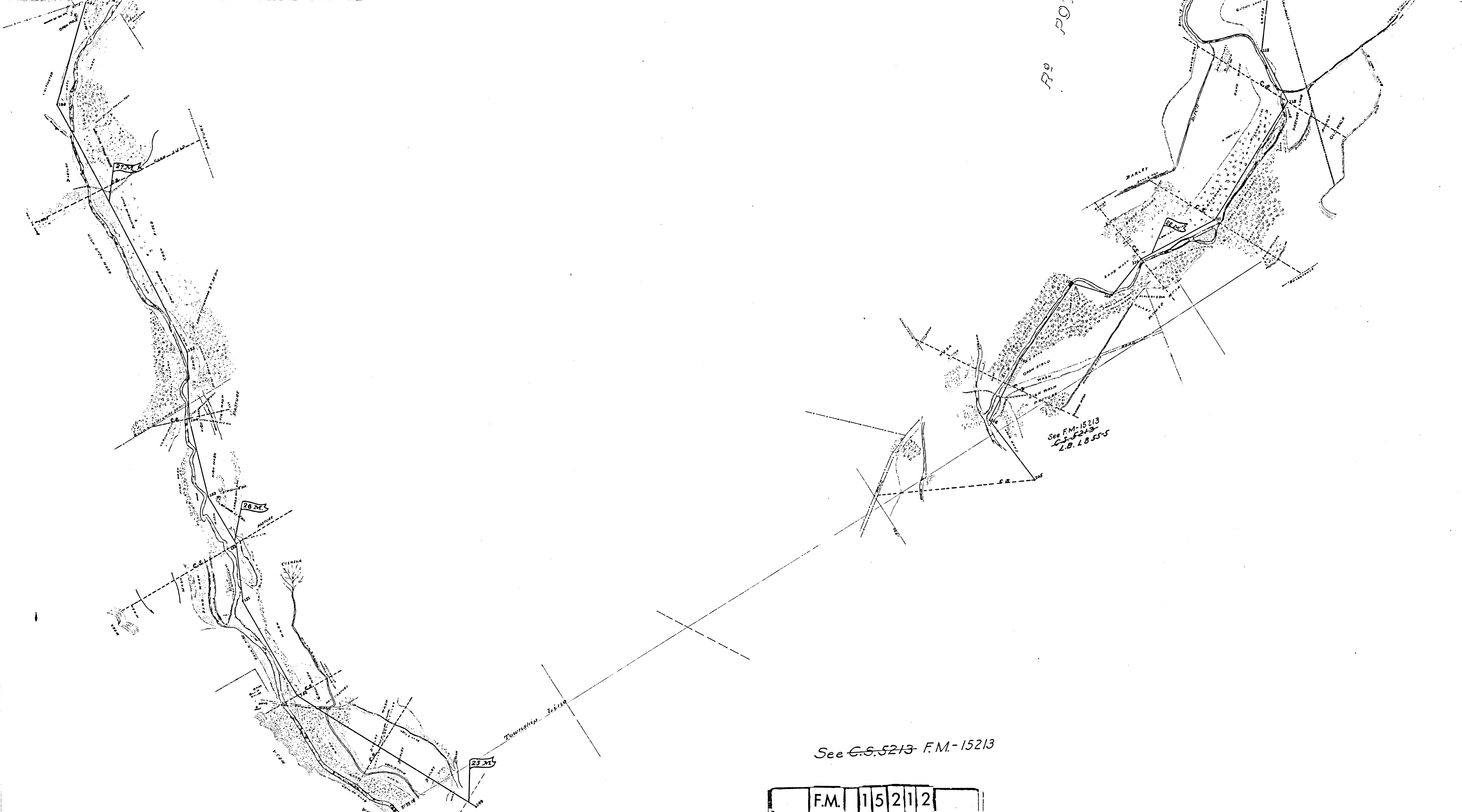
SAN GABRIEL RIVER
 FILED MAP NO. 15212
 SCALE: 1" = 500'
 INDEX 37.46
 NEG. 5

STATE OF CALIFORNIA
 COUNTY OF LOS ANGELES
 I, J.A. Bond, being duly sworn, say: That I am a Civil Engineer, Surveyor and Chainman and the above described map is a true and correct copy of the original map of the County Surveyor of Los Angeles County, made in 1883 and 1884 during which time I reside and compiled this map from field notes, from records in the County Recorder's office, and from the County Assessor's Map Books.
 Witness my hand and seal on this 14th day of March, 1927, at Los Angeles, California.
 J.A. Bond
 Civil Engineer, Surveyor and Chainman

NOTE
 2 points are available for record in river and old channel
 Jan 13, 1927

R A

R⁹ P⁰



See F.M. 15213
L.B. 1855-5

See ~~G.S. 5213~~ F.M. 15213

T1S R12W T1S R11W
T2S R12W T2S R11W

F.M. 15213
G.S. 5213
L.B. 52-24

23 7/16

F.M.	1	5	2	1	2
A	1	OF	A	4	