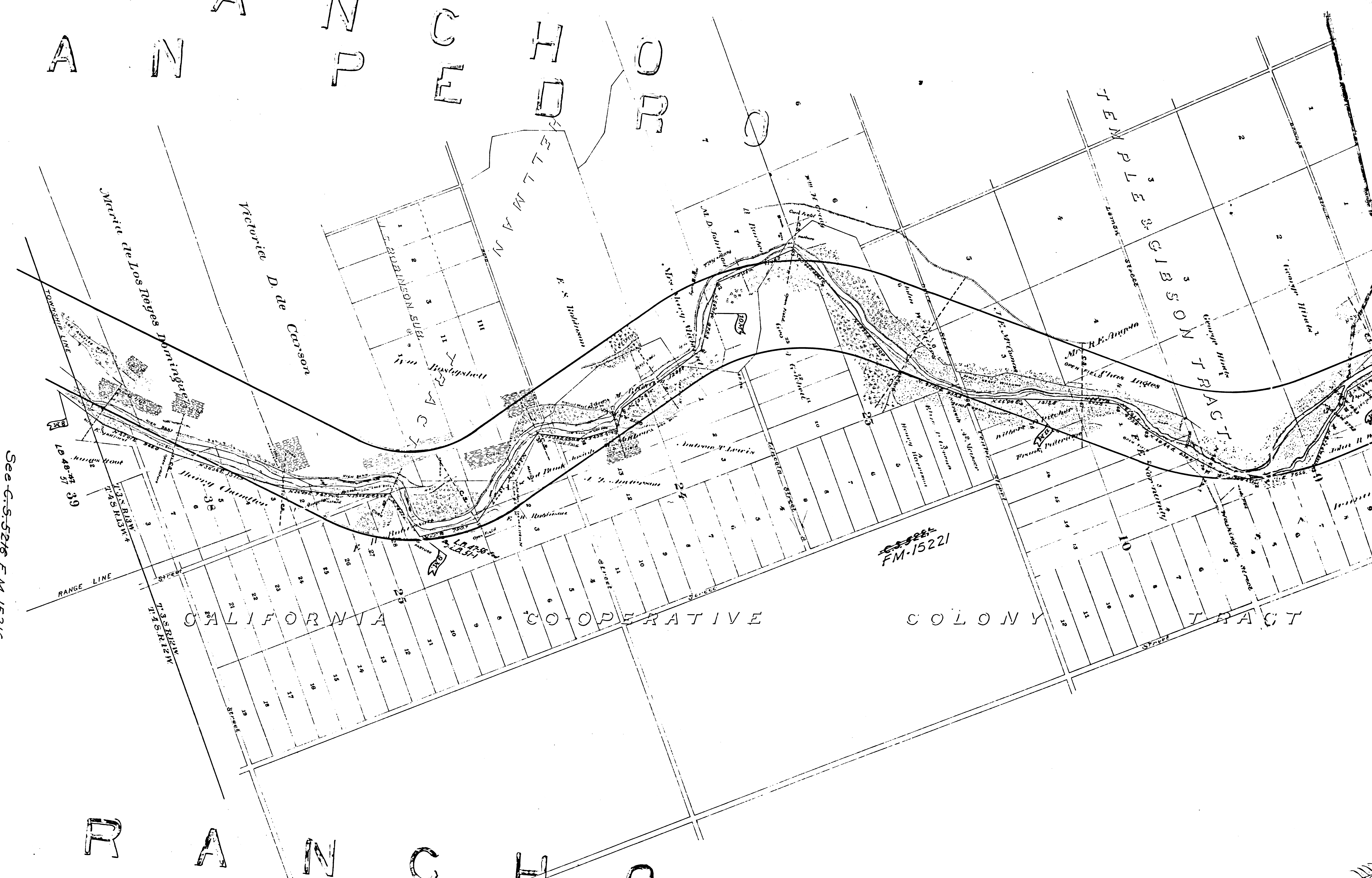


S A N A N R C H O



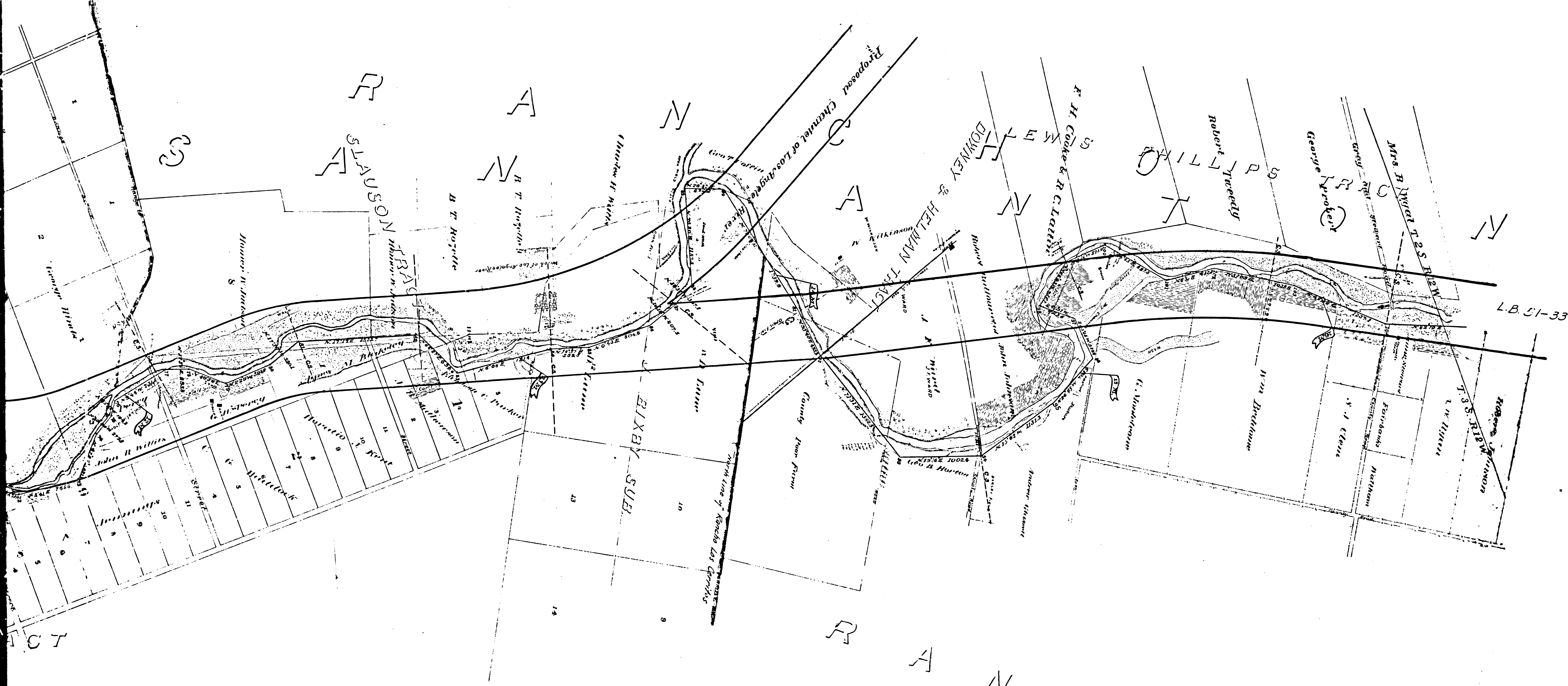
See G.S. 5216 F.M. 15216

FM-15221

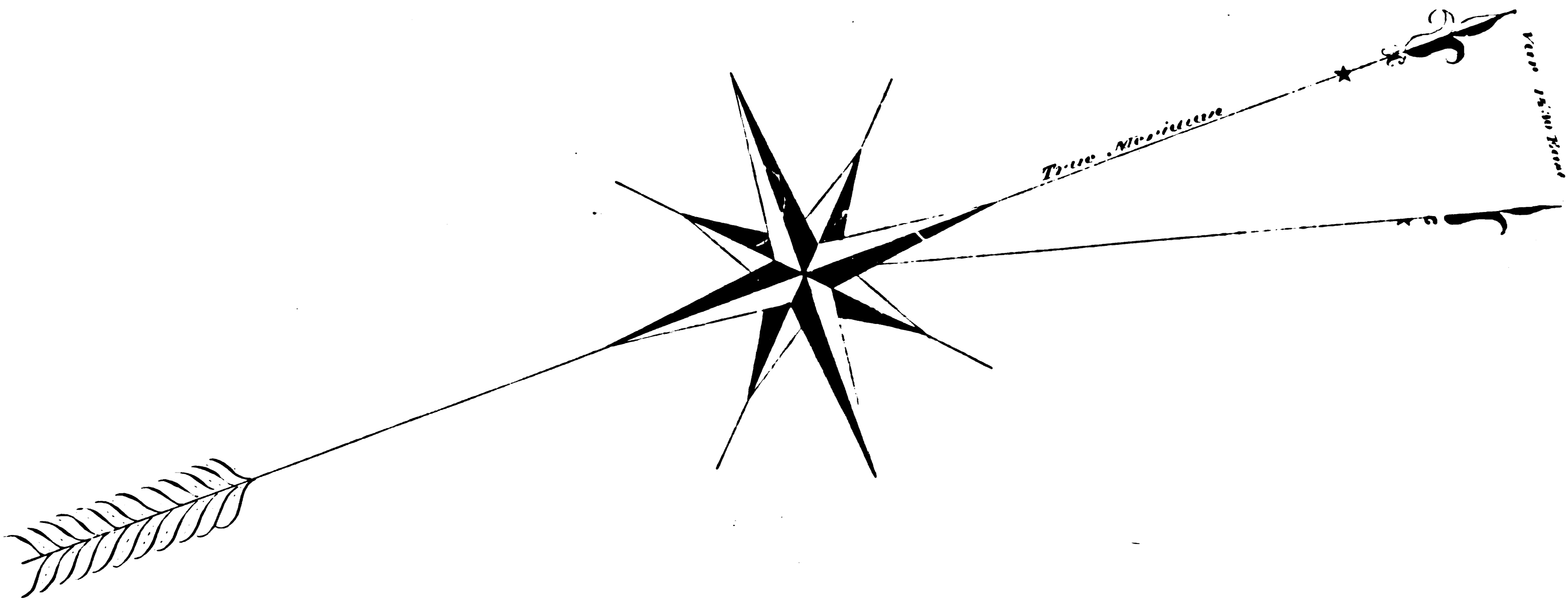
CALIFORNIA CO-OPERATIVE COLONY TRACT

F O C E R I T O S

FM	15215
A1	OF A2



See F.M. 15214



Scale: 1 inch = 500 ft.

STATE OF CALIFORNIA } ss
 COUNTY OF LOS ANGELES } ss

I, J. A. Berndt, being duly sworn say - That I am a Civil Engineer, Surveyor and Diligent and have followed said business for 46 years; that I am of the age of 84 years; that I resided with this County Surveyor of Los Angeles County in 1853 and 1854 during which time, I made and compiled this map from field notes, from records in the County Recorder's office, and from the County Assessor's Maps Books.

Witness my hand and seal this 11th day of October 1881. J. A. Berndt, County Clerk

By _____ Deputy

OLD SAN GABRIEL RIVER

FILED MAP NO. 15215

INDEX 32

NEG. 5

F.M.	15215
A 2	OF A 2