

B
R
A
N
C
H
D

H
C
L
R

F.M. 15216
A2 OF A4



D O M I N G U E Z C O L O N Y

Susana M. Dominguez
or
Gregorio and Susana del Amo

Gregorio and Susana Del Amo

Maria Reyes de Fran

Victoria D. de Carson

Victoria D. de Carson

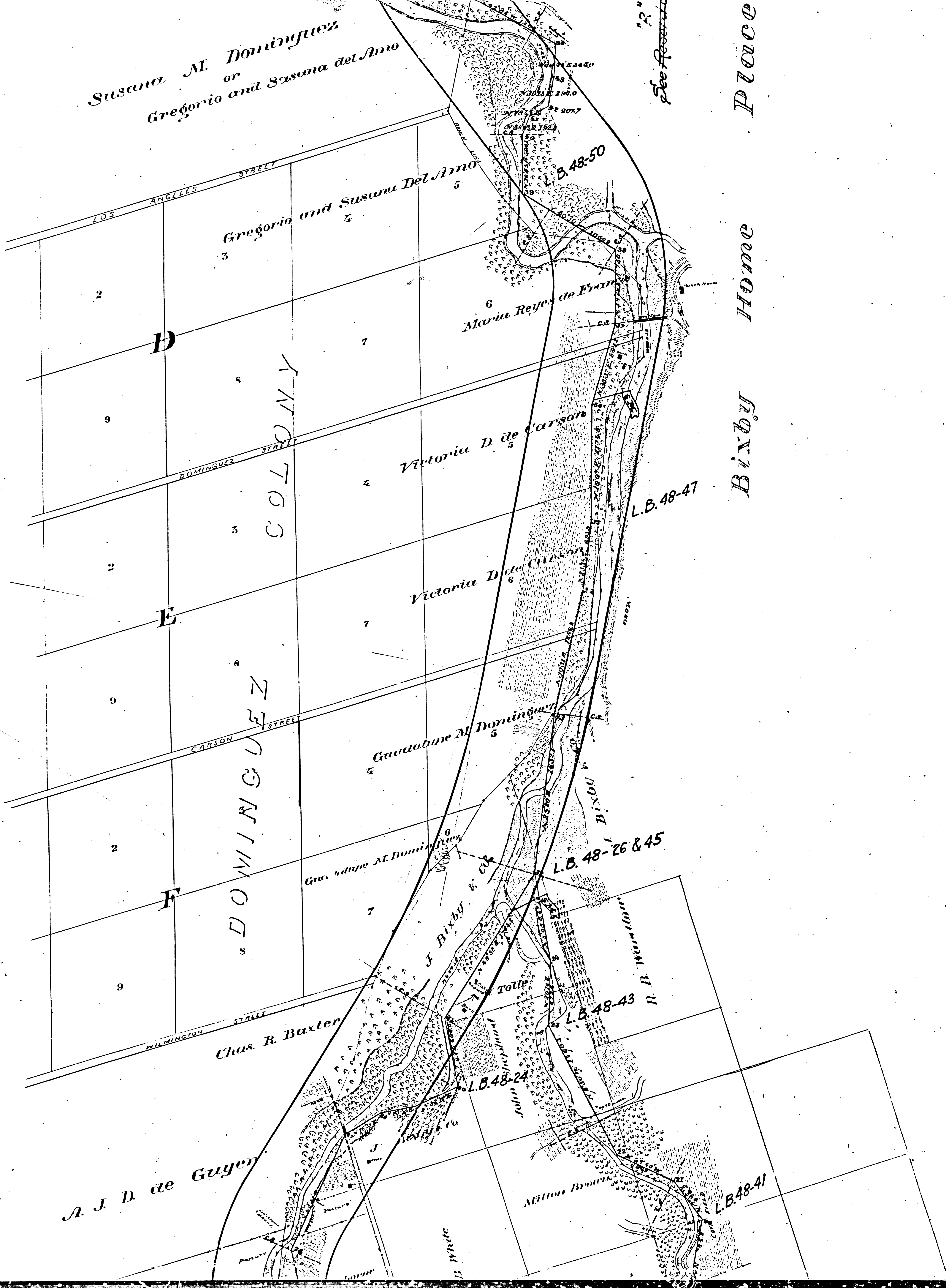
Guadalupe M. Dominguez

Guadalupe M. Dominguez

Chas. R. Baxter

A. J. D. de Guyer

Bixby Home Place

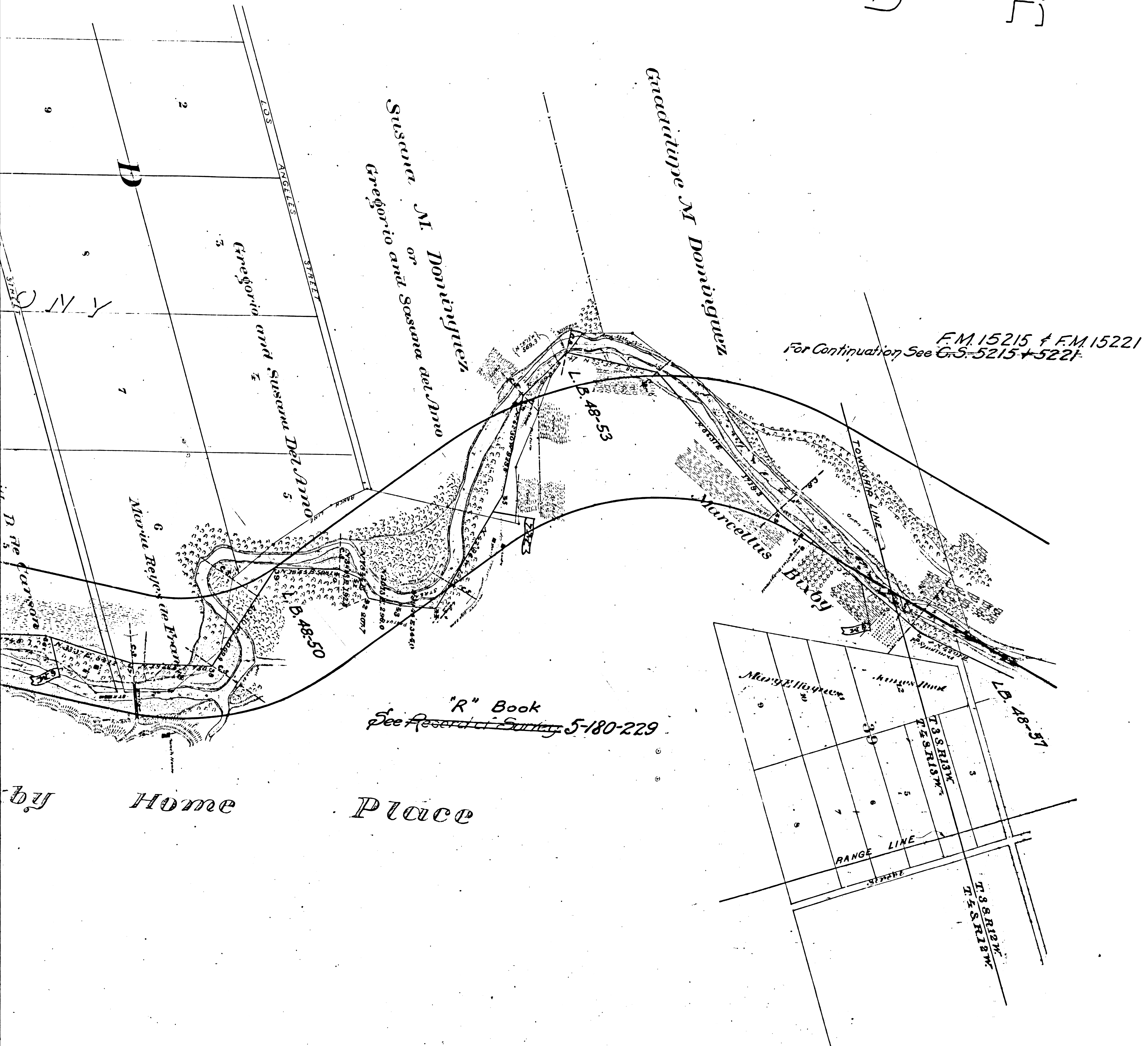


STATE OF CALIFORNIA
COUNTY OF LOS ANGELES
I, J. A. Bann
County Clerk
do hereby certify that the
above plat is a true and
correct copy of the original
as the same appears from
the records of the County
Clerk of Los Angeles
County, California
this 17th day of
August, 1918

H O R R I T O S

F.M.	15216
A 3	OF A 4

SAN GABRIEL



OLD SAN GABRIEL RIVER

FILED MAP NO. 15216
I.M. 30
Neg. 9

F.M. 15216
A 4 OF A 4

Scale: 1 in. = 500 ft.

STATE OF CALIFORNIA }
COUNTY OF LOS ANGELES } ss

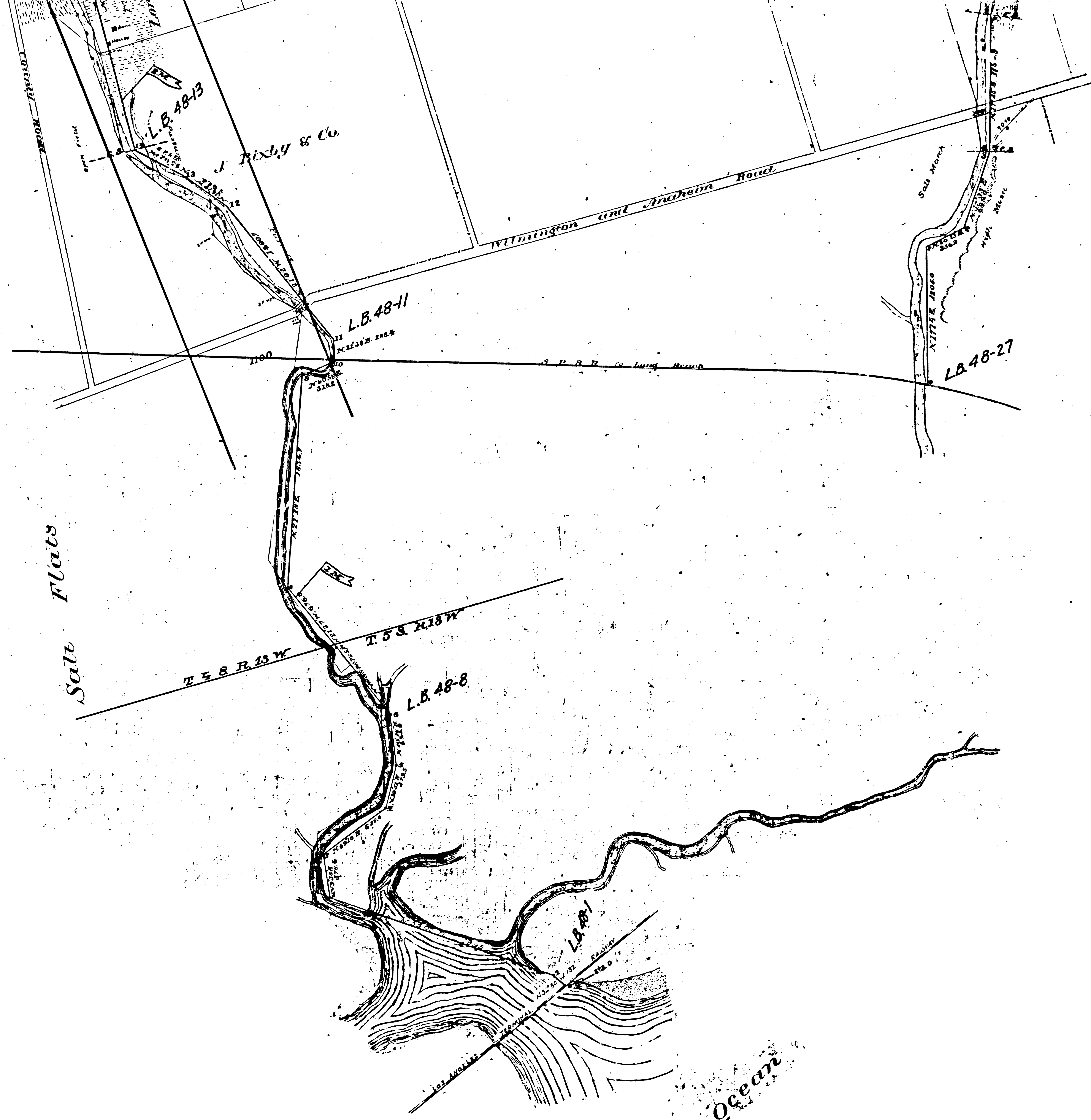
I, J. A. Barred, being duly sworn, say: That I am a Civil Engineer, Surveyor and Delimeter and have followed said business for 48 years; that I am of the age of 64 years; that I worked with the County Surveyor of Los Angeles County in 1893 and 1894 during which time, I made and compiled this map from field notes, from records in the County Recorder's office, and from the County Assessor's Map Books.

J. A. Barred

Subscribed and sworn to before me this 10th day of December, 1921. L. E. Lempson County Clerk.

By *J. A. Barred* Deputy.

"R" Book
See ~~Record Survey~~ 5-180-229



Pacific

F.M.	15216
A 1	OF A 4