

LOS

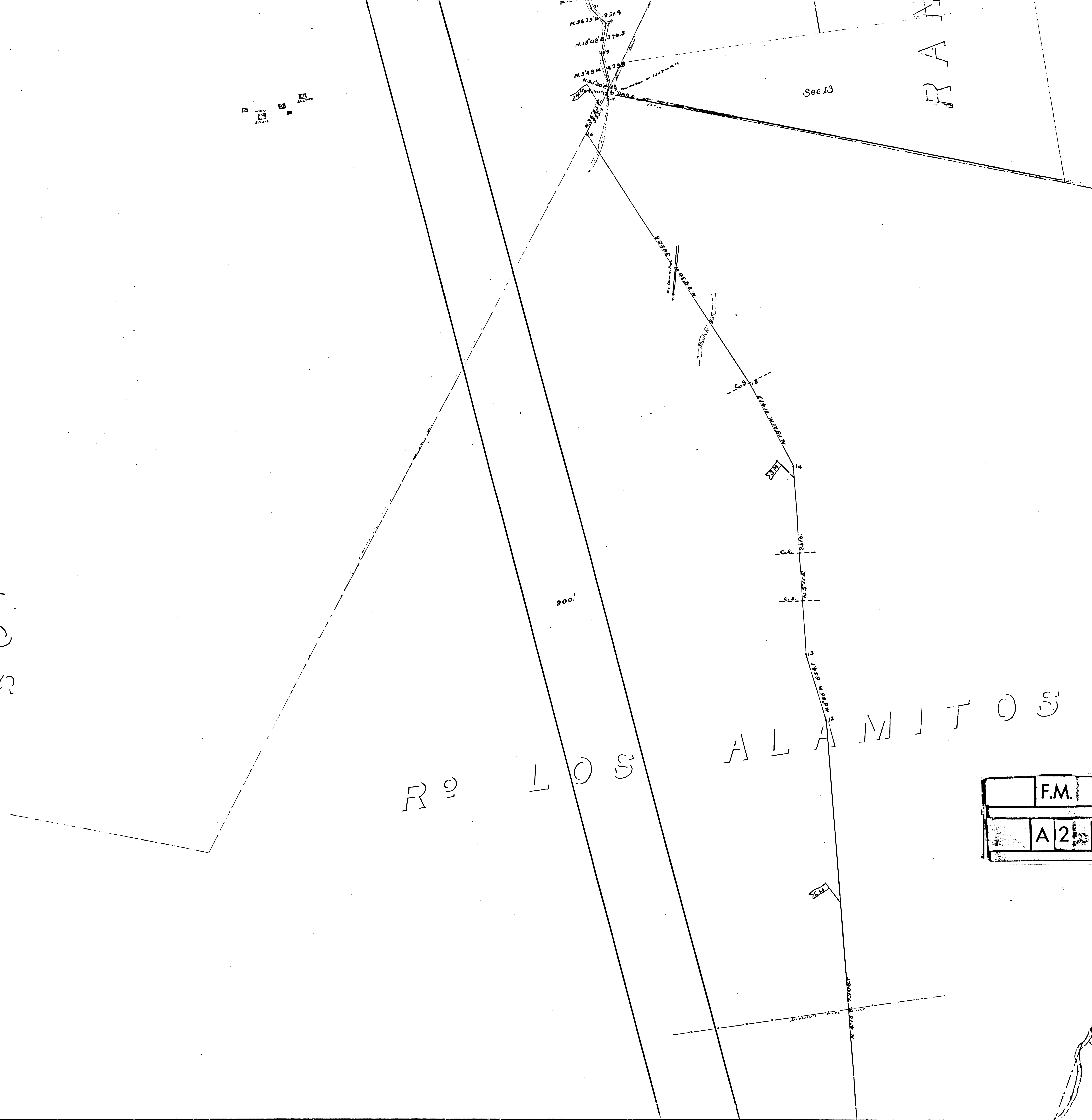
GERRITOS

R²

LOS

ALAMITOS

F.M.	15219
A2	OF A3



F.M.	15219
A3	OF A3

F.M. 15218
Sec C.C. 5218

Geo. F. Bixby

SO T
CO R

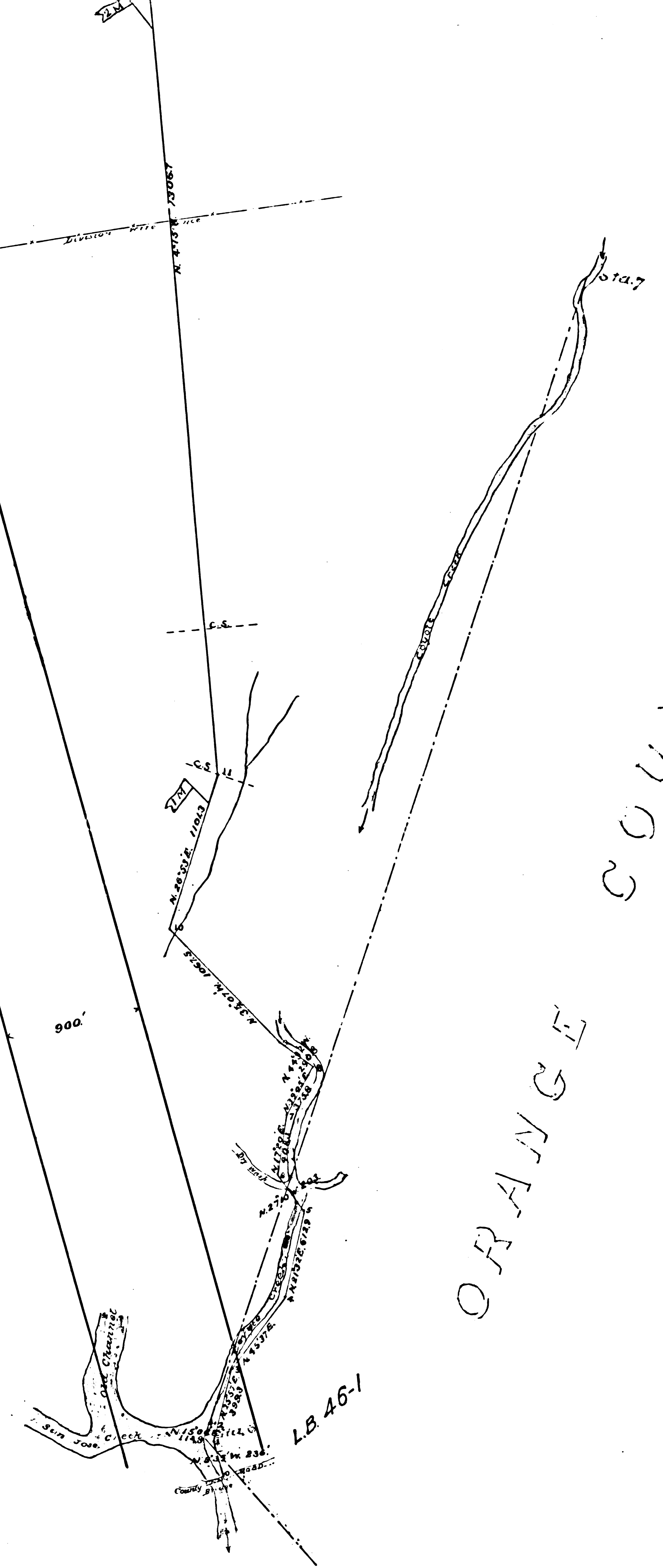


LOS
COT
RANCH

NEW SAN GABRIEL RIVER

FILED MAP NO. 15219
SCALE: 500' = 1 IN.
NEG. 14
I.M. 31

NEG. 14
STATE OF CALIFORNIA } ss
COUNTY OF LOS ANGELES } ss
I, J.A. Bernal, being duly sworn, say: That I am a Civil Engineer, Surveyor and Delineator and have followed said business for 46 years; that I am of the age of 64 years; that I worked with the County Surveyor of Los Angeles County from 1850 and 1854 during which time I made and corrected the field notes, from records in the County Recorder's office, and from the County Assessor's Map Books. *J.A. Bernal*
Subscribed and sworn to before me this 14th day of March, 1921. *L.F. Lampton* County Clerk.
By *L.F. Lampton* Deputy.



F.M.	15219	
A1	OF	A3