



SLAUSON TRACT

C.S. 5215  
F. M. 15215

F.M.	1	5	2	2	1
A 3	OF	A 4			

14

14

See C.S. 5220

T. 2 S. R. 13 W.  
T. 3 S. R. 13 W.

T. 2 S. R. 12 W.  
T. 3 S. R. 12 W.

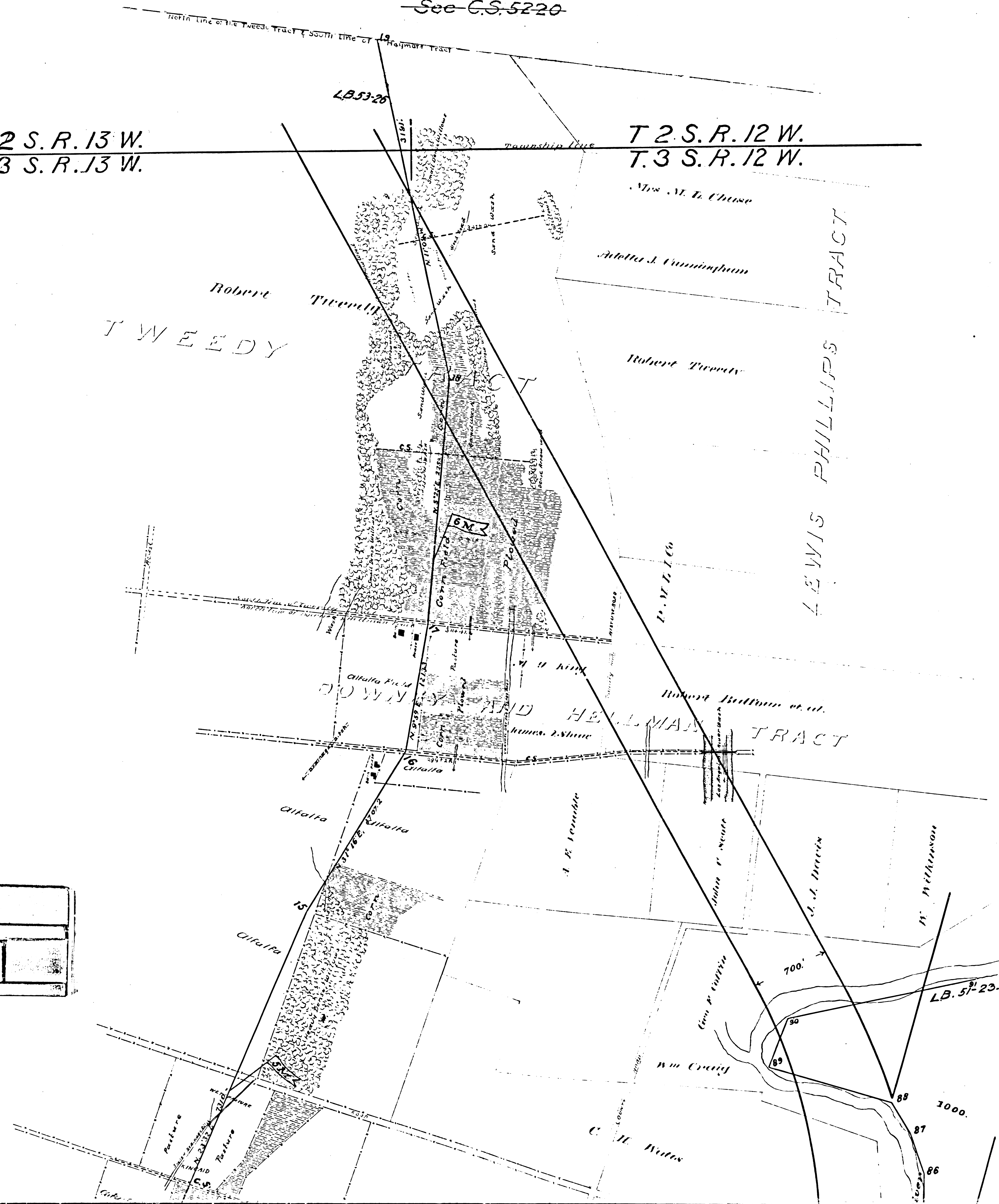
TWEEDY

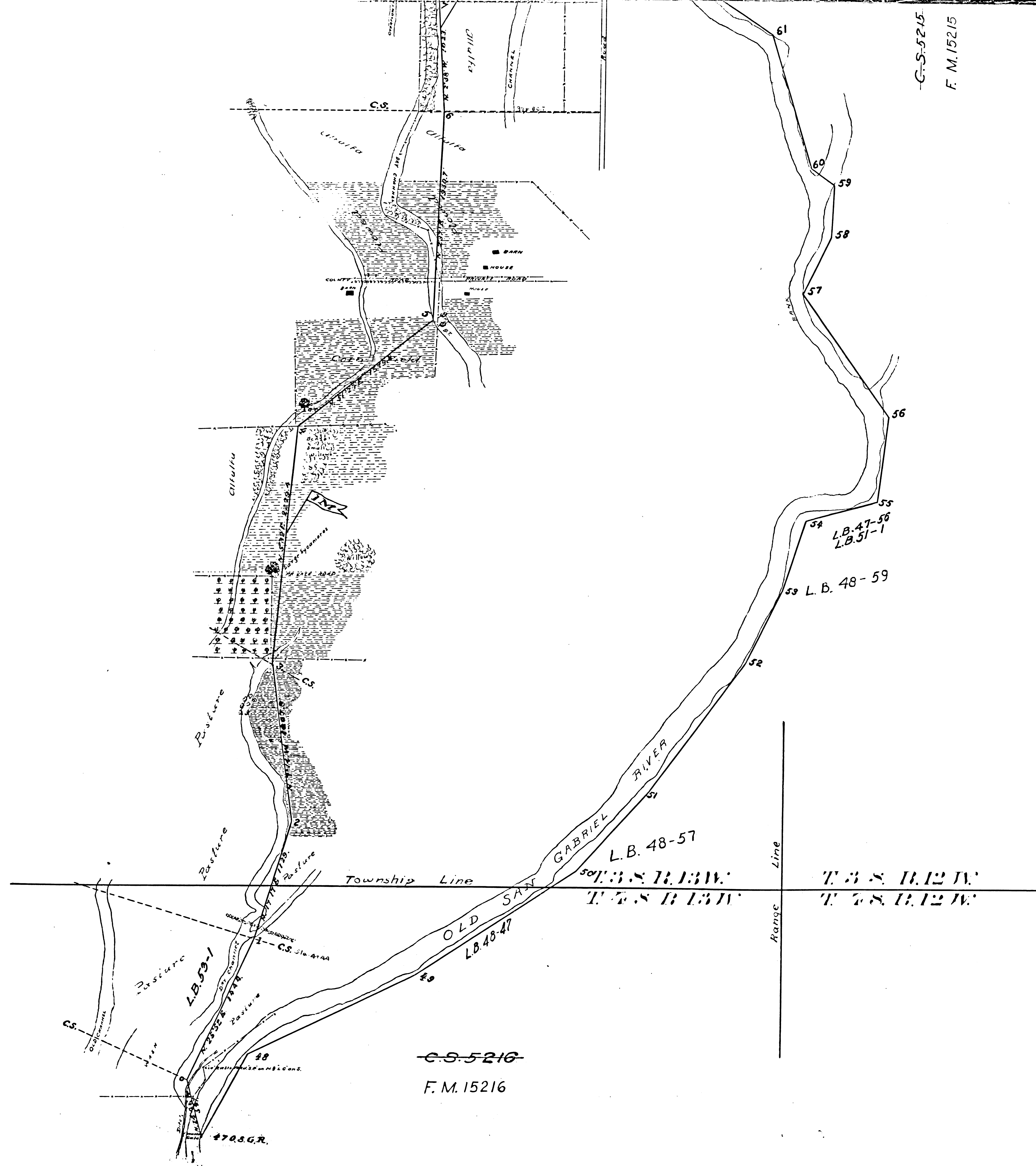
LEWIS PHILLIPS TRACT

HELLMAN TRACT

F.M.	1	5	2	2	1
A	4	OF	A	4	

C.S. 5215  
F. M. 15215





C-S-5215  
F. M. 15215

# LOS ANGELES RIVER

FILED MAP NO. 15221

SCALE: 500' = 1 IN.

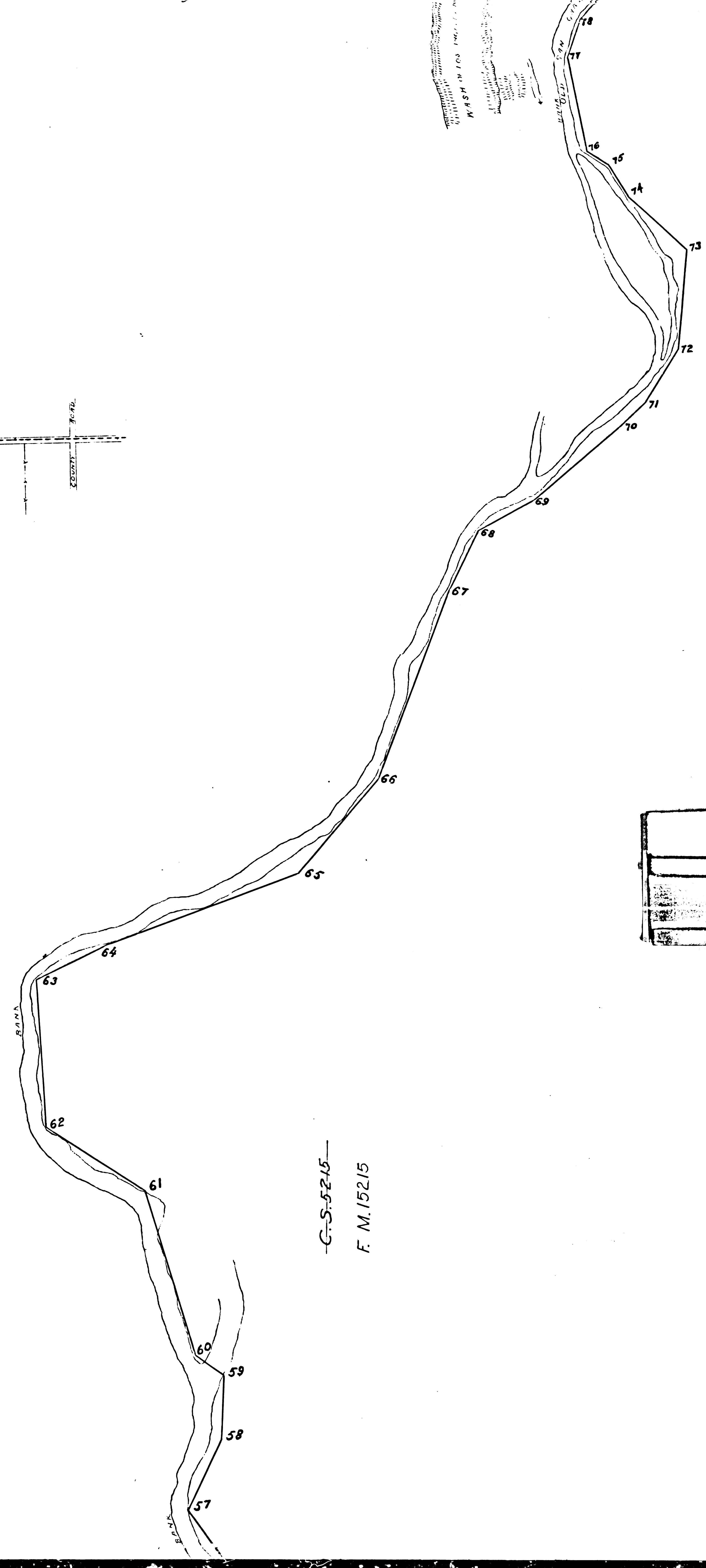
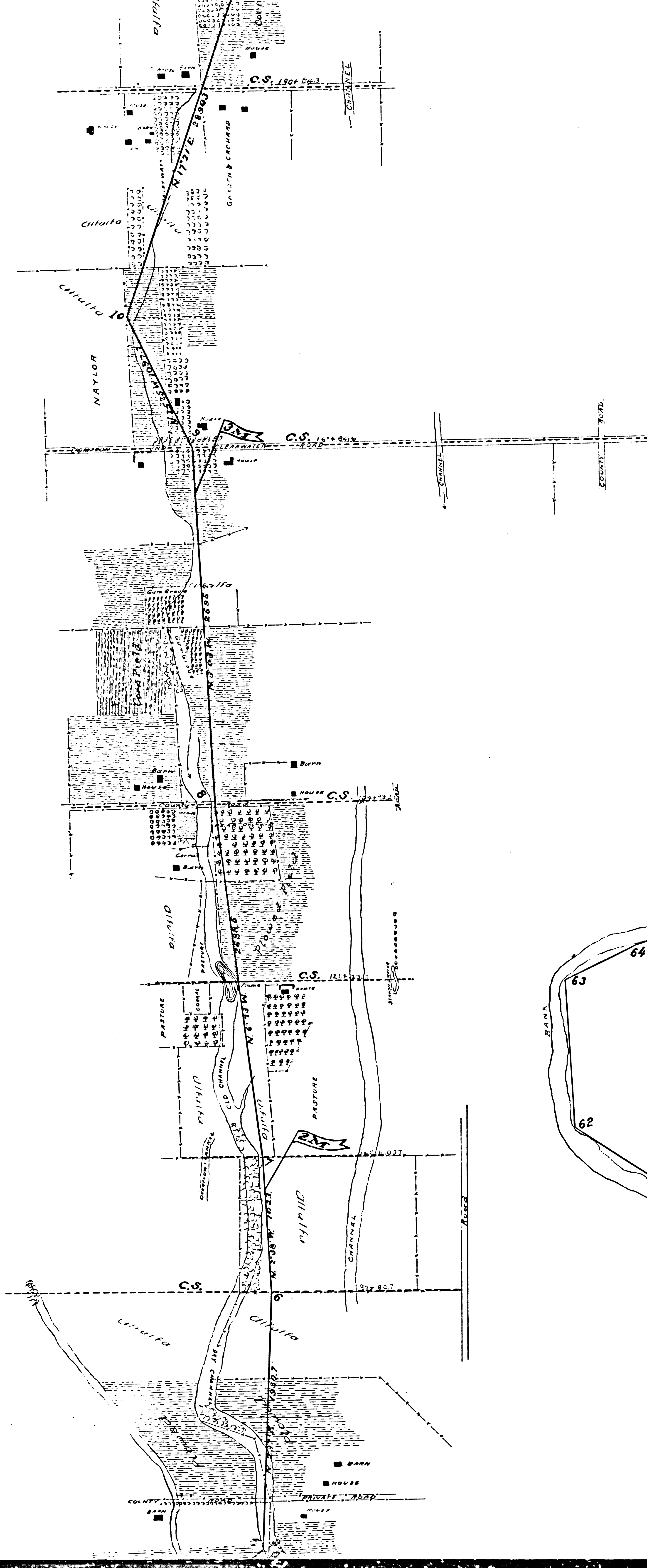
NEG. 17

1 M 32

STATE OF CALIFORNIA  
COUNTY OF LOS ANGELES } 35  
I, J. A. Bernal, being duly sworn a Civil Engineer, Surveyor and have followed said business for some of the age of 64 years, with the County Surveyor or in 1888 and 1894 during which he compiled this map from field notes in the County Recorder's office in the County Assessor's Map Books, 1  
Subscribed and sworn to at the City of Los Angeles, 1921, J. E. Loma  
By: [Signature]

C-S-5216  
F. M. 15216

F.M.	1	5	2	2	1
A	1	OF	A	4	



-C-S-5215-  
F. M. 15215

F.M.				15221							
A 2				OF				A 4			

STATE OF CALIFORNIA }  
COUNTY OF LOS ANGELES } 55

I, J. A. Bernal, being duly sworn, say: That I am a Civil Engineer, Surveyor and Delinctor and have followed said business for 46 years; that I am of the age of 64 years; that I worked with the County Surveyor of Los Angeles County in 1893 and 1894 during which time I made and compiled this map from field notes, from records in the County Recorder's office and from the County Assessor's Map Books.

Subscribed and sworn to before me this 11<sup>th</sup> day of March, 1921, at Los Angeles County Clerk.

By *[Signature]* County Deputy