

County Surveyor's Map No. 5846

MAP SHOWING  
**HARBOR LINES, TIDE LANDS,  
PATENTS, ETC.**  
**WILMINGTON & SAN PEDRO**  
— CITY OF LOS ANGELES, CAL. —

HOMER HAMLIN, CITY ENGINEER SEPTEMBER 1909.

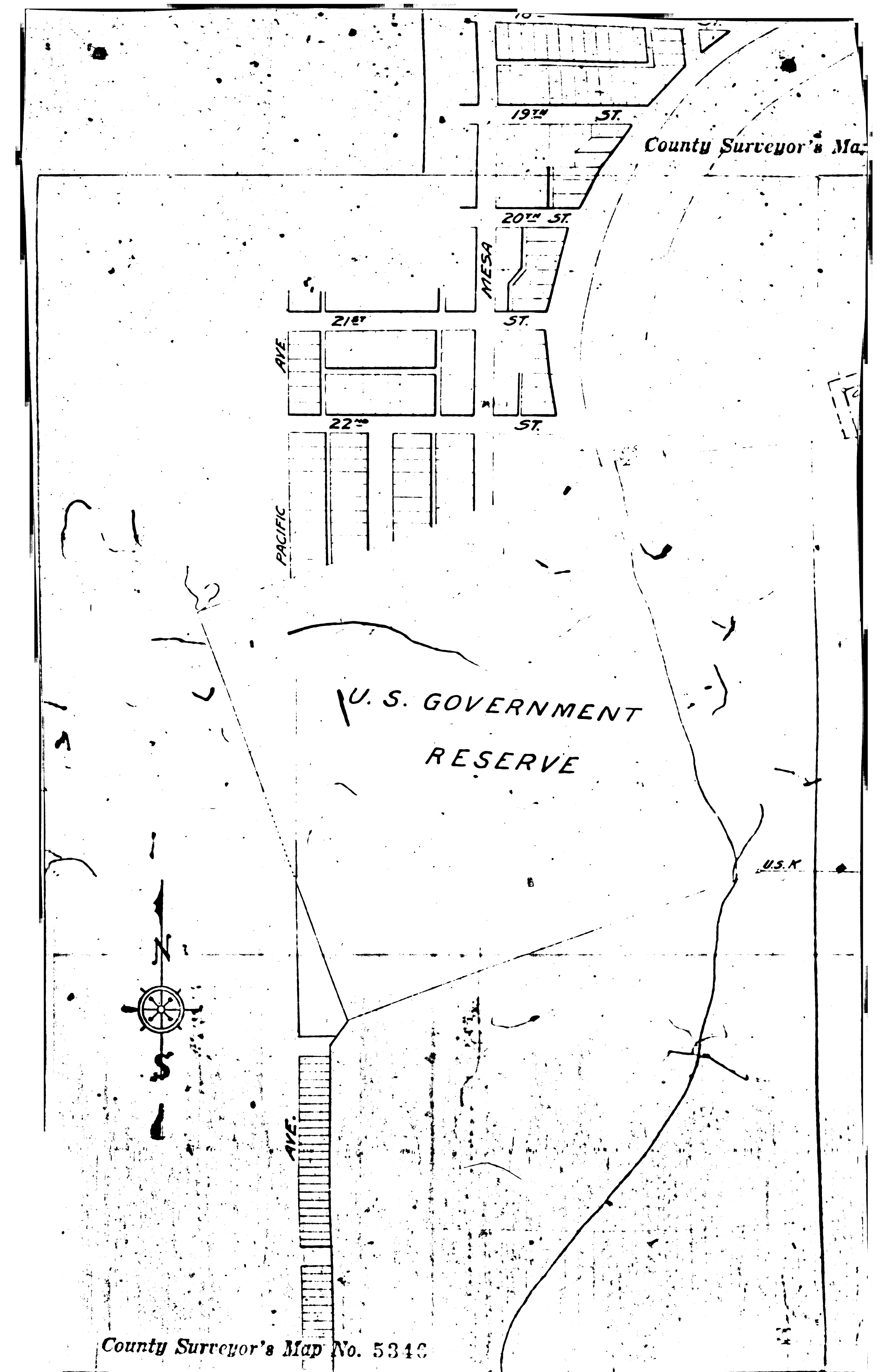
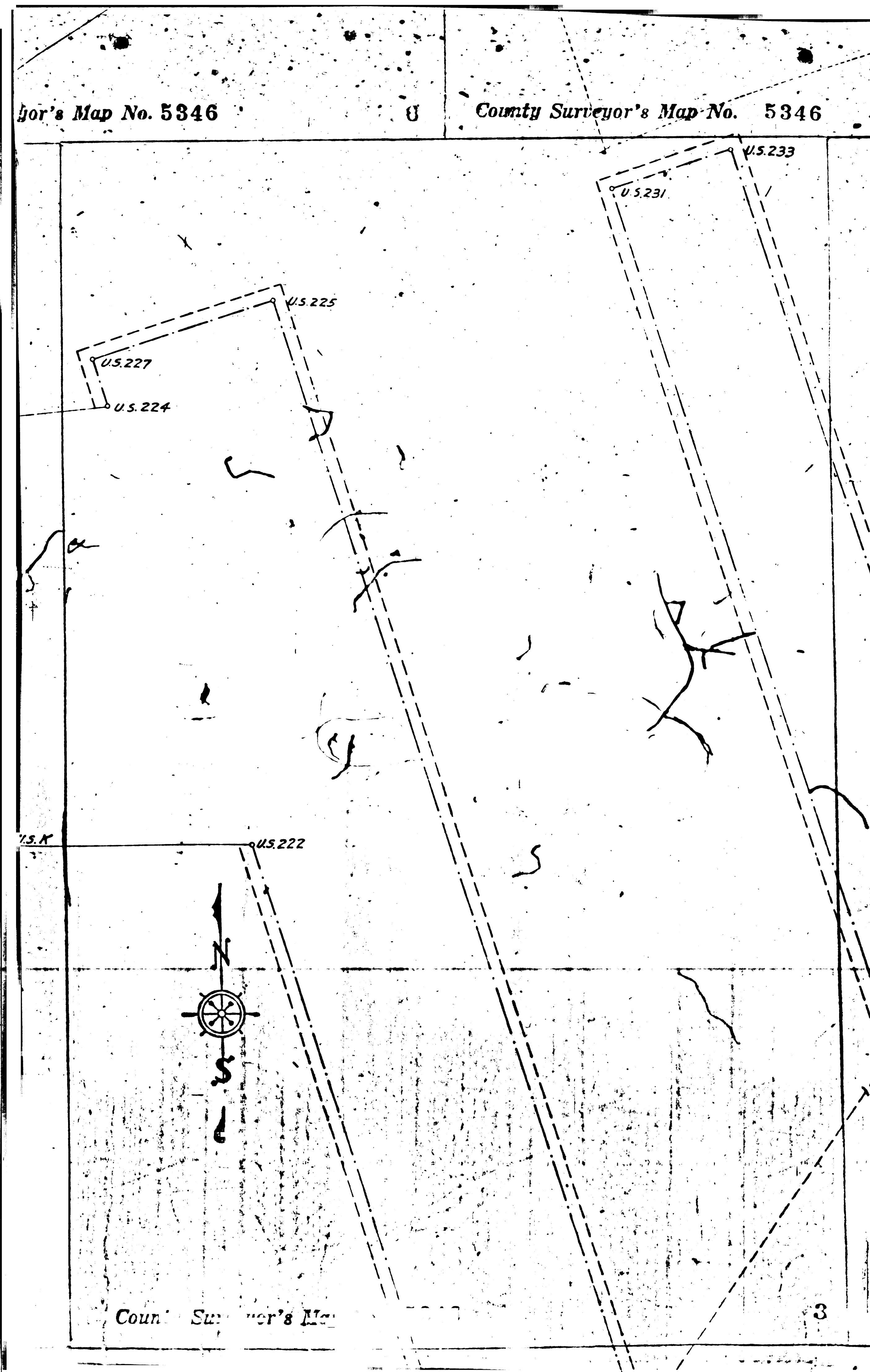
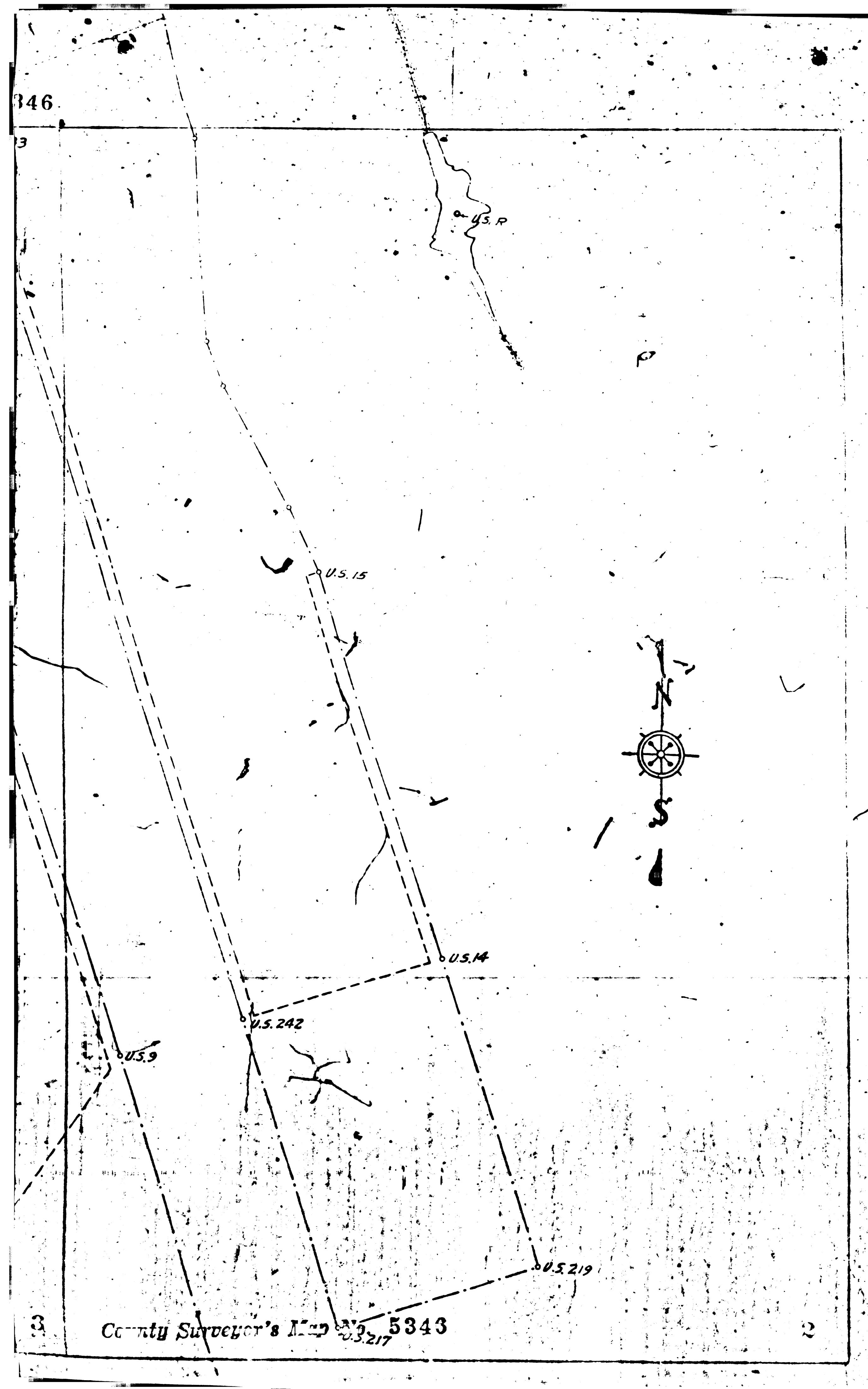
Scale 1 Inch Equals 300 Feet.

MAP No 7006

Index see C 55344

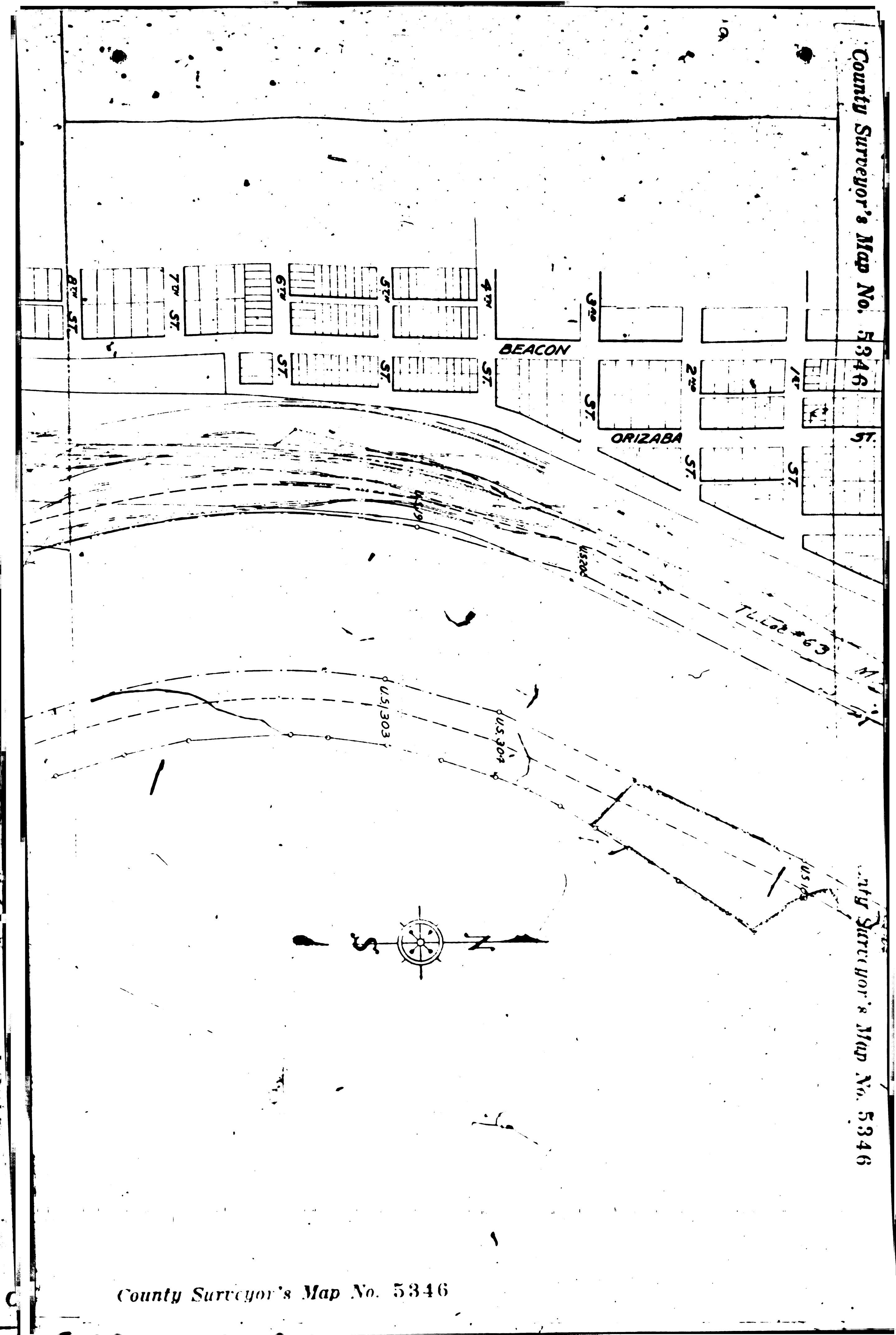
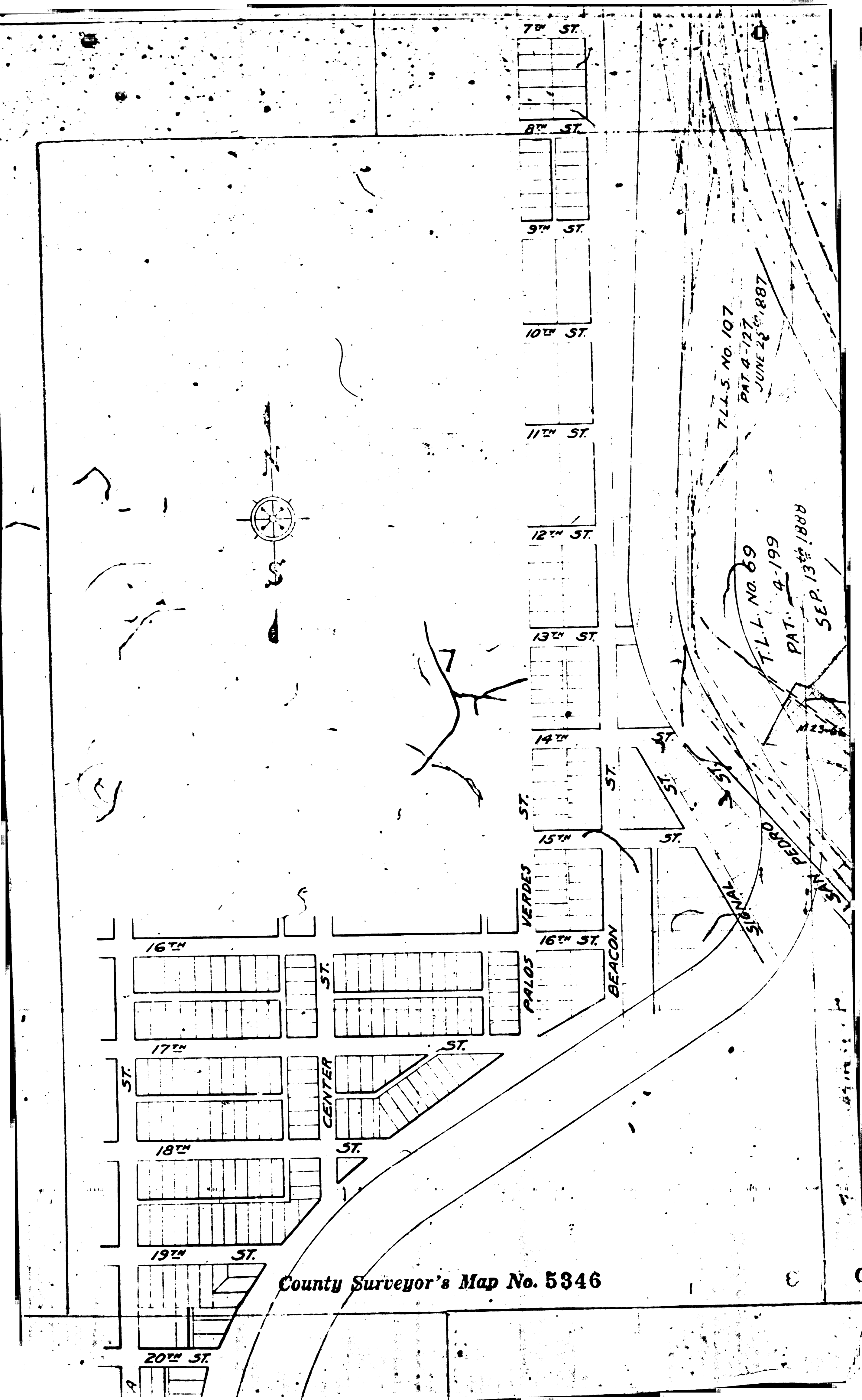
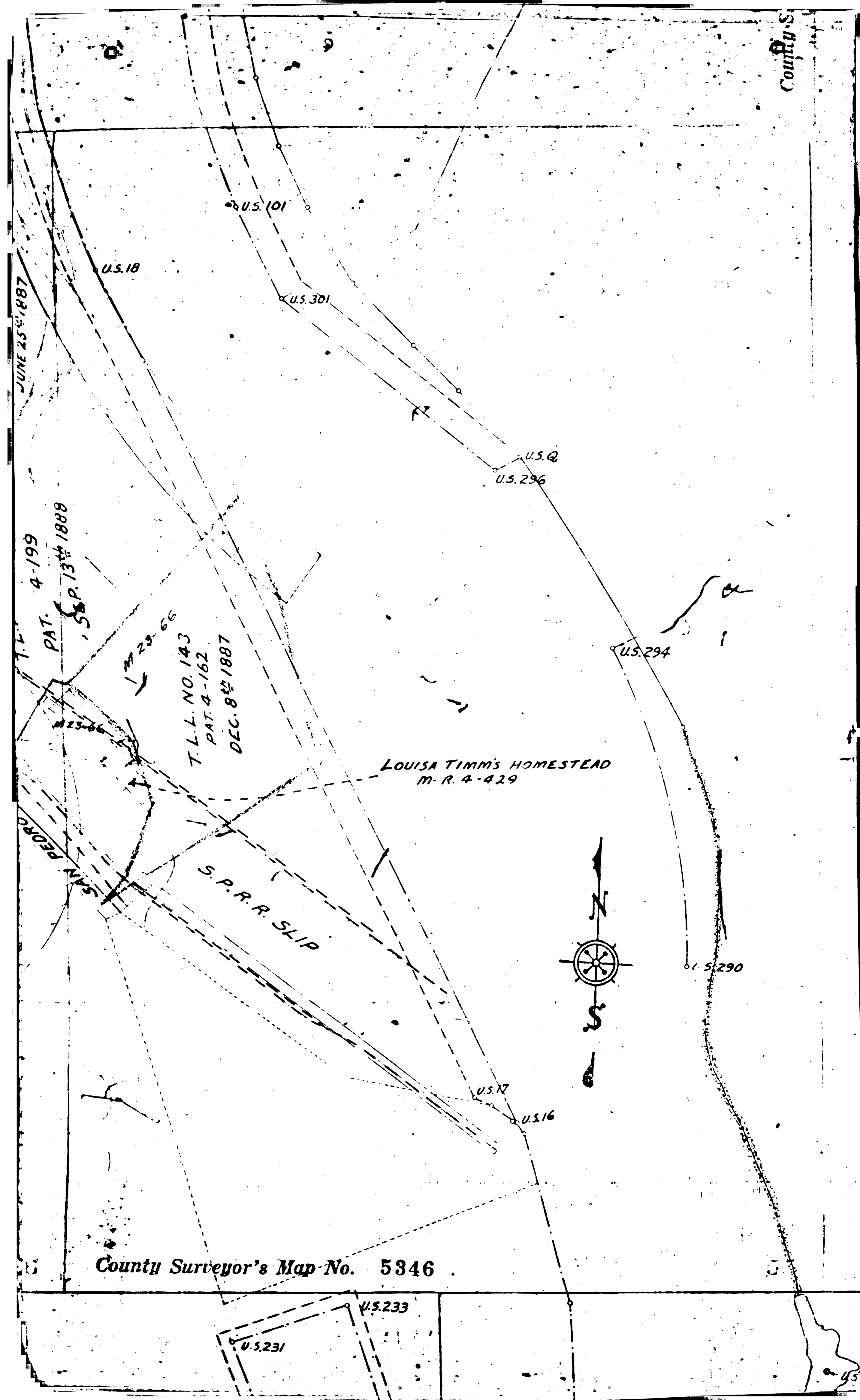
FM. 153416

A1 OF A7



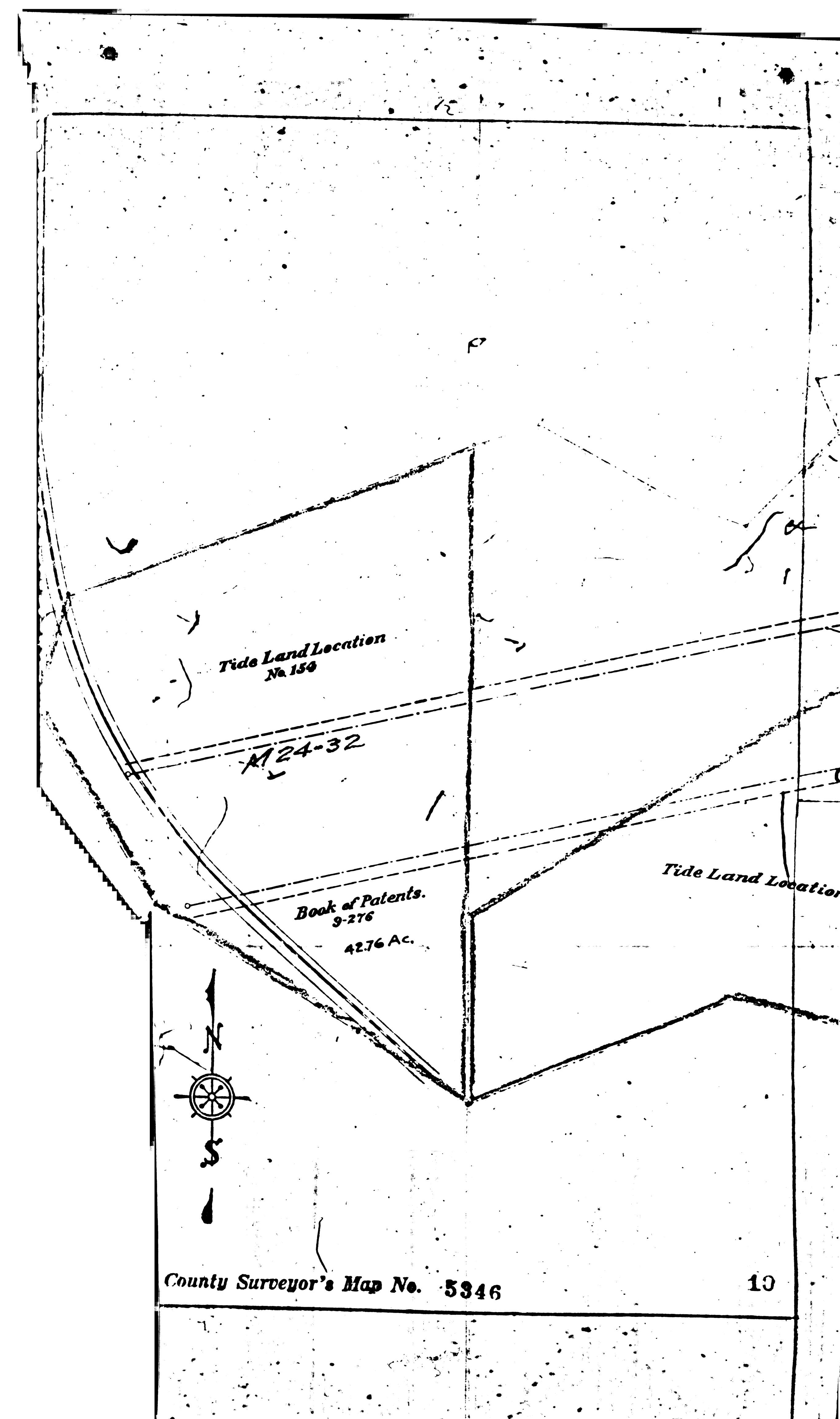
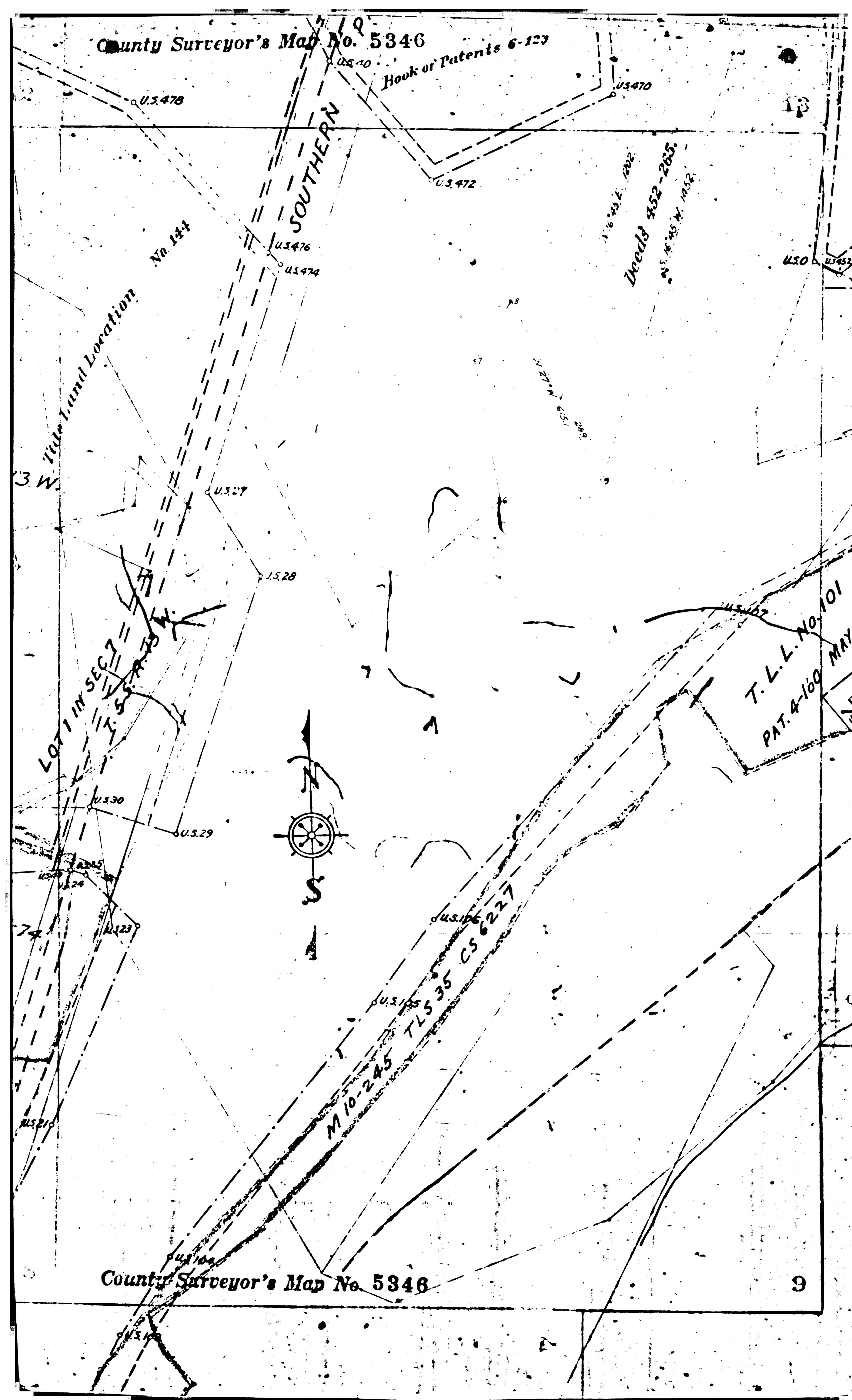
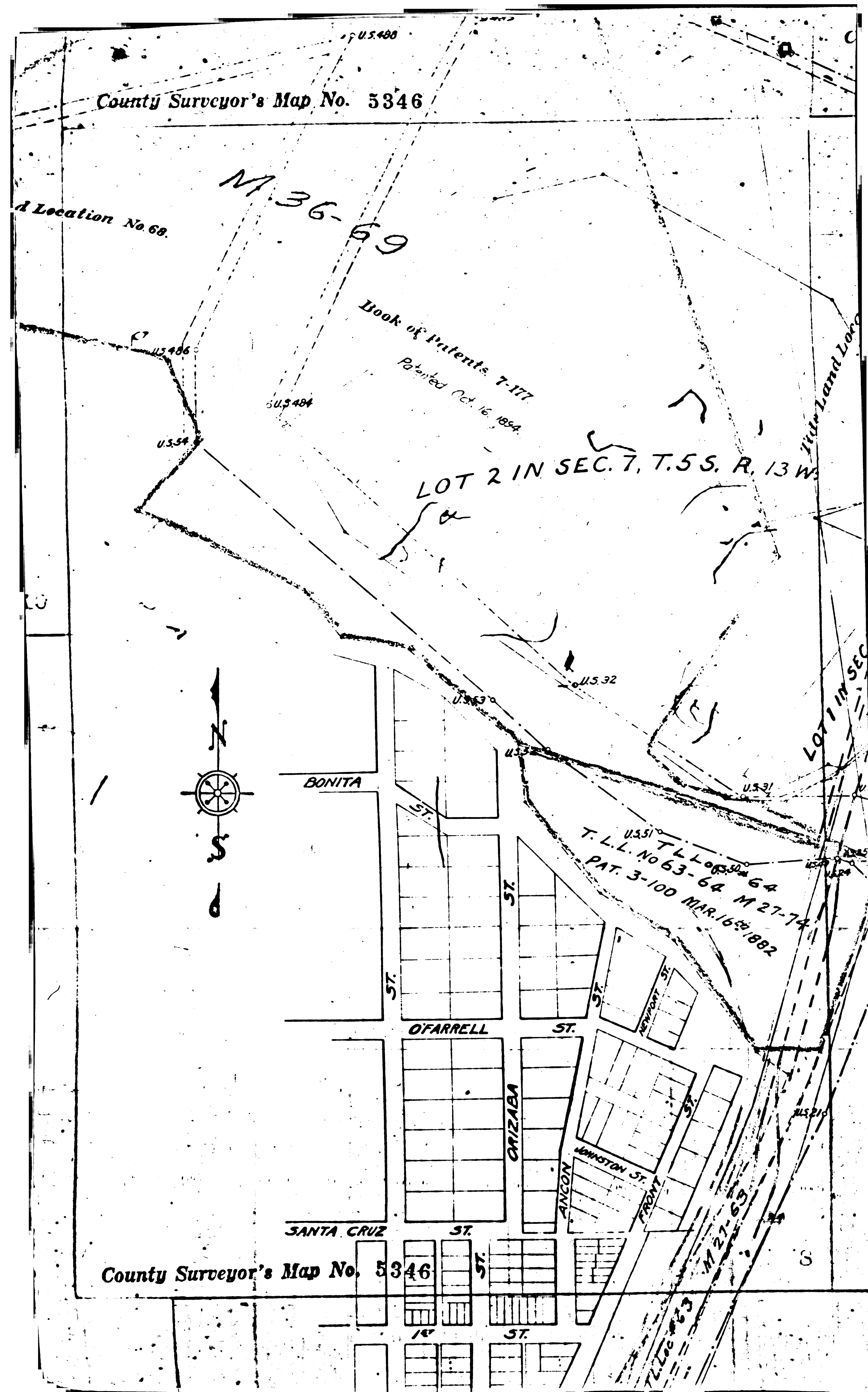
FM 15346

A 2 OF A 7



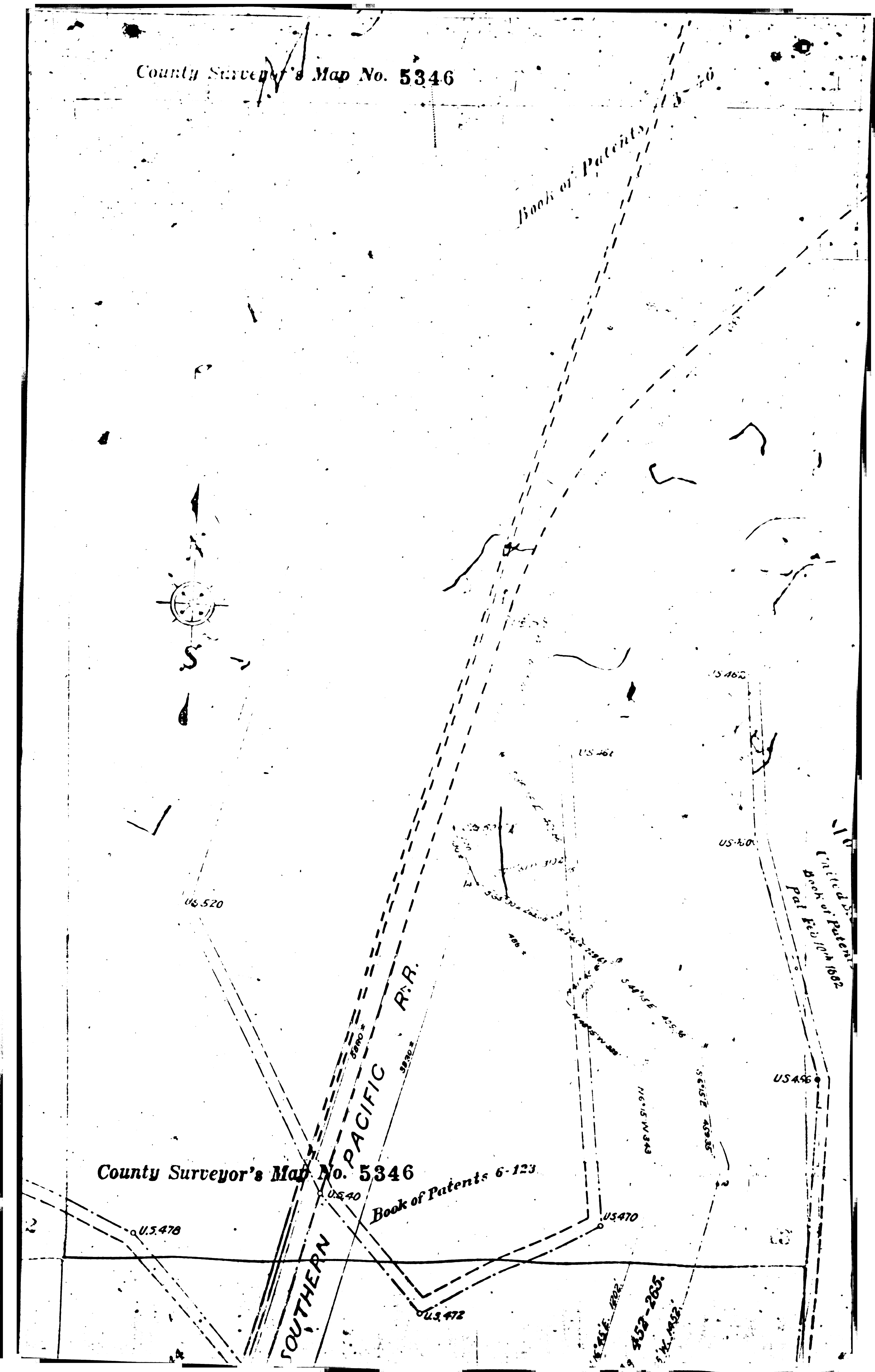
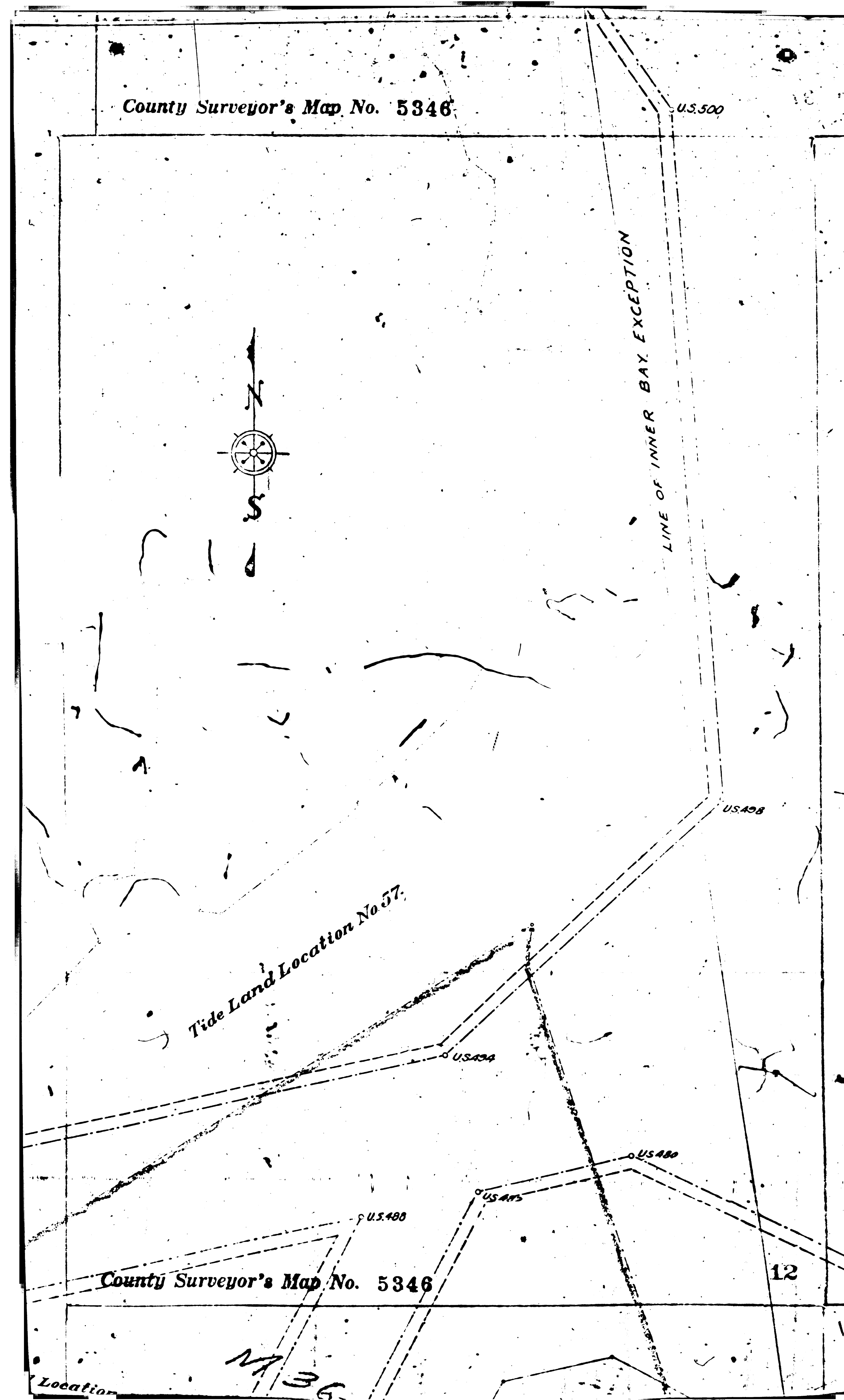
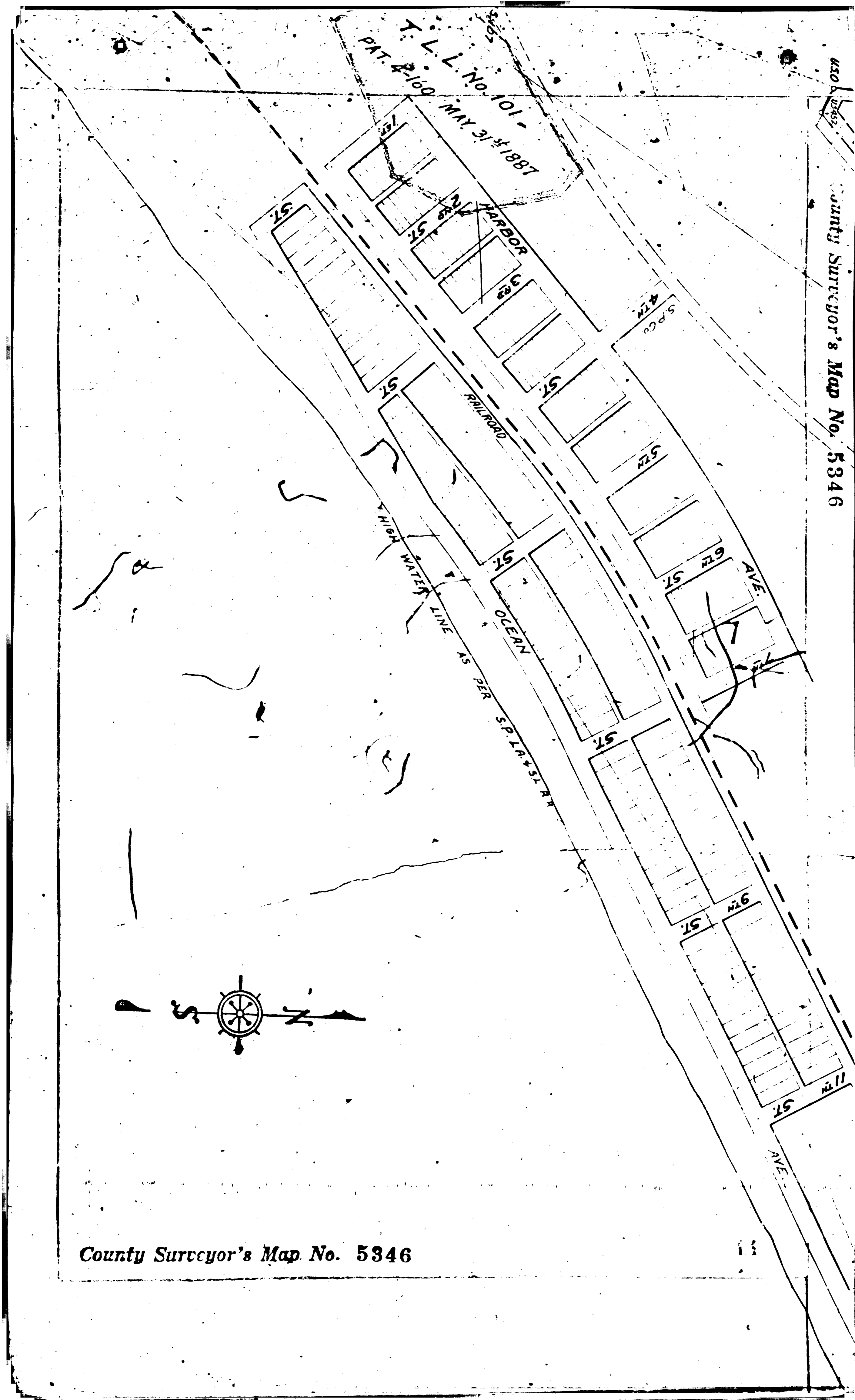
11 5 3 4 6

3 0 7 7



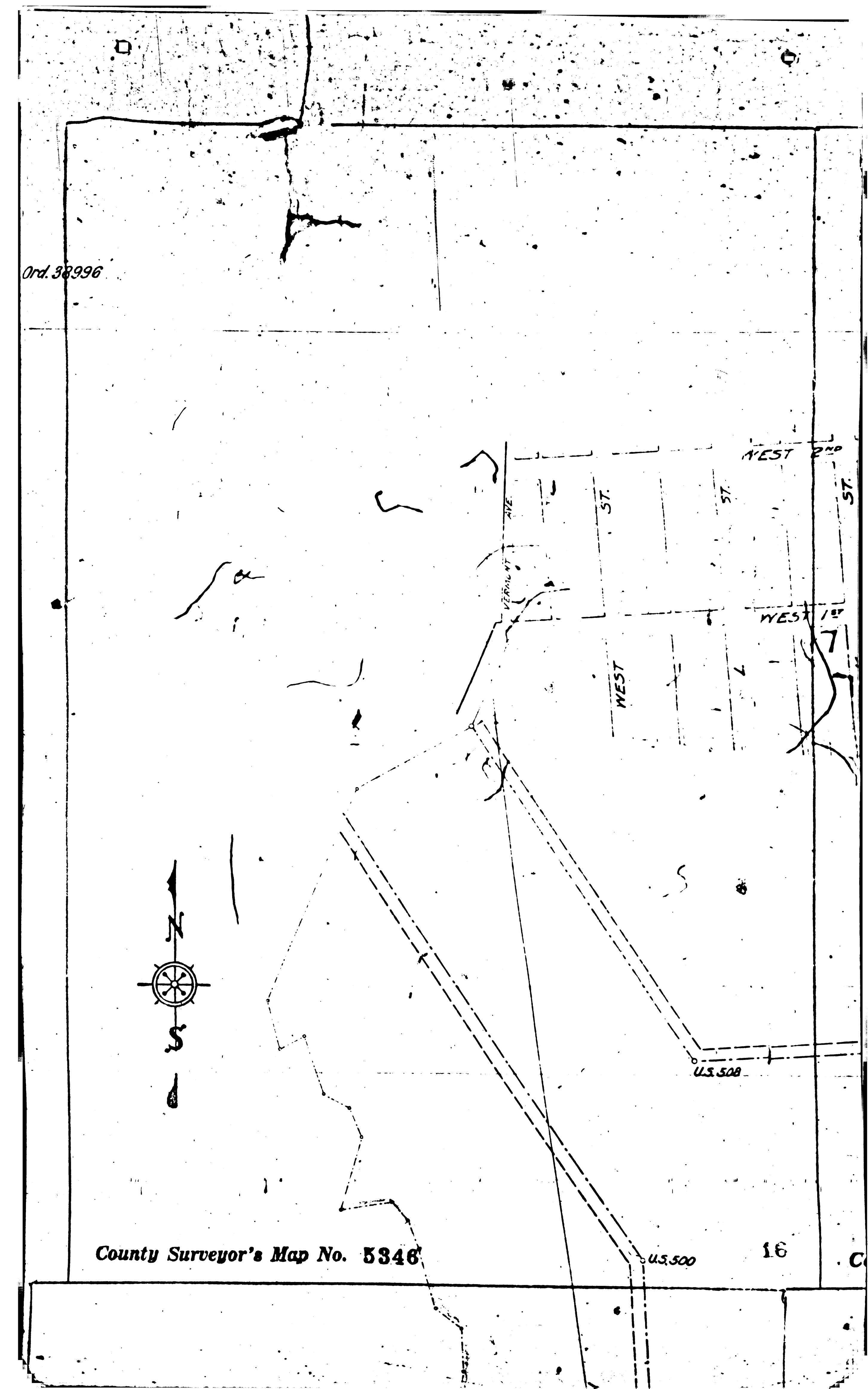
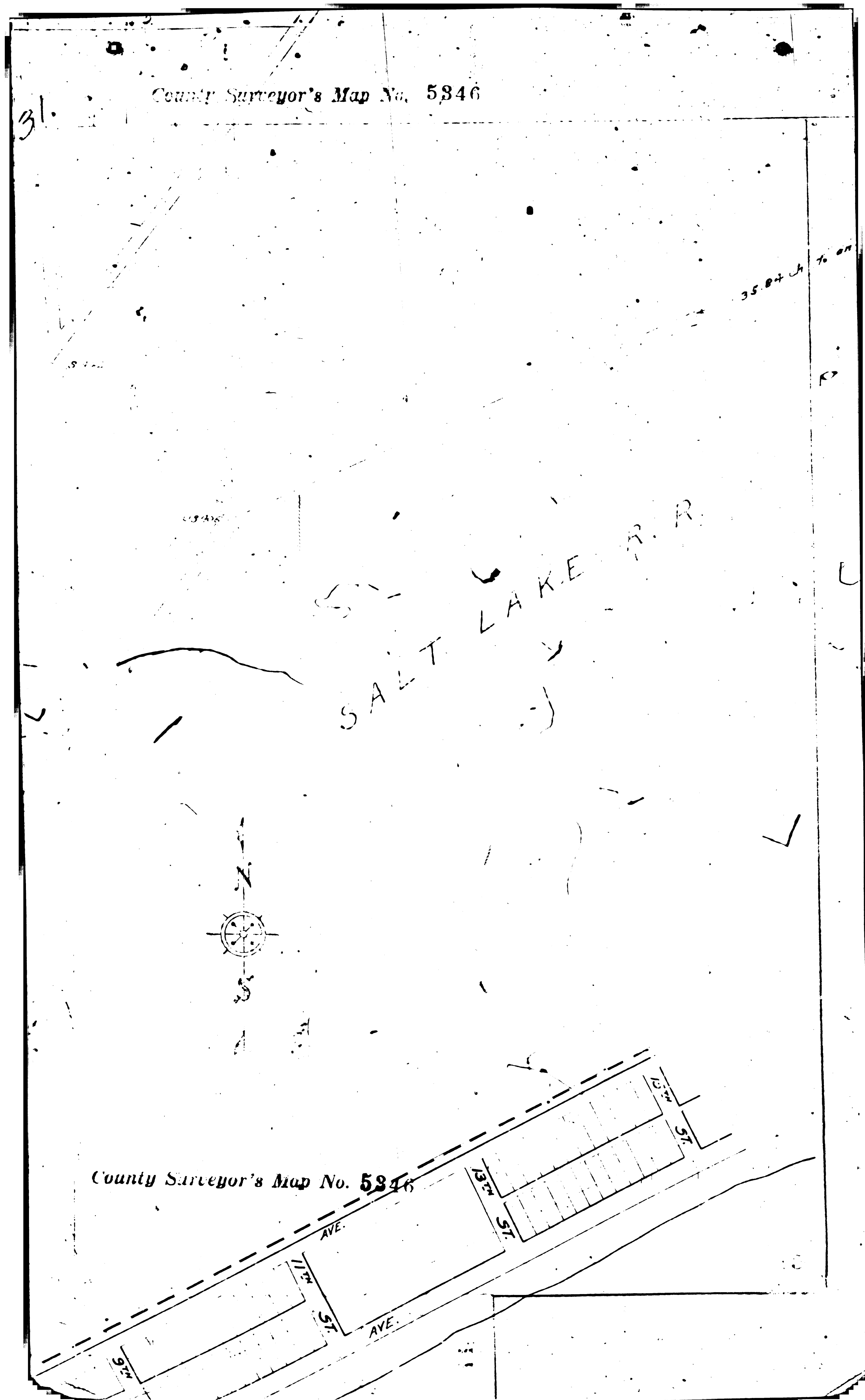
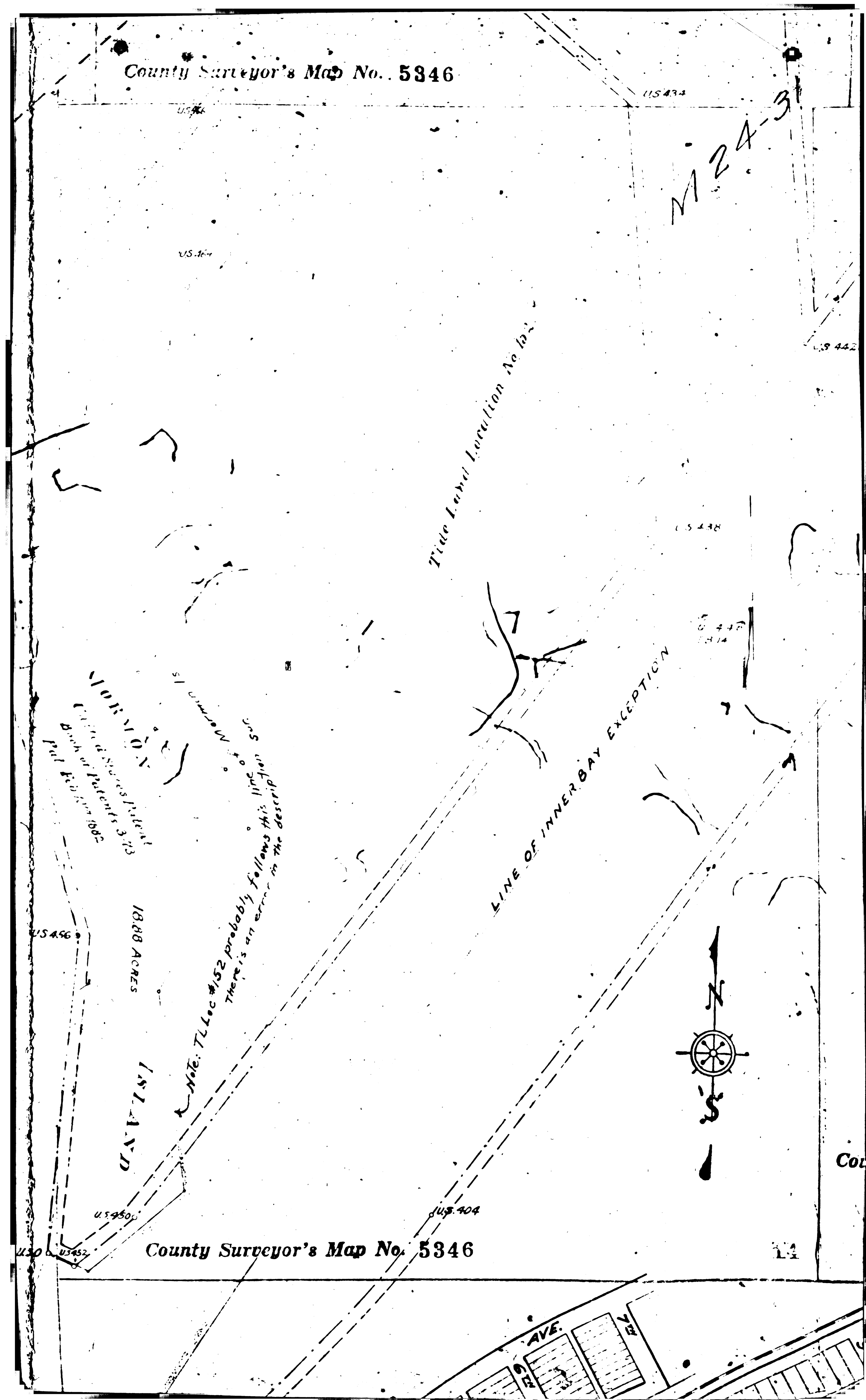
FILED IN 5 B 4 6

4 4 OF 4 7



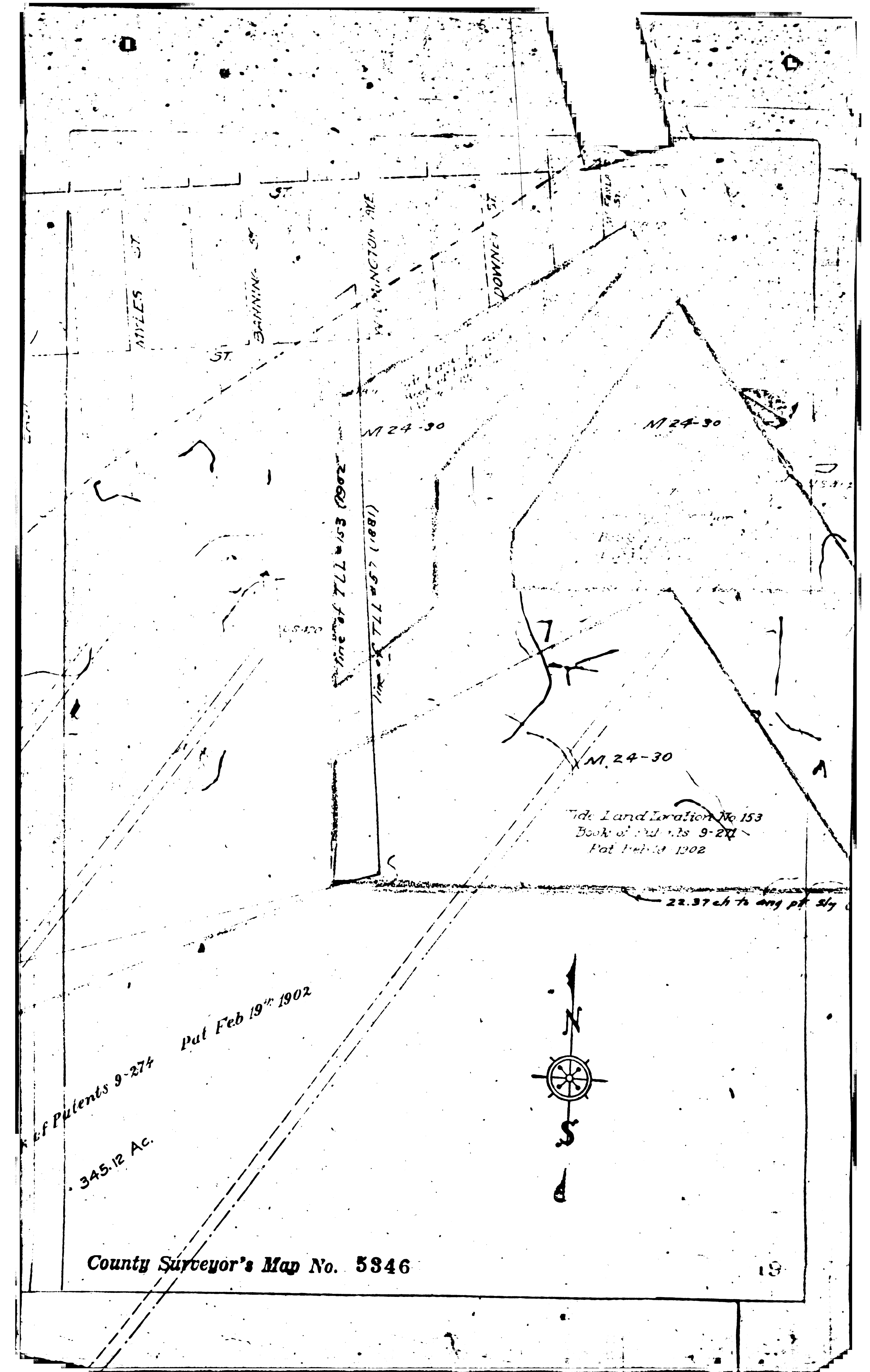
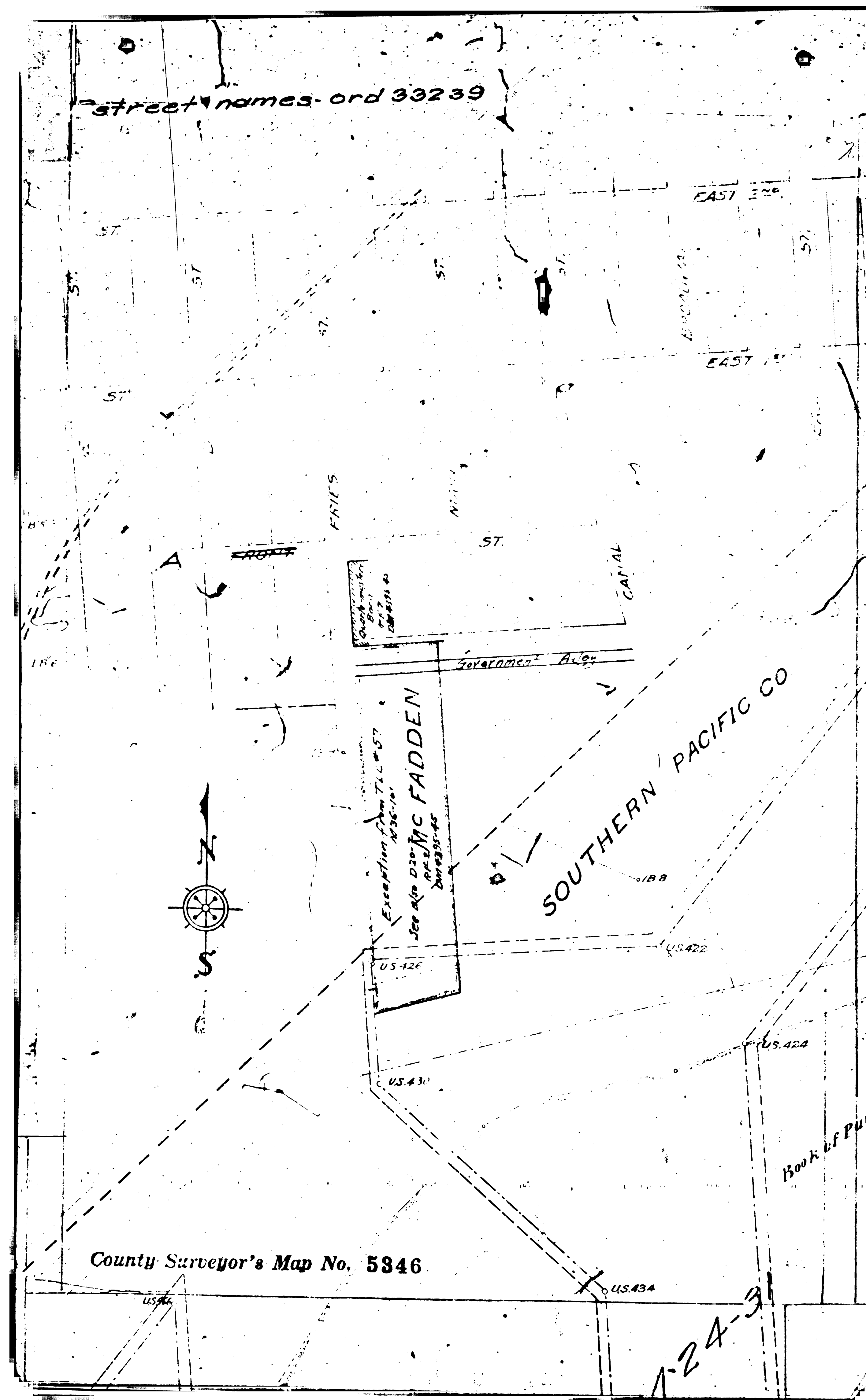
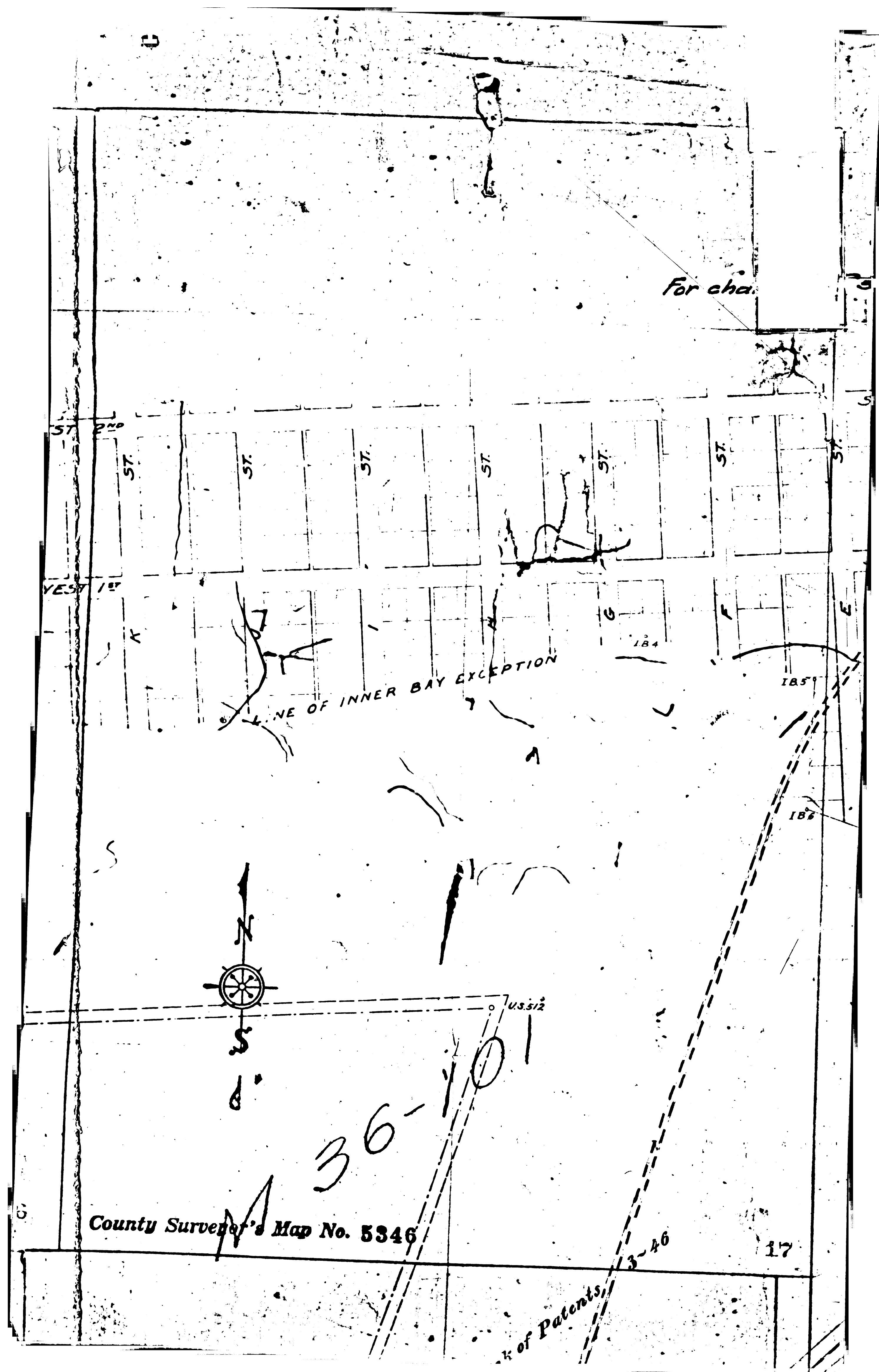
F M 1 5 3 4 6

A 5 O F A 7



F/M 11 5 3 4 6

A 6 O P A 7



FM 11 5 31 6

A 7 O A 7