

F.M. 15355
A1 OF A3

Location of Sta. S.F. 43 according to various Patent Calls.
Scale 1"=1000'

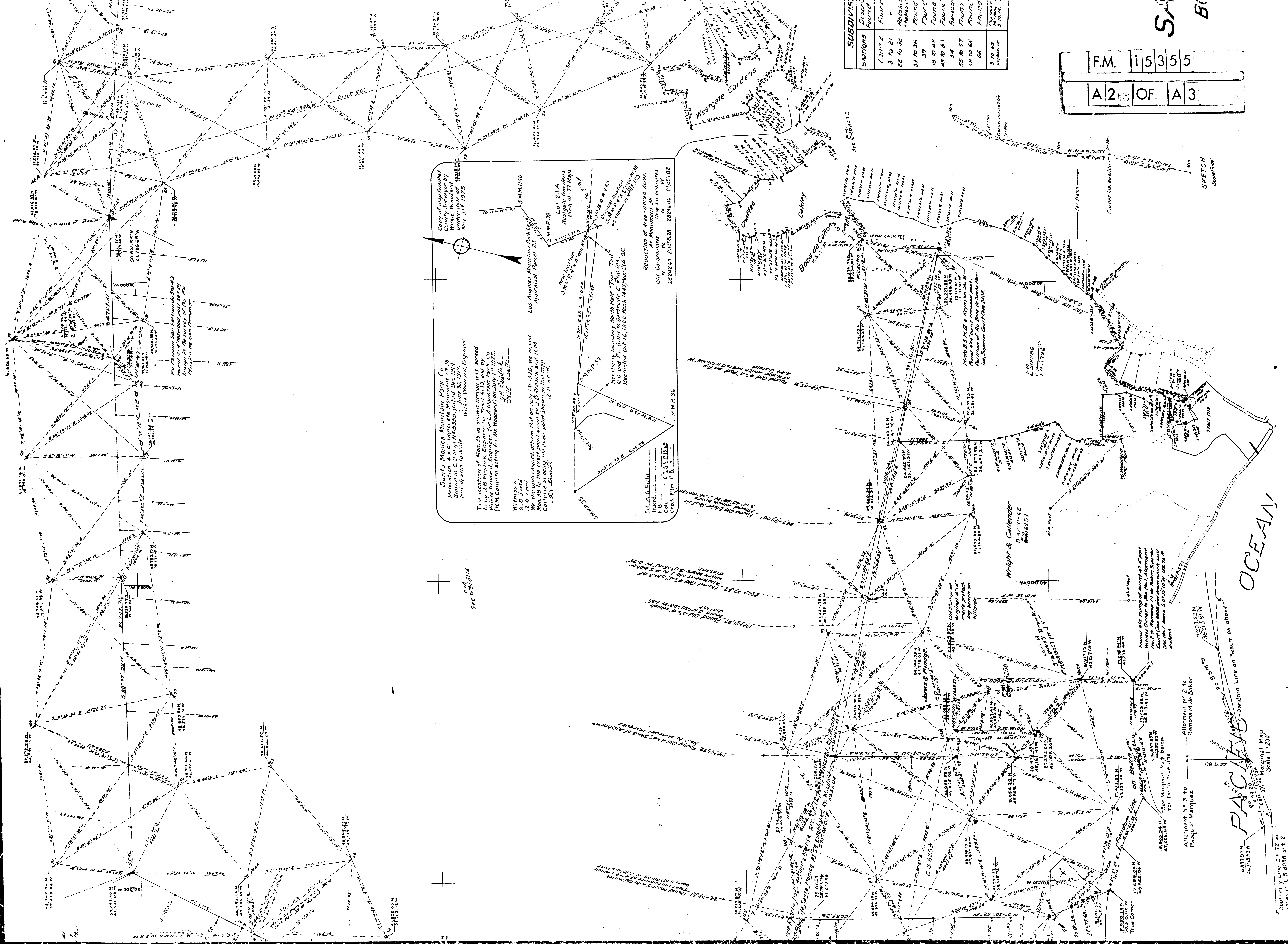
Plot showing Location Pascual Marquez Tract

| Station | Bearing | Distance |
|---------|-----------------|----------|
| 1 | S 87° 45' 30" E | 50.00 |
| 2 | S 87° 45' 30" E | 50.00 |
| 3 | S 87° 45' 30" E | 50.00 |
| 4 | S 87° 45' 30" E | 50.00 |
| 5 | S 87° 45' 30" E | 50.00 |
| 6 | S 87° 45' 30" E | 50.00 |
| 7 | S 87° 45' 30" E | 50.00 |
| 8 | S 87° 45' 30" E | 50.00 |
| 9 | S 87° 45' 30" E | 50.00 |
| 10 | S 87° 45' 30" E | 50.00 |
| 11 | S 87° 45' 30" E | 50.00 |
| 12 | S 87° 45' 30" E | 50.00 |
| 13 | S 87° 45' 30" E | 50.00 |
| 14 | S 87° 45' 30" E | 50.00 |
| 15 | S 87° 45' 30" E | 50.00 |
| 16 | S 87° 45' 30" E | 50.00 |
| 17 | S 87° 45' 30" E | 50.00 |
| 18 | S 87° 45' 30" E | 50.00 |
| 19 | S 87° 45' 30" E | 50.00 |
| 20 | S 87° 45' 30" E | 50.00 |

See S. 16d. No. 3 to Pascual Marquez, Superior Court Case 4405.
Scale 1"=200'

South of Line C.F. 72 as shown on S 8036 sht. 2
Marginal Map Scale 1"=200'

| Subdiv. Stations | Dist. Found | Found |
|------------------|-------------|-------|
| 1 to 2 | 3 10 21 | Found |
| 2 to 3 | 22 10 32 | Found |
| 3 to 4 | 33 10 36 | Found |
| 4 to 5 | 38 10 48 | Found |
| 5 to 6 | 49 10 53 | Found |
| 6 to 7 | 55 10 57 | Found |
| 7 to 8 | 58 10 65 | Found |
| 8 to 9 | 59 10 65 | Found |
| 9 to 10 | 59 10 65 | Found |
| 10 to 11 | 59 10 65 | Found |
| 11 to 12 | 59 10 65 | Found |
| 12 to 13 | 59 10 65 | Found |
| 13 to 14 | 59 10 65 | Found |
| 14 to 15 | 59 10 65 | Found |
| 15 to 16 | 59 10 65 | Found |
| 16 to 17 | 59 10 65 | Found |
| 17 to 18 | 59 10 65 | Found |
| 18 to 19 | 59 10 65 | Found |
| 19 to 20 | 59 10 65 | Found |
| 20 to 21 | 59 10 65 | Found |
| 21 to 22 | 59 10 65 | Found |
| 22 to 23 | 59 10 65 | Found |
| 23 to 24 | 59 10 65 | Found |
| 24 to 25 | 59 10 65 | Found |
| 25 to 26 | 59 10 65 | Found |
| 26 to 27 | 59 10 65 | Found |
| 27 to 28 | 59 10 65 | Found |
| 28 to 29 | 59 10 65 | Found |
| 29 to 30 | 59 10 65 | Found |
| 30 to 31 | 59 10 65 | Found |
| 31 to 32 | 59 10 65 | Found |
| 32 to 33 | 59 10 65 | Found |
| 33 to 34 | 59 10 65 | Found |
| 34 to 35 | 59 10 65 | Found |
| 35 to 36 | 59 10 65 | Found |
| 36 to 37 | 59 10 65 | Found |
| 37 to 38 | 59 10 65 | Found |
| 38 to 39 | 59 10 65 | Found |
| 39 to 40 | 59 10 65 | Found |
| 40 to 41 | 59 10 65 | Found |
| 41 to 42 | 59 10 65 | Found |
| 42 to 43 | 59 10 65 | Found |
| 43 to 44 | 59 10 65 | Found |
| 44 to 45 | 59 10 65 | Found |
| 45 to 46 | 59 10 65 | Found |
| 46 to 47 | 59 10 65 | Found |
| 47 to 48 | 59 10 65 | Found |
| 48 to 49 | 59 10 65 | Found |
| 49 to 50 | 59 10 65 | Found |
| 50 to 51 | 59 10 65 | Found |
| 51 to 52 | 59 10 65 | Found |
| 52 to 53 | 59 10 65 | Found |
| 53 to 54 | 59 10 65 | Found |
| 54 to 55 | 59 10 65 | Found |
| 55 to 56 | 59 10 65 | Found |
| 56 to 57 | 59 10 65 | Found |
| 57 to 58 | 59 10 65 | Found |
| 58 to 59 | 59 10 65 | Found |
| 59 to 60 | 59 10 65 | Found |
| 60 to 61 | 59 10 65 | Found |
| 61 to 62 | 59 10 65 | Found |
| 62 to 63 | 59 10 65 | Found |
| 63 to 64 | 59 10 65 | Found |
| 64 to 65 | 59 10 65 | Found |
| 65 to 66 | 59 10 65 | Found |
| 66 to 67 | 59 10 65 | Found |
| 67 to 68 | 59 10 65 | Found |
| 68 to 69 | 59 10 65 | Found |
| 69 to 70 | 59 10 65 | Found |
| 70 to 71 | 59 10 65 | Found |
| 71 to 72 | 59 10 65 | Found |
| 72 to 73 | 59 10 65 | Found |
| 73 to 74 | 59 10 65 | Found |
| 74 to 75 | 59 10 65 | Found |
| 75 to 76 | 59 10 65 | Found |
| 76 to 77 | 59 10 65 | Found |
| 77 to 78 | 59 10 65 | Found |
| 78 to 79 | 59 10 65 | Found |
| 79 to 80 | 59 10 65 | Found |
| 80 to 81 | 59 10 65 | Found |
| 81 to 82 | 59 10 65 | Found |
| 82 to 83 | 59 10 65 | Found |
| 83 to 84 | 59 10 65 | Found |
| 84 to 85 | 59 10 65 | Found |
| 85 to 86 | 59 10 65 | Found |
| 86 to 87 | 59 10 65 | Found |
| 87 to 88 | 59 10 65 | Found |
| 88 to 89 | 59 10 65 | Found |
| 89 to 90 | 59 10 65 | Found |
| 90 to 91 | 59 10 65 | Found |
| 91 to 92 | 59 10 65 | Found |
| 92 to 93 | 59 10 65 | Found |
| 93 to 94 | 59 10 65 | Found |
| 94 to 95 | 59 10 65 | Found |
| 95 to 96 | 59 10 65 | Found |
| 96 to 97 | 59 10 65 | Found |
| 97 to 98 | 59 10 65 | Found |
| 98 to 99 | 59 10 65 | Found |
| 99 to 100 | 59 10 65 | Found |



Copy of map furnished by Santa Monica Mountain Park Co. under date of Nov 31 1925

Santa Monica Mountain Park Co.
Relocation 4 x 4 Concrete Monument in 36
Shown in C.S. Map 153555, parcel 30, 1925
Not drawn to scale
W. W. Woodard, Engineer

The location of Mon. 36 as shown herein was agreed to by J.B. Reddick, Engineer, Santa Monica Mountain Park Co. and J.B. Reddick, Engineer, Los Angeles Mountain Park Co. on July 1, 1925. (The latter acting for the Woodard) on July 1, 1925. Collette as being the exact point shown on the map.

Witnesses:
J. B. Reddick
J. B. Reddick

We, the undersigned, affirm that on July 1, 1925, we moved Mon. 36 to the exact point given by J.B. Reddick and J.M. Collette as being the exact point shown on the map.

Witnesses:
J. B. Reddick
J. B. Reddick

Los Angeles Mountain Park Co.
Appraisal Parcel 23
S.M.P. 39
Lot 23 A
Westgate Gardens
Block 10-77 Maps
New location
S.M.P. 4 x 4
N. 72° 58' 45" E. 530.04
S.M.P. 4 x 4
N. 71° 22' 55" E. 357.78
Northern boundary North Half "Tiger Tail"
S.M.P. 4 x 4
Recorded Oct 16, 1922 Book 1448 Page 364 O.R.

Reduction of Area = 0.0264 Acres.
At Monument 36
Old Coordinates New Coordinates
28242.63 21855.28 28242.06 23051.82

D. A. G. Field
Traced
P.B.
Calc. C. S. 9253
Check Fig. P. B.

SKETCH Scale 1/100

OCEAN

PACIFIC PACIFIC

16837.55N
46355.53W
Southern Line CF 72 2
Shown on C.S. 6036 Sh. 2

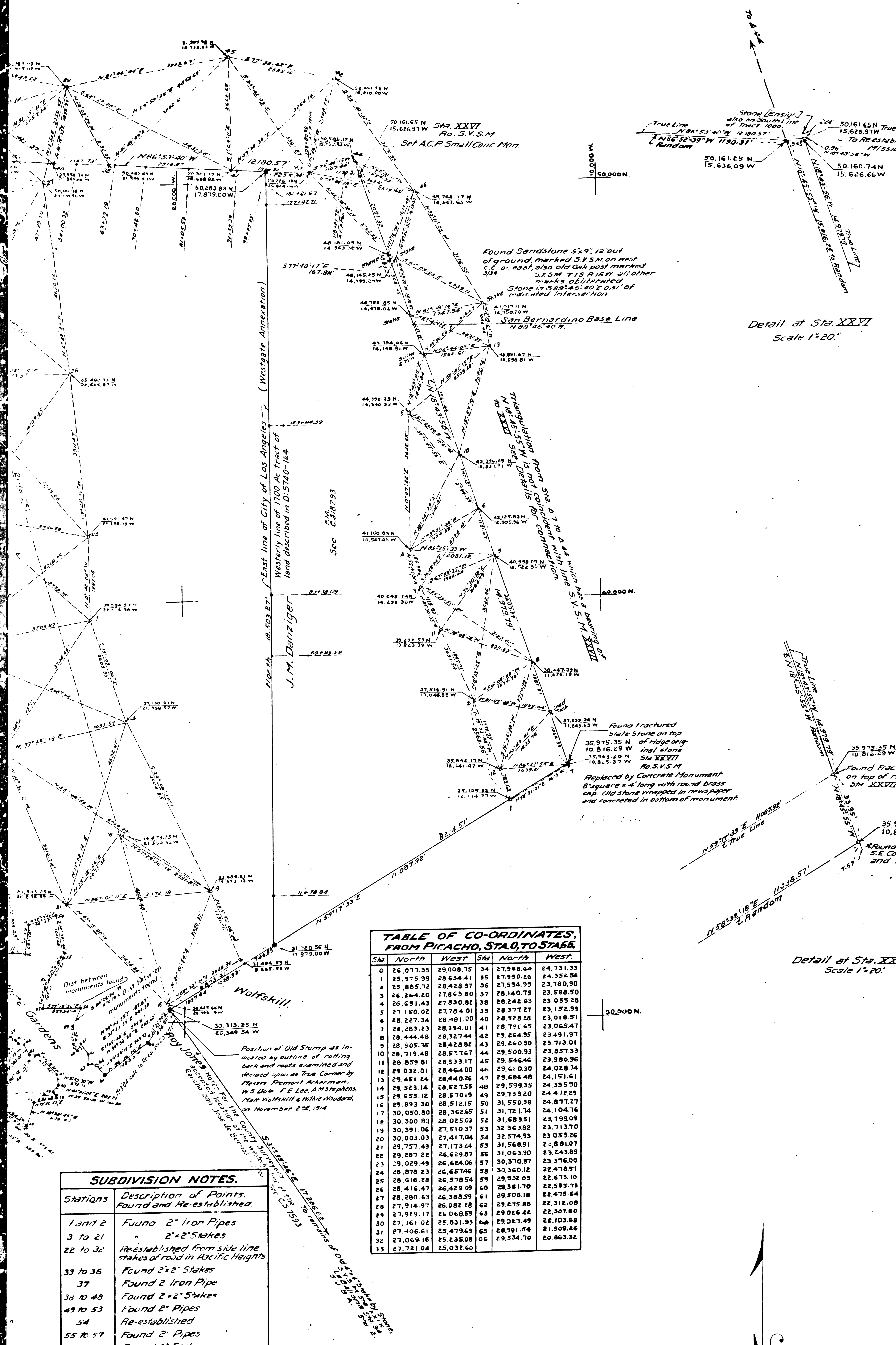


TABLE OF AREAS

| Description | ACREAGE | |
|---|------------------|-----------|
| | Additive | Deductive |
| Rancho San Vicente | 21632.2886 | |
| Reynolds, Leaflet (Lots 2 & 3 Tract No. 1095) | 46.9897 | |
| Whitworth Ranch (Allot No. 5 to P. Marquez, E. part of Allot No. 2 to R. H. and B. B. (Tract from Santa Monica Canyon, Subdiv. to R. San Vicente and B. B. as Canyon Subdiv. from E. R. M. & M. Canyon to W. & C. Purchase) | 1895.3680 | |
| Danziger, Beverly Glen & Bargh (Sale to Smith) | 960.4876 | |
| Olney Sale | 2404.1249 | 1860.0000 |
| Pascual Marquez (Sentiments Canyon) | | 56.1303 |
| P. Marquez Lot 4 | | 7.9482 |
| County Beach Road thro P. Marquez Lot | 0.002 | 0.002 |
| Deed for County Beach Road | 0.002 | 0.002 |
| S. P. Tract | 19.902 | 1962.811 |
| County Beach Road thro S. P. Tract | 1.481 | 18.421 |
| NET TOTAL (Acres) | 22078.322 | |

TABLE OF CO-ORDINATES, FROM PITCHO, STA. 0 TO STA. 66

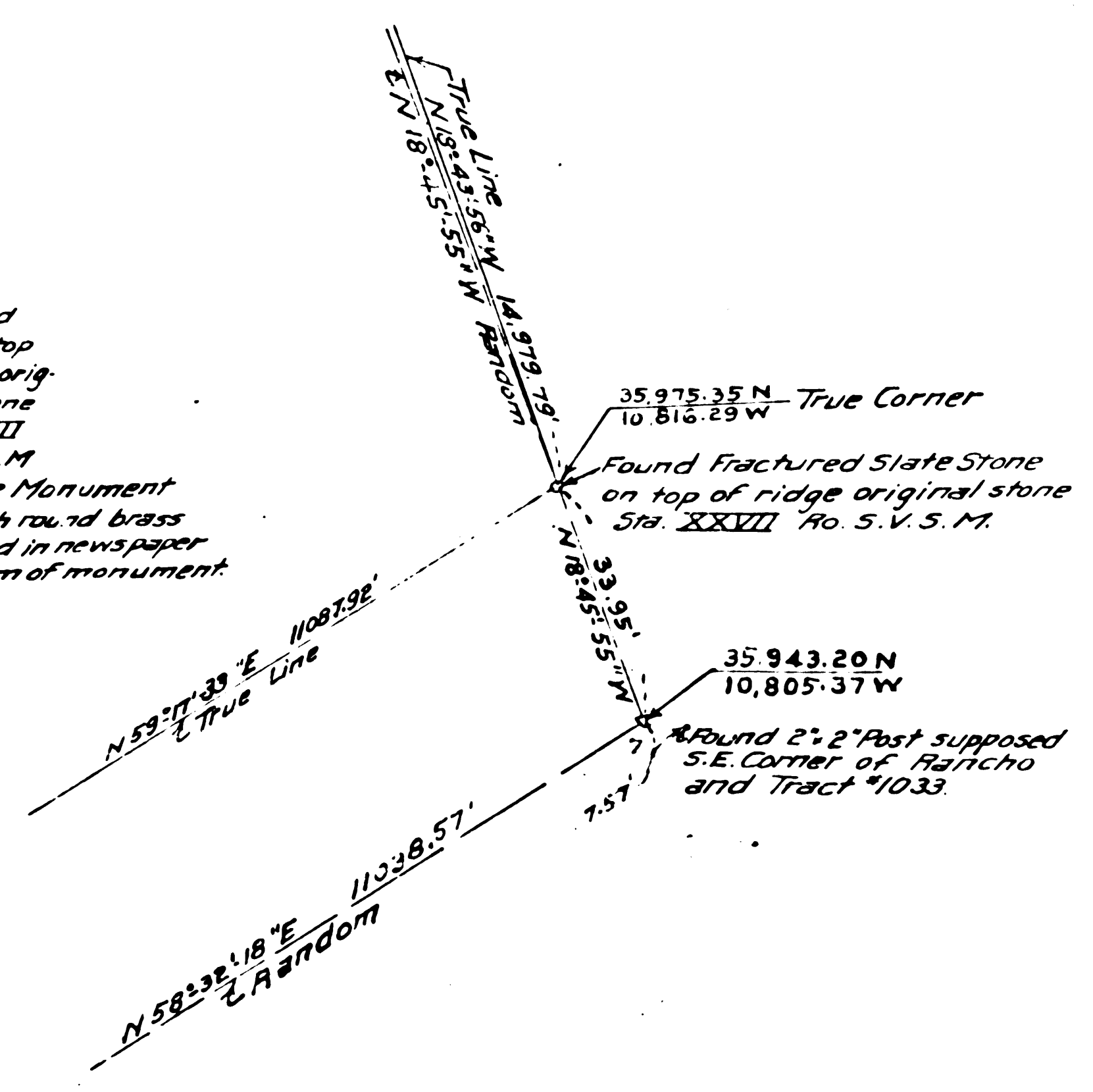
| Sta | North | West | Sta | North | West |
|-----|-----------|-----------|-----|-----------|-----------|
| 0 | 26,077.35 | 29,008.75 | 34 | 27,568.64 | 24,731.33 |
| 1 | 25,975.99 | 28,634.41 | 35 | 27,990.66 | 24,352.26 |
| 2 | 25,885.70 | 28,428.97 | 36 | 27,594.99 | 23,900.50 |
| 3 | 26,264.20 | 27,863.80 | 37 | 28,140.79 | 23,598.50 |
| 4 | 26,691.43 | 27,830.82 | 38 | 28,242.63 | 23,055.28 |
| 5 | 27,150.02 | 27,784.01 | 39 | 28,377.27 | 23,152.99 |
| 6 | 28,227.34 | 28,481.00 | 40 | 28,928.28 | 23,018.91 |
| 7 | 28,283.23 | 28,394.01 | 41 | 28,791.65 | 23,065.47 |
| 8 | 28,444.48 | 28,327.44 | 42 | 29,264.95 | 23,491.97 |
| 9 | 28,505.36 | 28,428.82 | 43 | 29,260.90 | 23,713.01 |
| 10 | 28,719.48 | 28,571.67 | 44 | 29,500.93 | 23,857.33 |
| 11 | 28,859.81 | 28,533.17 | 45 | 29,546.46 | 23,880.96 |
| 12 | 29,032.01 | 28,464.00 | 46 | 29,610.30 | 24,028.74 |
| 13 | 29,491.64 | 28,440.26 | 47 | 29,686.48 | 24,151.61 |
| 14 | 29,523.14 | 28,527.55 | 48 | 29,599.55 | 24,335.90 |
| 15 | 29,655.12 | 28,570.19 | 49 | 29,733.20 | 24,472.29 |
| 16 | 29,893.30 | 28,512.15 | 50 | 31,550.38 | 24,877.27 |
| 17 | 30,050.80 | 28,362.65 | 51 | 31,721.74 | 24,104.76 |
| 18 | 30,300.89 | 28,025.09 | 52 | 31,483.51 | 23,799.09 |
| 19 | 30,391.06 | 27,910.37 | 53 | 32,363.82 | 23,713.70 |
| 20 | 30,003.03 | 27,417.04 | 54 | 32,574.93 | 23,059.26 |
| 21 | 29,757.49 | 27,173.44 | 55 | 31,568.91 | 22,881.07 |
| 22 | 29,287.22 | 26,629.87 | 56 | 31,063.90 | 23,043.89 |
| 23 | 29,029.49 | 26,624.06 | 57 | 30,370.87 | 23,376.00 |
| 24 | 28,818.23 | 26,657.16 | 58 | 30,360.12 | 22,478.91 |
| 25 | 28,618.28 | 26,378.54 | 59 | 29,932.09 | 22,673.10 |
| 26 | 28,416.47 | 26,429.09 | 60 | 29,361.70 | 22,585.73 |
| 27 | 28,280.63 | 26,388.59 | 61 | 29,806.18 | 22,478.64 |
| 28 | 27,914.97 | 26,082.88 | 62 | 29,275.88 | 22,311.08 |
| 29 | 27,929.17 | 26,068.99 | 63 | 29,016.44 | 22,307.80 |
| 30 | 27,161.02 | 25,931.93 | 64 | 29,027.49 | 22,103.68 |
| 31 | 27,406.61 | 25,479.69 | 65 | 28,791.54 | 21,908.86 |
| 32 | 27,069.16 | 25,235.08 | 66 | 29,534.70 | 20,863.32 |
| 33 | 27,721.04 | 25,032.60 | | | |

SUBDIVISION NOTES.

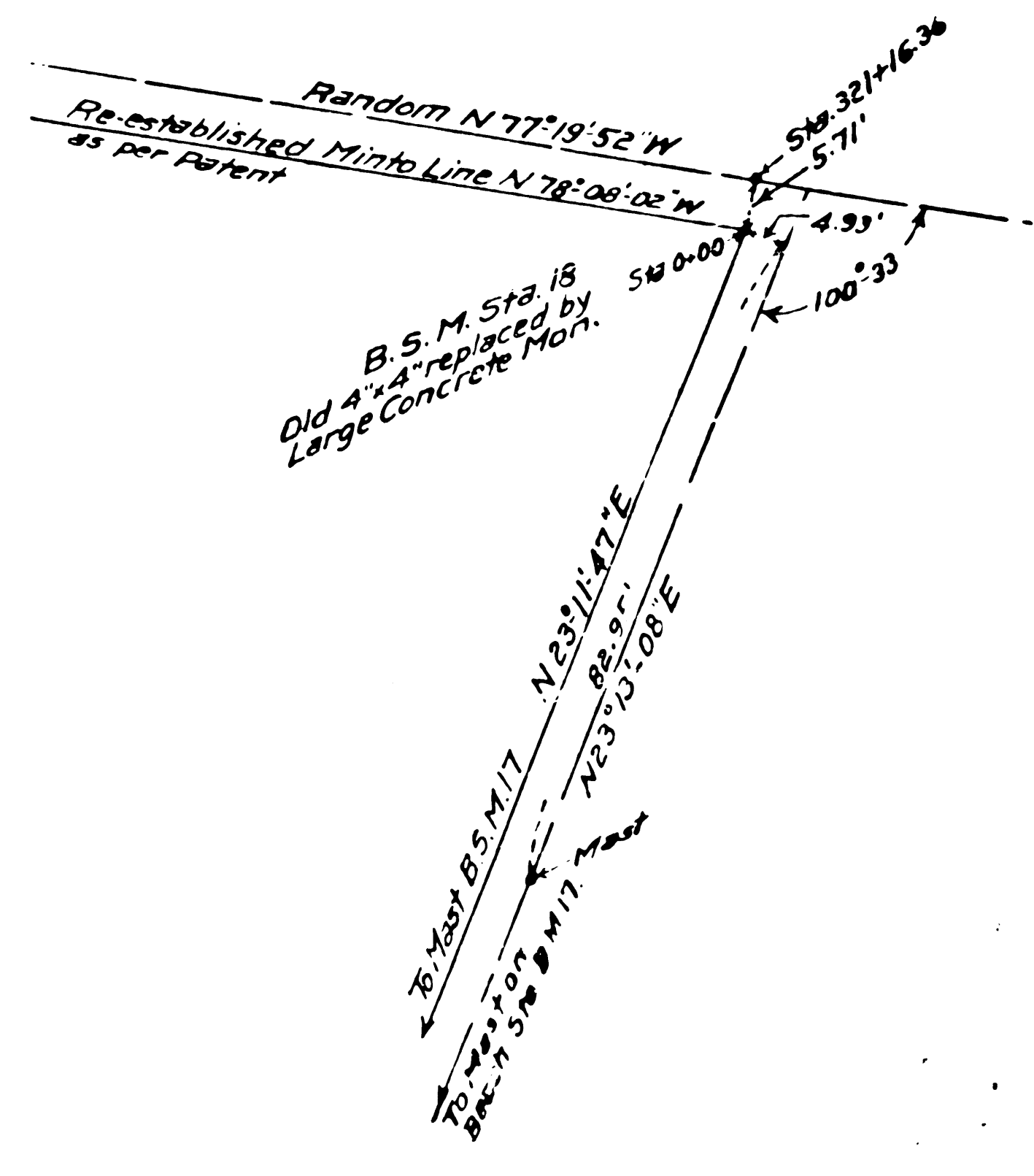
| Stations | Description of Points Found and Re-established. |
|-------------------|---|
| 1 and 2 | Found 2" Iron Pipes |
| 3 to 21 | 2" x 2" Stakes |
| 22 to 32 | Re-established from side line stakes of road in Pacific Heights |
| 33 to 36 | Found 2" x 2" Stakes |
| 37 | Found 2" Iron Pipe |
| 38 to 48 | Found 2" x 2" Stakes |
| 49 to 53 | Found 2" Pipes |
| 54 | Re-established |
| 55 to 57 | Found 2" Pipes |
| 58 to 65 | Found 2" Stakes |
| 66 | Found 6" Pipe |
| 3 to 65 inclusive | Replaced by 4" x 4" Concrete Monument 36" long with a 4" x 4" Brass Cap marked S. M. M. P. and centered with cross (+). |

NOTE.
 All numbered Triangulation Stations are 3" Pipe numbered and set 6" under surface with mound of stones around them.
 All numbers are stakes.
 All measurements made with 300' tested Luffkin tape and corrections made for tension and temperature.
 At all corners marked with a cross (+) a 4" square on top, 4" square on bottom and 4" long with brass pin 4" square marked S. M. M. P. and centered with cross (+).
 At all points marked with a cross (+) set 4" x 4" concrete monument with a 4" x 4" Brass Cap marked S. M. M. P. and centered with a cross (+).
 At all points marked with a cross (+) set 2" pipes filled with concrete with inverted nail in top.

Detail at Sta. XXVI
Scale 1"=20'



Detail at Sta. XXVII
Scale 1"=20'



Plot Showing Connection at B.S.M. 18.
Scale 1"=20'

F.M. 15355
 OF
 A3

SANTA MONICA MOUNTAIN PARK

C. S. NEGATIVE No. 133.

BOUNDARIES AND TRIANGULATION SYSTEMS

Surveyed May to December 1914. Scale 1"=1,000'

M-509 Wilkie Woodard, Civil Engineer.

COUNTY ENGINEER'S FILED MAP NO. 15355