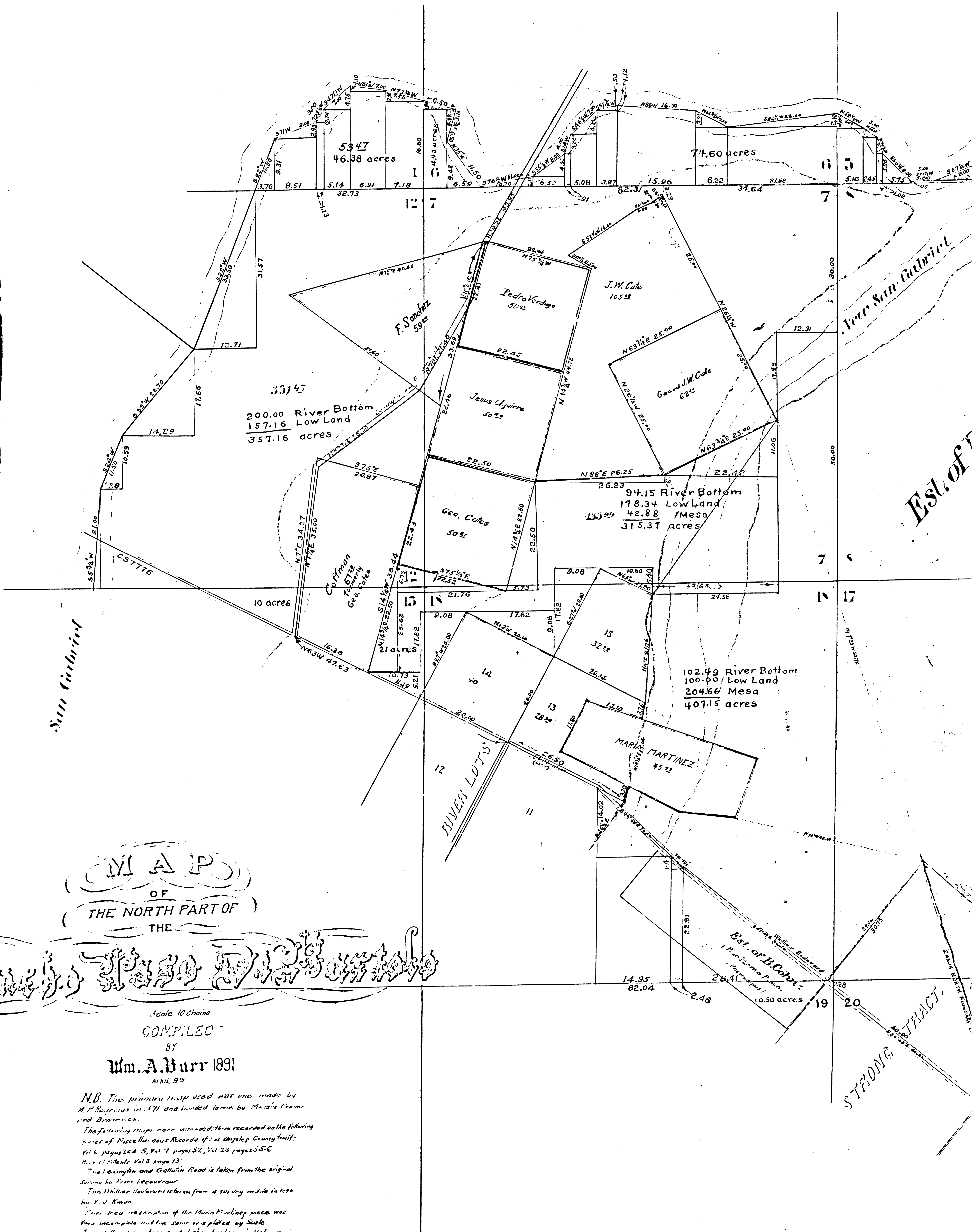


FM. 161611
 A1 OF A2



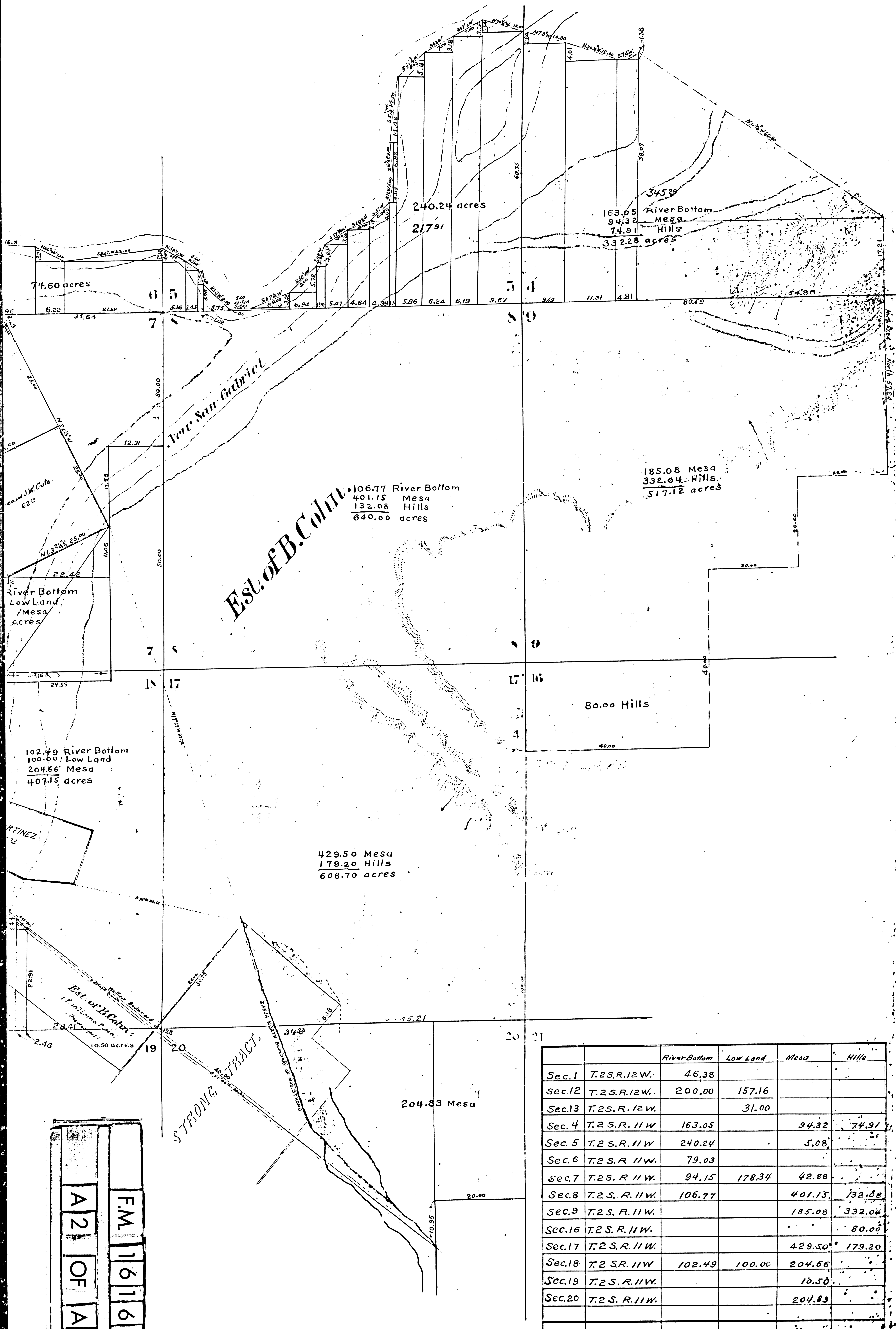
MAP
 OF
 THE NORTH PART OF
 THE
Henry's Grant

Scale 10 Chains
 COMPILED BY
 Wm. A. Burr 1891
 APRIL 9th

N.B. The primary map used was one made by M. P. Thompson in 1871 and handed down by Maria's Truena and Brastner.
 The following maps were used; then recorded on the following pages of Miscellaneous Records of Los Angeles County (unit):
 Vol 6, pages 204-5, Vol 7, pages 52, Vol 23, pages 5-6
 Map of Lots, Vol 3, page 13.
 The Lexington and Gallatin Road is taken from the original survey by Pierre Lecourneur.
 The Miller's Survey is taken from a survey made in 1830 by V. J. Kinn.
 The description of the Maria Martinez piece was very incomplete and the same was plotted by Scale. Part of the corner line and a chain has been omitted between the S.W. Corner of Lot 13 (River Lot) and the West line of the Strong Tract, and the Section Corner 17, 18, 19, 20, should be about that distance east of said West line of Strong Tract.
 All the Bearings and Distances on this map agree with Lecourneur and the Miller's and this is for the connection given at the corner in Secs. 14, 15, 16, 17, 18, 19, but the corner in sec. 13, 18, 19, 17, turns the corner about 5 (five) chains south of hip, hence the corners shown on this map are about 5 chains north of the corners claimed by Lecourneur.

Wm. A. Burr

NEG. 698
 11750
 11737



		River Bottom	Low Land	Mesa	Hills
Sec. 1	T. 2 S. R. 12 W.	46.38			
Sec. 12	T. 2 S. R. 12 W.	200.00	157.16		
Sec. 13	T. 2 S. R. 12 W.		31.00		
Sec. 4	T. 2 S. R. 11 W.	163.05		94.32	74.91
Sec. 5	T. 2 S. R. 11 W.	240.24		5.08	
Sec. 6	T. 2 S. R. 11 W.	79.03			
Sec. 7	T. 2 S. R. 11 W.	94.15	178.34	42.88	
Sec. 8	T. 2 S. R. 11 W.	106.77		401.15	132.08
Sec. 9	T. 2 S. R. 11 W.			185.08	332.04
Sec. 16	T. 2 S. R. 11 W.				80.00
Sec. 17	T. 2 S. R. 11 W.			429.50	179.20
Sec. 18	T. 2 S. R. 11 W.	102.49	100.00	204.66	
Sec. 19	T. 2 S. R. 11 W.			10.50	
Sec. 20	T. 2 S. R. 11 W.			204.83	
		1032.11	466.50	1578.00	798.23
Total area		3874.84 acres			

Surveyed in Sec. 1891 by the Survey of Solano

F.M. 161611
 A2 OF A2