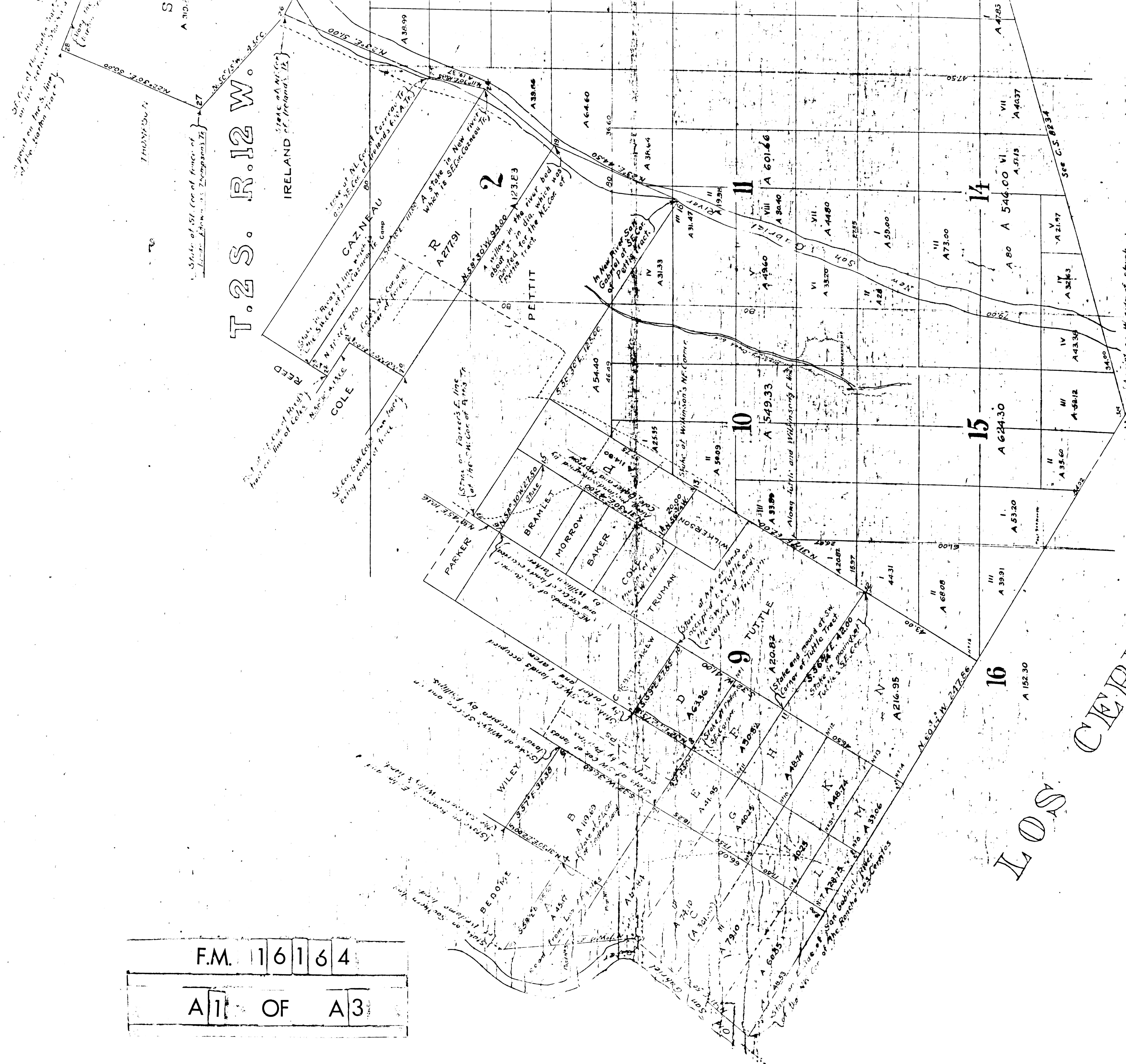


| | | | | | |
|------|----|----|---|---|---|
| F.M. | 1 | 6 | 1 | 6 | 4 |
| A | 11 | OF | A | 3 | |



T.2 S. R.12 W.

LOS CERILLOS

Misc. 32-18

FM. 16164
 A 2 OF A 3



COLIMA'S RANCH

BLAND RANCH

D 11-50

John G. Downey, John P. Farland et al. to Santa Gertrudes Land Association

The following boundaries and described portions of the Rancho Colima, and said portions being the same, and portions of said Rancho not heretofore sold or conveyed or bargained to be sold or conveyed to other parties by the parties of the 1st part, the said Rancho, being particularly described and shown as follows: TRACT NO. 1, TRACT NO. 2, TRACT NO. 3, TRACT NO. 4, (as shown on the map above). The parties of the 1st part hereby expressly reserve from the operation of this conveyance and except from the same, the following described portions of the Rancho Colima, to wit: the portion of the Rancho Colima conveyed by deed dated Dec. 1863 and recorded in Book 1 page 140 of deeds, Los Angeles County, Also the portion of land conveyed by Cecilio Gomez and C. Perez on April 3, 1865, recorded in book 1 page 140 of deeds, Los Angeles County, the same from said C. P. de Lopez dated April 3, 1865, recorded in book 1 page 140 of deeds, Los Angeles County, the same from said Cecilio Gomez dated 1st of Dec. 1865, recorded in book 6, pages 35 and 36, and the improvements thereon.

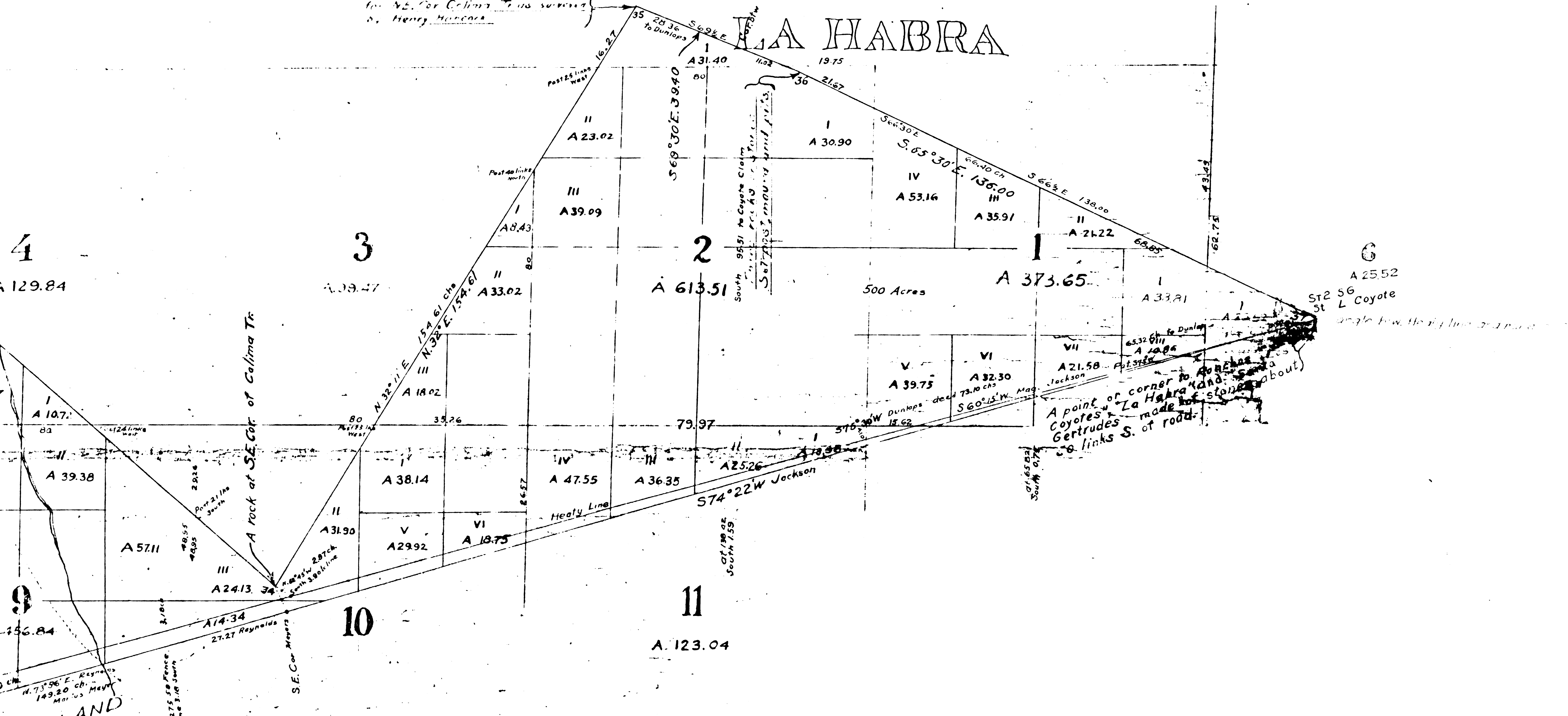
Recorded October 12, 1868

F.M. 116164
 A 31 OF A 31

of agreed line
 John G. Downie

IA'S RANCHO

LA HABRA



RANCHO SANTA GERTRUDES

LOS ANGELES COUNTY, CAL.

Subdivided for the
SANTA GERTRUDES LAND ASSOCIATION.

by
HOFFMANN BROS.
 Civil Engineers & Surveyors

SAN FRANCISCO, CALIF.
 MAR 14 1915 E

MEC. 609
 Scale 16 Ch² to 1 inch
 See C.S. 7708

Recorded October 12, 1914

The data shown on this map was added
 by the County Surveyor in 1917 from information
 given in Deed Book H, page 50 & 51 filed in the
 Recorder's Office