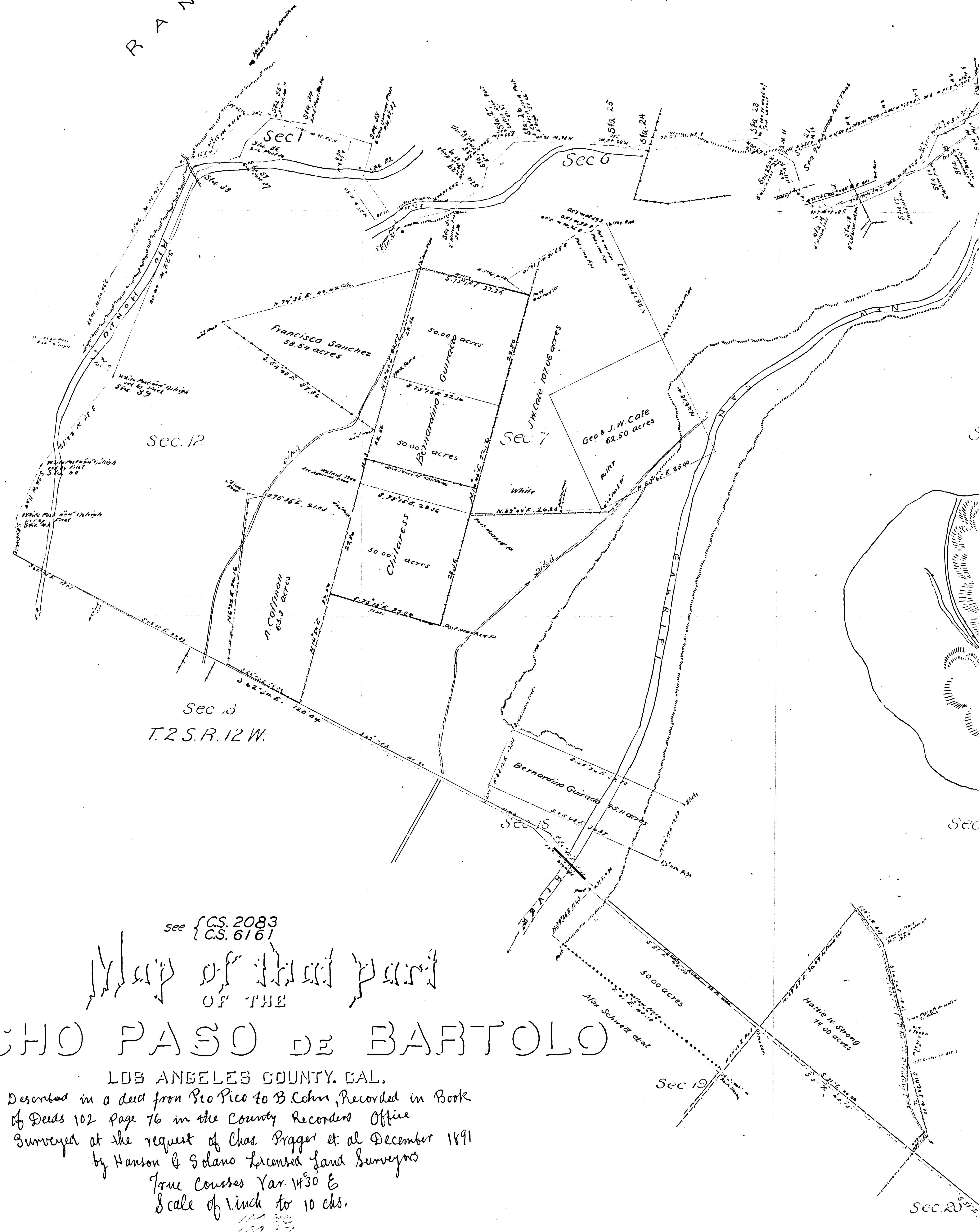


RANCHO LA MERCED

R<sup>o</sup> SAN ANTONIO



see {CS 2083  
{CS 616}

Map of that part  
OF THE  
RANCHO PASO DE BARTOLO

LOS ANGELES COUNTY, CAL.

Described in a deed from Pio Pico to B. Cohn, Recorded in Book  
of Deeds 102 Page 76 in the County Records Office  
Surveyed at the request of Chas. Proger et al December 1891  
by Hanson & Solano Licensed Land Surveyors  
True Courses Var. 1430 E  
Scale of 1 inch to 10 chs.

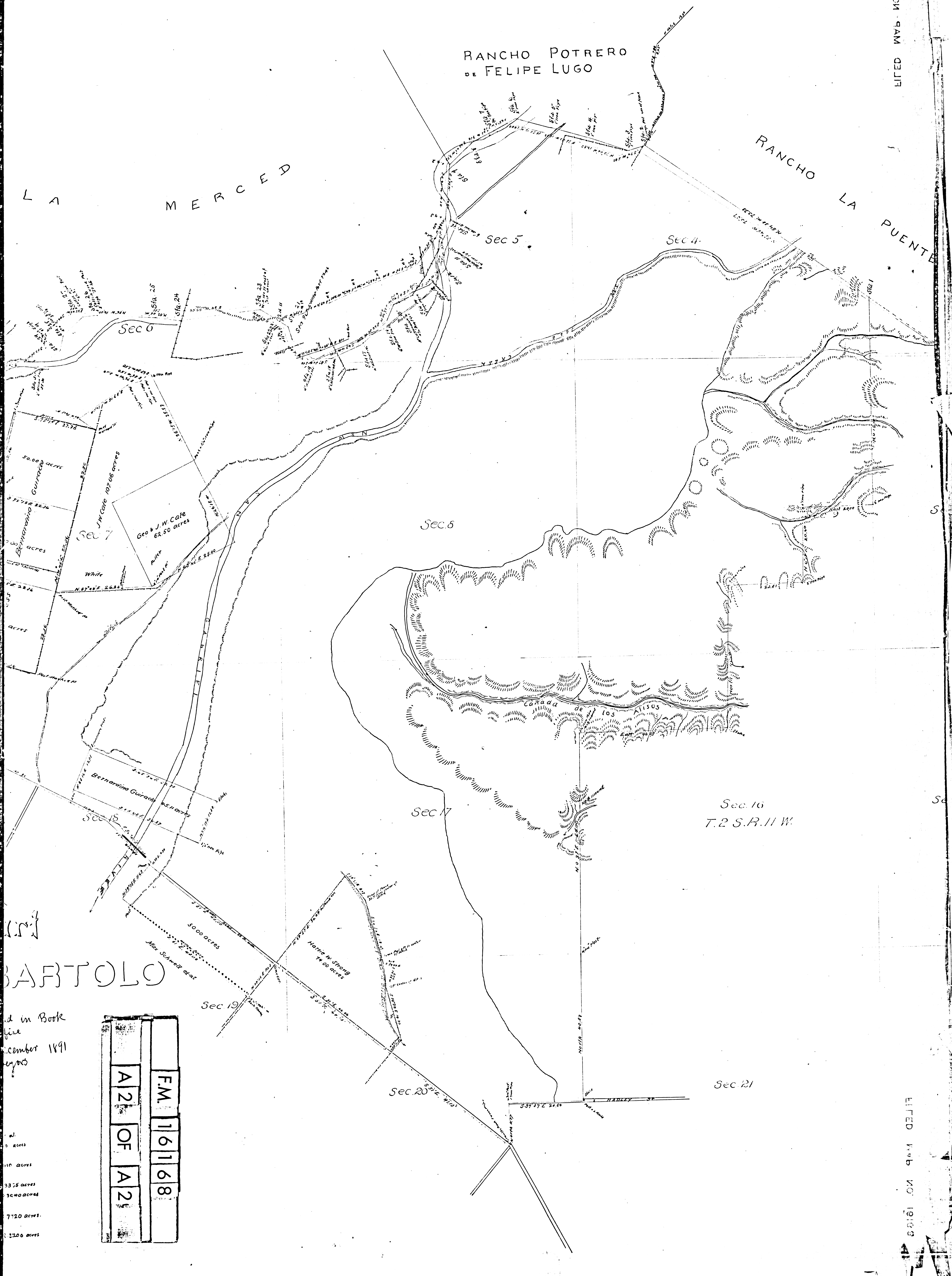
F.M. 16168  
A 11 OF A 2

Note - the following parties occupy lands belonging to Charles Proger et al  
White & Fuller - a triangular piece along their southern fence containing 0.750 acres  
Bernardino Guirado - a strip along his northern fence  
1 1/2 ft wide on the west & 2 1/4 ft wide on the East - Containing 0.610 acres  
Childress - a strip along his southern fence 1075 feet  
wide on the West and 9.5 feet wide on the East - Containing 0.3385 acres  
also a strip along his Eastern fence 223 ft wide - Containing 0.3040 acres  
Max Schwed et al. - a triangular piece along his northern  
western fence 915 feet wide along Strong's fence - Containing 2.7720 acres.  
Hattie W. Strong - an irregular piece along her Eastern  
boundary between the middle of the ditch and her fence containing 2.5200 acres

RANCHO POTRERO DE FELIPE LUGO

RANCHO LA PUENTE

LA MERCED



BARTOLO

in Book  
file  
ember 1891  
eys

F.M.	16168
A2	OF
A2	

0 acres  
10 acres  
3375 acres  
3400 acres  
7120 acres  
11200 acres