

North Boundary Line

of the
City of Los Angeles
Fred Eaton, City Engr.

Sept. 1890
Scale, 100 Ft. to 1 Inch.

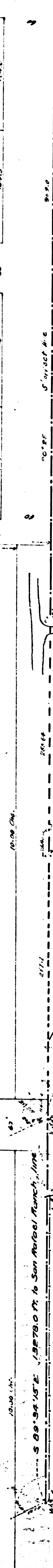
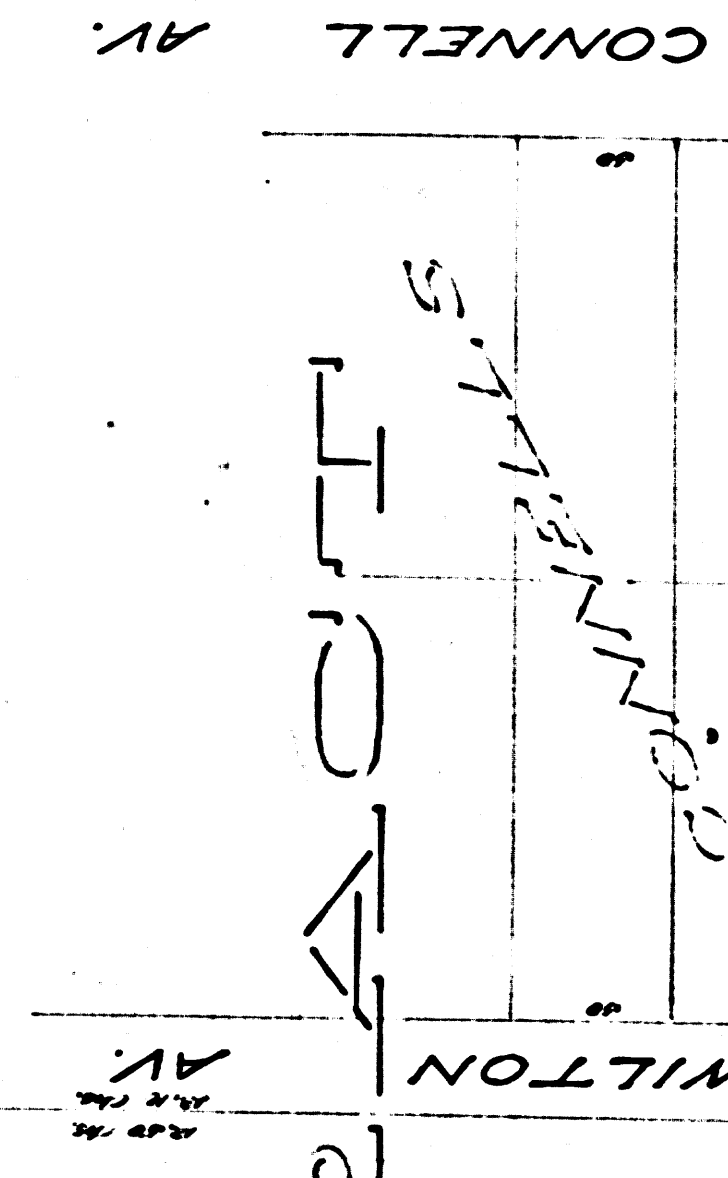
111 40
1141
1109

53

LILICK

54

TRACOT



WEST CITY BOUNDARY

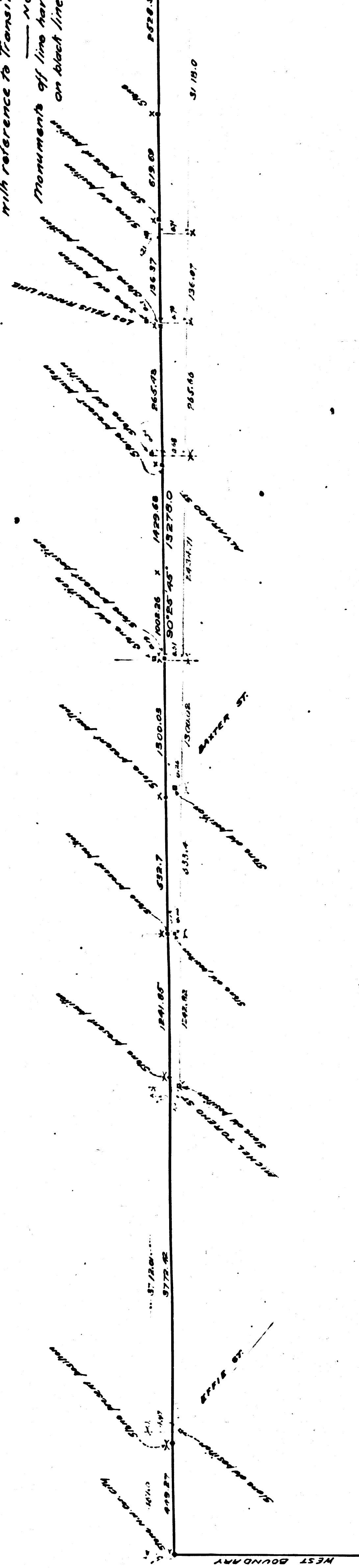
MUSKIEPUS GROVE
ORCHARD

EFFIE ST.

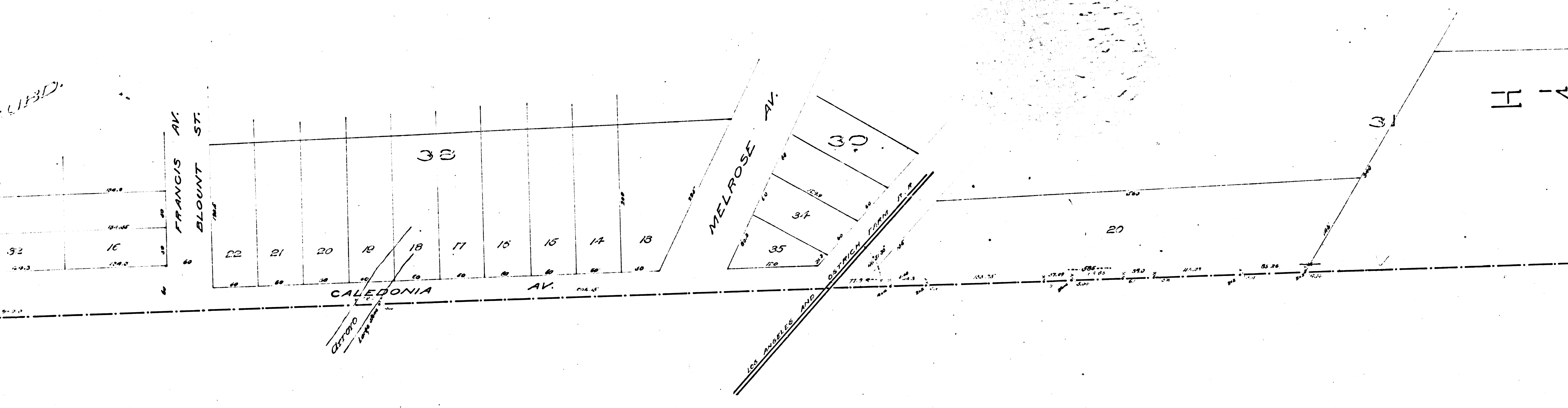
34

F.M.	1	6	2	7	6
A1	OF	A17			

Distributed at
North Bou
with reference to Transit
Monuments of line here
on each line of

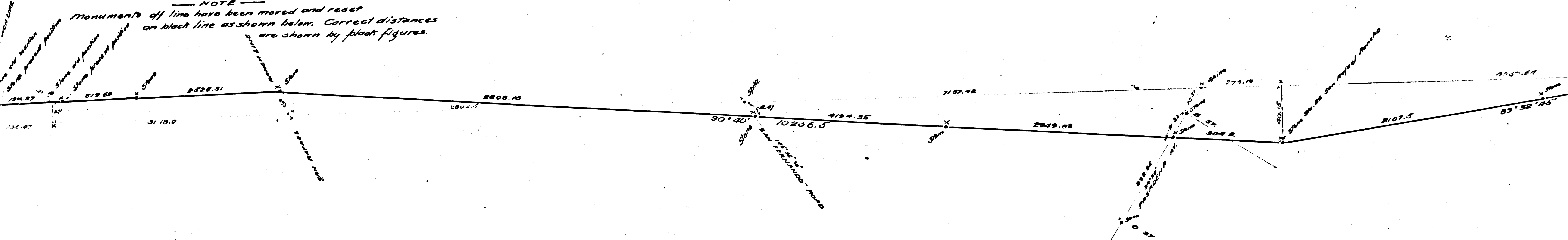


F.M.		1	6	2	7	6
A	2	OF	A	1	7	



*Distorted sketch showing
North Boundary Line
with reference to Transit line and monuments.*

NOTE
Monuments off line have been moved and reset
on black line as shown below. Correct distances
are shown by float figures.



I V A N H O E

MICHEL TORENO ST.
KENNETH AV.

Q2

21

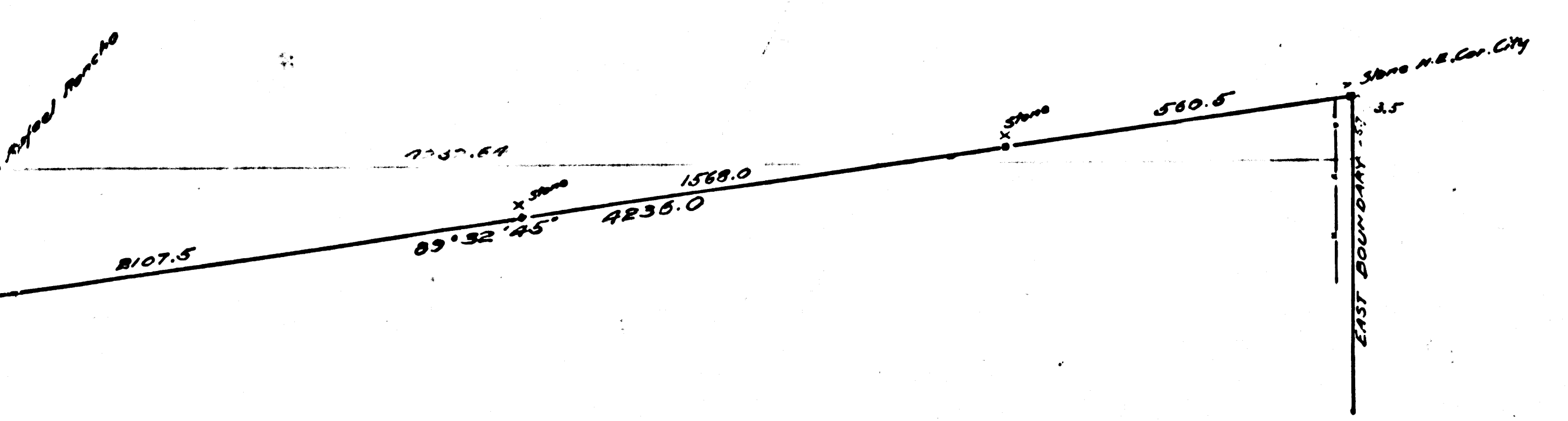
101

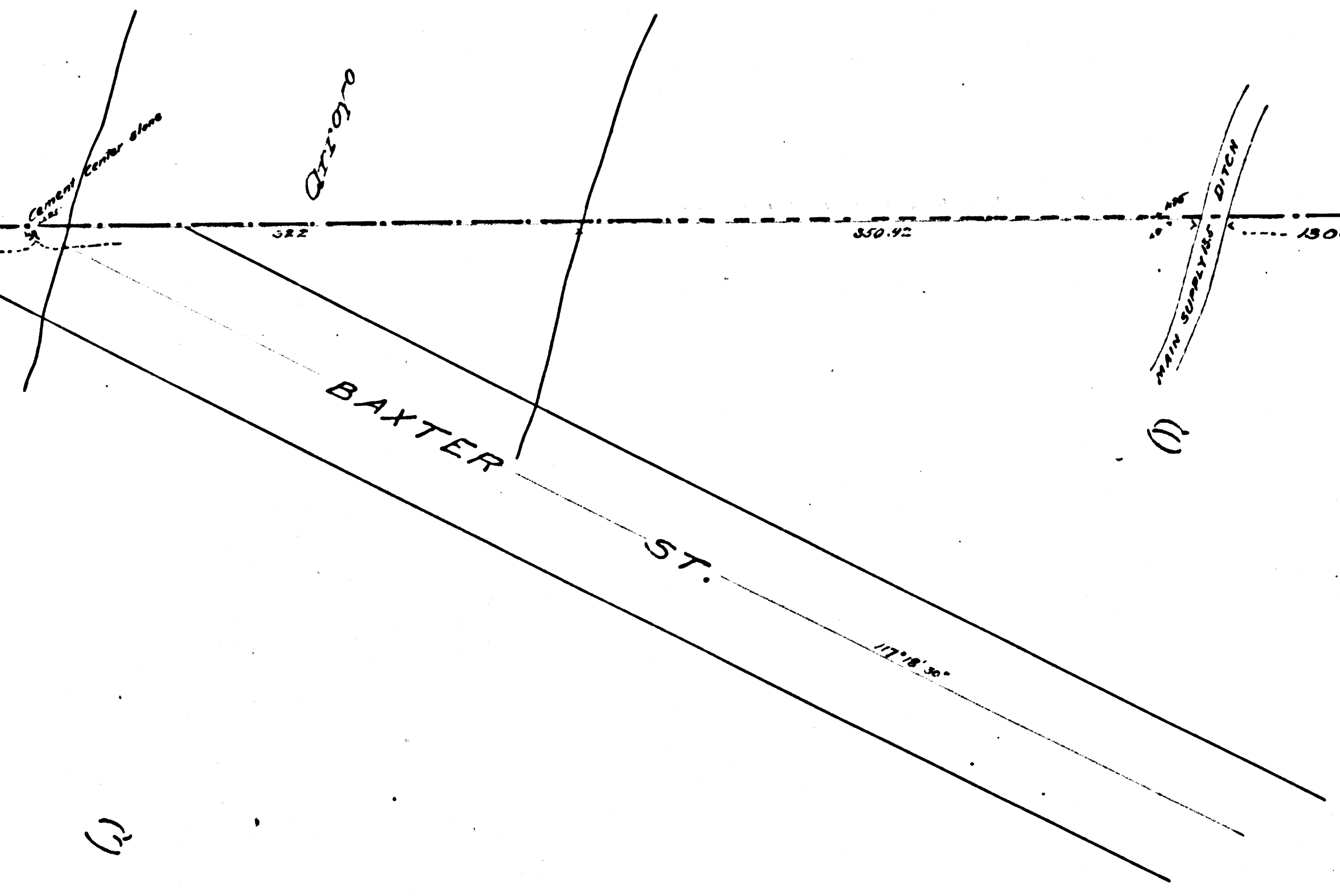
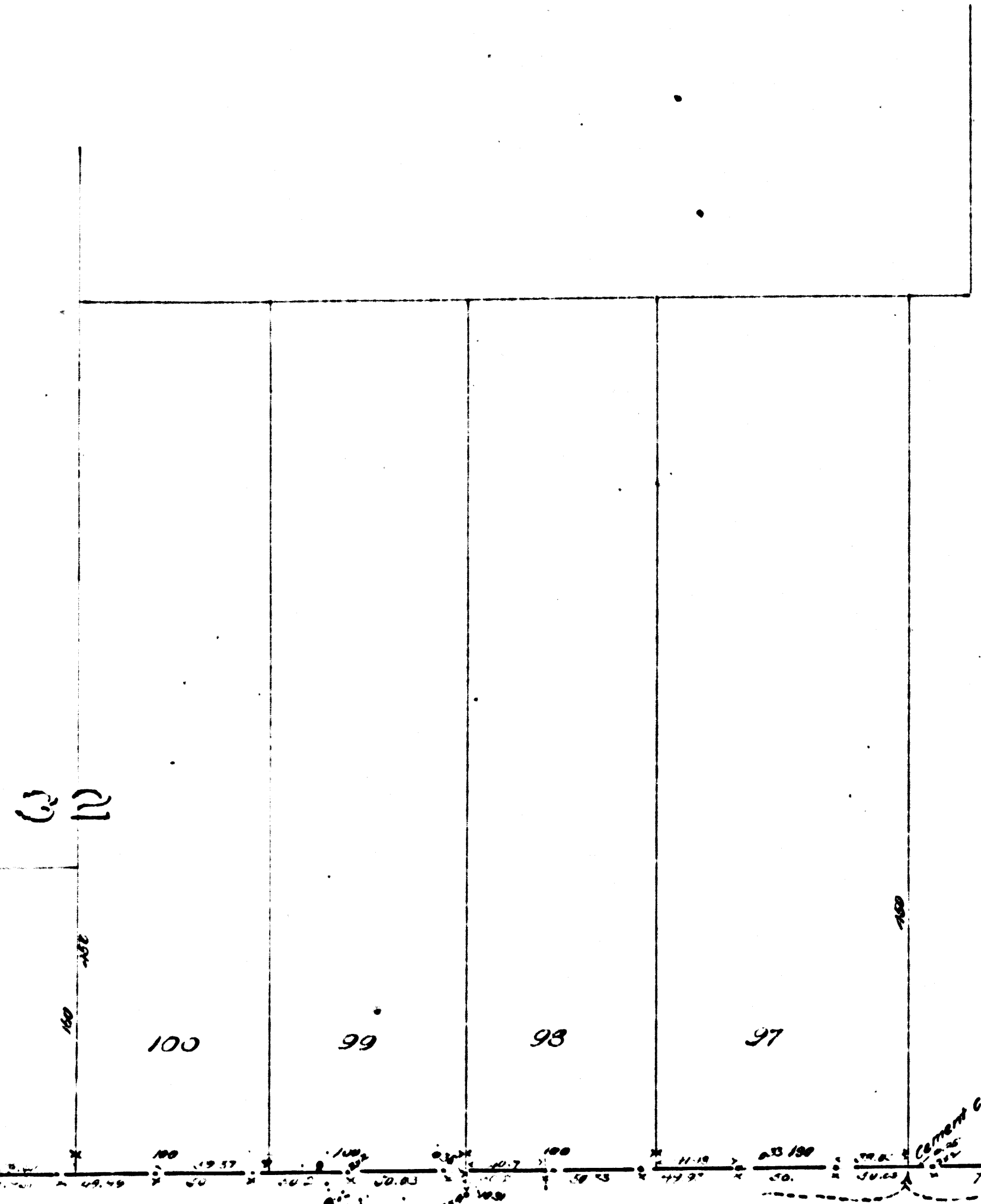
100

99

98

F.M.	1	6	2	7	6
A	3	OF	A	1	7





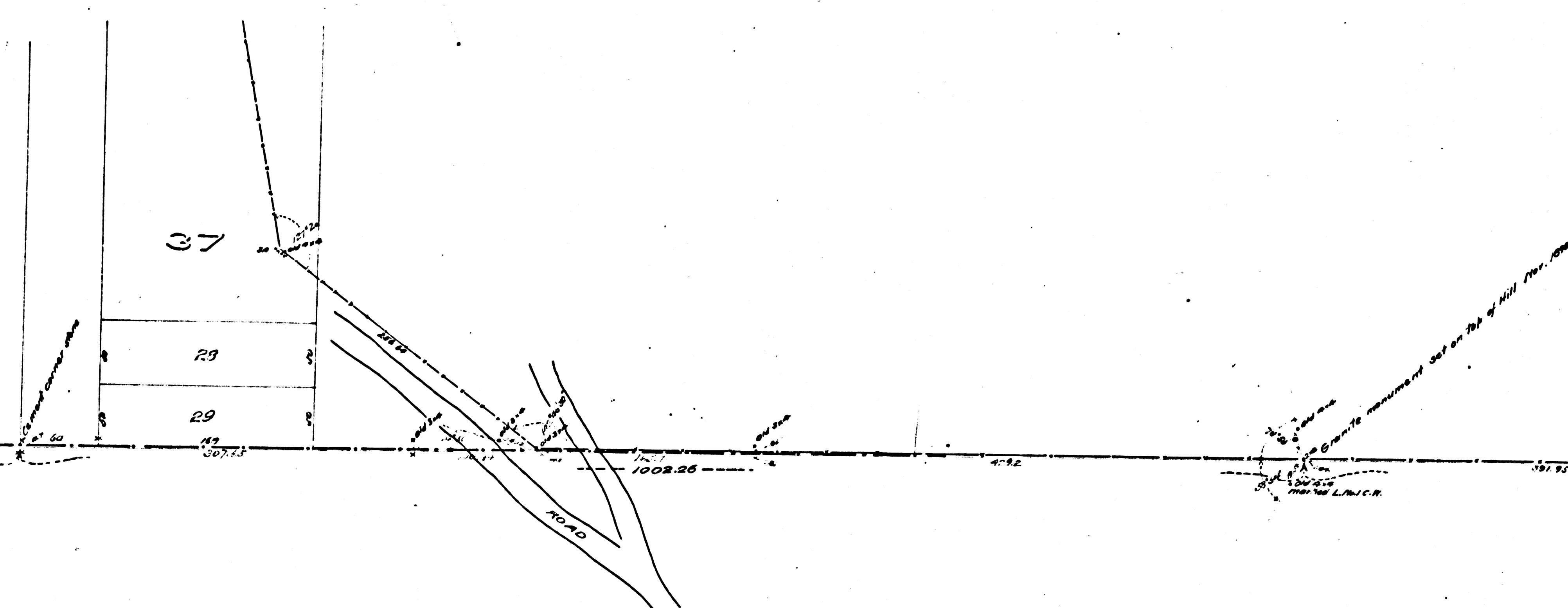
30

30

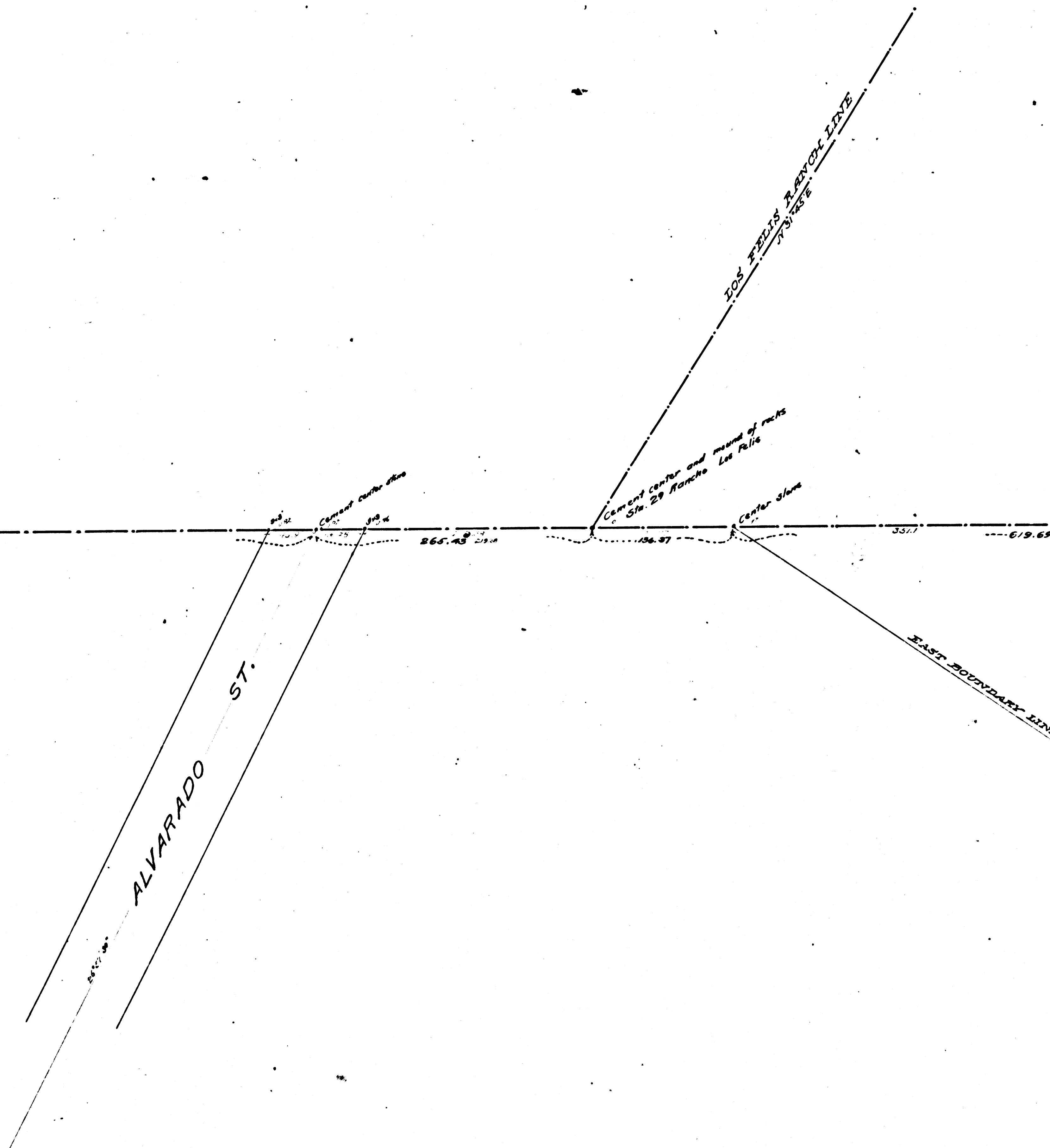
F.M.		1	6	2	7	6
A	4	OF	A	1	7	

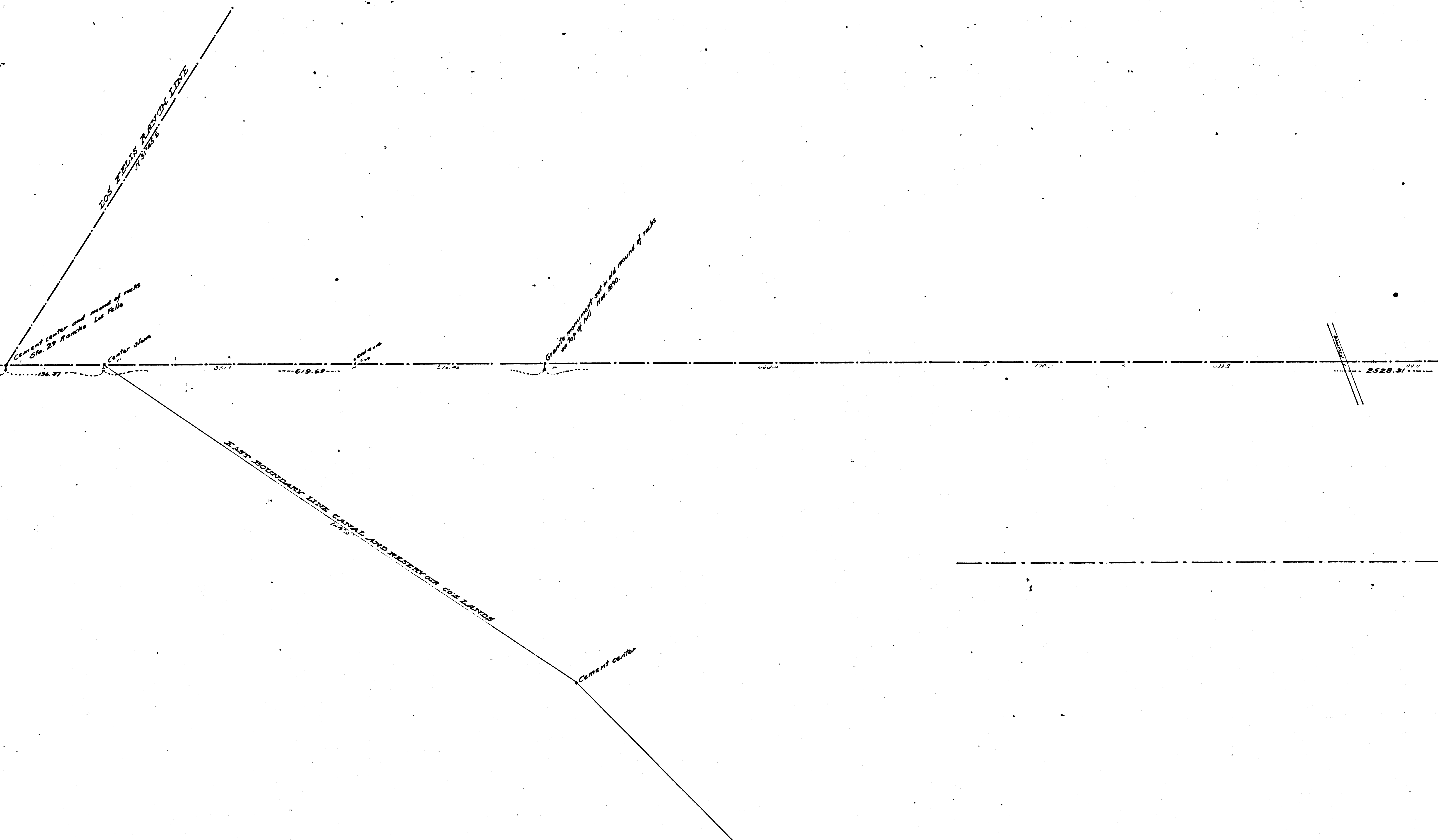
31

F.M. 16276
A5 OF A17

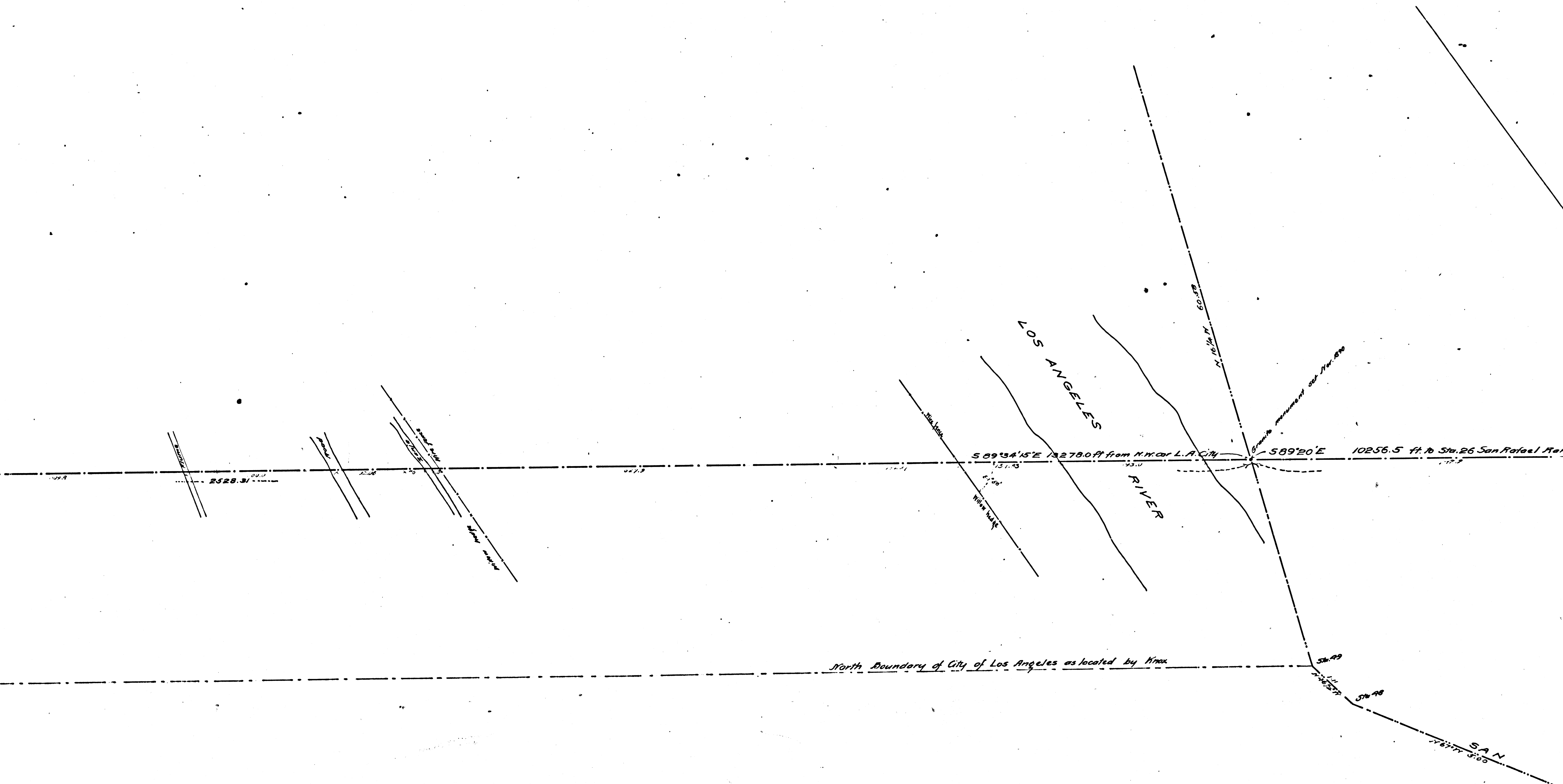


F.M.	
1	6276
A 6	OF A 17



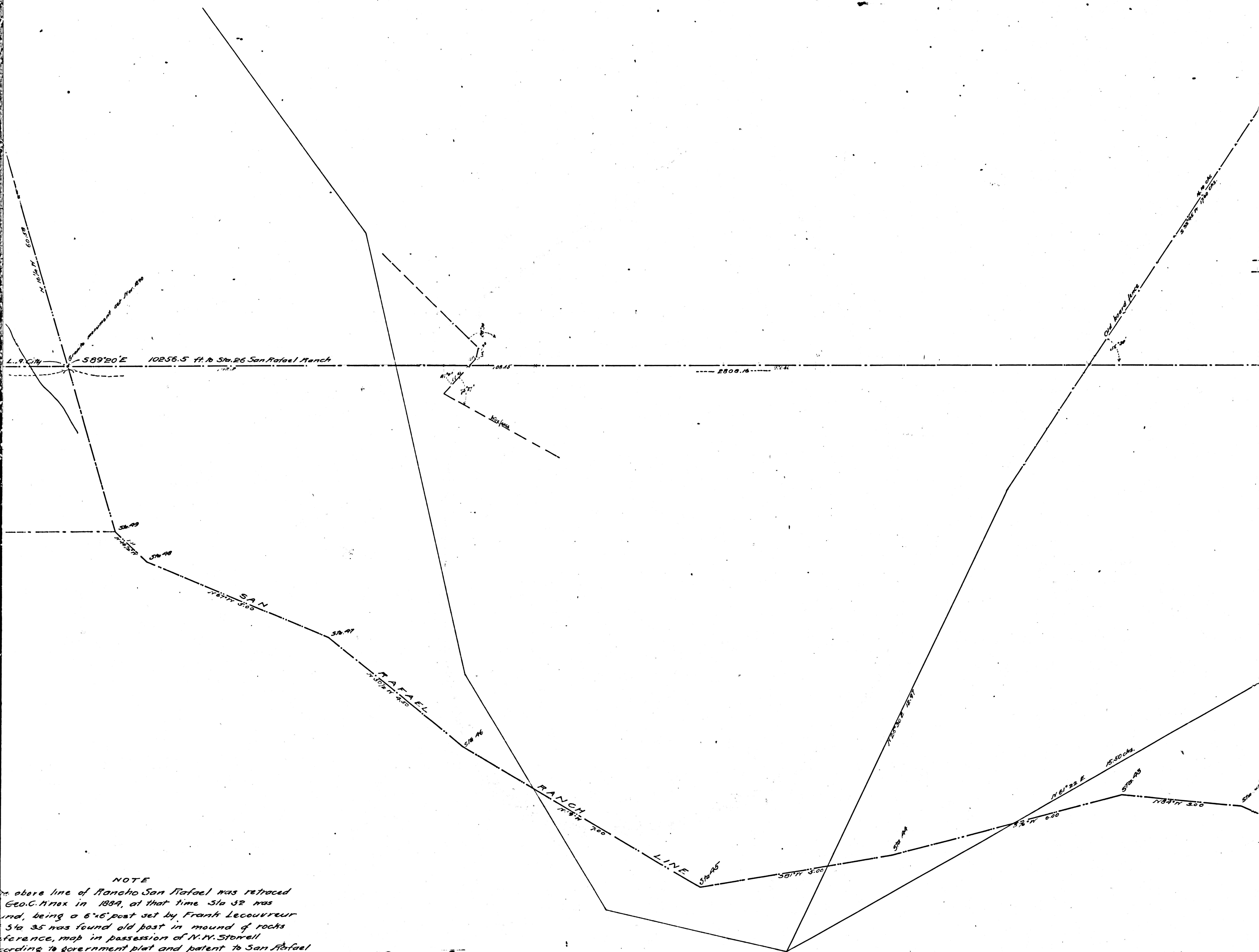


F.M.		1	6	2	7	6
A	7	5	OF	A	1	7



NOTE
 The above line of Rancho San Rafael was retraced by Geo. C. Max in 1889, at that time Sta 32 was found, being a 6"x6" post set by Francis Lecoureur at Sta 35 was found old post in mound of rocks. Reference map in possession of N. N. Storrell according to government plat and patent to San Rafael Rancho, North Boundary line strikes Sta. 49 but Lecoureur's map of San Rafael Rancho filed in County Clerk's Office shows it crossing North of Sta. 49.

F.M.		1	6	2	7	6
A 8		OF	A	1	7	



NOTE

The above line of Rancho San Rafael was retraced by Geo. C. Mox in 1889, at that time Sta 32 was found, being a 6"x6" post set by Frank Lecoureur. Sta 35 was found old post in mound of rocks. According to government plat and patent to San Rafael Rancho, North Boundary line strikes Sta. 49 at Lecoureur's map of San Rafael Rancho filed in County Clerks Office shows it crossing North Sta. 49.

F.M.	1	6	2	7	6
A	9	5	OF	A	117

B

HUNTERS

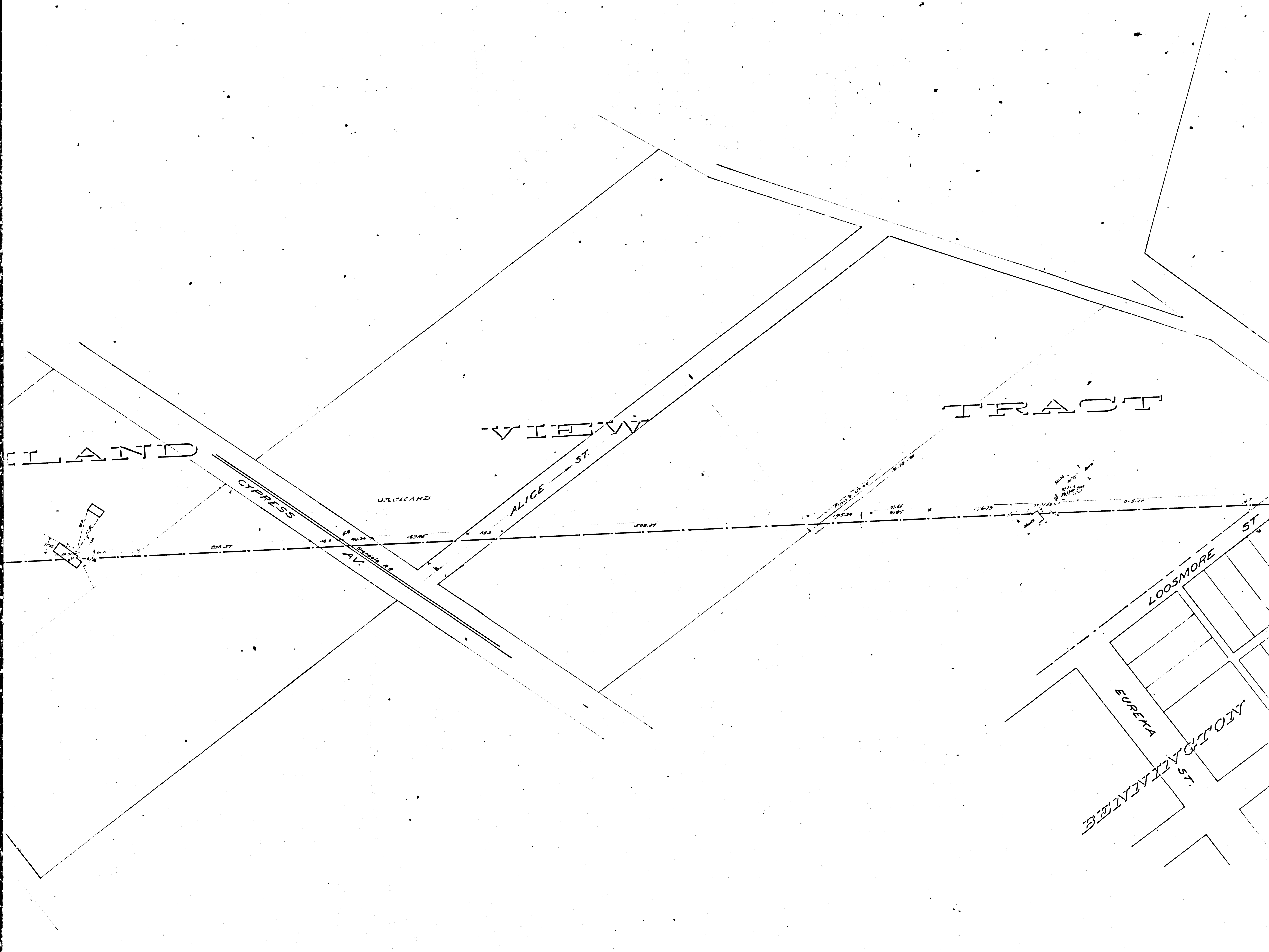
HIGHLAND

SAN FERNANDO ROAD

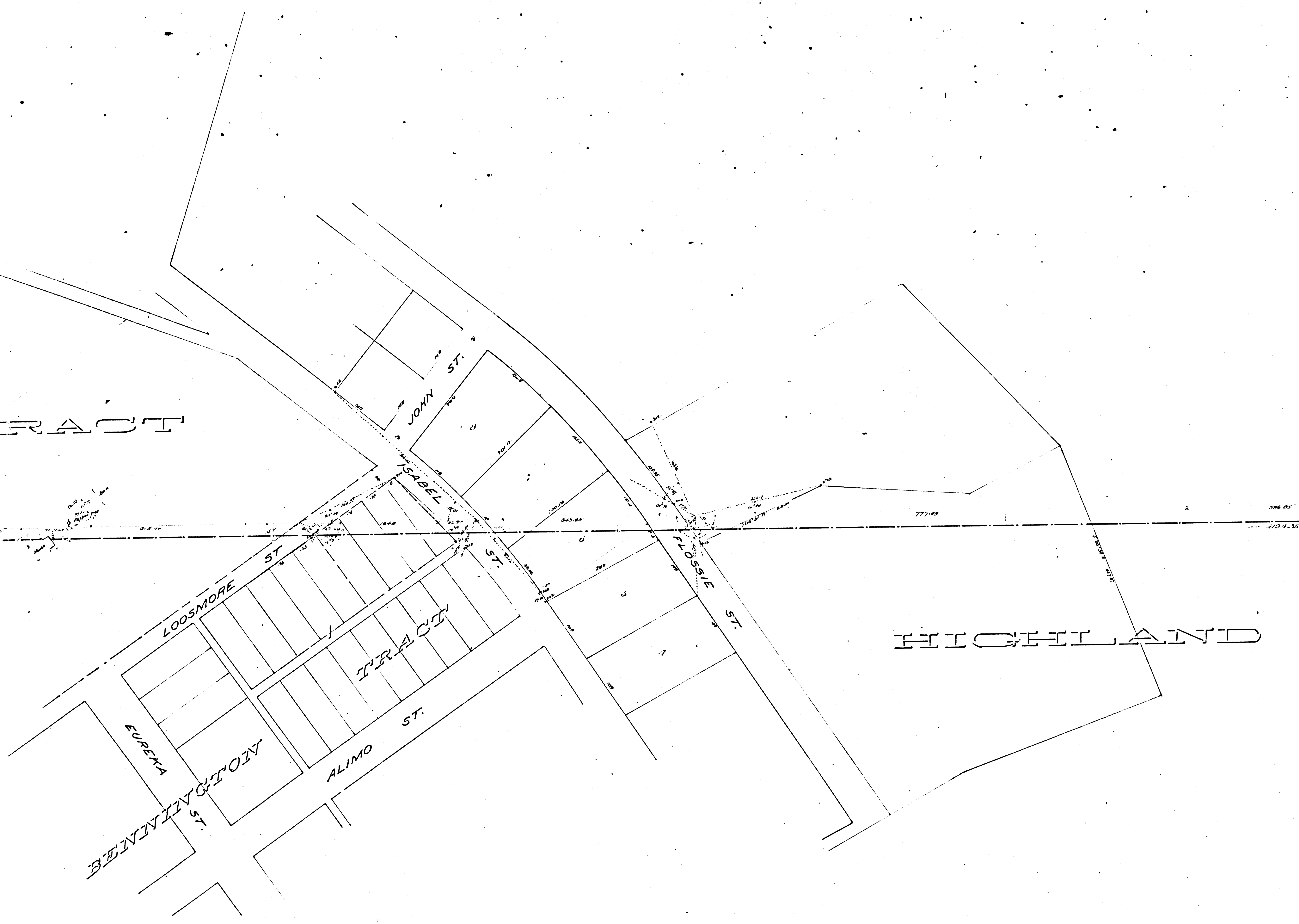
ORCHARD

CYPRUS

A 110 OF A 117	
F.M.	16276



F.M.	1	6	2	7	6	
A	1	1	7	A	1	7

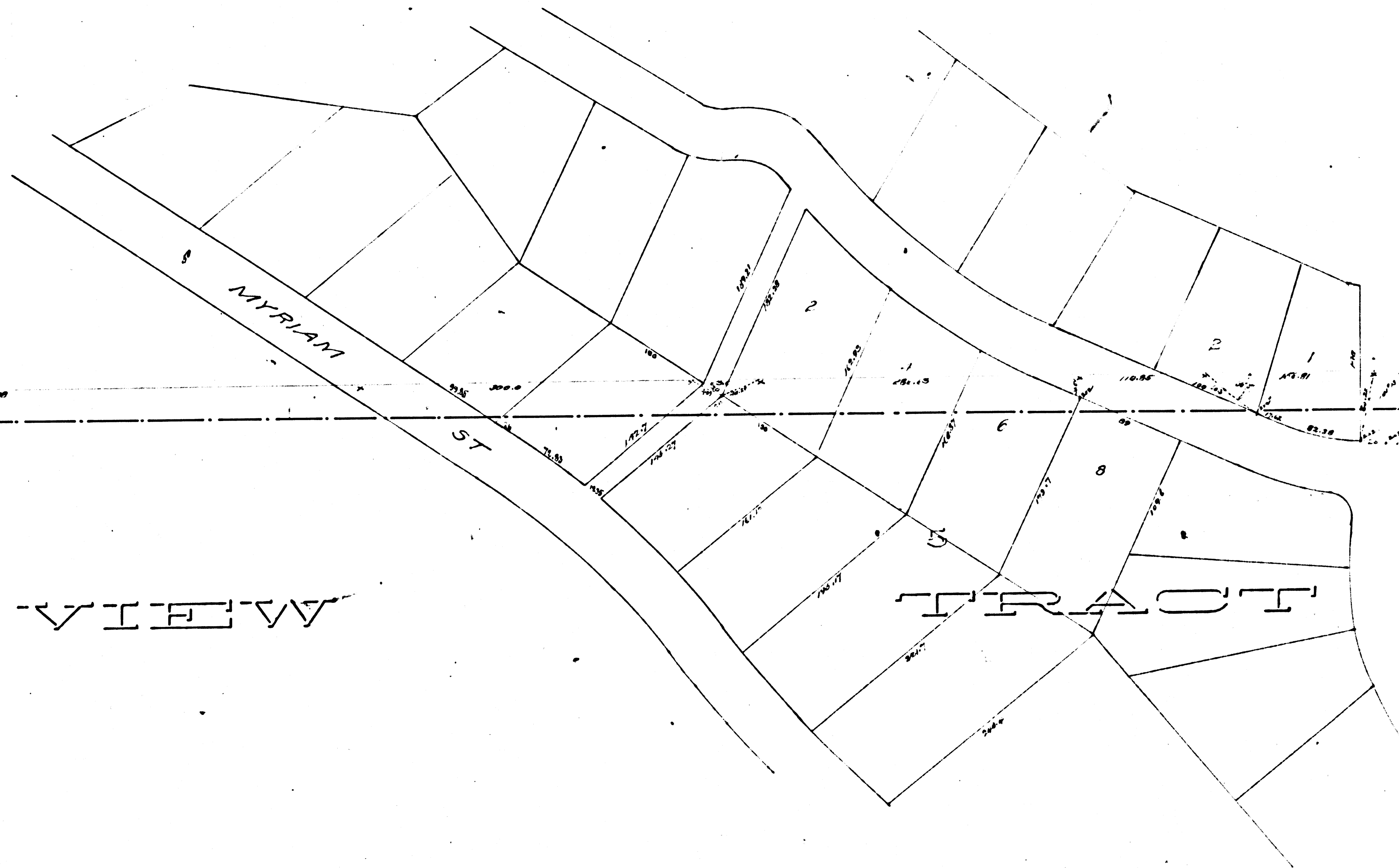


A	1	2	OF	A	1	7
F.M.	1	6	2	7	6	

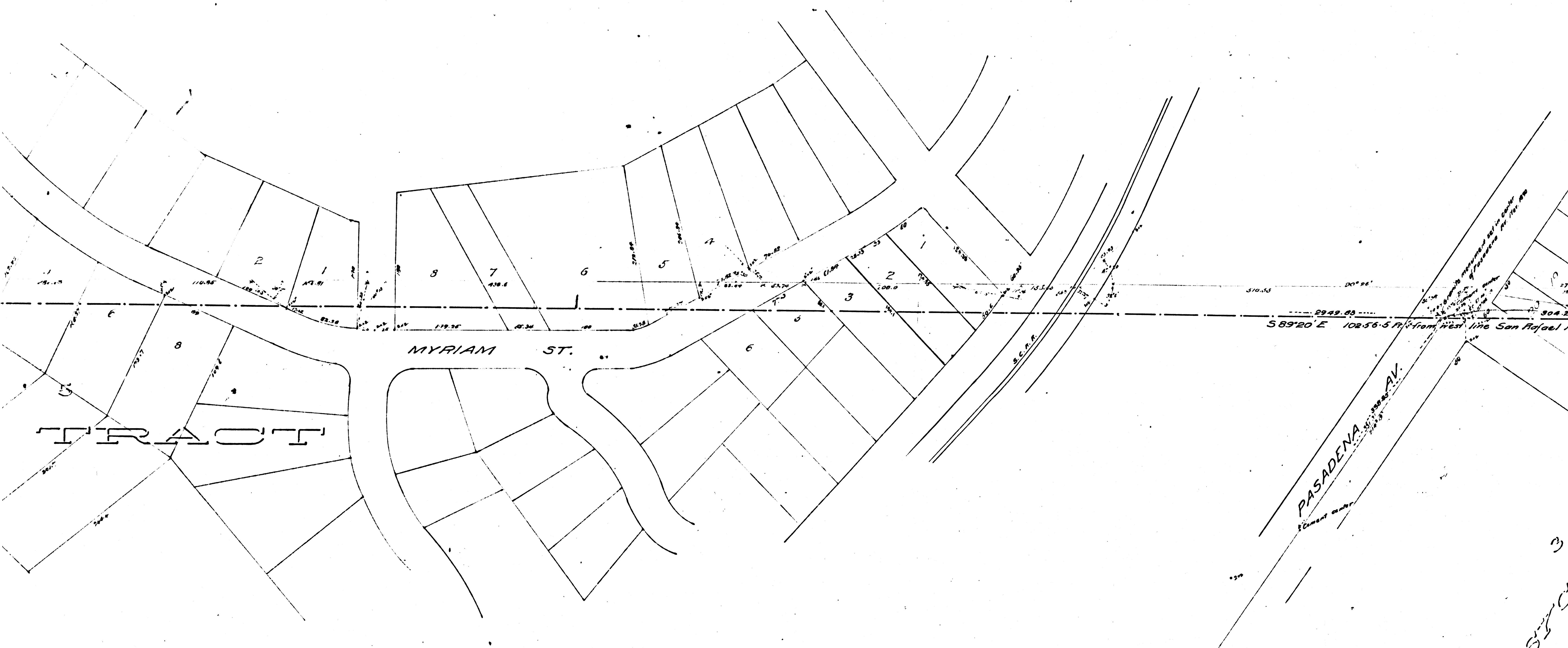
ILAND

VIEW

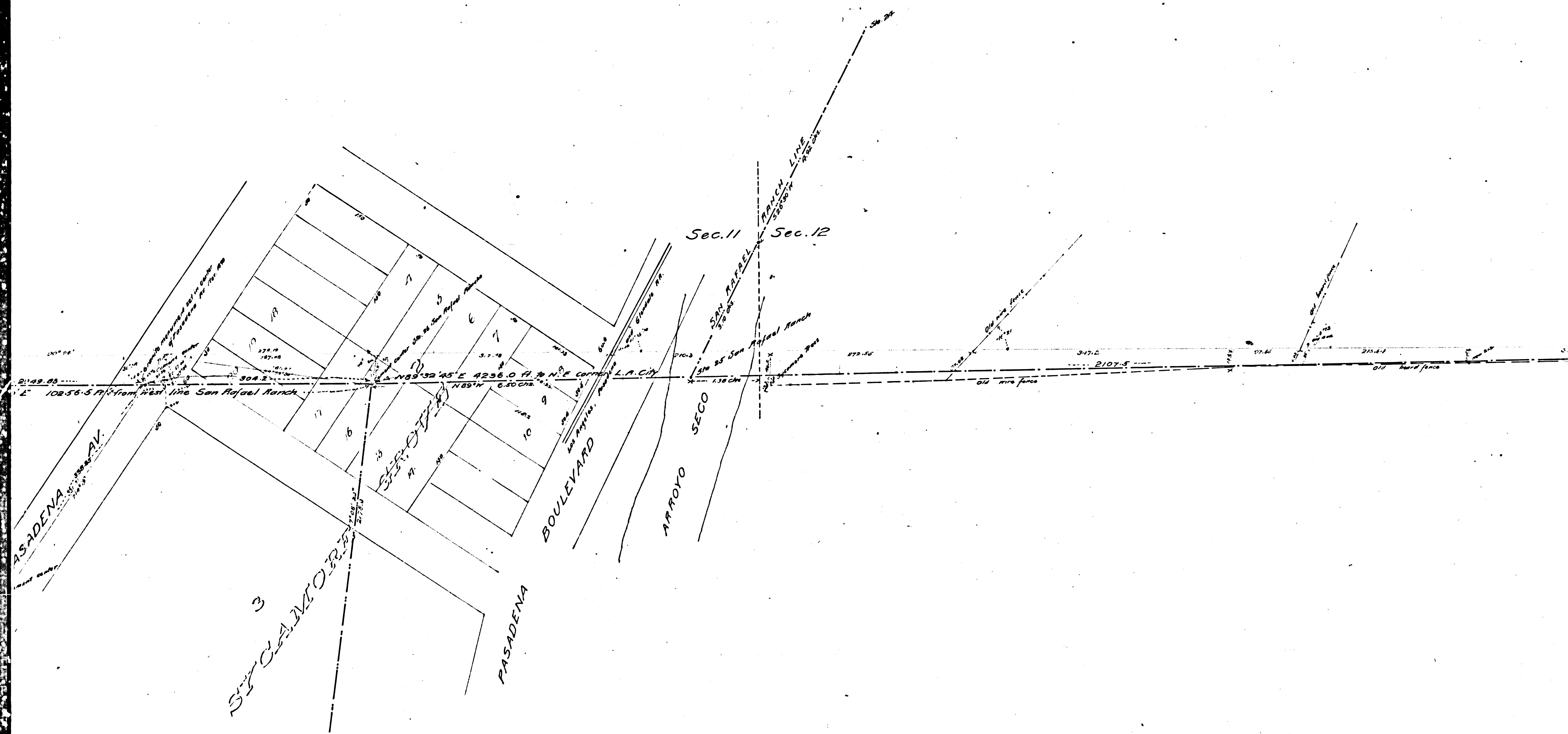
TRACT



F.M.	1	6	2	7	6	
A	1	3	OF	A	1	7



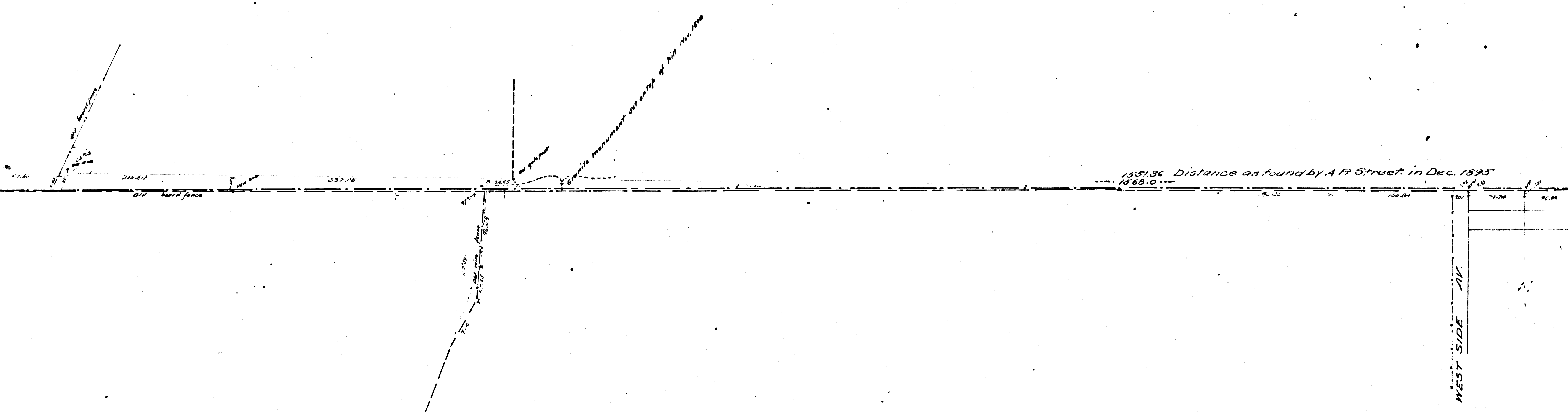
	F.M.	1	6	2	7	6
A	1	4	OF	A	1	7



	F.M.	116276
A	15	OF
A	17	

NOTE
 North Boundary Line as shown by black line was run in Nov. 1890
 and all street centers and other monuments off line were moved
 and reset on said black line as shown more clearly by dotted
 sketch on other end of map; correct distances are shown in
 black figures

Book 94 - 23
 348 - 11

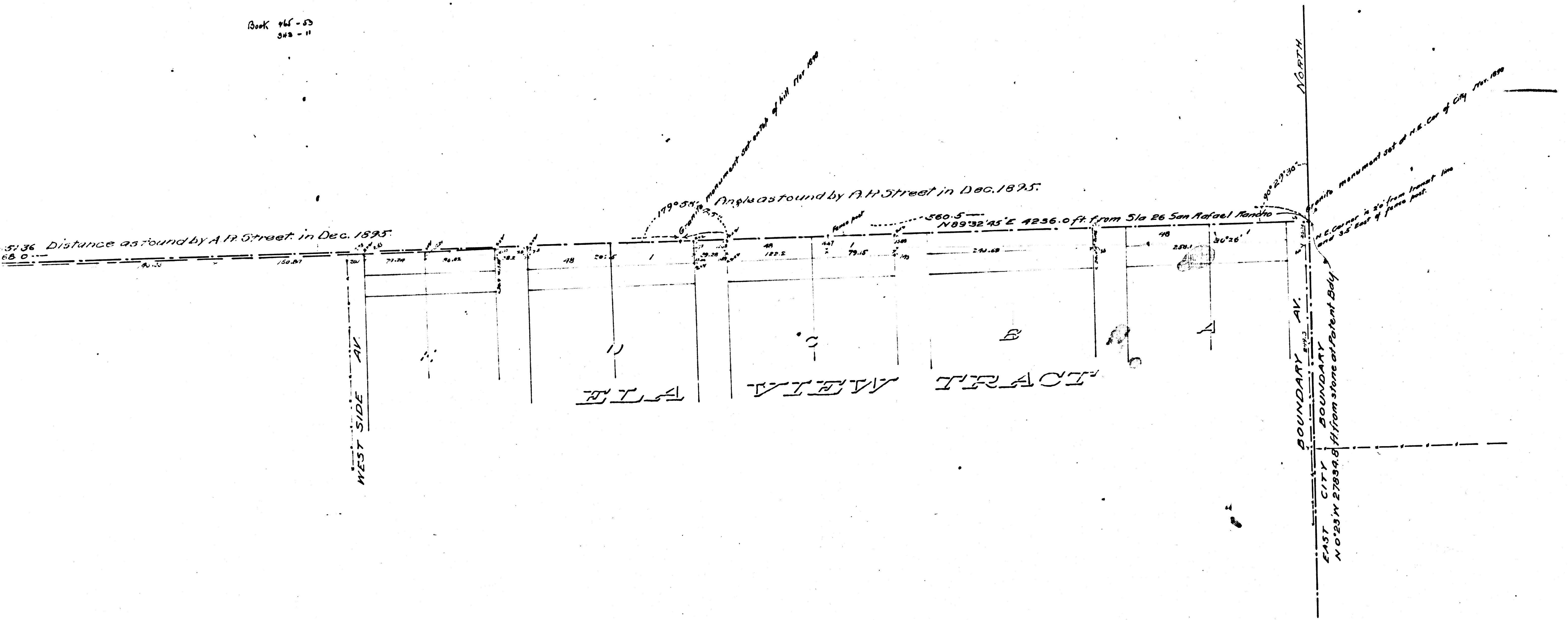


F.M.		1	6	2	7	6
A	1	6	OF	A	1	7

NOTE

Boundary Line as shown by black line was run in Nov. 1890
street centers and other monuments off line was moved
set on said black line as shown more clearly by distorted
on other end of map; correct distances are shown in
figures

Book 64-23
543-11



A 17		F.M. 16276	
OF			
A 17			