

F.M.	1	6	2	7	8
A	1	OF	A	3	

MAP

OF THE

SOUTH PATENT BOUNDARY

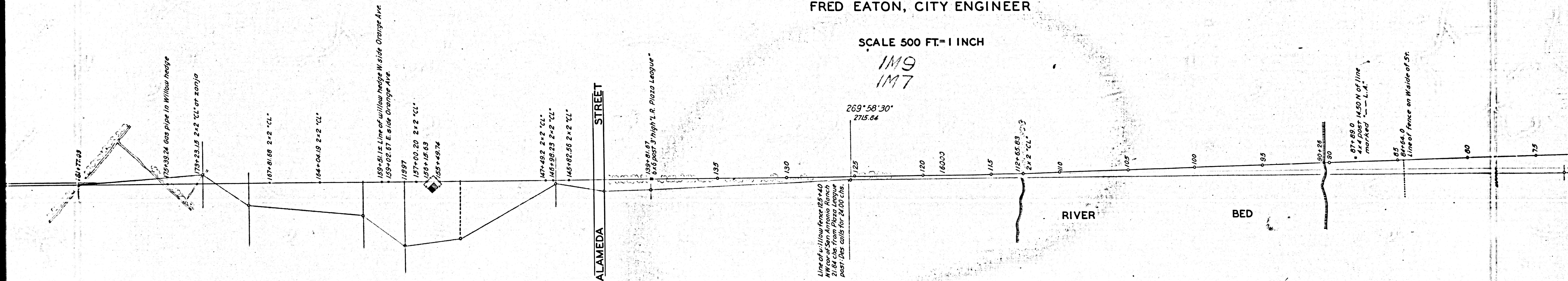
OF THE CITY OF

LOS ANGELES

SURVEYED IN MARCH 1887, UNDER
THE DIRECTION OF
FRED EATON, CITY ENGINEER

SCALE 500 FT. = 1 INCH

1M9
1M7



Line of Willow hedge 125 x 40
21 1/4 chs. from Plaza League
post. One call for 24 00 chs.

This map replacing
original. Filed 4-14-44
Traced by M. Breese
Checked by H. Haenke

F.M.	1	6	2	7	8
A	2	OF	A	3	

Line of fence on W side of St.

269°44'00"
7358.08

4x4 post 6.90 S of line
34+64.5

Post 5x5 1.10 N of line
46+03.20

4x4 post 1.30 N of line
43+00.0

4x4 post set by Hansen &
used by Jackson & Reynolds
39+07.75

269°34'00"
3307.75

52/4 - Patent Distance
5277.1

4x4 Stake (Hansen)

4x4 Stake (Hansen)

4x4 Stake

Stone (Wright & Hansen)
Post (Tinker & Reynolds)

LAGUNA

RANCH

F.M.	1	6	2	7	8
A	3	OF	A	3	