

FILED MAP NO. 10513

FILED MAP NO. 10513

NORTH BOUNDARY LINE

WESTERLY 4350 FT. FROM THE SAN JUAN RIVER

550' 40' 600' 40' 600' 40' 600' 40' 600' 40'

3023' E. 2703' N. 177' TO SAN JUAN RIVER PATENT BOUNDARY

3116' 25' 3116' 25' 3116' 25'

429' 1/2' 402' 66' 249' 66' 249' 66'

3116' 25' 3116' 25' 3116' 25'

550' 40' 600' 40' 600' 40' 600' 40' 600' 40'

ELA

VIEW

TRACT

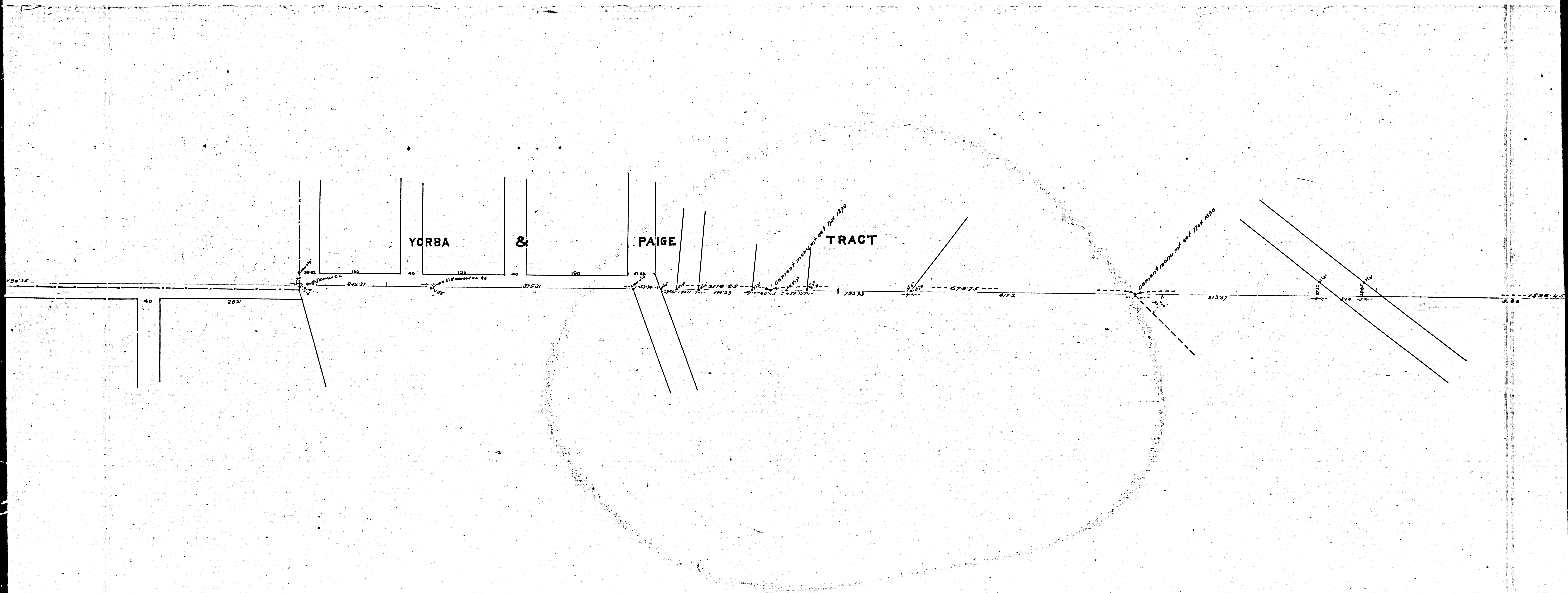
MAP OF THE EAST BOUNDARY LINE OF THE CITY OF LOS ANGELES.

Fred Eaton City Engr. Oct. 1890.

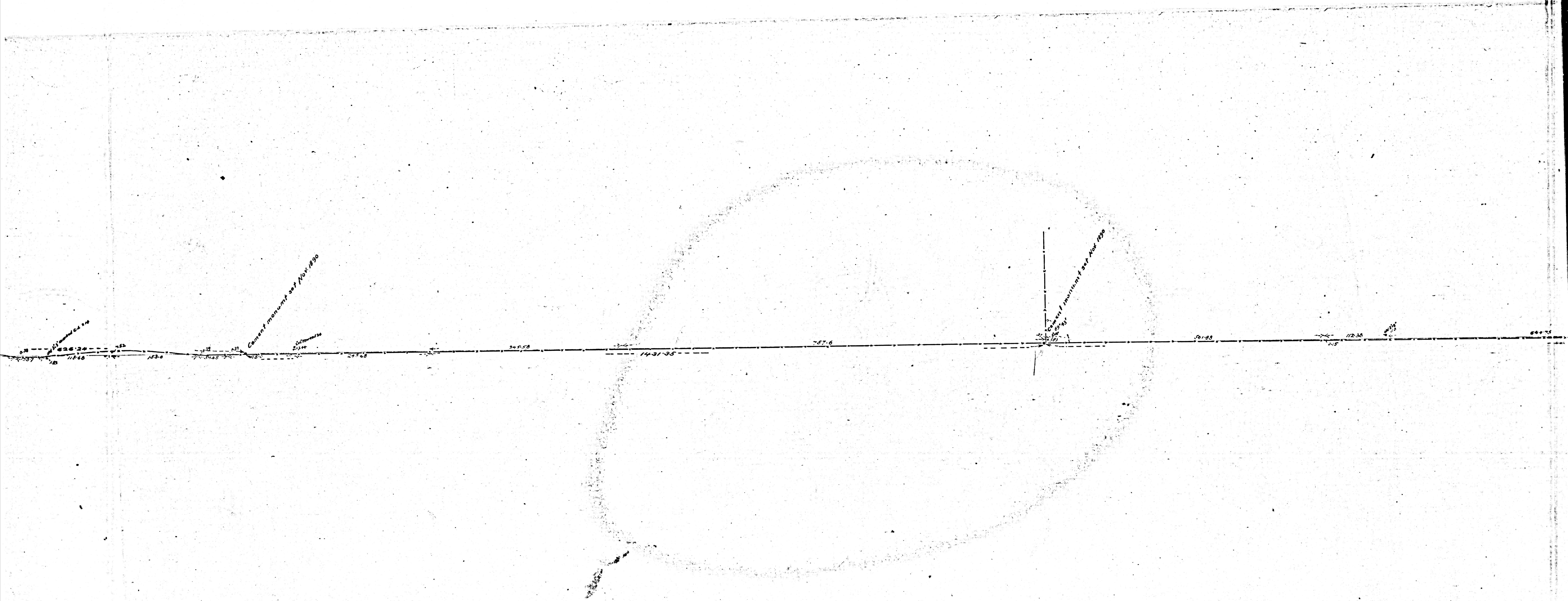
Scale 100 feet to one inch.

Sh. 7

F.M.	1	6	2	7	9
A	1	OF	A	1	1



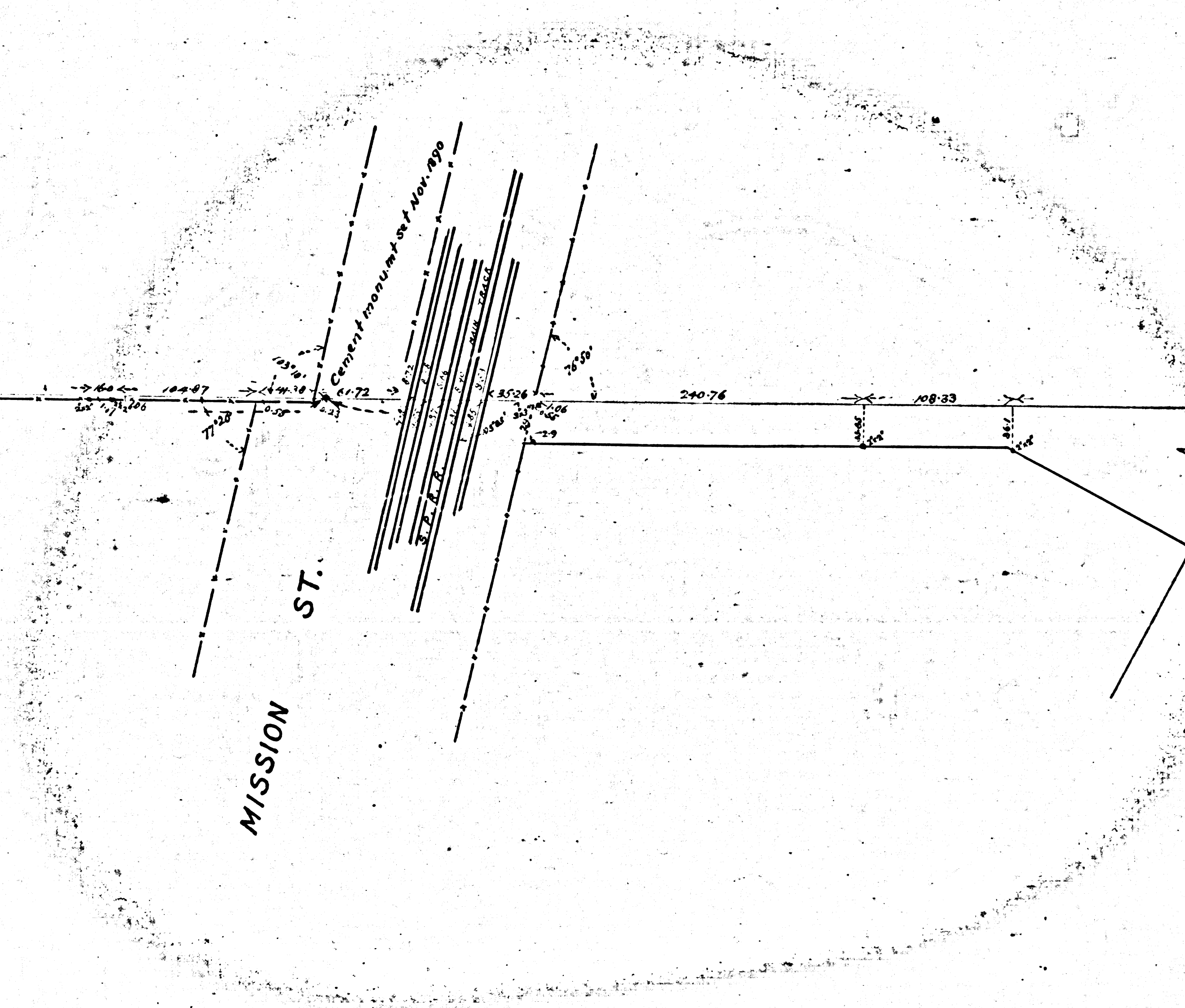
F.M.	1	6	2	7	9
A	2	OF	A	11	



3

	F.M.	1	6	2	7	9	
	A	4	OF	A	11		

4



	F.M.	1	6	2	7	9	
	A	5	OF	A	1	1	

4

5

ALBANY ST.

76

Cement moved set Nov. 1899

Cement moved set Nov. 1899

LANCASTER AV.

HARRISON AV.

2

F.M.	1	6	2	7	9
A	6	OF	A	11	

Approved by
City Council on Nov. 1890

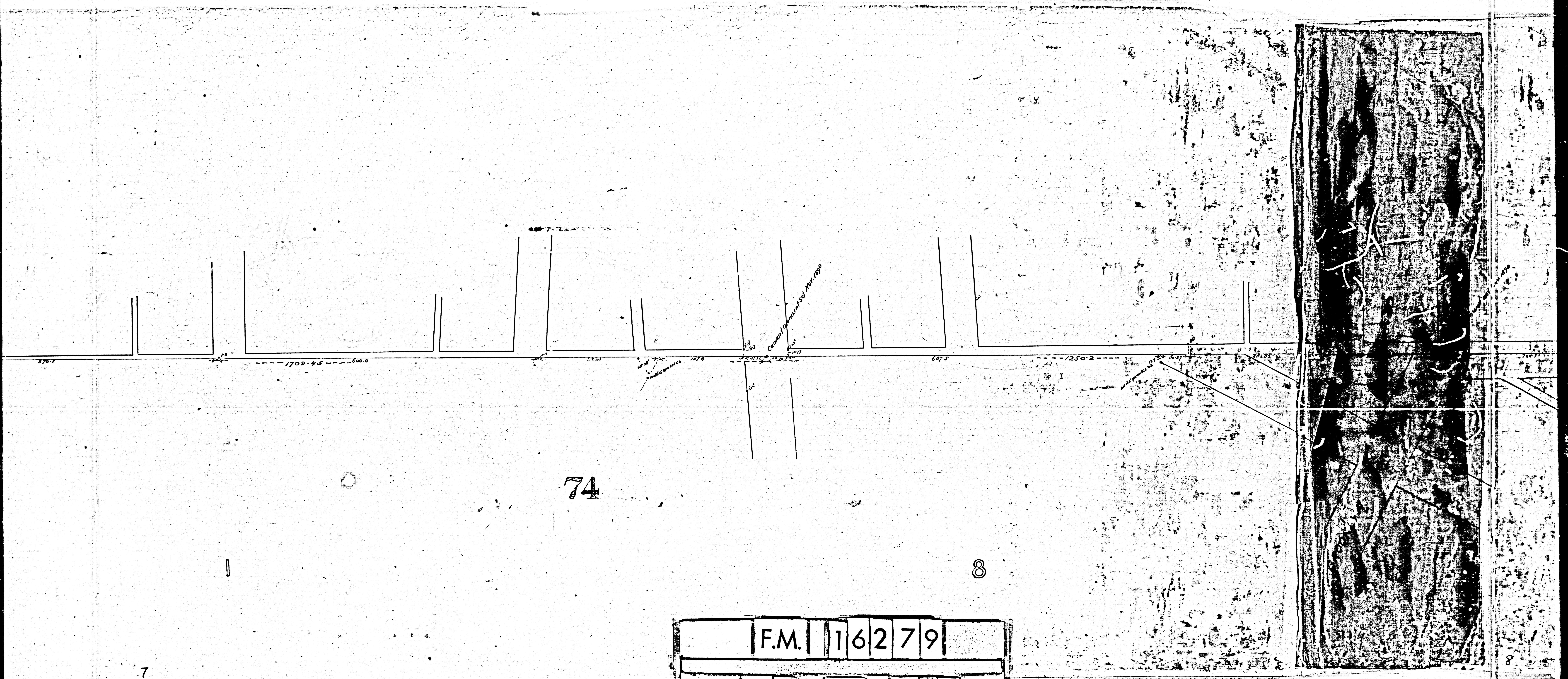
75

7

WABASH
AV.

	F.M.	1	6	2	7	9	
	A	7		OF		A	11

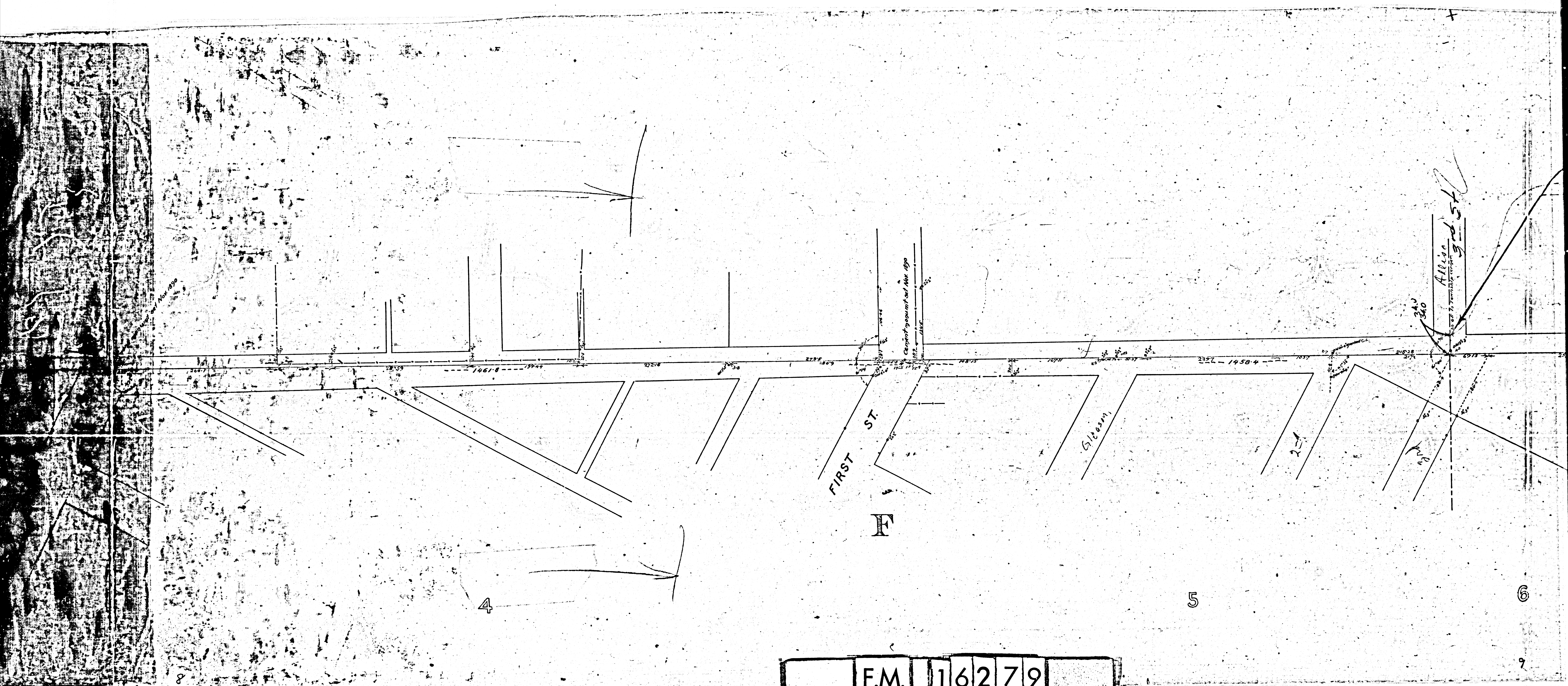
7



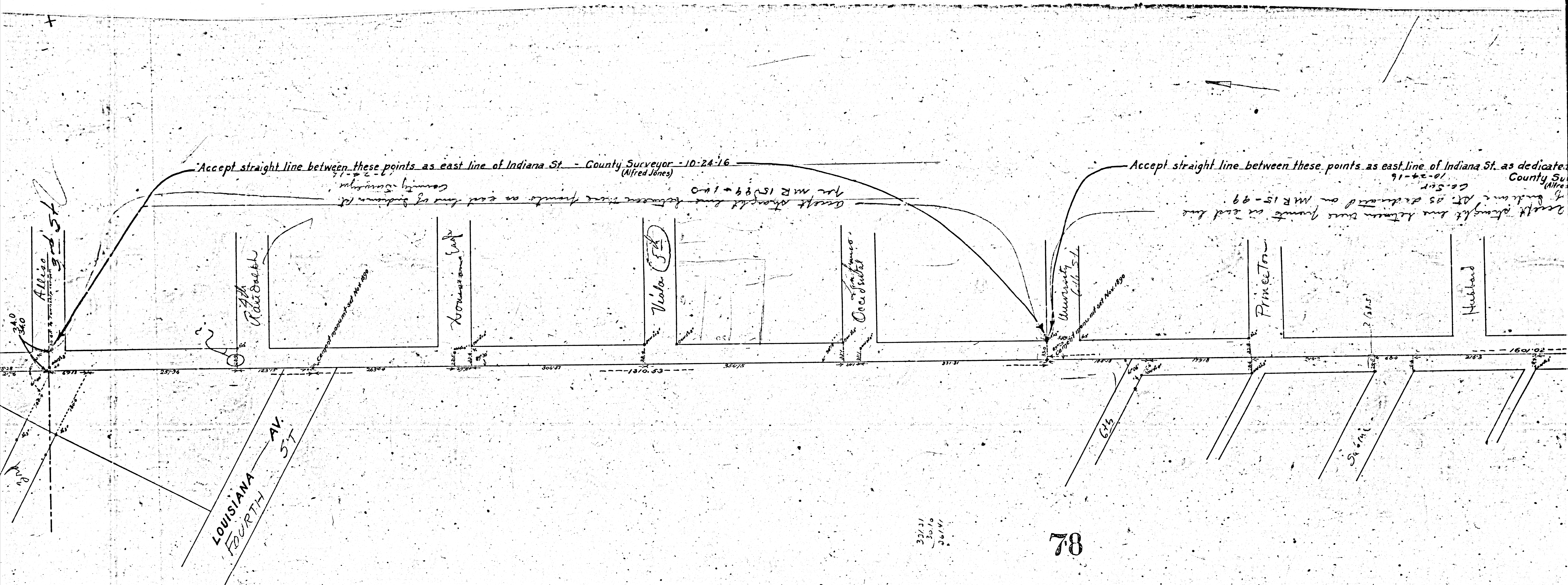
F.M. 16279
A 8 OF A 11

7

8



F.M.	1	6	2	7	9
A	9	OF	A	11	



F.M. 16279
 A 10 OF A 11

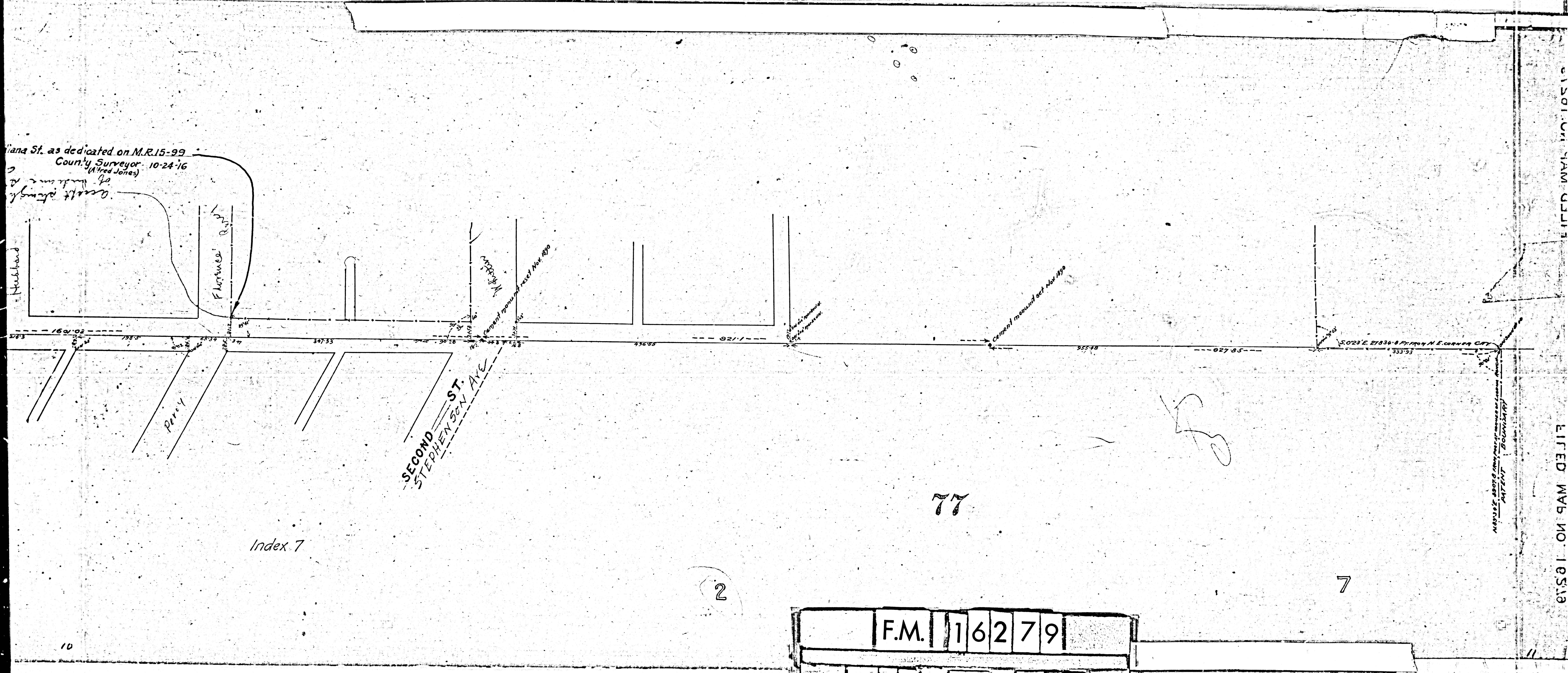
6
 9

3

6

10

Liana St. as dedicated on M.R.15-99
County Surveyor. 10-24-16
(Alfred Jones)
Scott & Sons
of Houston, Tex.



Index 7

77

2

7

FILED MAP NO. 10518

F.M.	1	6	2	7	9
A	1	1	OF	A	1