

FILED MAP NO. 16282
(Fmly. C.S. 6282)

F.M. 16282
A1 OF A2

STEARNS RO. FROM
CAPT. HEALY'S MAP,
NEG. 93

THIS PRINT WAS MADE FROM NEGATIVE 93
Note:
Neg. 93 was made from a retracing of C.S. 6282
and the retracing since discarded due to
excessive wear. A brown line from Neg. 93,
and the original tracing of C.S. 6282 are
filed in the County Engineers Pacoima Vault
as F.M. 16282. NEG. 93 is filed in the B.P.

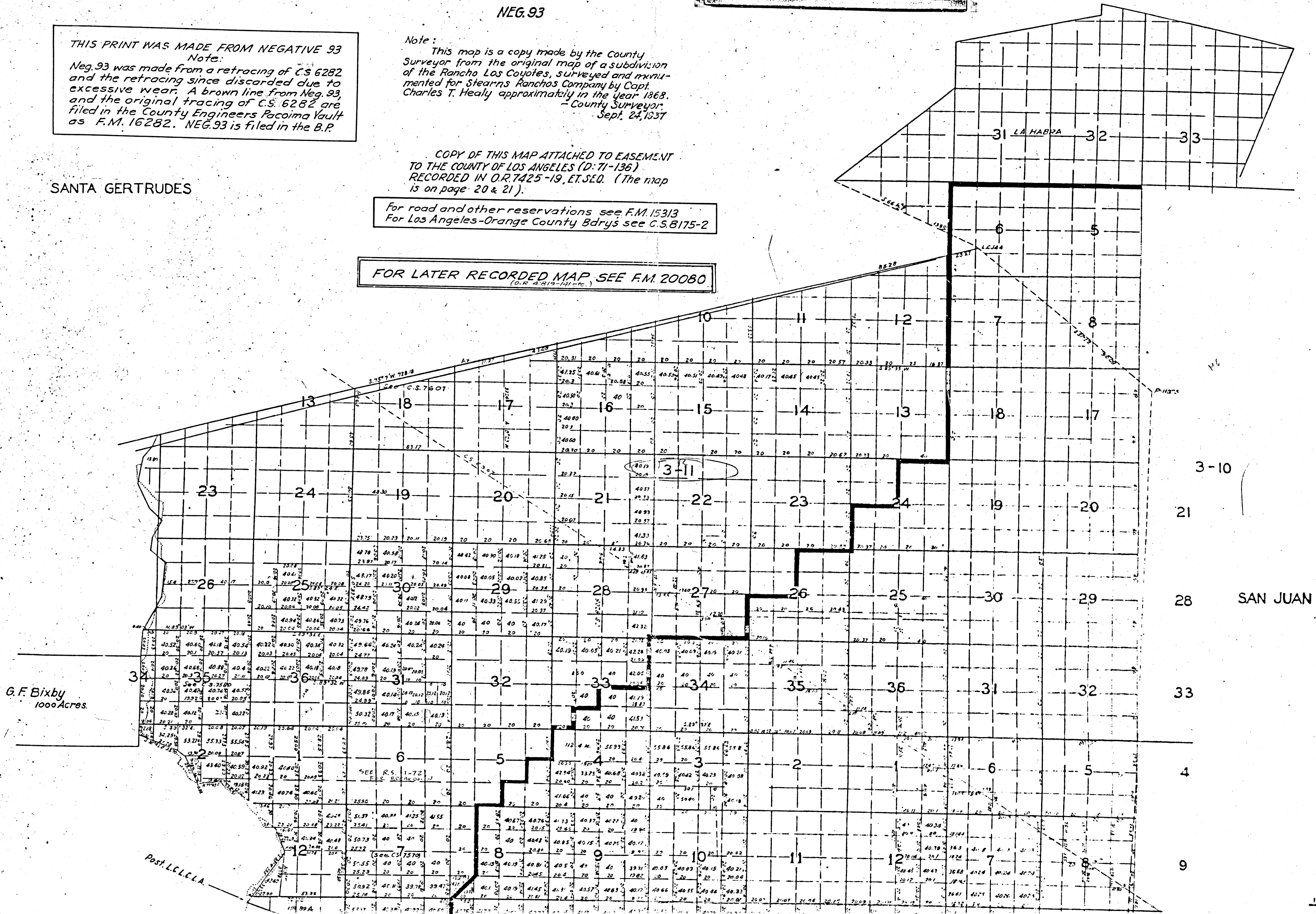
Note:
This map is a copy made by the County
Surveyor from the original map of a subdivision
of the Rancho Los Coyotes, surveyed and monu-
mented for Stearns Ranchos Company by Capt.
Charles T. Healy approximately in the year 1868.
- County Surveyor
Sept. 24, 1937

COPY OF THIS MAP ATTACHED TO EASEMENT
TO THE COUNTY OF LOS ANGELES (D: 71-136)
RECORDED IN O.R. 7425-19, ET. SEQ. (The map
is on page 20 & 21).

SANTA GERTRUDES

For road and other reservations see F.M. 15313
For Los Angeles-Orange County Bdry's see C.S. 8175-2

FOR LATER RECORDED MAP SEE F.M. 20080
(O.R. 4815-H.M.C.)

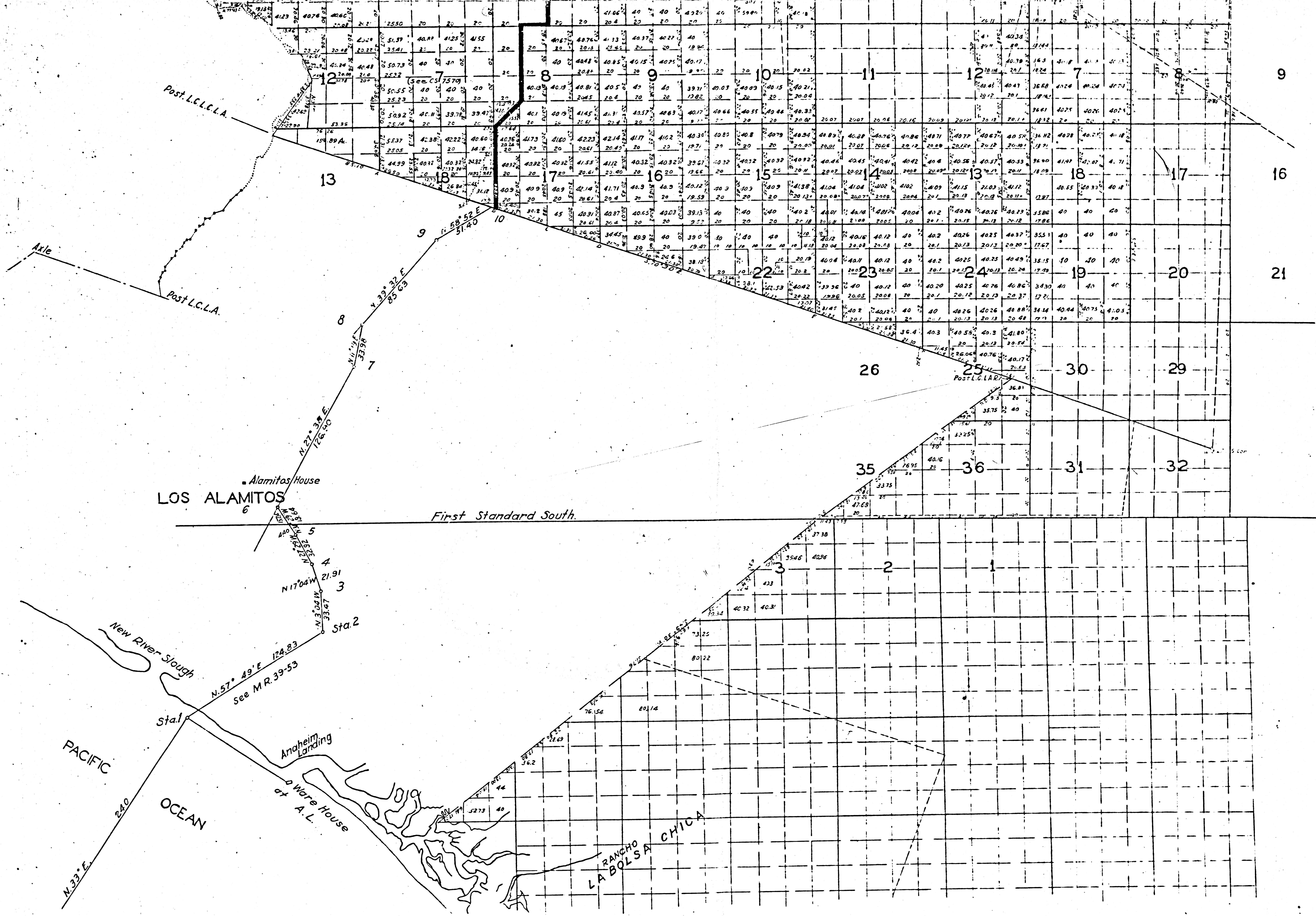


G.F. Bixby
1000 Acres.

Post. L.C.L.C.A.

SAN JUAN

3-11



F.M. 16282
 A2 OF A2

RANCHO LOS COYOTES