

T.1 S.R.12W.
T.2 S.R.12W.

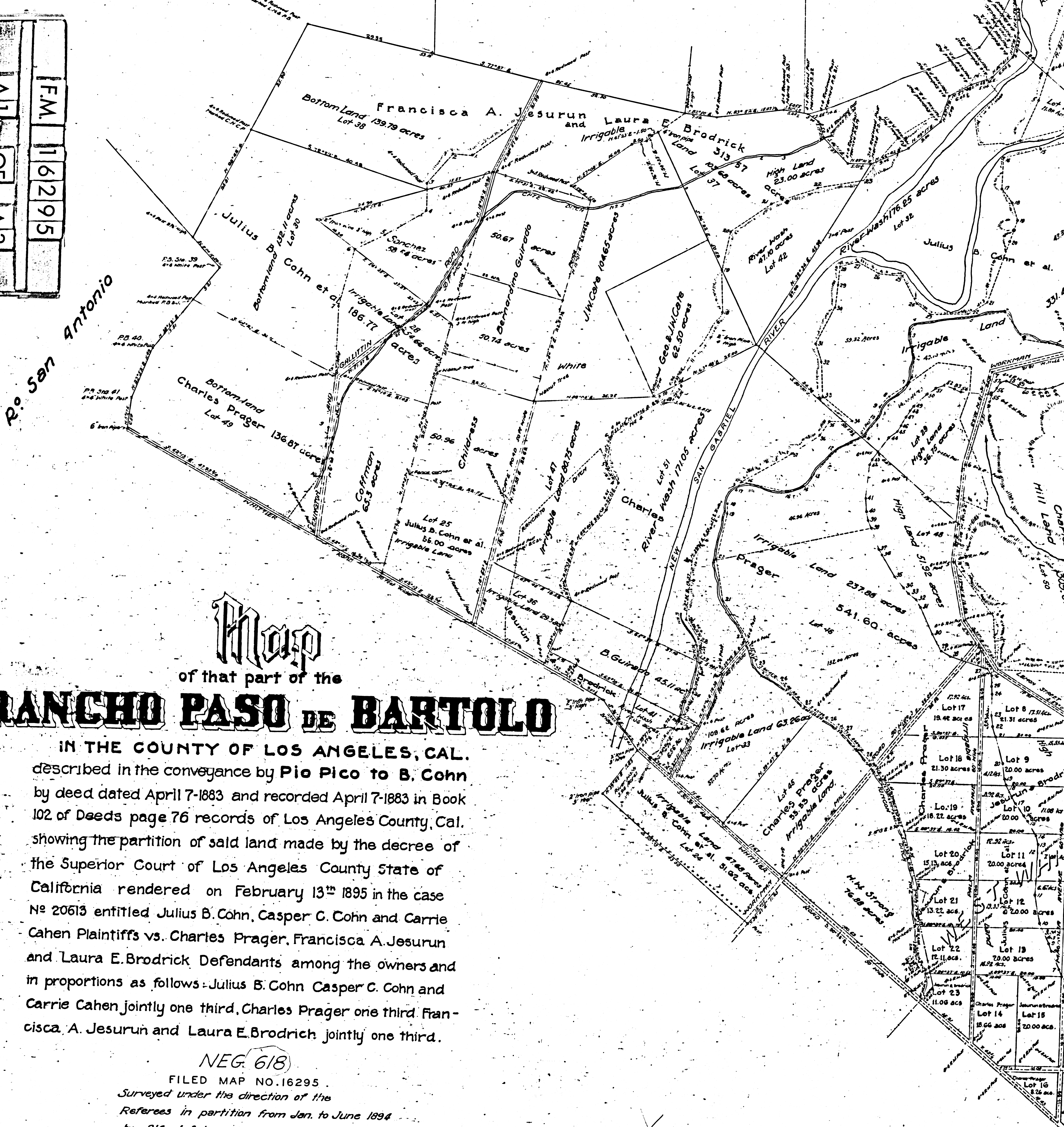
T.1S.R.11W.
T.2S.R.11W.

Sec.1

Rancho La Merced

Sec. 5.

F.M. 16295
ALL OF A3



Map

of that part of the

RANCHO PASO DE BARTOLO

IN THE COUNTY OF LOS ANGELES, CAL.
described in the conveyance by Pio Pico to B. Cohn
by deed dated April 7-1883 and recorded April 7-1883 in Book
102 of Deeds page 76 records of Los Angeles County, Cal.
showing the partition of said land made by the decree of
the Superior Court of Los Angeles County State of
California rendered on February 13th 1895 in the case
No 20613 entitled Julius B. Cohn, Casper C. Cohn and Carrie
Cahen Plaintiffs vs. Charles Prager, Francisca A. Jesurun
and Laura E. Brodrick Defendants among the owners and
in proportions as follows: Julius B. Cohn Casper C. Cohn and
Carrie Cahen jointly one third, Charles Prager one third, Fran-
cisca A. Jesurun and Laura E. Brodrick jointly one third.

NEG. 618

FILED MAP NO. 16295

Surveyed under the direction of the

Referees in partition from Jan. to June 1894

by Alfred Solano Licensed Land Surveyor

Index 36, 37

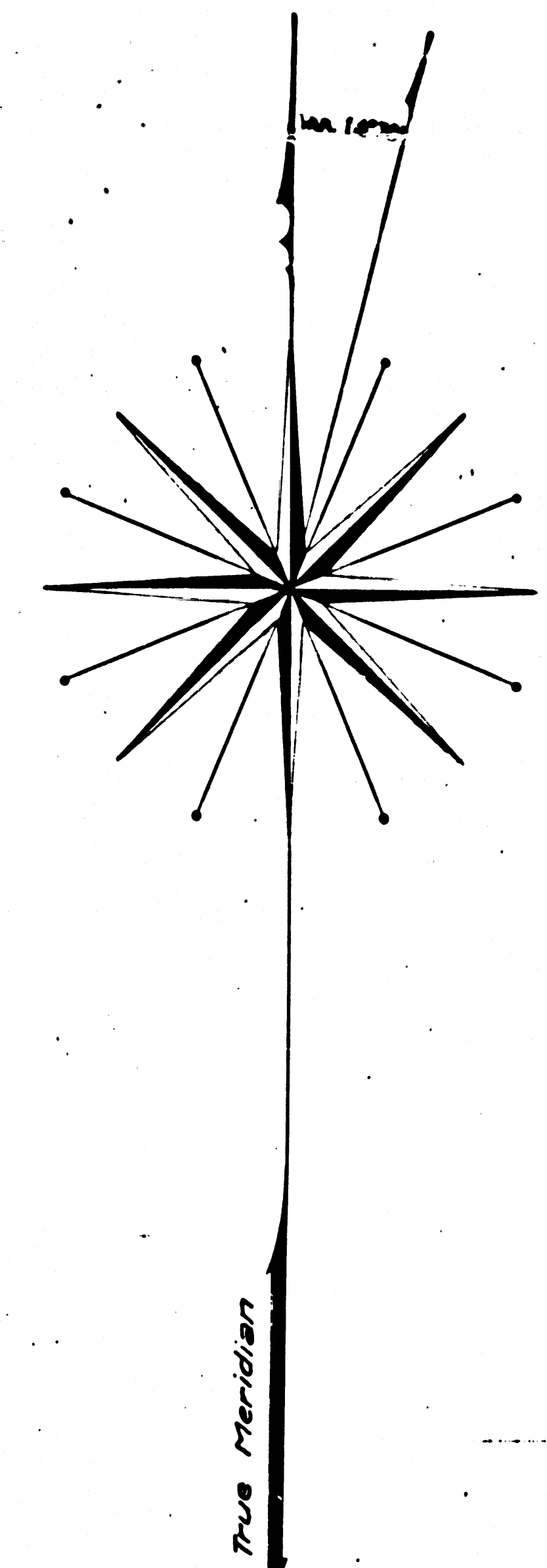
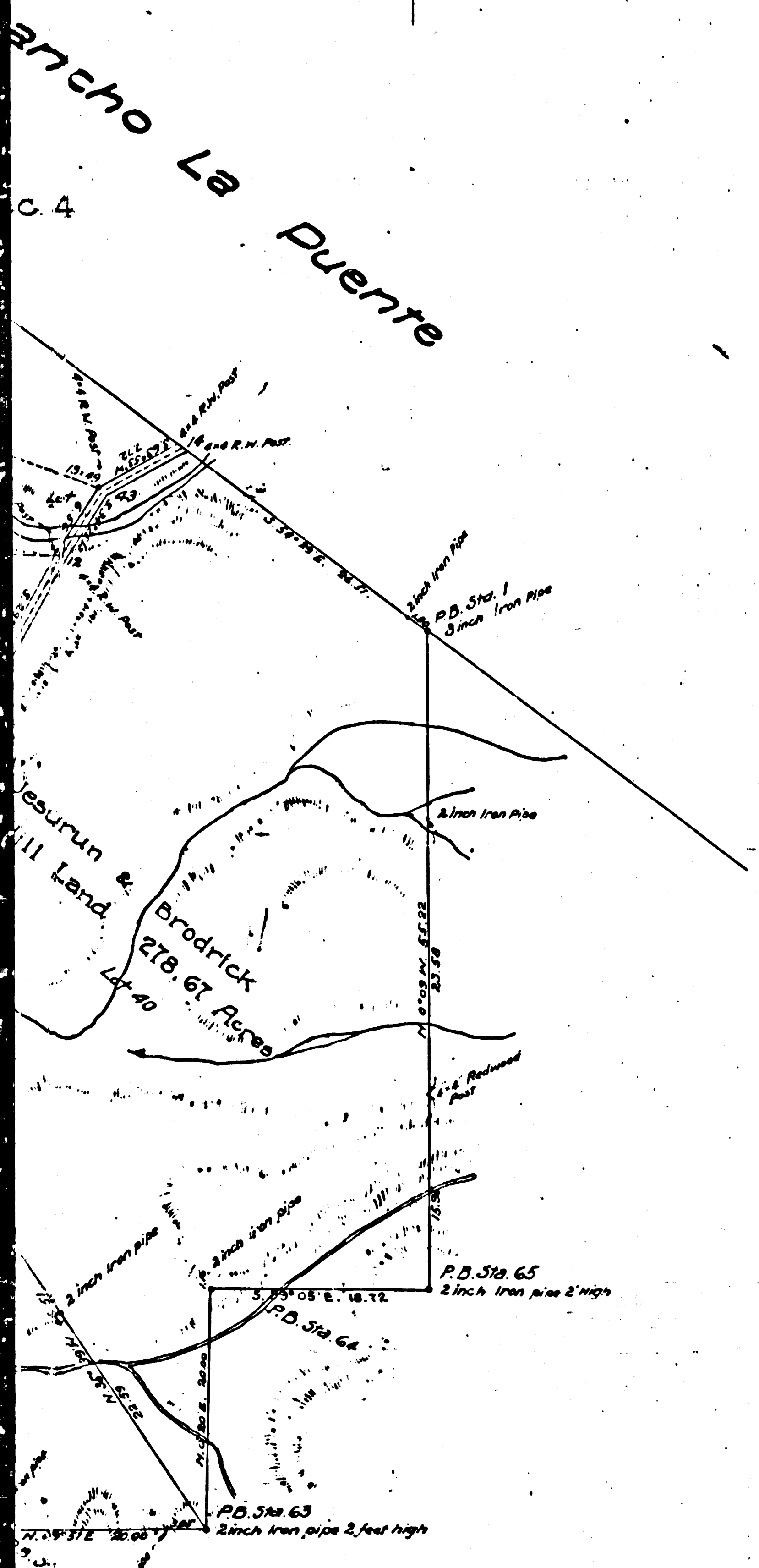
True Courses - Variation 14° 30' East

Scale 1 Inch to 10 chains

See

D.M. 999-81 to 93; F.M. 12083; F.M. 12307; F.M. 16168; C.F. 25; C.F. 54.

Traced by K. Leno
Checked by C.E. Hutton



F.M. 16295
 A3 OF A3

Names	Interest	Irrigable Land	High Land	Bottomland	Hill Land	River Wash	Total
Jesurun & Brodrick	1/3	600.81 Acres	84.84 Acres	182.38 Acres	278.67 Acres	192.62 Acres	1339.32 Acres
Julius B. Cohn et al,	1/3	570.52	119.00	132.11	279.30	180.19	1281.12
Charles Prager	1/3	458.52	93.59	136.87	309.67	171.05	1169.70
Total		1629.85	297.43	451.36	867.64	543.86	3790.14

Jesurun and Brodrick										Julius B. Cohn Et Al										Charles Prager									
ST	Courses	Dist	Irrigable Land	Irrigable Land	Hill Land	ST	Courses	Dist	Irrigable Land	Irrigable Land	Hill Land	ST	Courses	Dist	Irrigable Land	Irrigable Land	Hill Land	ST	Courses	Dist	Irrigable Land	Irrigable Land	Hill Land						
1	S 89° 14' E	18.11	Opposite North Place	18.11	18.11	1	S 89° 14' E	18.11	18.11	18.11	1	S 89° 14' E	18.11	18.11	18.11	18.11	18.11	1	S 89° 14' E	18.11	18.11	18.11	18.11						