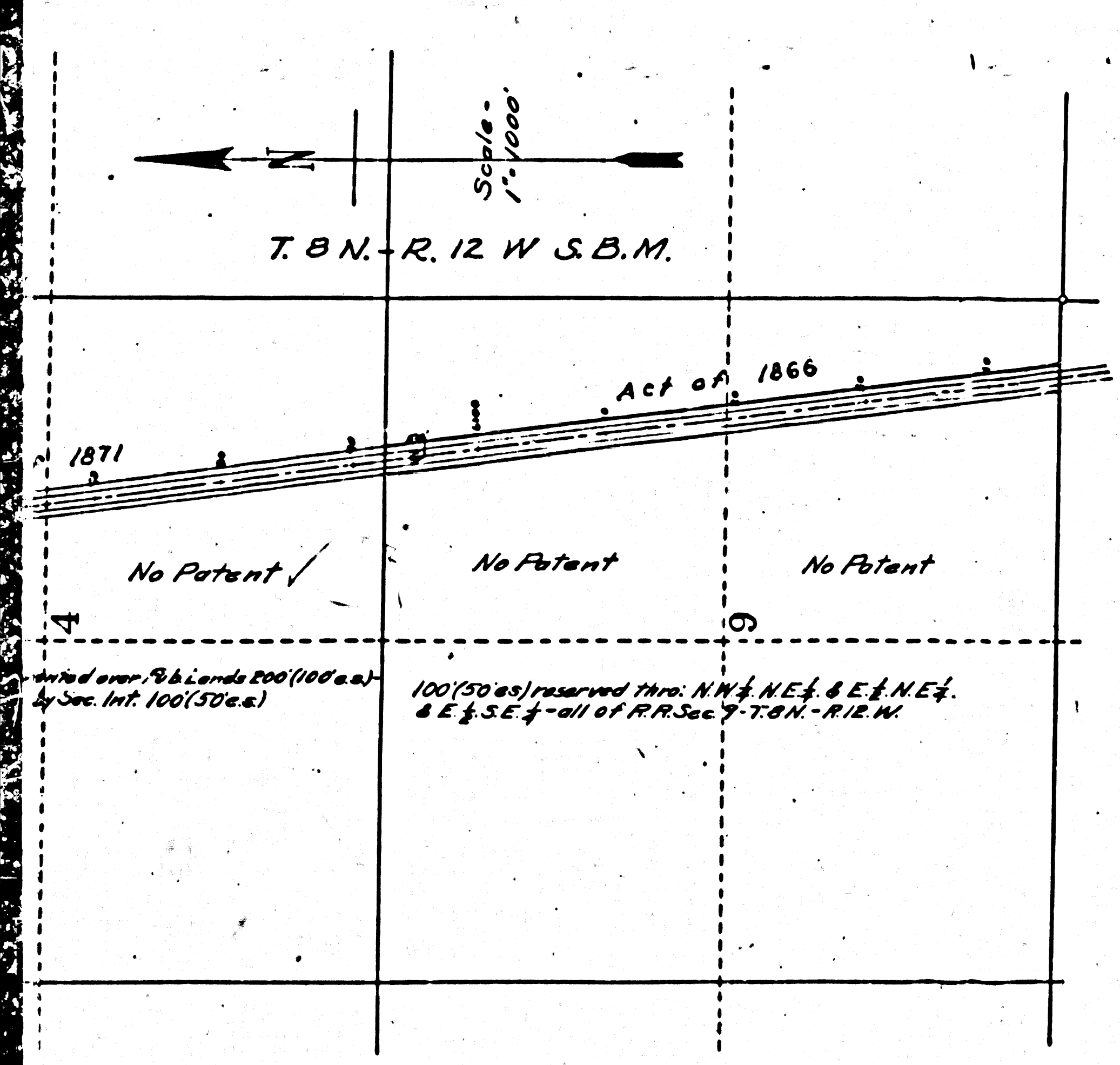
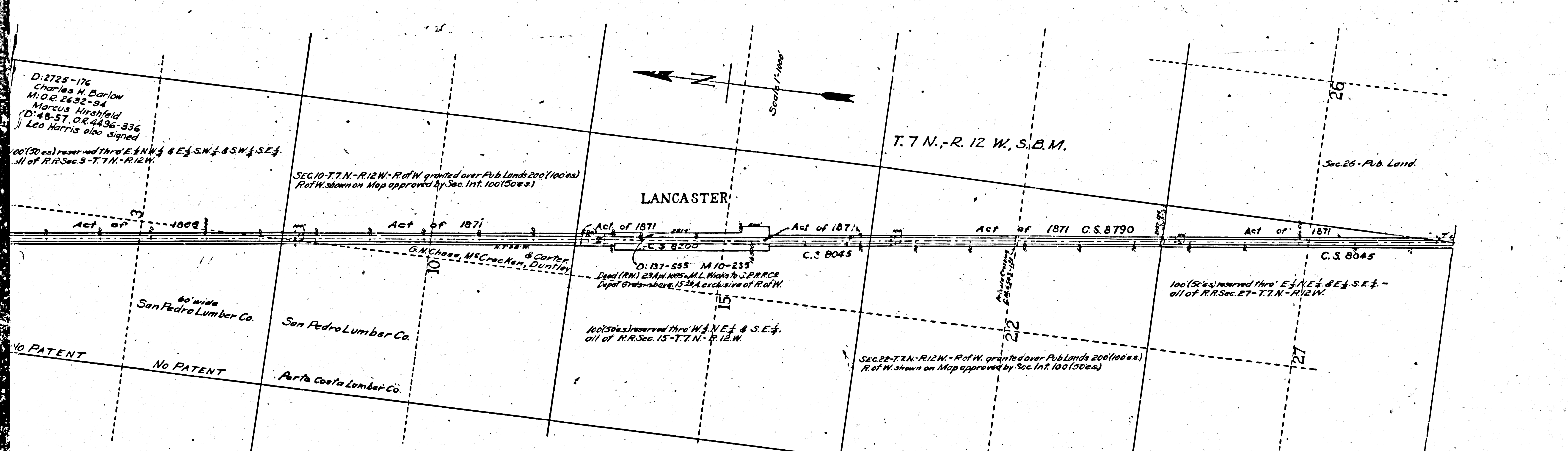
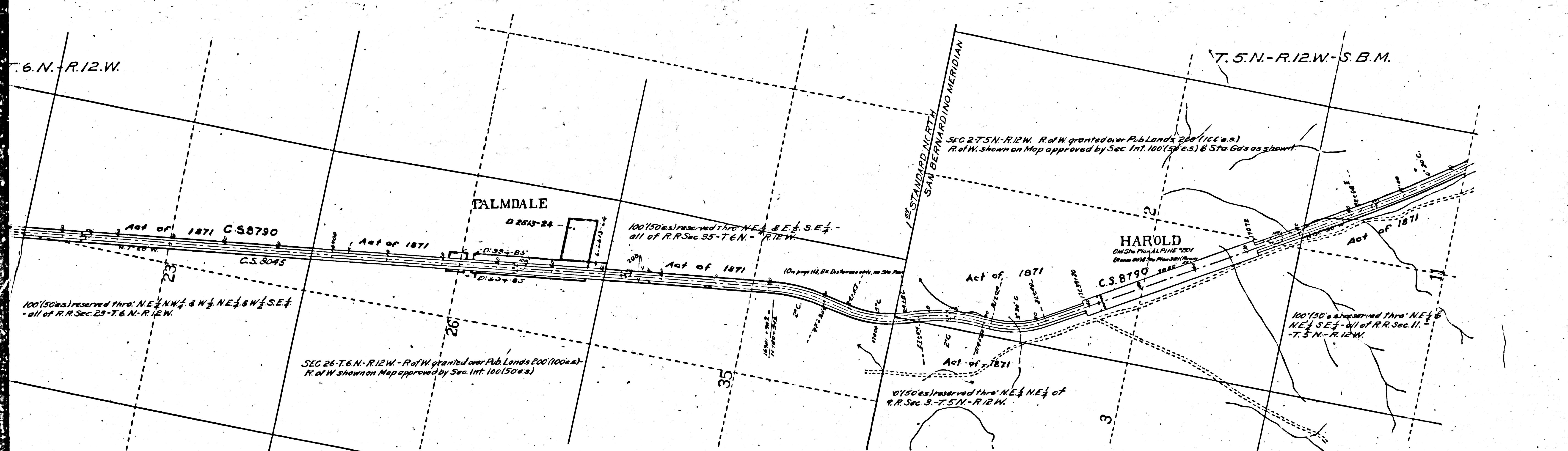
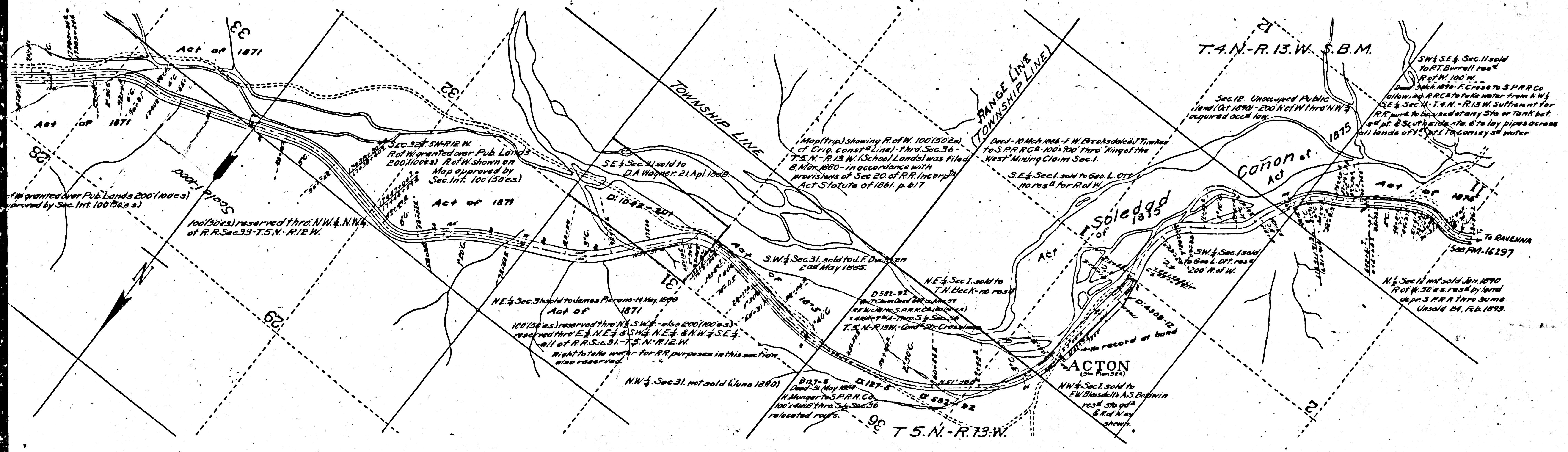


Lines colored red show additional lands claimed by S.P.R.R. Company as shown on maps filed by them with Interstate Commerce Commission. Right of way acquired by Act of Congress of July 27, 1866 or by Act of Congress of March 3, 1875 or by Railroad Incorporation Act (of State of Cal) of May 20, 1861 is indicated in even section by red note or Act of Congress of March 3, 1875. Deeds from private parties are also shown in red.

FM 116296
A 1 OF A 2

MERN CO
LOS ANGELES CO
COUNTY LINE
TOWNSHIP LINE



SOUTHERN PACIFIC RAILROAD
 FROM
 ROSAMOND
~~MOJAVE~~ TO RAVENNA
 T. 9 N., R. 12 W. TO T. 4 N., R. 13 W.
 SURVEYED BY S. P. R. R. CO.
 SCALE: 1 INCH = 1000 FT.

FILED MAP NO. 16296

TRACED IN COUNTY SURVEYOR'S OFFICE
 FROM BLUE PRINT FURNISHED BY S. P. R. R. CO.

IM. 64
 IM. 65
 IM. 70

This Photact Reproduction made Nov. 1937

FM. 116296
 A 2 OF A 2

Lines colored red show additional lands claimed by S. P. R. R. Company as shown on maps filed by them with Interstate Commerce Commission.
 Right of Way acquired by Act of Congress of July 27, 1866, or Act of Congress of March 3, 1871, or Act of Congress of March 3, 1875, or by Railroad Incorporation Act (of State of Calif.) of May 20, 1861, is indicated in each Section by notes shown in red.
 Deeds from private parties are also shown in red.