

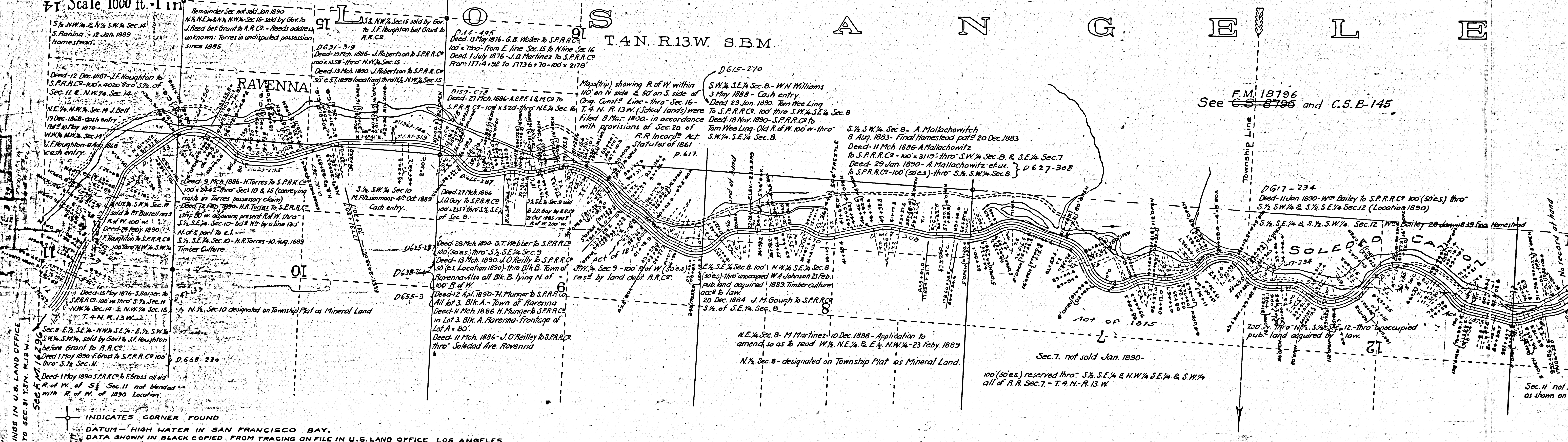
NEG. No 31

Scale 1000 ft. = 1 in.

T.4N. R.13W. S.B.M.

LOS ANGELES

F.M. 18796  
See C.S. 8796 and C.S.B-145



This map is a print of tracing made by City Engineer (L.A.G.) Office from map furnished by S.P.R.R. Co.

Lines colored red show additional land claimed by S.P.R.R. company as shown on maps filed by them with Interstate Commerce Commission, right of way acquired by Act of Congress of July 27, 1866 or by Act of Congress of March 3, 1871, or by Railroad Incorporation Act (of State of Cal.) of May 20, 1861 is indicated in each section by red note. Deeds from private parties are also shown in red.

F.M.	16297
A1	OF A10



E S

T. 4 N. R. 14 W. S.B.M.

C O

O

Y

Scale 1000 ft. - lin.

L O  
T. 4 N. R. 14 W. S.B.M.

S.E. 1/4 Sec. 24 - S.H.D. Homestead

15

14

100 (50 a.s.) reserved thro' N.W. 1/4, N.E. 1/4, & N. 1/2 N.W. 1/4 & S.W. 1/4 N.W. 1/4 all of R.R. Sec. 15 T. 4 N. R. 14 W.

Sec. 15 not sold Jan. 1890  
R. of W. 200 w. thro' S.E. 1/4 Sec. 10. unoccupied Pub. Land acquired acc't to Law

P.R.R.C. 100 (50 a.s.) thro' Loc. 100 (1890)

RUSS

Act of 1871

S. 1/2, N.E. 1/4, N. 1/2, N.W. 1/4, & S.E. 1/4 of N.W. 1/4 Sec. 16 - J.J. Schneider  
19 Aug. 1887 - Certificate of patent 12 Apl. 1888

S. 1/2, N. 1/2 Sec. 17 owned by J. Lang  
bef. R.R. was built (Homesteaded) July 1880 - Pat. issued 1 Feb. 1882

Map trip showing R. of W. 100' (50 a.s.) thro' Sec. 16 - T. 4 N. R. 14 W. (School Lands) - were filed 8 Mar. 1880 in accordance with provisions of Sec. 20 of R.R. Incorporat. Act Statutes of 1861 p. 617

D673-254  
Decd. 28 July 1889 - J.F. Blunt et ux. to S.P.R.R.C. Water right 2 1/2 in. Santa Clara River in S.W. 1/4 of N.E. 1/4 Sec. 16 & S. 1/2 N.E. 1/4 Sec. 17 T. 4 N. R. 14 W.

NOTE: No Deed for extra Sta. Gd's of LANG

100 (50 a.s.) reserved thro' N.W. 1/4 S.W. 1/4 of R.R. Sec. 17 - T. 4 N. R. 14 W.

D650-145

Decd. 25 Apl. 1890 - H.A. Steele to S.P.R.R.C. thro' S. 1/2 N.W. 1/4 Sec. 17 - from S. line s4 S. 1/2 to S. base old R. of W. (along Loc. 1890)

LANG

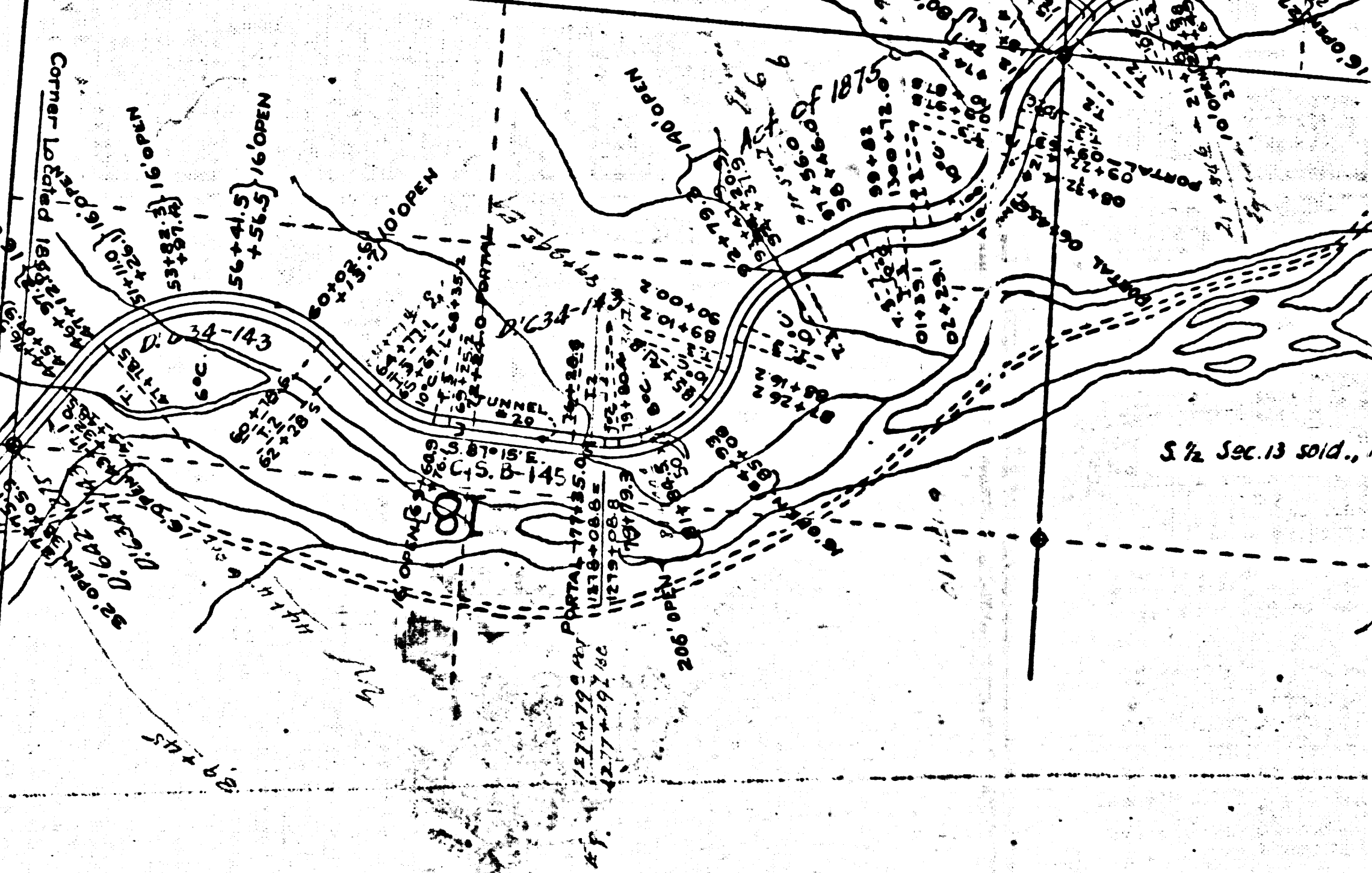
Sec. 11 not sold Jan 1890 - R. of W. & Sta. Gd's will be res'd as shown on Map, by land dept. S.P.R.R.C. when the Sec. is sold

100 (50 a.s.) reserved thro' N.W. 1/4 N.W. 1/4 of R.R. Sec. 19 T. 4 N. R. 14 W.

61  
Sec. 19 R.R. Land unsold 3 Oct. 1890  
R. of W. 200 w. thro' S. 1/2 S.W. 1/4 Sec. 18 thro' unoccupied Pub. Land acquired according to Law  
(Deed - 13 Feb. 1890 - C.H. Clayton et ux. to S.P.R.R.C. - 100 (50 a.s.) thro' N. 1/2 S. 1/2 Sec. 18 - Loc. 1890 -  
N. 1/2 S.W. 1/4 & N. 1/2 S.E. 1/4 Sec. 18 C.H. Clayton 16 May 1890 - Homestead  
(Deed - 24 Apl. 1890 - C.A. Steele to S.P.R.R.C. - por. N.E. 1/4 Sec. 18 cut off by R. of W. line 50' W. of c.t. Location 1890. (a small a)  
(C.A.S. does not now own N.E. 1/4 but holds agreement to buy)  
S. 1/2 N.E. 1/4 & S. 1/2 N.W. 1/4 Sec. 18 - J. Lang - 10 Aug. 1889

D634-143

D642-276

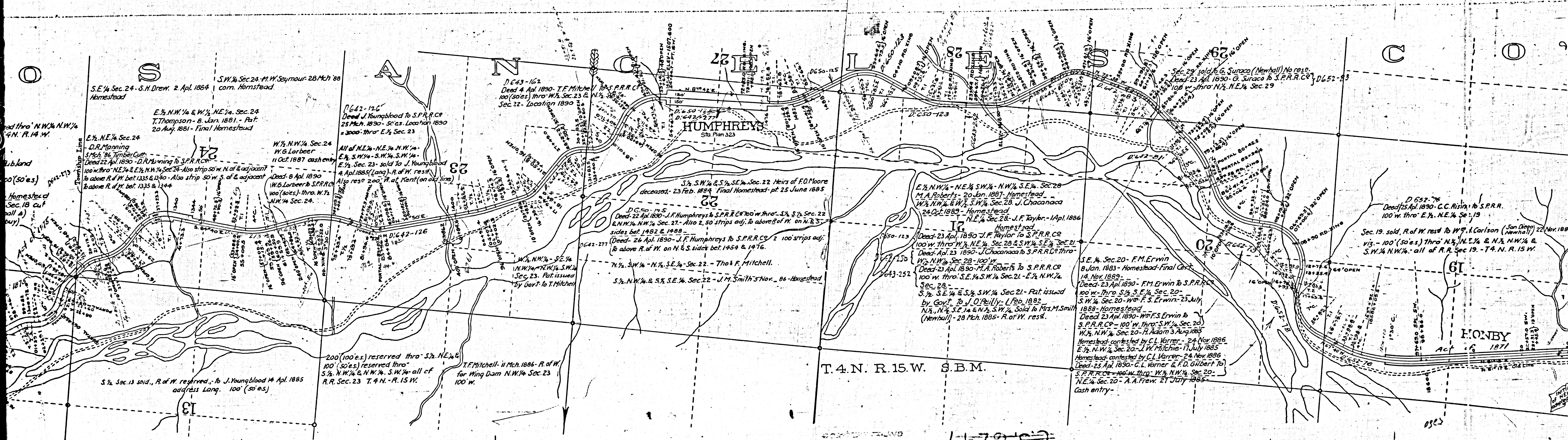


F.M. 16297  
A2 OF A10



NEG 31 (Part 4)

NEG 31 (Part 3)



INDICATES CORNER FOUND  
 DATUM - HIGH WATER IN SAN FRANCISCO BAY  
 DATA SHOWN IN BLACK COPIED FROM TRACING ON FILE  
 IN U.S. LAND OFFICE, LOS ANGELES

T. 4 N. R. 15 W. S. B. M.

NEG 31 (Part 4)

NEG 31 (Part 3)

F.M.	16297
A3	OF A10

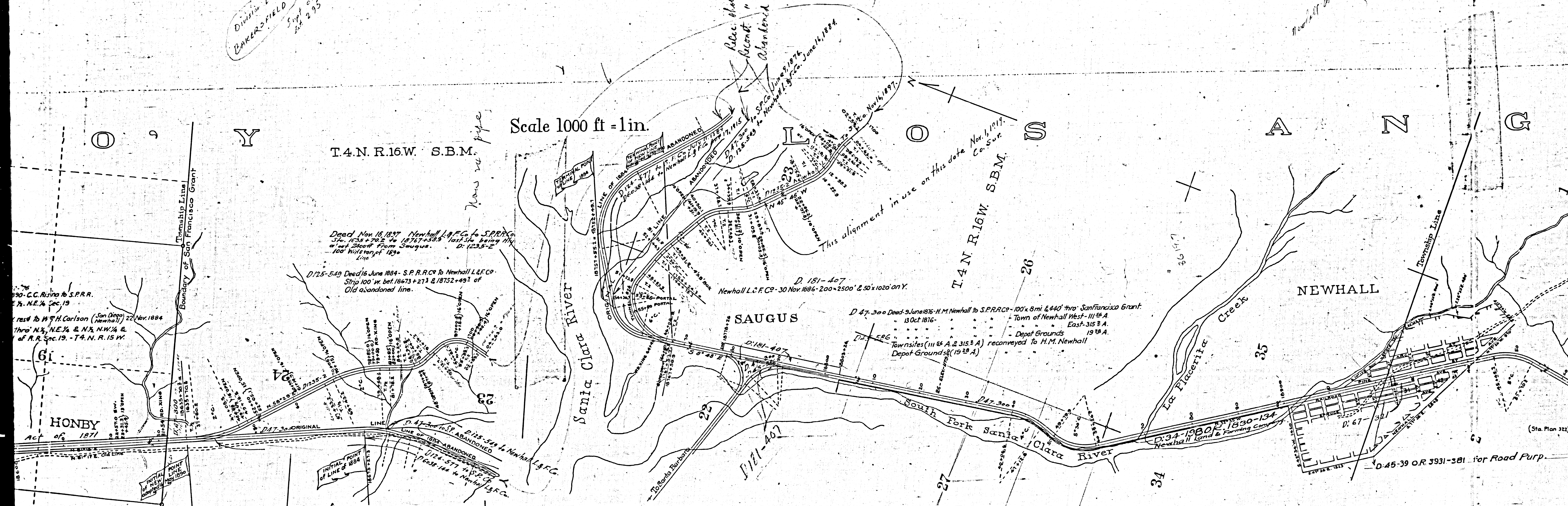


Division Engineer  
BAKERSFIELD  
Supt. Office  
No. 295

Scale 1000 ft = 1 in.

T.4.N.R.16.W. S.B.M.

T.4.N.R.16.W. S.B.M.



1890 C.C. Risto to S.P.R.R.  
7 1/2 N.E. 1/4 Sec. 19  
res'd to H. H. Carlson (San Diego) 22 Nov. 1884  
thro' N.E. 1/4 & N.W. 1/4 &  
of R.R. Sec. 19 - T.4.N.R. 15 W.

Deed Nov. 15, 1897 Newhall L & F Co. to S.P.R.R.  
Sts. 1635+70.2 to 18767+38.9 last Sta being NW  
1/4 of 2000' from Saugus. D. 1235-2  
100' Wide of 1890  
line

D. 125-549 Deed June 1884 - S.P.R.R. Co. to Newhall L & F Co.  
Strip 100' w. bet. 18673+273 & 18752+49.7  
of Old abandoned line.

Newhall L & F Co. - 30 Nov. 1886 - 200' x 2500' & 50' x 1020' on Y.

D. 47-300 Deed June 1876 - H.M. Newhall to S.P.R.R. Co. - 100' x 8 mi. & 440' thro' San Francisco Grant  
13 Oct. 1876 - Town of Newhall West - 111 5/8 A.  
East - 315 3/4 A.  
Depot Grounds 19 3/8 A.  
Townships (111 5/8 A. & 315 3/4 A.) reconveyed to H.M. Newhall  
Depot Grounds (19 3/8 A.)

D. 34-1980 1890-194  
Newhall Land & Farming Company

D. 45-39 O.R. 3931-381 for Road Purp

INDICATES CORNER FOUND  
DATUM - HIGH WATER IN SAN FRANCISCO BAY  
DATA SHOWN IN BLACK COPIED FROM TRACING ON FILE IN THE U.S. LAND OFFICE, LOS ANGELES

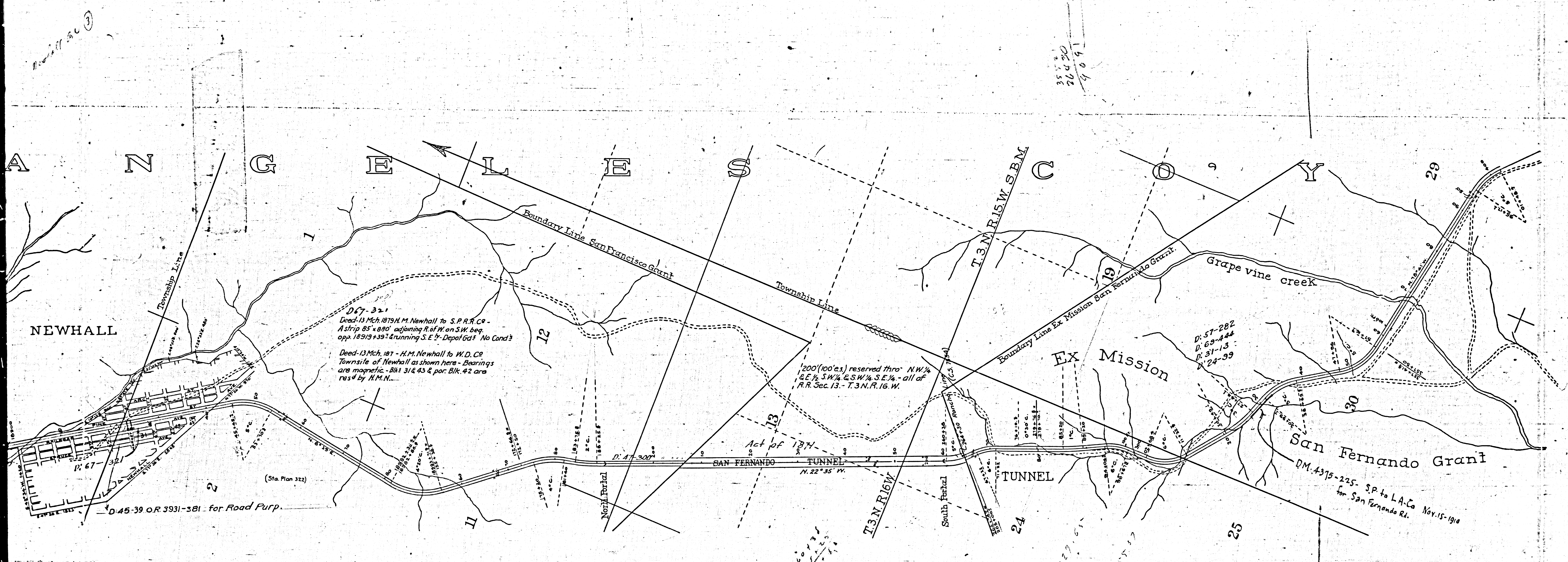
D. 124-577 July 11, 1884  
Newhall L & F Co. to S.P.R.R.  
100' wide - Sta 18673+273 to 18752+49.7  
- Line of 1884 - abandoned 1890

D. 6038-144 - April 17, 1915  
S.P.R.R. to Newhall L & F Co.  
100' wide - All of Line of  
1884 - abandoned 1890

Railroad Ave. changed to San Fernando Road see D. 13-156 R.B. 24-115

F.M.	16297
A 4	OF A 10





A N G E L E S C O U N T Y

NEWHALL

D.C. 321  
 Deed-13 Mch. 1879 H.M. Newhall to S.P.R.R. Co.  
 A strip 85' x 890' adjoining R. of W. on S.W. by  
 app. 18919+3924 running S.E. 1/4 - Depot 60' No Cont.  
 Deed-13 Mch. 1871 - H.M. Newhall to W.D. Co.  
 Townsite of Newhall as shown here - Bearings  
 are magnetic - Blk 31 & 43 & par. Blk. 42 are  
 res'd by H.M.N.

200 (100' es.) reserved thro' N.W. 1/4  
 & E. 1/4 S.W. 1/4 & S.W. 1/4 S.E. 1/4 - all of  
 R.R. Sec. 13 - T.3 N. R. 16 W.

D. 57-282  
 D. 69-444  
 D. 31-13  
 D. 24-39

San Fernando Grant  
 D.M. 4375-225. S.P. to L.A. Co. Nov. 15-1910  
 for San Fernando Rd.

Fernando Road see D. 13-156 R.B. 24-115

D. 35 208  
 D. 85 208  
 4

NEG 31 - (Part 3)

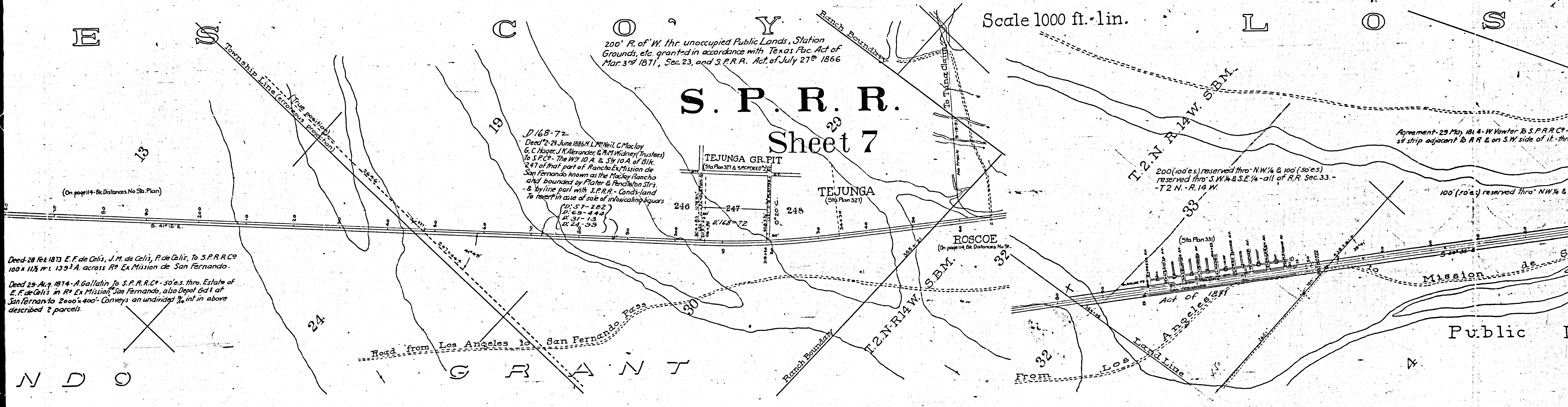
F.M.	1	6	2	9	7
A	5	OF	A	10	

5  
1









E

S

C

O

Y

Scale 1000 ft. - lin.

L

O

S

200' R. of W. thr. unoccupied Public Lands, Station Grounds, etc. grant-d in accordance with Texas Pac. Act of Mar. 3<sup>rd</sup> 1871, Sec. 23, and S.P.R.R. Act. of July 27<sup>th</sup> 1866

**S. P. R. R.**  
Sheet 7

D 168-72  
Deed 2-23 June 1886 H. L. McNeil, C. Macloy  
G. C. Hooper, J. K. Alexander & R. W. McInerney (Trustees)  
to S.P.R.R. - The WY 10 A. & SW 10 A. of B1K.  
247 of that part of Rancho Ex. Mission de  
San Fernando known as the Macloy Rancho  
and bounded by Plater & Pendleton Strs.  
& by line part with S.P.R.R. - Conds: land  
to revert in case of sale of intoxicating liquors

TEJUNGA GR. PIT  
(Sta. Plan 321 & S.P.R.R. 23)

TEJUNGA  
(Sta. Plan 321)

ROSCOE  
(On page 114, Dist. Returns No. 2)

T. 2 N. R. 14 W. S.B.M.

200 (100 a.) reserved thro' NW 1/4 & 100' (50 a.)  
reserved thro' S. W. 1/4 & S.E. 1/4 - all of R.R. Sec. 33 -  
- T. 2 N. - R. 14 W.

Agreement - 29 May 1874 - W. Vanter to S.P.R.R.C. -  
50' strip adjacent to R.R. & on S.W. side of it - thro'

100' (50 a.) reserved thro' NW 1/4 & S

(On page 114 - Bk. Dist. Returns No. 23. Plan)

Deed 28 Feb 1873 E. F. de Celis, J. M. de Celis, P. de Celis, to S.P.R.R.C.  
100 x 112 ft. 139' A. across R<sup>o</sup> Ex. Mission de San Fernando.

Deed 29 Aug 1874 - A. Gallatin to S.P.R.R.C. - 50 a.s. thro' Estate of  
E. F. de Celis in R<sup>o</sup> Ex. Mission San Fernando, also Depot 641 of  
San Fernando to 2000 x 400' - Conveys an undivided 3/4 int in above  
described 2 parcels.

Road from Los Angeles to San Fernando Pass

INGRANT

Act of  
Los Angeles 1871

Mission de San

Public L

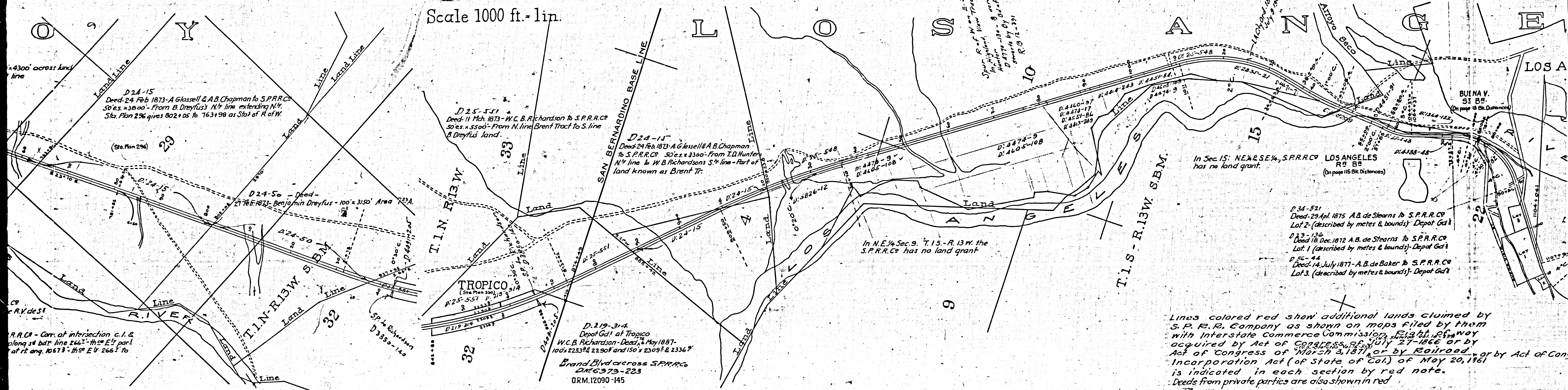
N D O

F.M.	1	6	2	9	7
A	7	OF	A	10	









F.M.	1	6	2	9	7
A	9	OF	A	10	



