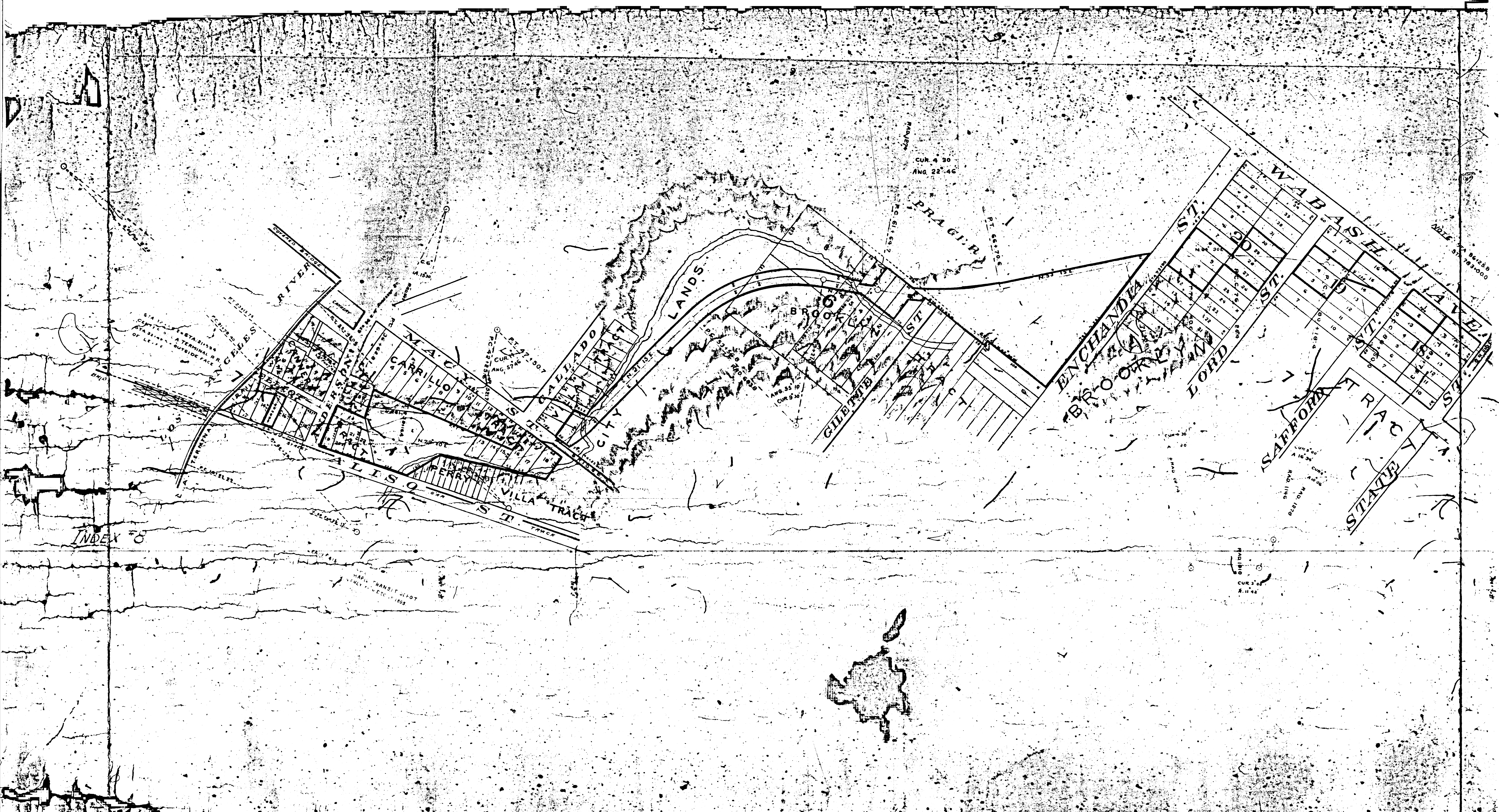


INDEX 8

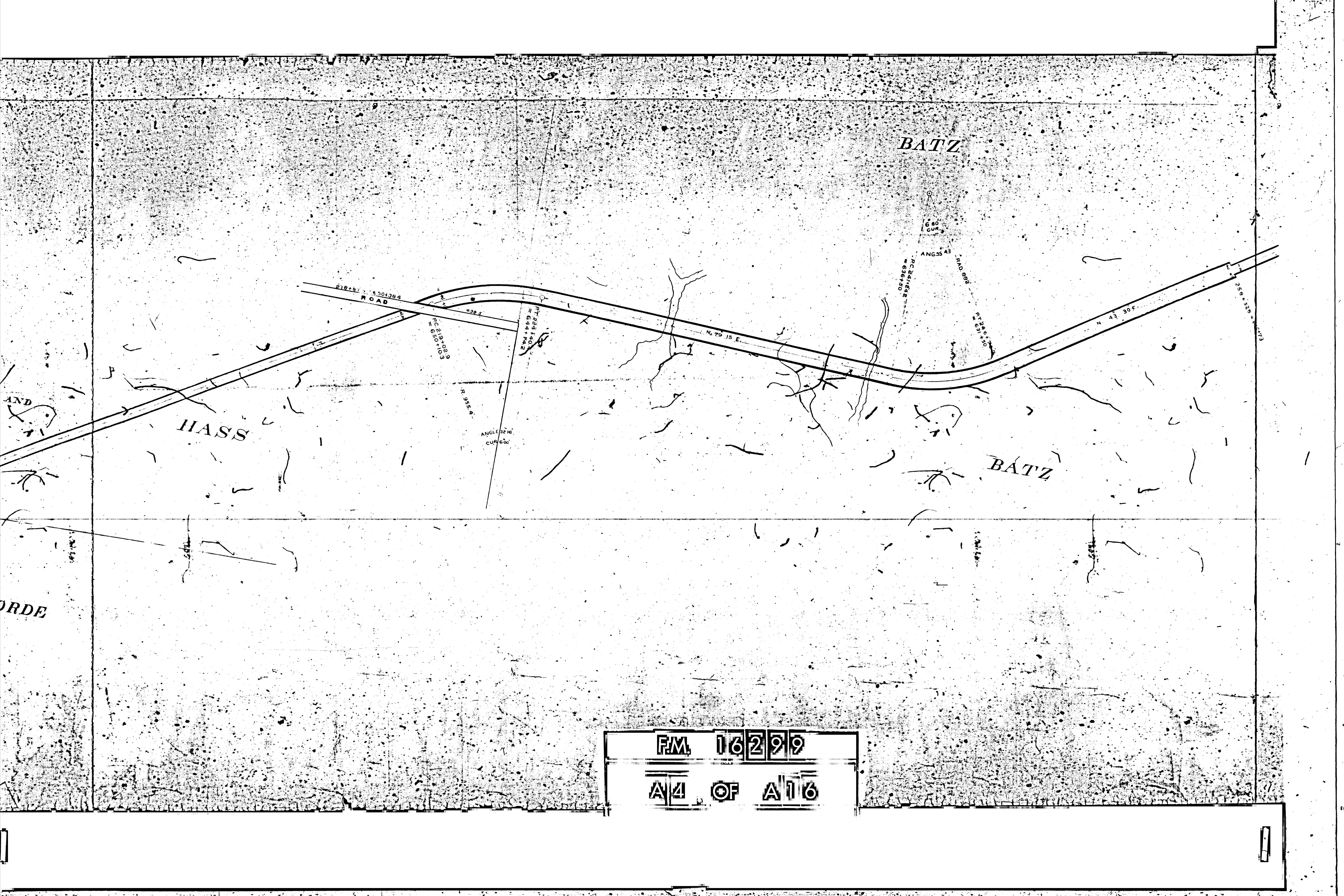
FM 16299
A1 OF A16





FM 16299

A2 OF A16



BATZ

HASS

BATZ

FM 16299

A4 OF A16

218+9.7 50+38.4
ROAD

PC 19+00.3
PT 50+10.3

R. 355.4

ANGLE 32.16
CUR 600

PT 281.100
PC 644.103

N. 79 15 E.

ANG 55.43

PC 241.642
PT 686+50

R. 140.000

PT 816+10

N. 43 30 E.

255+38

AND

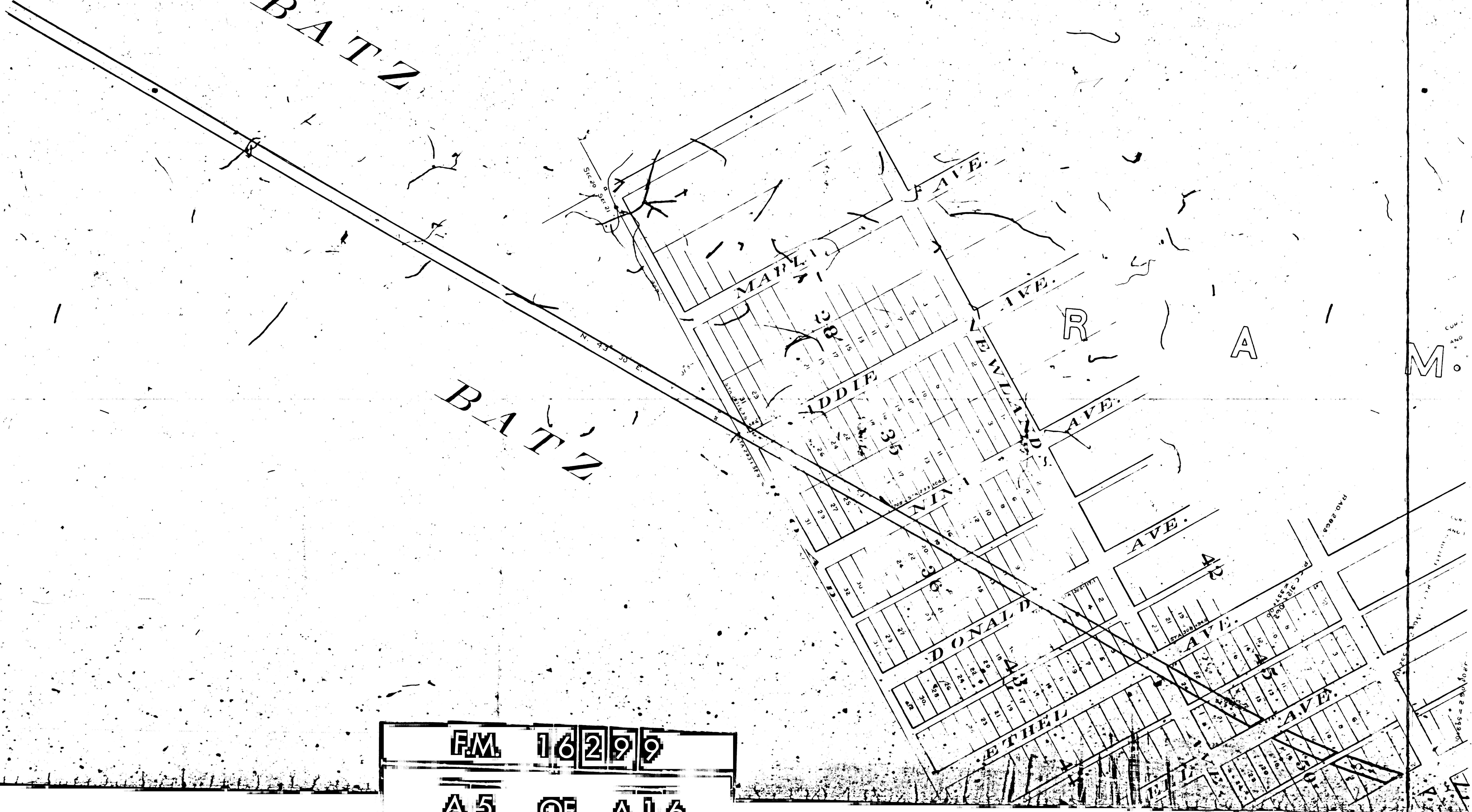
ORDE

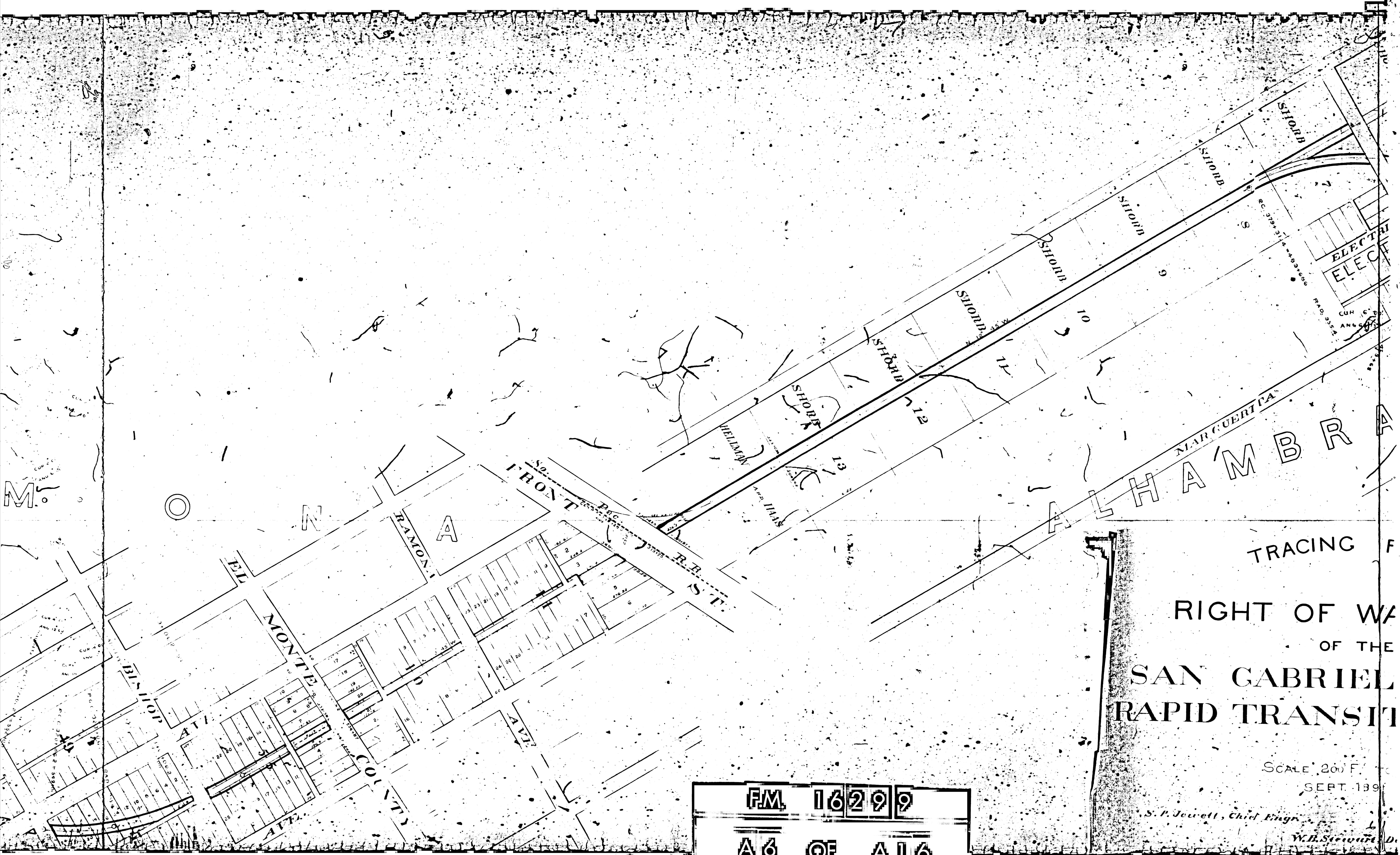
BATZ

BATZ

R A M.

FM 16299
A5 OF A16



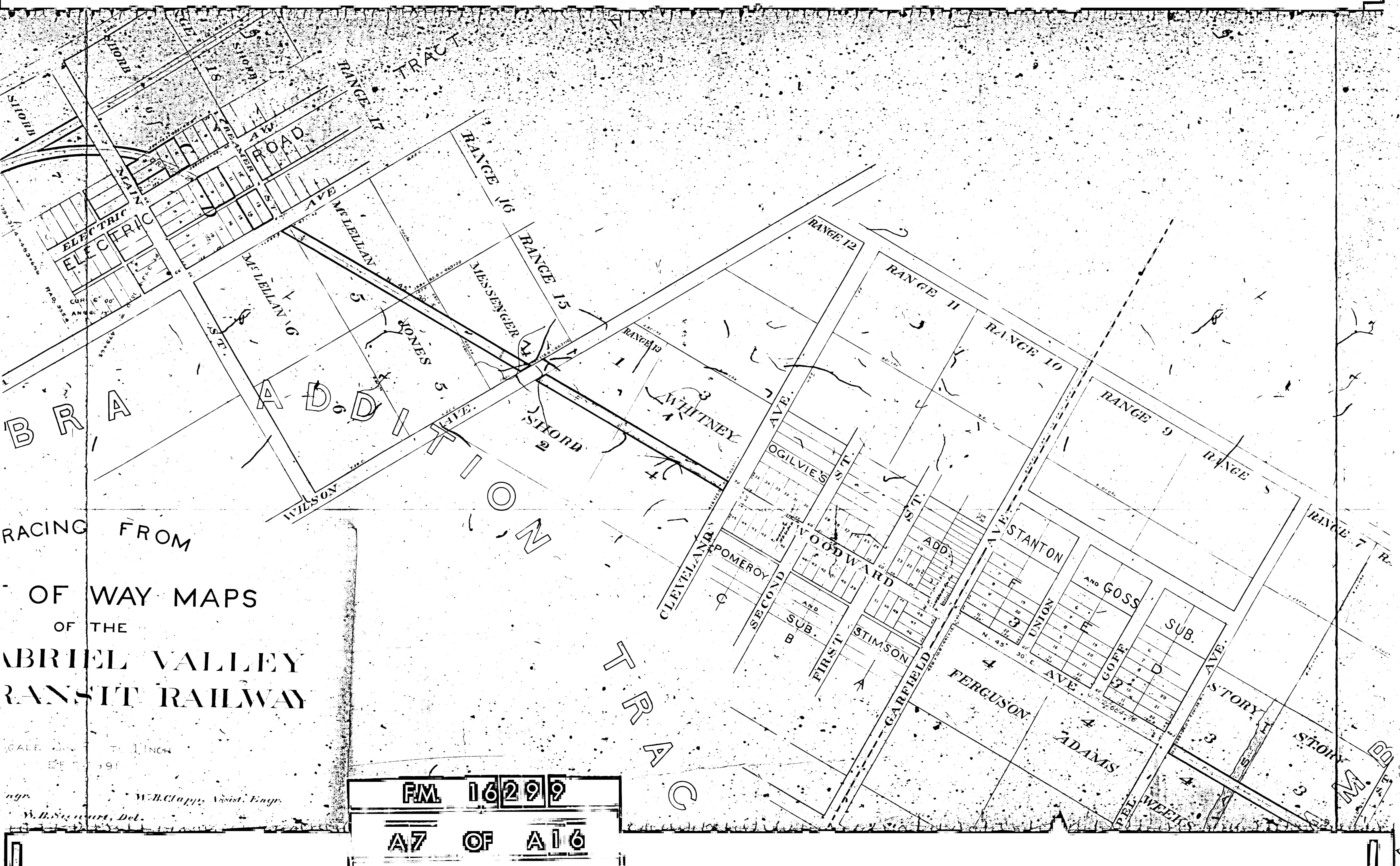


TRACING OF
RIGHT OF WAY
OF THE
SAN GABRIEL
RAPID TRANSIT

SCALE 200 FT. = 1" = 100 FT.
SEPT. 1899

S. P. Jewett, Chief Engineer
W. B. Stewart, D. M. E.

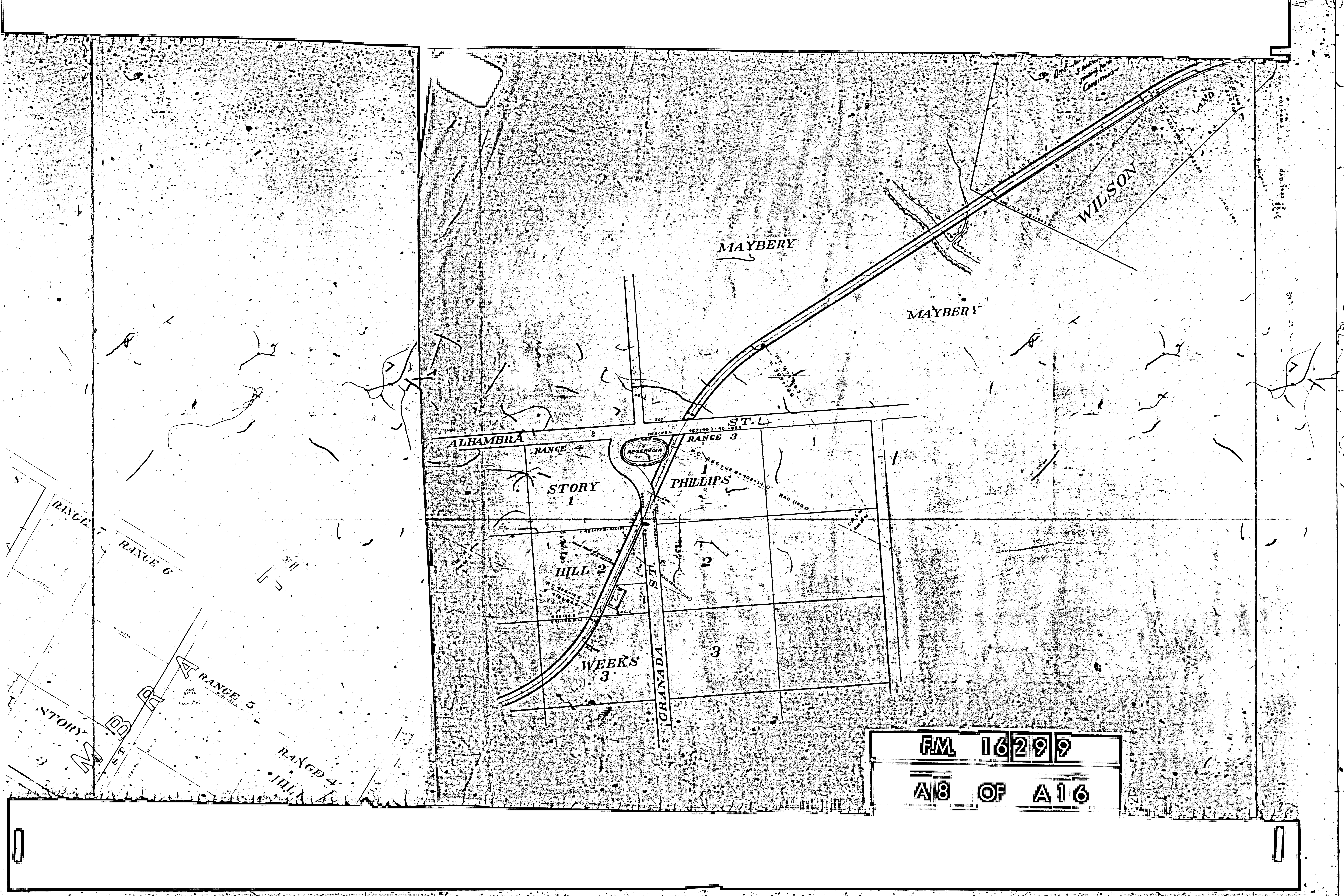
FM 16299
A 6 OF A 16



RACING FROM
 OF WAY MAPS
 OF THE
 ABRIEL VALLEY
 TRANSIT RAILWAY

SCALE 1/4" = 100'
 W.B. Clapp, Assist. Engr.
 W.B. Stewart, Del.

FM 16299
 A7 OF A16



MAYBERY

WILSON

MAYBERY

ALHAMBRA

RANGE 4

RANGE 3

STORY 1

PHILLIPS

HILL 2

WEEKS 3

GRANADA

RESERVOIR

ST. L.

FM 16299

A8 OF A16



FM 16299

A9 OF A16

D-1472-248

MISSION COUNTY
L. J. ROSE C2

ROAD

ROSE ROAD

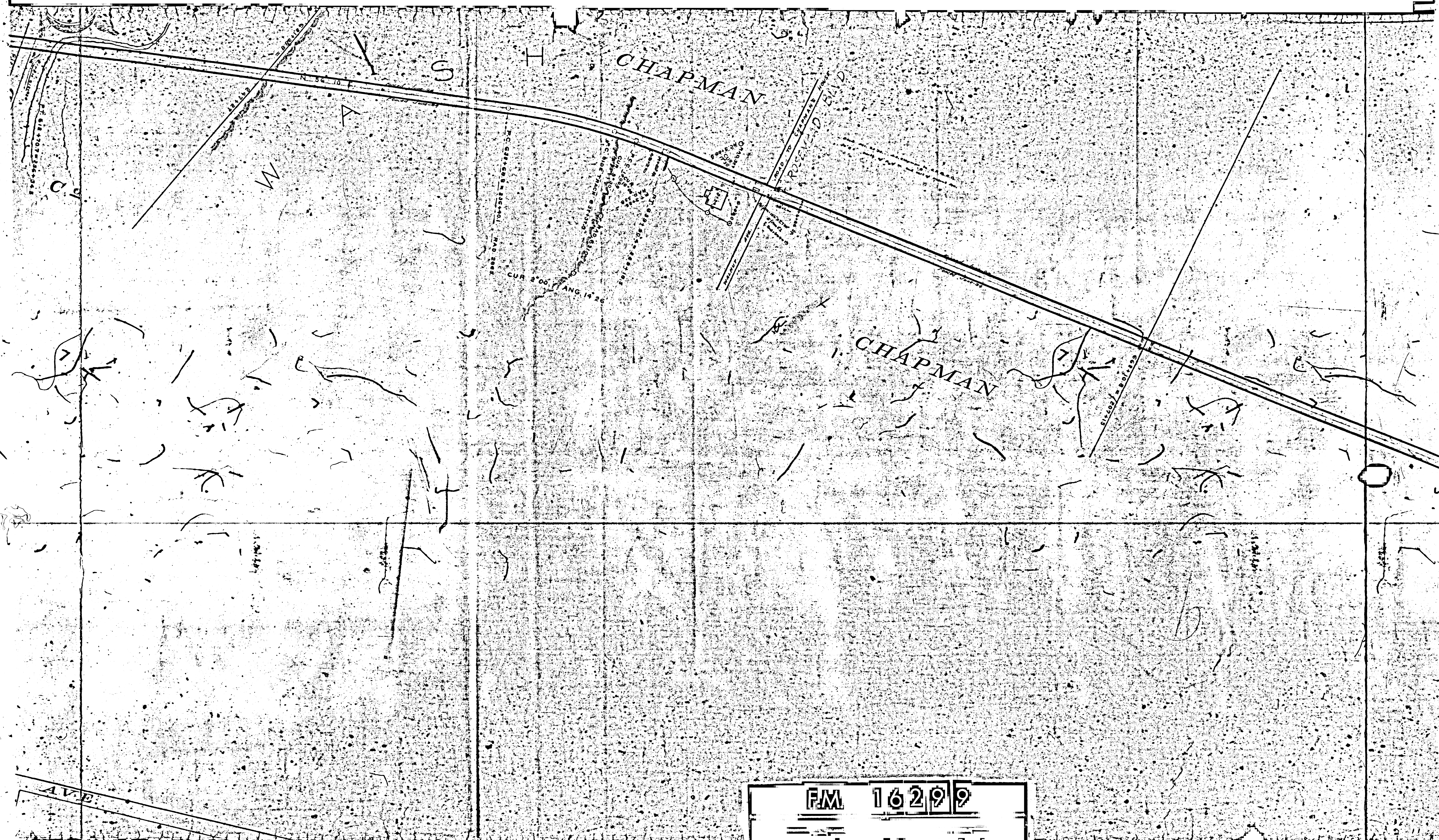
CUR 2°00'
ANG 15°46'

ORANGE

AVE

FM 16299

A10 OF A16



FM 16299
A11 OF A16

BALDWIN

BALDWIN

BAL

FM 16299

A12 OF A16

N. 70° 45' E

AVE.

AVE.

710 7870

210 873

N. 60° 35' E

BALDWIN

BALDWIN

BALDWIN

BALDWIN

BALDWIN

FALLING

SANTA ANITA

CUR 400
TANG 41°

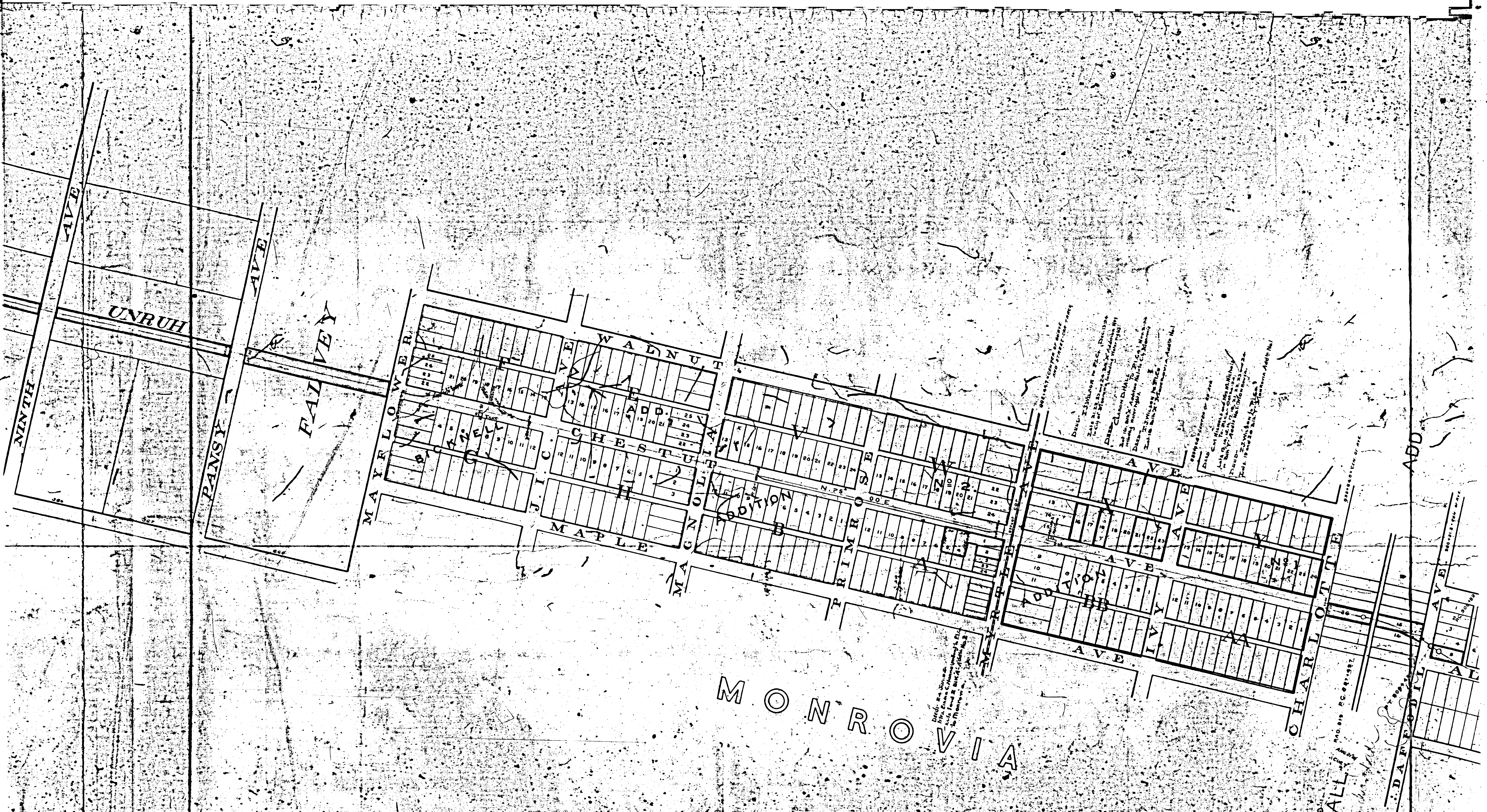
ANG. 21° 30'
CUR. 400'

FM 16299

A13 OF A16



F.M. 16299
A14 OF A16



F.M. 16299
 A15 OF A16

DATE: 2/1/1948
 BY: J. H. W. [illegible]
 FOR THE CITY OF MONROVIA, LIBERIA
 CLAYTON D. WALKER
 ENGINEER
 1000 W. 11th St. Monrovia, Liberia

DATE: 2/1/1948
 BY: J. H. W. [illegible]
 FOR THE CITY OF MONROVIA, LIBERIA
 CLAYTON D. WALKER
 ENGINEER
 1000 W. 11th St. Monrovia, Liberia

DATE: 2/1/1948
 BY: J. H. W. [illegible]
 FOR THE CITY OF MONROVIA, LIBERIA
 CLAYTON D. WALKER
 ENGINEER
 1000 W. 11th St. Monrovia, Liberia

ADD

