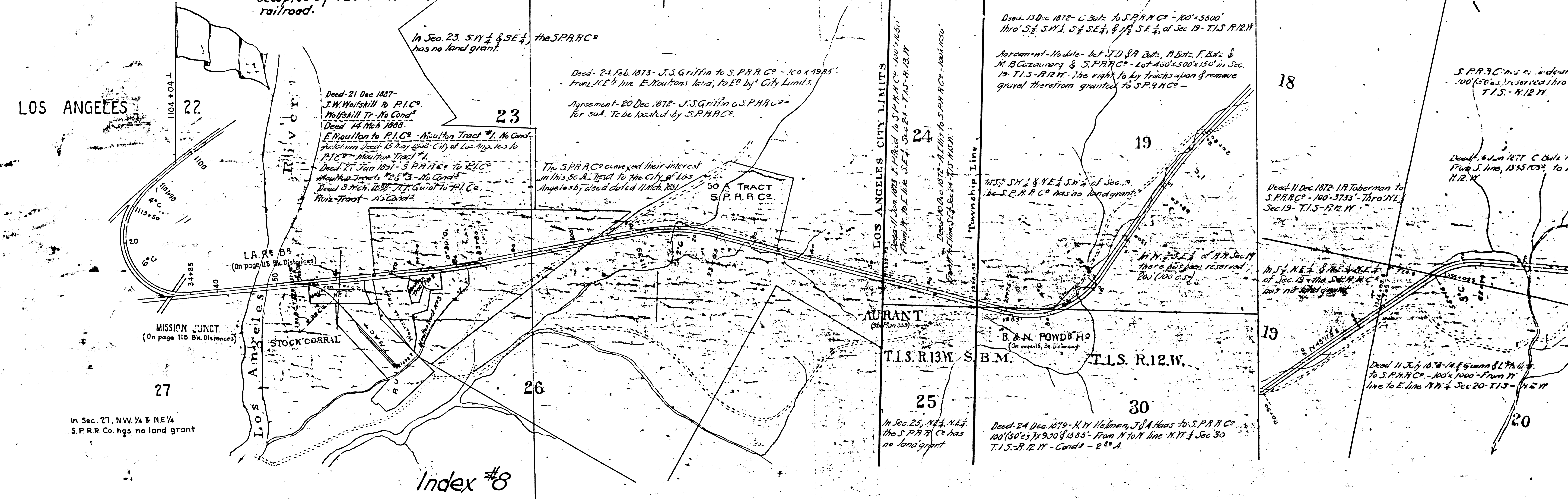


Deed 5820-327  
 S.C.C. No. 39040, City of L.A. vs S.P.R.R.  
 Judgment, Jun. 29, 1913 - It is decreed that  
 S.P.R.R. surrender all of Alhambra Ave.  
 (100 wide from Alameda St. to Mission Rd.)  
 to the City of L.A., except the portion  
 occupied by a double track line of steam  
 railroad.

Scale 1000 ft. = 1 in.



LOS ANGELES

27

In Sec. 27, NW 1/4 & NE 1/4  
 S.P.R.R. Co. has no land grant

Index #8

23

Deed-21 Dec 1837  
 J.W. Wolfskill to P.I.C.  
 Wolfskill Tr. - No Cond.  
 Deed 14 Nov 1868  
 E Houston to P.I.C. - Houston Tract #1. No Cond.  
 Deed 15 May 1868 - City of Los Angeles to  
 P.I.C. - Houston Tract #1.  
 Deed 27 Jan 1891 - S.P.R.R. Co. to P.I.C.  
 Houston Tracts #2 & #3 - No Cond.  
 Deed 3 Nov 1888 - J.T. Guial to P.I.C.  
 Ruiz Tract - No Cond.

The S.P.R.R. Co. conveyed their interest  
 in this Sec. 23 tract to the City of Los  
 Angeles by deed dated 11 Nov 1881.

Deed-24 Feb. 1873 - J.S. Griffin to S.P.R.R. Co. - 100 x 1985'  
 from N.E. 1/4 Sec. E. Nautons Lava, to E. by City Limits.  
 Agreement-20 Dec 1872 - J.S. Griffin to S.P.R.R. Co.  
 for 50 A. To be located by S.P.R.R. Co.

25

In Sec 25, NE 1/4, NE 1/4  
 the S.P.R.R. Co. has  
 no land grant

LOS ANGELES CITY LIMITS

AURANT

T.1.S. R.13.W. S.B.M.

24

30

Deed-24 Dec 1879 - H. H. Holman, J.A. Heas to S.P.R.R. Co.  
 100' (50' ex) x 930' (585' - From N to N line N.Y. 1/4 Sec 30  
 T.1.S.-R.12.W. - Cond # - 2<sup>nd</sup> A.

Deed-13 Dec 1872 - C. Bate to S.P.R.R. Co. - 100' x 5300'  
 thro' S 1/2 SW 1/4, S 1/2 SE 1/4, & 1/2 SE 1/4 of Sec 19 - T.1.S. R.12.W.  
 Agreement - No date - bet S.P.R.R. Co. & M. Bate, F. Bate &  
 M. B. Cotzaurary & S.P.R.R. Co. - Lot 400' x 500' x 150' in Sec.  
 19 - T.1.S.-R.12.W. - The right to lay tracks upon & remove  
 gravel therefrom granted to S.P.R.R. Co. -

1/2 SW 1/4 & NE 1/4 of Sec. 19  
 the S.P.R.R. Co. has no land grant.

1/2 SW 1/4 of P.R. Sec 19  
 there has been reserved  
 200' (100' ex)

19

In S.E. NE 1/4 & NE 1/4 of  
 Sec. 19 - the S.P.R.R. Co.  
 has no land grant.

Deed 11 July 1878 - M. J. Gunn & L. P. H. to  
 S.P.R.R. Co. - 100' x 1000' - From N  
 line to E line N.W. 1/4 Sec 20 - T.1.S. - R.12.W.

S.P.R.R. Co. has no land grant  
 100' (50' ex) reserved thro'  
 T.1.S. - R.12.W.

Deed 6 Jun 1877 - C. Bate to  
 S.P.R.R. Co. - 1335' x 100' - To E  
 R.12.W.

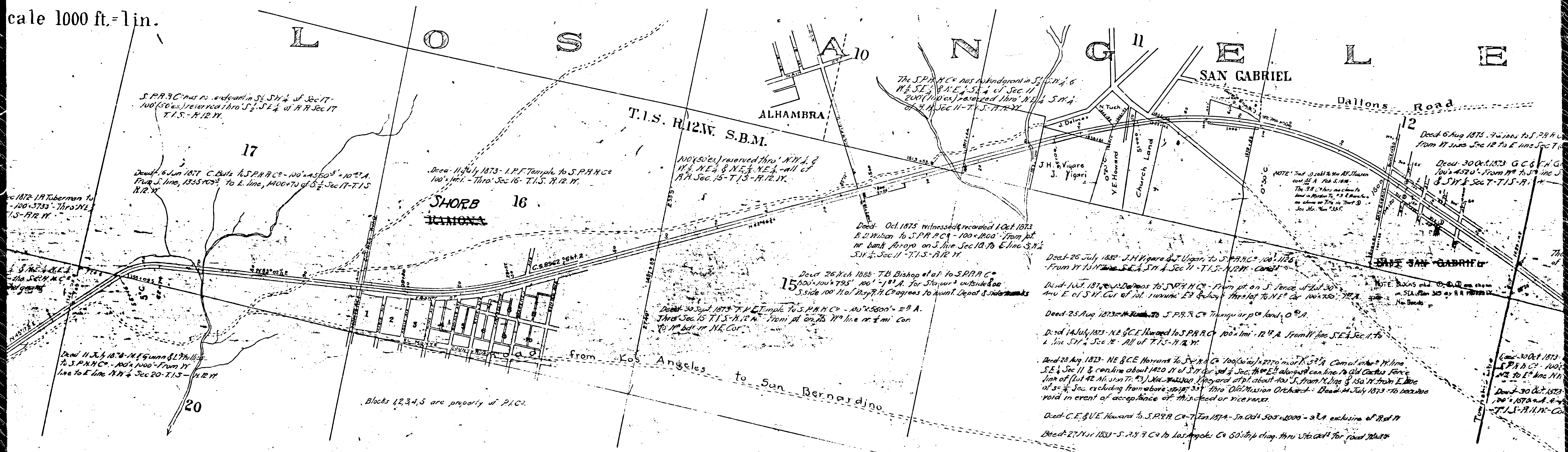
18

Deed 11 Dec 1872 - R. Toberman to  
 S.P.R.R. Co. - 100' x 3733' - Thro' NE 1/4  
 Sec 19 - T.1.S.-R.12.W.

F.M.	1	6	3	0	0
A	1	OF	A	8	

Scale 1000 ft. = 1 in.

# LOS ANGELES



F.M.	16300
A2	OF A8

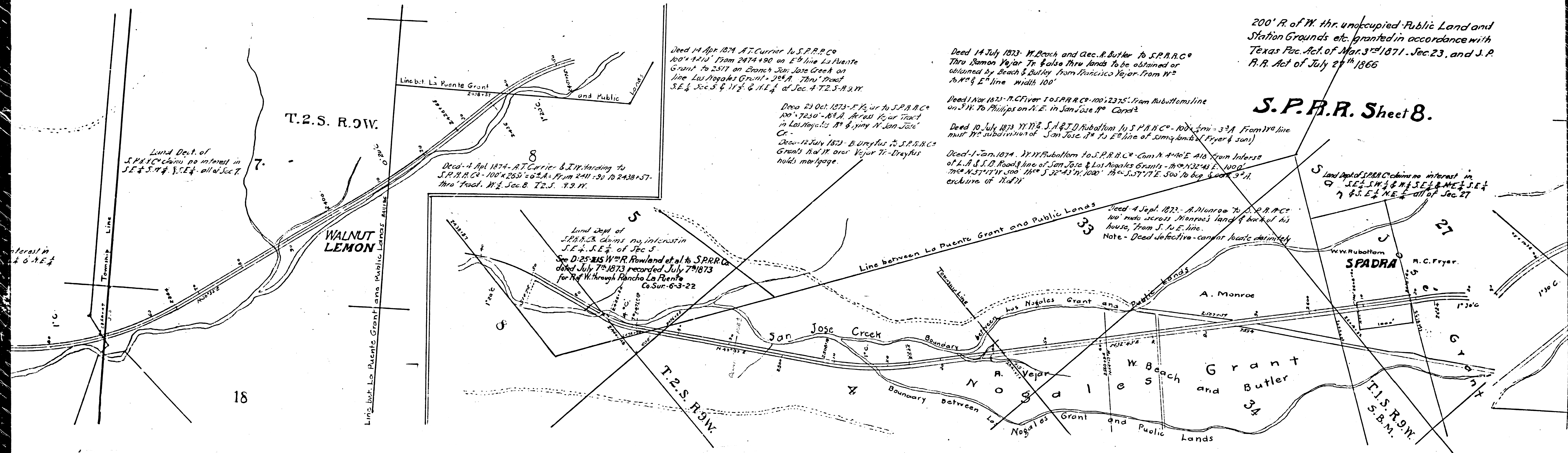






200' R. of W. thr. unoccupied Public Land and Station Grounds etc. granted in accordance with Texas Pac. Act of Mar. 3<sup>rd</sup> 1871. Sec. 23, and S.P.R.R. Act of July 27<sup>th</sup> 1866

**S.P.R.R. Sheet 8.**



Deed 14 Apr 1874 A.T. Currier to S.P.R.R.C. 100' x 4210' From 2474+90 on E<sup>1/2</sup> line La Puente Grant to 2517 on Branch San Jose Creek on line Los Nogales Grant. 2<sup>nd</sup> A. Thru' tract S.E. 1/4 Sec 5 & 11<sup>th</sup> & 11<sup>th</sup> E<sup>1/2</sup> of Sec. 4 T.2.S. R.9.W.

Deed 14 July 1873 W. Beach and Geo. R. Butler to S.P.R.R.C. Thru Ramon Vejar Tr. & also thru lands to be obtained or obtained by Beach & Butler from Francisco Vejar. From W<sup>1/2</sup> 76 N<sup>th</sup> & E<sup>1/2</sup> line width 100'

Deed 1 Nov 1873 A.C. Fryer to S.P.R.R.C. 100' x 2375'. From Rubottom line on S.W. To Phillips on N.E. in San Jose R<sup>o</sup> Card 2

Deed 10 July 1873 W.M.R. S.A. & J.D. Rubottom to S.P.R.R.C. 100' x 3<sup>rd</sup> A. From 170<sup>th</sup> line thru W<sup>1/2</sup> subdivision of San Jose R<sup>o</sup> to E<sup>1/2</sup> line of San Jose R<sup>o</sup> (Fryer & sons)

Deed 1 Jan 1874 W.M. Rubottom to S.P.R.R.C. Cont. N. 4<sup>th</sup> & 6<sup>th</sup> E. 1/2 from interests of L.A. & S.D. Road & line of San Jose & Los Nogales Grants - 76<sup>th</sup> N 32<sup>nd</sup> E. 1000' 76<sup>th</sup> N 37<sup>th</sup> E 500' 11<sup>th</sup> S 32<sup>nd</sup> E 1000' 76<sup>th</sup> S 37<sup>th</sup> E 500' to top & bottom 9<sup>th</sup> A. enclosure of 76<sup>th</sup> N

Land Dept of S.P.R.R.C. claims no interest in S.E. 1/4 S.W. 1/4 & N.E. 1/4 S.E. 1/4 S.E. 1/4 & S.E. 1/4 N.E. 1/4 all of Sec 27

Deed 4 Apr 1874 A.T. Currier & J.W. Harding to S.P.R.R.C. 100' x 2650' = 6<sup>th</sup> A. From 2411+90 to 2438+57 thru tract W<sup>1/2</sup> Sec. 8 T.2.S. R.9.W.

Deed 23 Oct 1873 F. Vejar to S.P.R.R.C. 100' x 7230' = 16<sup>th</sup> A. Across Vejar tract in Los Nogales R<sup>o</sup> & 1/4<sup>th</sup> N. San Jose Cr.

Deed 12 July 1873 B. Dreyfus to S.P.R.R.C. Grants Ad. W. over Vejar Tr. - Dreyfus holds mortgage.

Land Dept of S.P.R.R.C. claims no interest in S.E. 1/4 S.E. 1/4 of Sec 5 See D: 25-115 W.M.R. Rowland et al to S.P.R.R.C. dated July 7<sup>th</sup> 1873 recorded July 7<sup>th</sup> 1873 for Ref. W. through Rancho La Puente Co. Sur. 6-3-22

Deed 4 Sept 1873 A. Monroe to S.P.R.R.C. 100' wide across Monroe's land & back of his house, from S. to E. line. Note - Deed defective - cannot locate definitely

F.M. 16300  
A 6 OF A 8

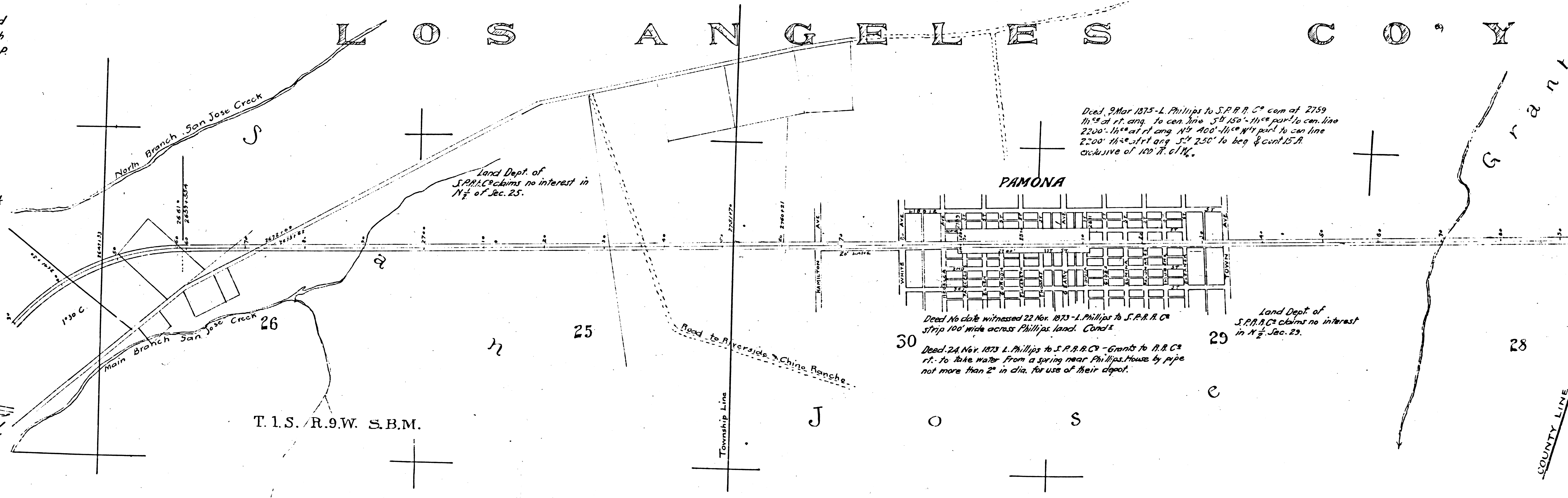
Public Land and  
etc. granted in accordance with  
Act of Mar. 3<sup>rd</sup> 1871, Sec. 23, and S.P.  
Act of 1866

R. Sheet 8.

Land Dept. claims no interest in  
SE 1/4 SW 1/4 & NE 1/4 SE 1/4 & SE 1/4  
& NE 1/4 NE 1/4 all of Sec. 27

W.W. Rubottom  
**SPADRA**  
M.C. Fryer.

T.1.S. R.9.W. S.B.M.



Deed, 9 Mar 1875 - L. Phillips to S.P.R.R.C. com at 2759  
1 1/2<sup>mi</sup> at rt. ang. to cen. line 58 150' - 11<sup>mi</sup> part to cen. line  
2200' - 1 1/2<sup>mi</sup> at rt. ang. N 1/4 400' - 11<sup>mi</sup> part to cen. line  
2200' - 1 1/2<sup>mi</sup> at rt. ang. S 1/4 250' to beg. & cont. 15 A.  
exclusive of 100 ft. of 1/4.

Deed No date witnessed 22 Nov. 1873 - L. Phillips to S.P.R.R.C.  
strip 100' wide across Phillips land. Cont. 1/2

Deed, 24 Nov. 1873 L. Phillips to S.P.R.R.C. - Grants to R.R.C.  
rt. to take water from a spring near Phillips House by pipe  
not more than 2" in dia. for use of their depot.

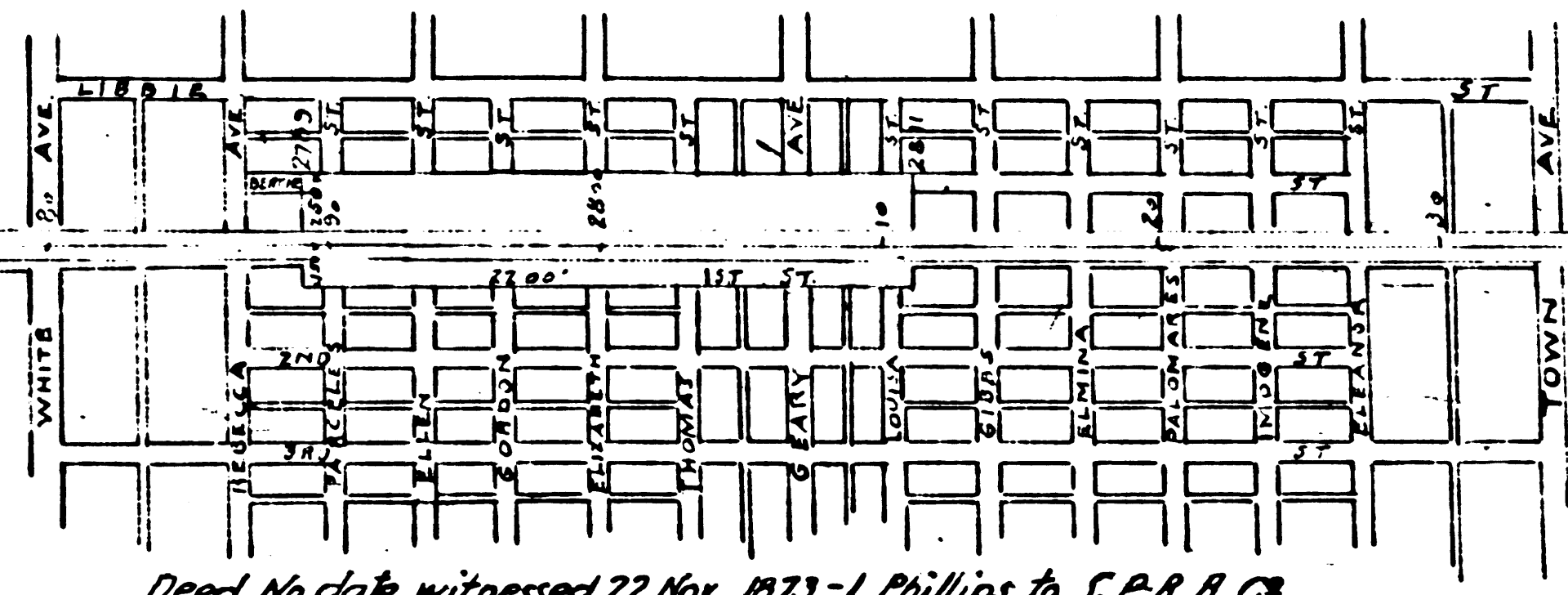
Land Dept. of  
S.P.R.R.C. claims no interest  
in N 1/2 - Sec. 29.

F.M.	1	6	3	0	0
A	7	OF	A	8	

A N G E L E S C O U N T Y

Deed, 9 Mar 1875 - L. Phillips to S.P.R.R. Co com of 2759  
11<sup>1</sup>/<sub>2</sub>° at rt. ang. to cen. line 5<sup>3</sup>/<sub>4</sub> 150' - 11<sup>1</sup>/<sub>2</sub>° part. to cen. line  
2200' - 11<sup>1</sup>/<sub>2</sub>° at rt. ang. N<sup>1</sup>/<sub>2</sub> 400' - 11<sup>1</sup>/<sub>2</sub>° part. to cen. line  
2200' - 11<sup>1</sup>/<sub>2</sub>° at rt. ang. S<sup>1</sup>/<sub>2</sub> 250' to beg. & cont. 15<sup>1</sup>/<sub>2</sub> A.  
exclusive of 100<sup>1</sup>/<sub>2</sub> ft. of 1/4.

PAMONA



Deed No date witnessed 22 Nov. 1873 - L. Phillips to S.P.R.R. Co  
Strip 100' wide across Phillips land. Cont<sup>s</sup>  
Deed, 24 Nov. 1873 L. Phillips to S.P.R.R. Co - Grants to R.R. Co  
rt. To take water from a spring near Phillips House by pipe  
not more than 2" in dia. for use of their depot.

Land Dept. of  
S.P.R.R. Co claims no interest  
in N<sup>1</sup>/<sub>2</sub> Jac. 23.

Grant

San Jose Grant & Public Lands.

COUNTY LINE

T.1.S. R.8W.

Index #8

NEG. 573

Billing Size 25' x 18' = 450'

F.M.	1	6	3	0	0
A	8	OF	A	8	