

S.P.R.R. WHITTIER BRANCH

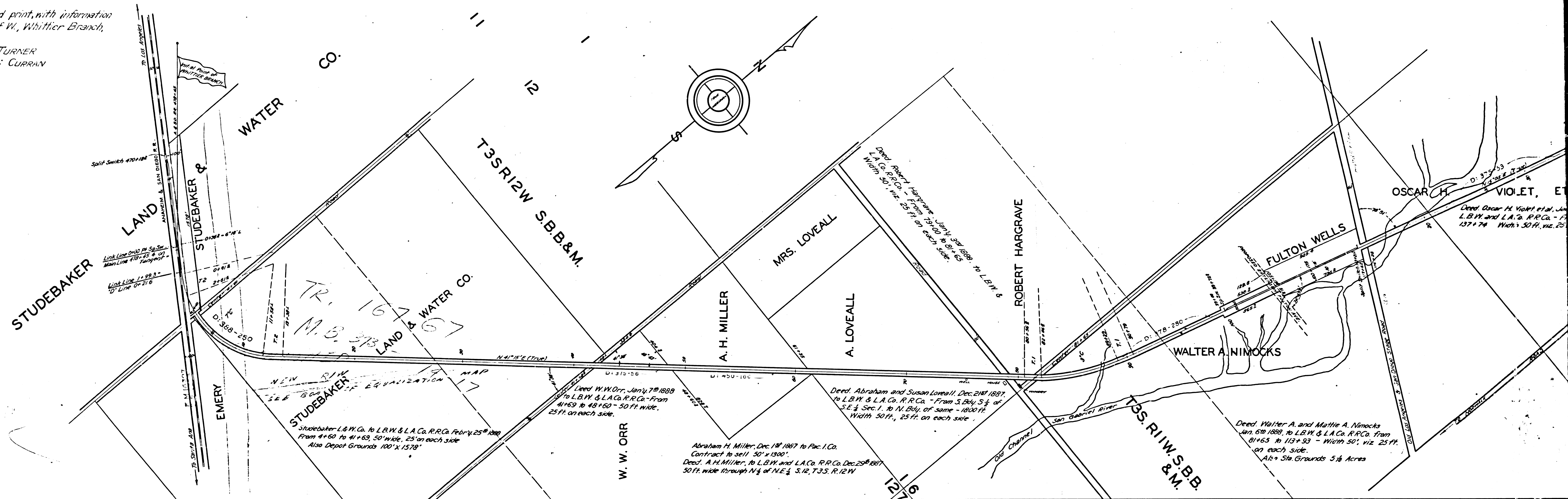
SCALE: 400 FEET = ONE INCH

L O S A N G E L E S C O U N T Y

Traced from Co. Surv's. filed print, with information added from map of R. of W. Whittier Branch, records of S.P.R.R.

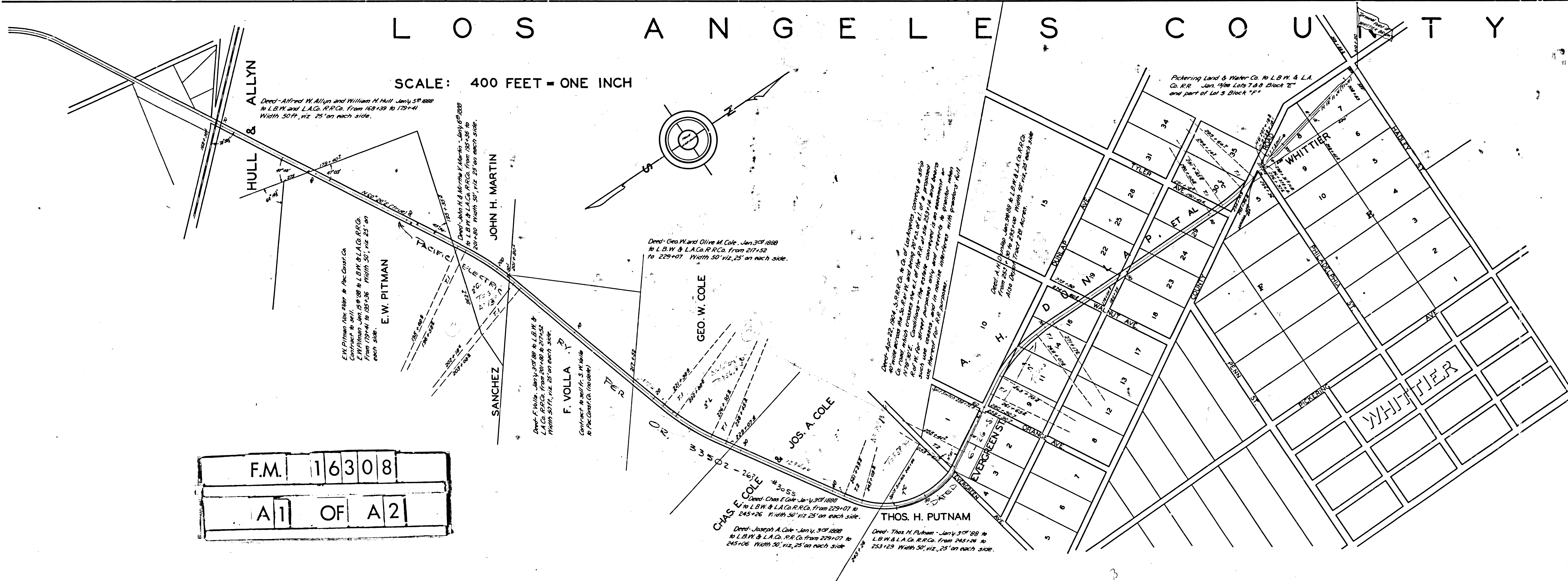
Traced by: TURNER
Checked by: CURRY

County Surveyor
November 12, 1943



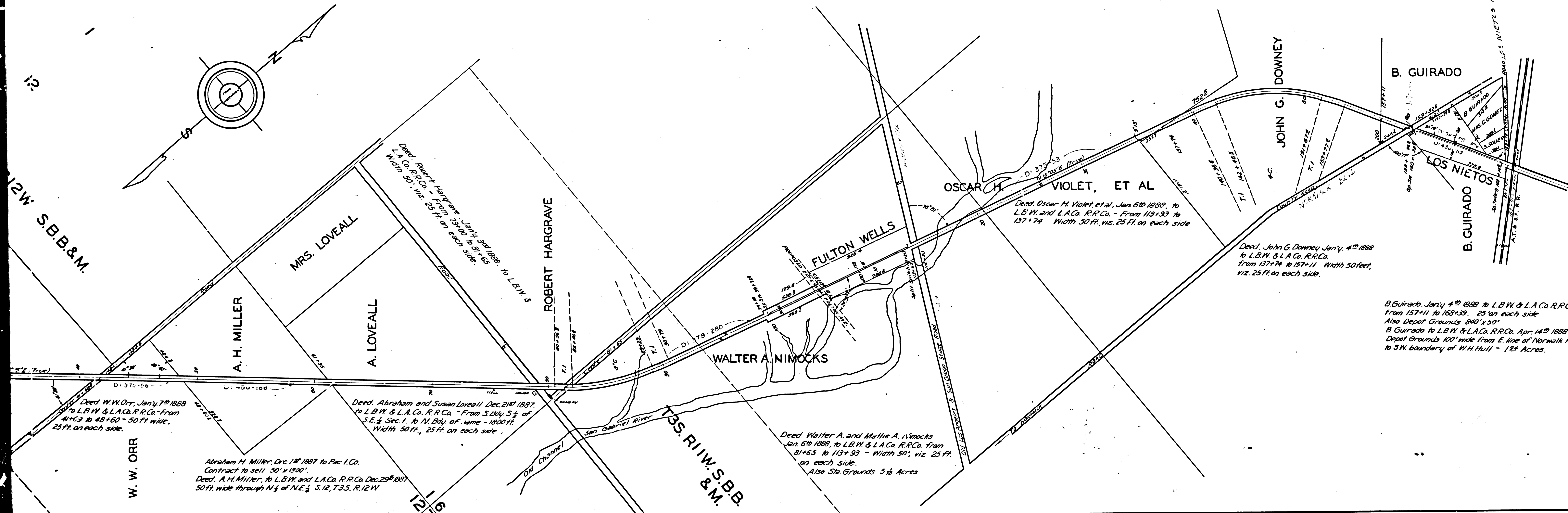
L O S A N G E L E S C O U N T Y

SCALE: 400 FEET = ONE INCH



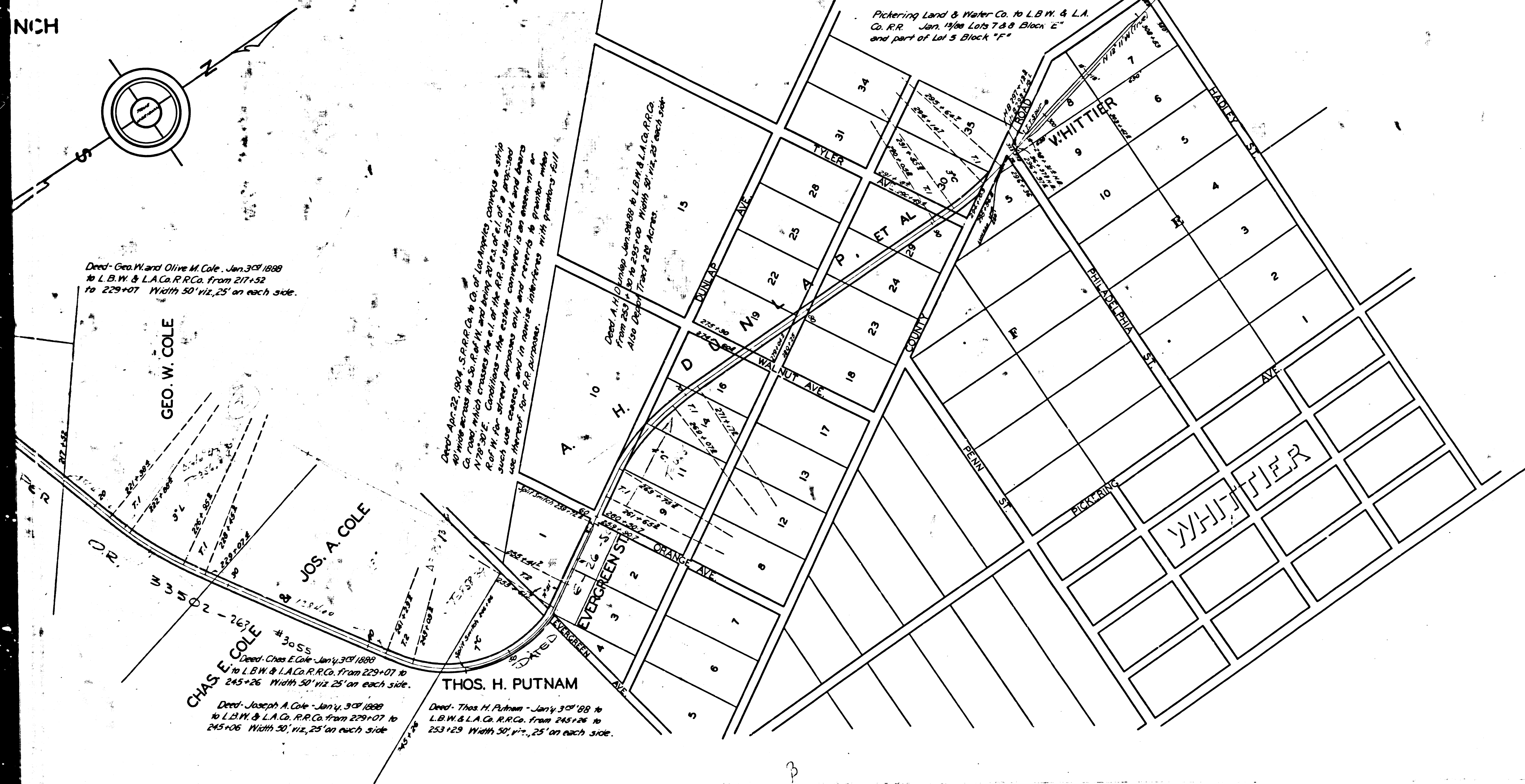
F.M.	16308
A1	OF A2

S A N G E L E S C O U N T Y



B. Guirado, Jan'y 4th 1888 to L.B.W. & L.A. Co. R.R. Co. From 137+11 to 157+29 - 25' on each side
 Also Depot Grounds 40' x 50'
 B. Guirado to L.B.W. & L.A. Co. R.R. Co. Apr. 14th 1888
 Depot Grounds 100' wide from E. line of Normal Road to SW. boundary of W.H. Hull - 12 1/2 Acres.

A N G E L E S C O U N T Y



F.M.	16308
A 2	OF A 2