

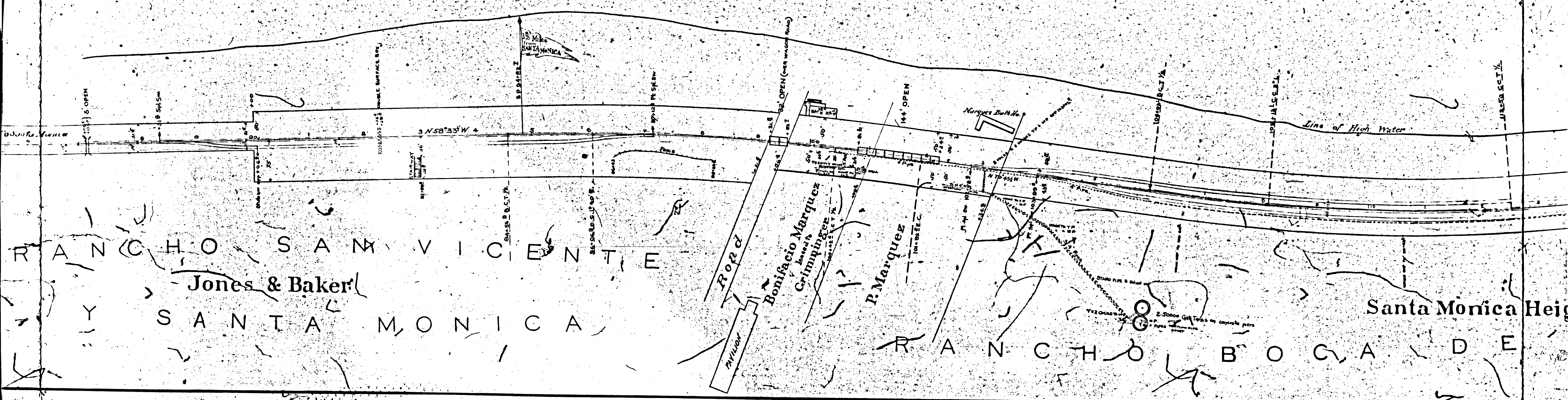
SCALE: 100 FT. TO AN INCH

SANTA MONICA CAÑON

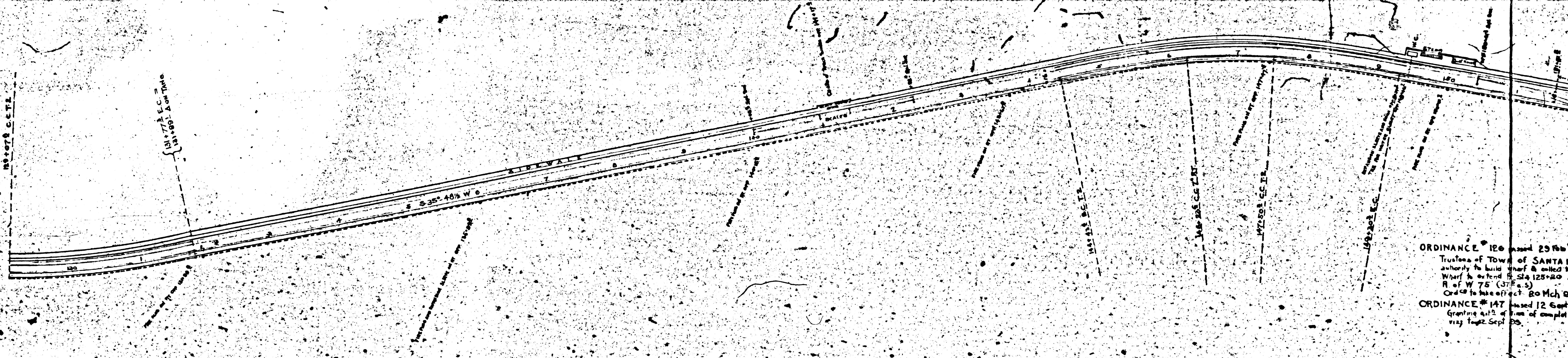
DEED # 910 28 Dec 81 FRANK H DAVIS to S P R R Co
 100' (36' on L & 43' on R) fr Sta 105+34.2 to W by Sta 106+25.4
 Also (Sta 124+60) to line of H.W. (125' E of intersec. of c.l. of wharf with S. l. of abut.)
 No cond's

QUITCLAIM & RELEASE # 967 3 July 82 JOHN T GAFFEY to S P R R Co
 to R of W as shown on map of R of W sought to be condemned by Sup Ct of Los
 Ang Ct of Rec 18 569 fr Sta 05+56.2 to Sta 125.
 No cond's

DEED # 182 27 Oct 82 MARIA ANTONIO OLIVARIS DE MARQUEZ to P. I. C
 100' (50' ea) fr Blk 'A' of R' Boca de Santa Monica
 Cond' R R purposes exclusively.



SCALE: 100 FT. TO AN INCH



ORDINANCE # 126 passed 25 Feb 83
 Trustees of Town of SANTA M
 authority to build wharf & called 44
 Wharf & extend to Sta 125+20 a
 R of W 75 (37 E 5)
 Ord' to take effect 20 Mch 82

ORDINANCE # 147 passed 12 Sept 82
 Granting 412 1/2' of line of canal 5
 1147 Sept 82

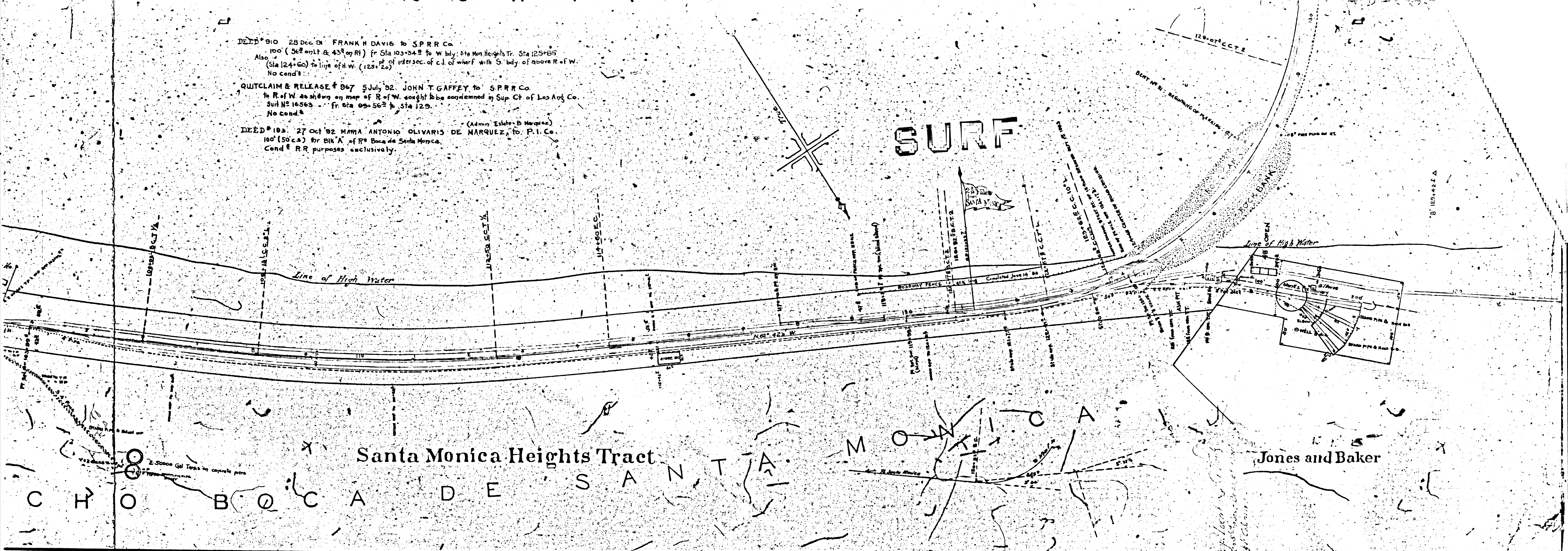
F M 116310
 A 11 01 A 2

DEED # 910 28 Dec 01 FRANK H DAVIS to S.P.R.R. Co.
 100' (36' on LT & 43' on RT) fr Sta 103+24.2 to W bdy. Sta Mon Heights Tr. Sta 125+85
 Also (Sta 124+60) to line of H.W. (123+20) pt of intersec. of c.l. of wharf with S. bdy. of above R of W.
 No cond's.

QUITCLAIM & RELEASE # 867 5 July '02 JOHN T GAFFEY to S.P.R.R. Co.
 to R of W as shown on map of R of W sought to be condemned in Sup Ct of Los Ang Co.
 Surf No 16563 fr Sta 09+56.2 to Sta 125.
 No cond's.

DEED # 193 27 Oct '02 MARIA ANTONIO OLIVARIS DE MARQUEZ to P.I. Co.
 100' (50' ea) for Bk 'A' of R of Boca de Santa Monica.
 Cond # RR purposes exclusively.

SURF



Santa Monica Heights Tract

Jones and Baker

ORDINANCE # 126 passed 25 Feb '02 (see Alameda # 16)
 Trustees of TOWN of SANTA MONICA grant to S.P.R.R. Co.
 authority to build wharf & called this Wharf into Sta Mon Bay
 Wharf to extend fr Sta 125+20 a distance of 6668.2 feet.
 R of W 75' (37' ea.)
 Ord to take effect 20 Mch '02.

ORDINANCE # 147 passed 12 Sept '02. Same & Same.
 Granting extra of line of wharf of 12' from date
 1st to 12 Sept '02.

PORT LOS ANGELES

F/M 116310
 A 2 OF A 2