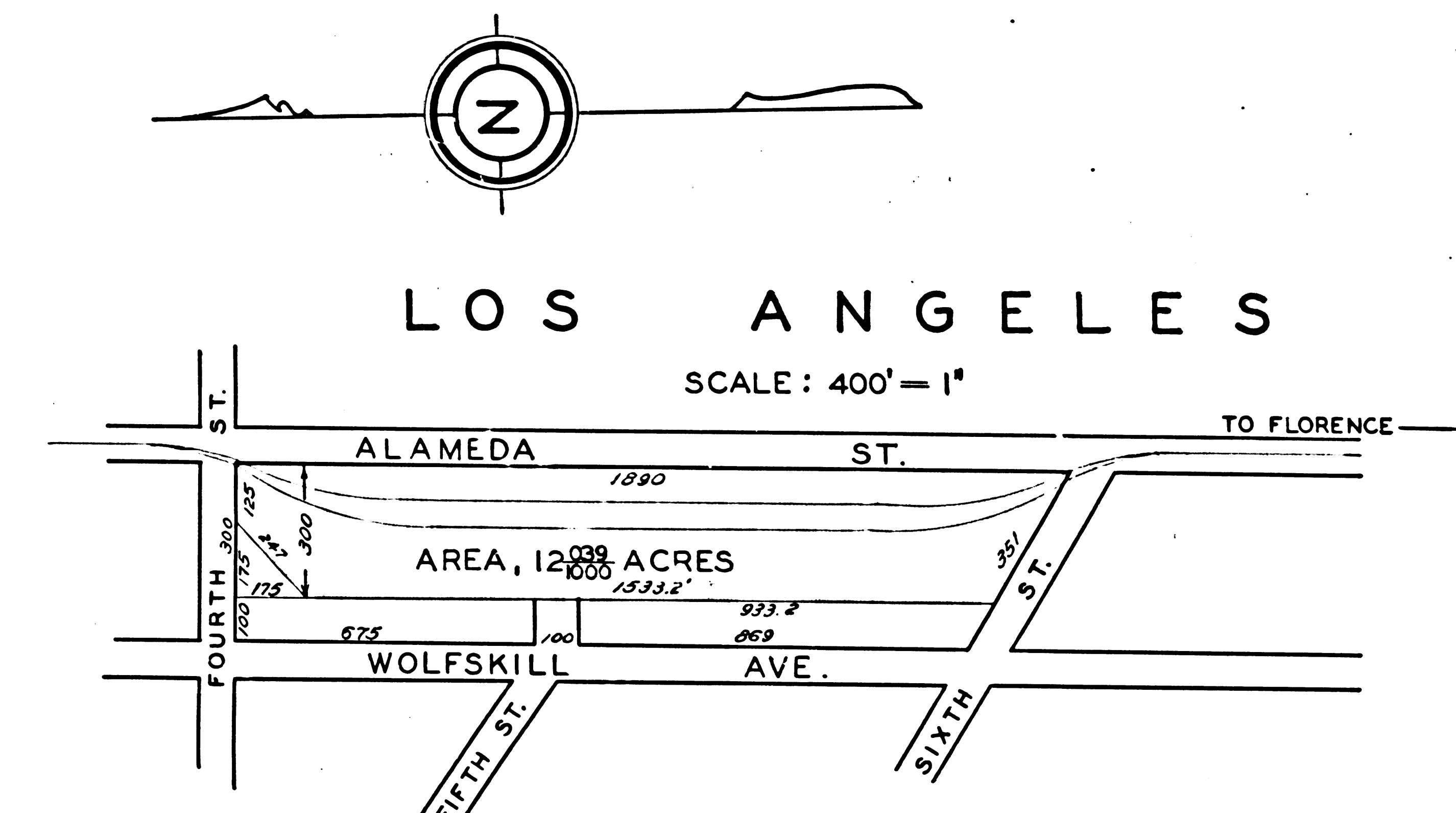


DESCRIPTION OF LAND OWNED AND OCCUPIED BY S.P.R.R.CO. - JAN. 1892

Beginning at a point where the Westerly line of San Fernando St. intersects the S.E'y line of Buena Vista St., said point being at or near the S.W'y corner of Overhead Bridge, and running thence along the S.E'y line of Buena Vista St. in a S.W'y direction (courses 1-2-3-and 4) a distance of 1090ft. more or less thence leaving said Buena Vista Street line and running about S 28° E (course 5) 175 ft. more or less to the S.E'y line of Zanja, thence following said line of Zanja in a S.W'y direction (course 6) 335 ft. more or less, thence about N 31° W (course 7) 220 ft. more or less to the S.E'y line of Buena Vista St. thence following said Buena Vista Str. line (course 8) 30 7/8 ft. thence about S 31° E (course 9) 215 more or less to the S.E'y line of Zanja thence following said line of Zanja in a S.W'y direction (course 10) 160ft. more or less thence about due North (course 11) 290ft. more or less to the S.E'y line of Buena Vista St. thence following said street line in a S.W'y direction (course 12) 63 7/8 ft. thence about due South (course 13) 290 ft. more or less to the S.E'y line of Zanja thence following said Zanja line in a S.W'y direction (course 14) 430ft. more or less, thence about N 41° W (course 15) 55 ft. more or less thence about S 62° W (course 16) 300 ft. more or less to the S.E'y line of Buena Vista St., this point being about 250 ft. N.E'y from the N.E'y line of Bishop St., thence following the S.E'y line of Buena Vista St. (courses 17 and 18) in a S.W'y direction 740 ft. more or less, thence about S 42° E (course 19) 135 ft. more or less to the S.E'y line of the Zanja thence following said Zanja in a S.W'y direction (courses 20, 21, 22, and 23) 1160 ft. more or less, thence about S 68° E (course 24) 215 ft. more or less to a point in the N.W'y line of Alameda St., said point bearing about N 68° W 150 ft. more or less from the S.E. corner of Alameda and Exchange Streets, thence following the N.W'y line of Alameda St. in a N.E'y direction to its intersection with the N.W'y line of San Fernando St. (course 25) thence along the N.W'y line of San Fernando St. in a N.E'y direction (course 26) a total distance of 4260 ft. more or less to the point of beginning containing an Area of 43 Acres more or less.

Note: The foregoing description is taken by Scale from Station Plan (Scale 100' = 1") in S.P.R.R. Office (M. of W. Dept.)



DESCRIPTION OF LAND OWNED AND OCCUPIED BY S.P.R.R. - JAN. 1892

Beginning at a point where the W'y line of Alameda St. intersects the S'y line of Fourth St., thence W'y following said S'y line of Fourth St. 125 ft. thence S.E'y at an angle of 45° to Fourth St. 247 ft. to a point 300 ft. distant and at right angles to the W'y line of Alameda St., thence S'y and parallel to said W'y line of Alameda St. 1533 7/8 ft. to the N.E'y line of Sixth St., thence following said N.E'y line of Sixth St. 351 ft. to the W'y line of Alameda St. thence N'y along said W'y line of Alameda St. 1890 ft. to the point of beginning containing an Area of 12 000/1000 Acres.

Traced from Original By : N. Turner
 Checked By : Fensler
 Date : August 1943

F.M. 16311