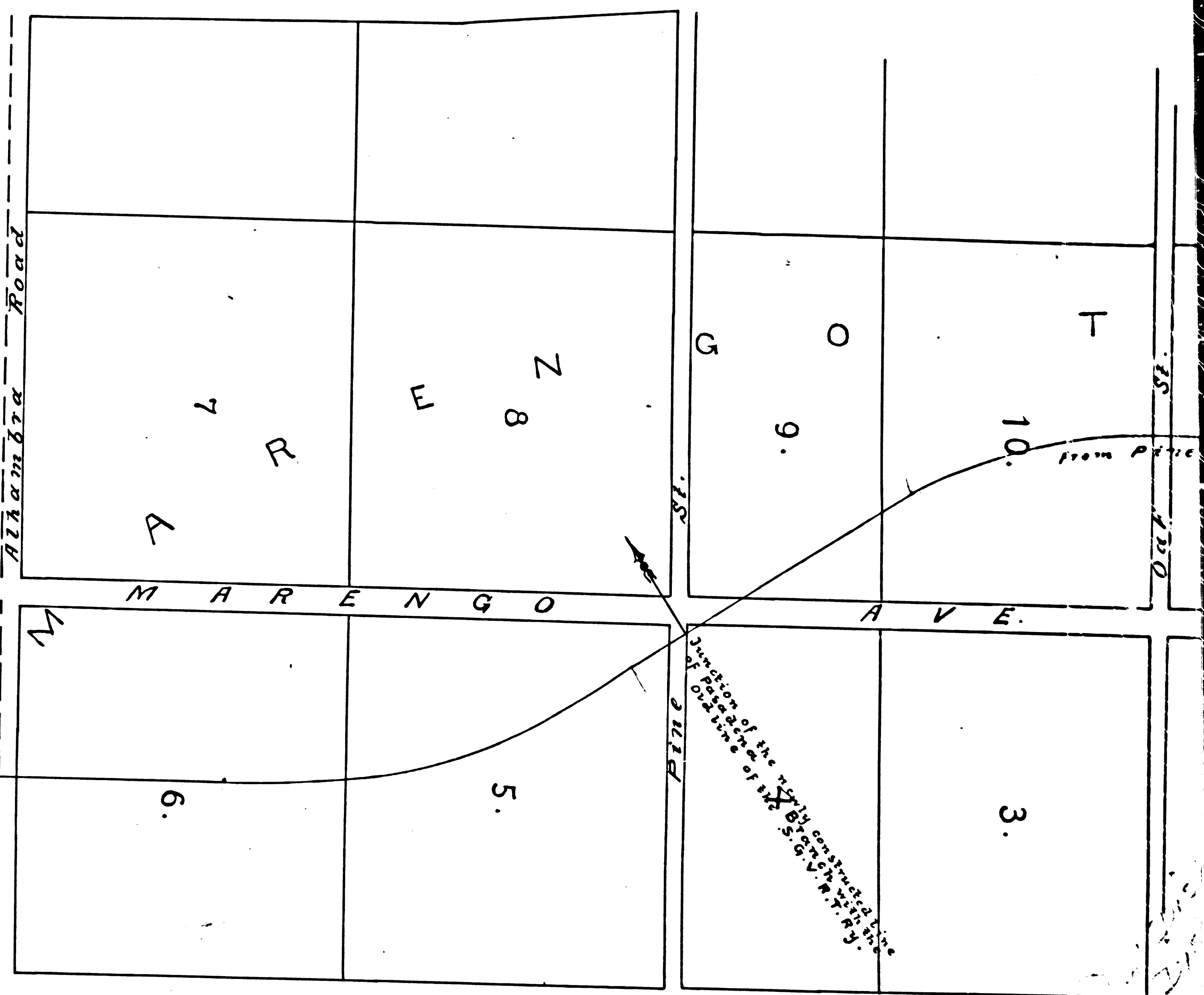
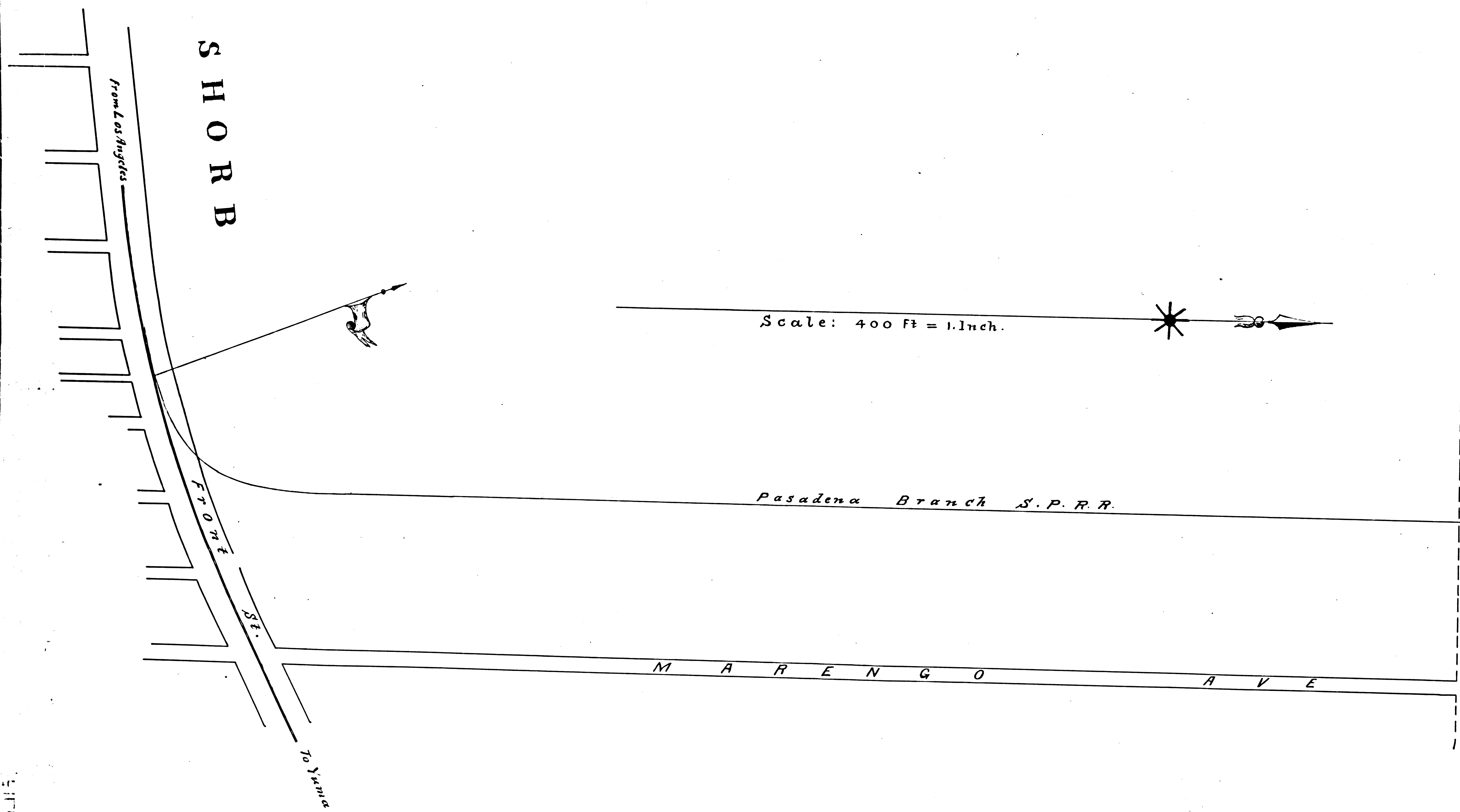


C O U N

S O U T H P A S A D E N



1.384 miles in Pasadena
 2.097 miles in South Pasadena
 1.353 miles in Alhambra
 4.834 Miles (Total)

F.M. 16312

A1 OF A3

FILED MAP TO ROAD

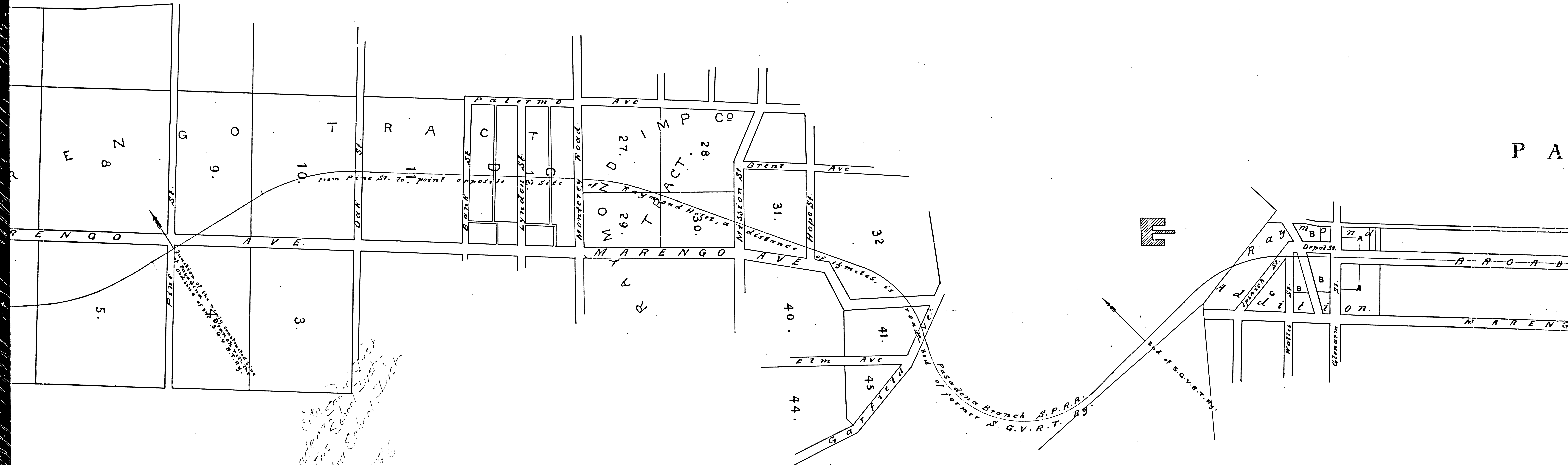
C O U N T Y

of

L O S A N G E L E

S O U T H P A S A D E N A

1 M S



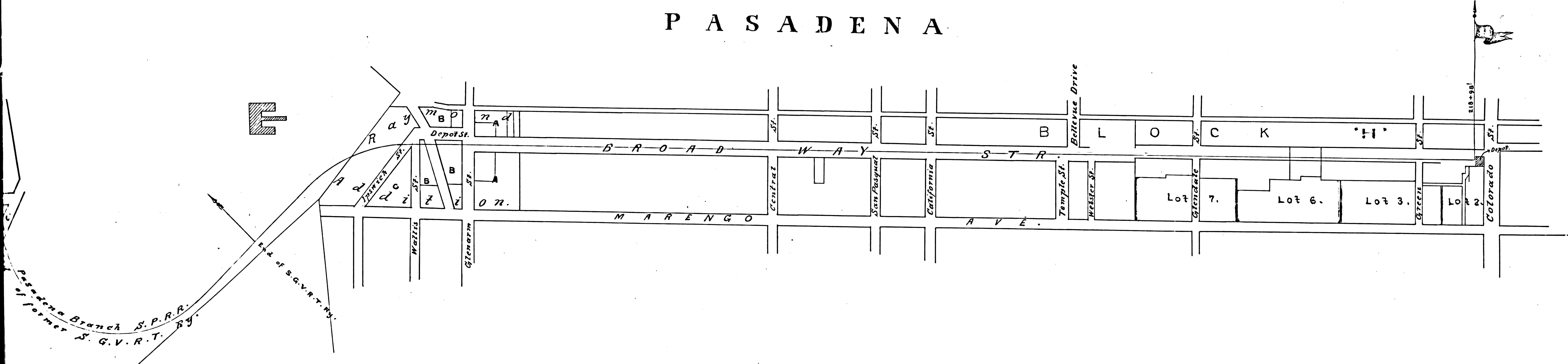
*1.380 miles in Pasadena San Gabriel
 1.071 miles in Santa Fe
 1.352 miles in Alhambra School Dist.
 4.834 miles
 Jan. 1896*

Note: From Pine St. to a point opposite the site of the Raymond Hotel, a distance of 1/2 miles, the road bed of the Pasadena Branch is the same as that of the former San Gabriel Valley Rapid Transit Ry. The remainder of the road bed of the S.G.V.R.T. Ry to Pasadena has been abandoned.

F.M. 16312
 A2 OF A3

LOS ANGELES.

PASADENA.



F.M. 16312
 A3 OF A3

FILED MAP NO. 16312

FILED MAP NO. 16312