

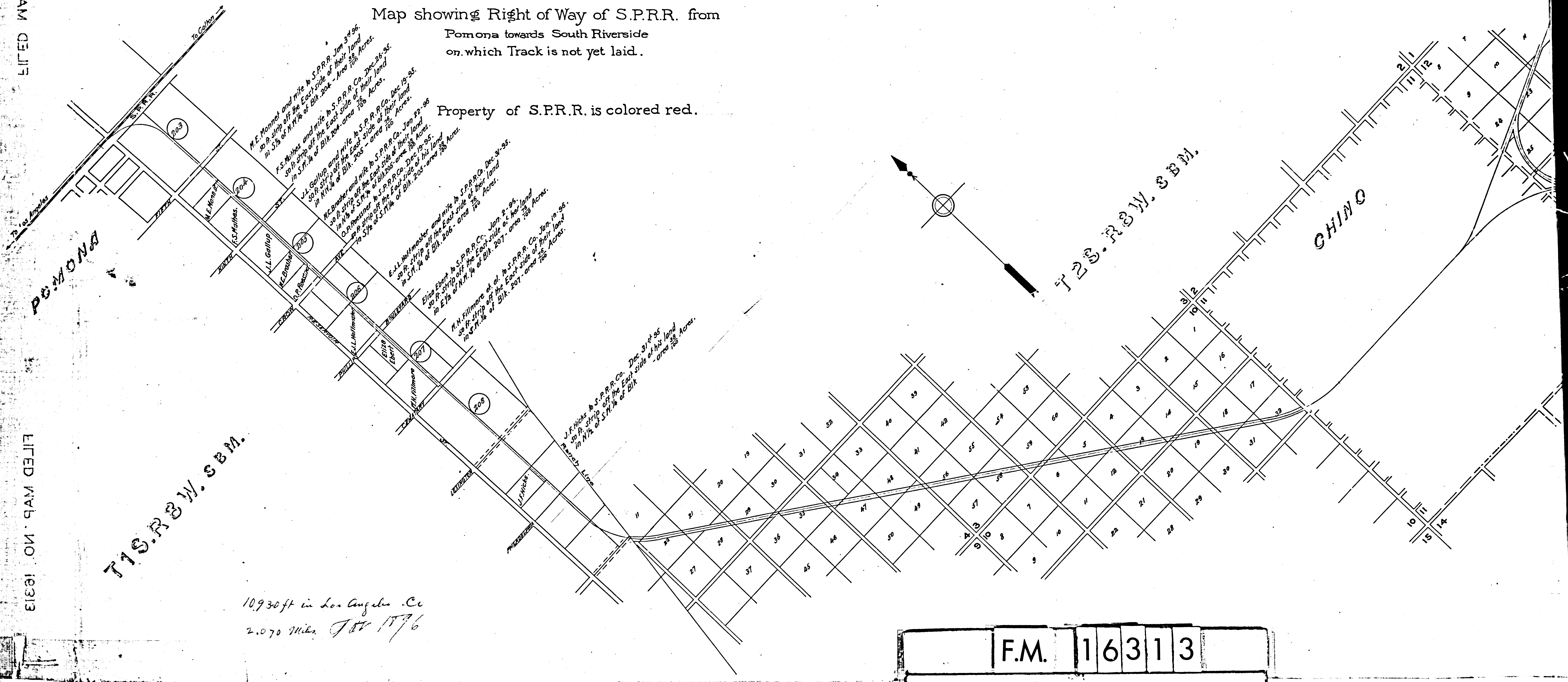
RANCHO SANTA ANA DEL CHINO.

Map showing Right of Way of S.P.R.R. from
Pomona towards South Riverside
on which Track is not yet laid.

Property of S.P.R.R. is colored red.

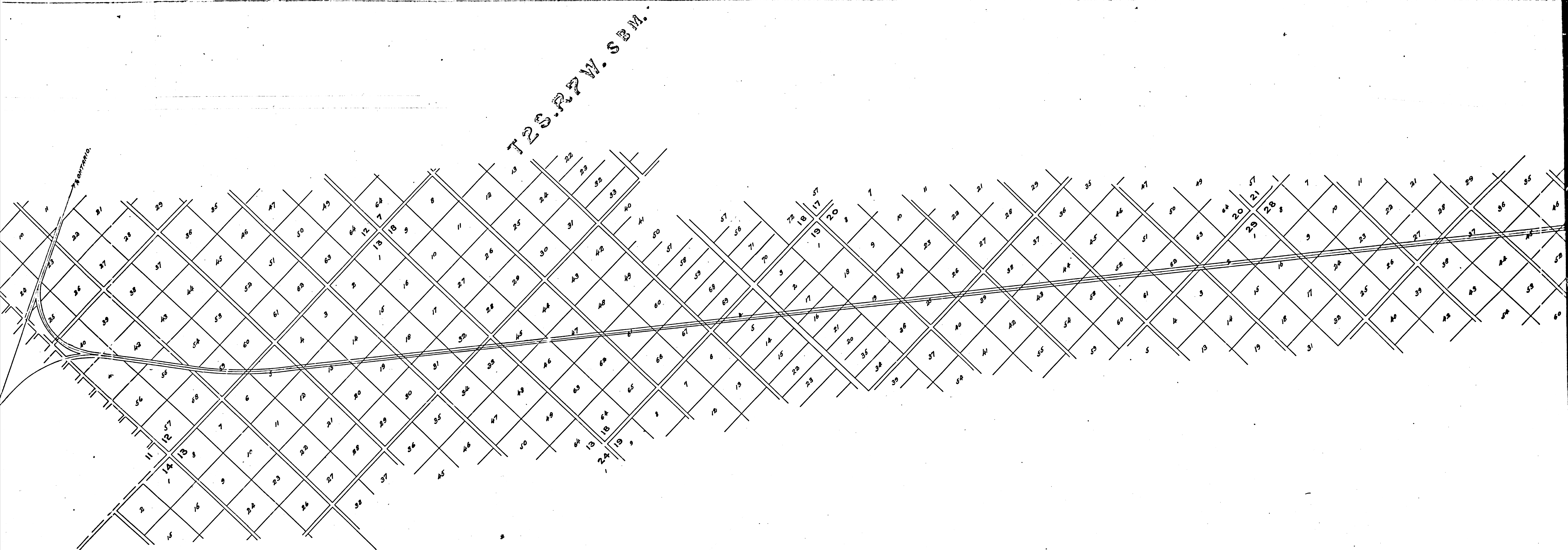
FILED MAP NO. 16313

FILED MAP NO. 16313



10,930 ft in Los Angeles. Ca
2.070 Miles. Jan 1896

F.M.	1	6	3	1	3
A	1	OF	A	3	



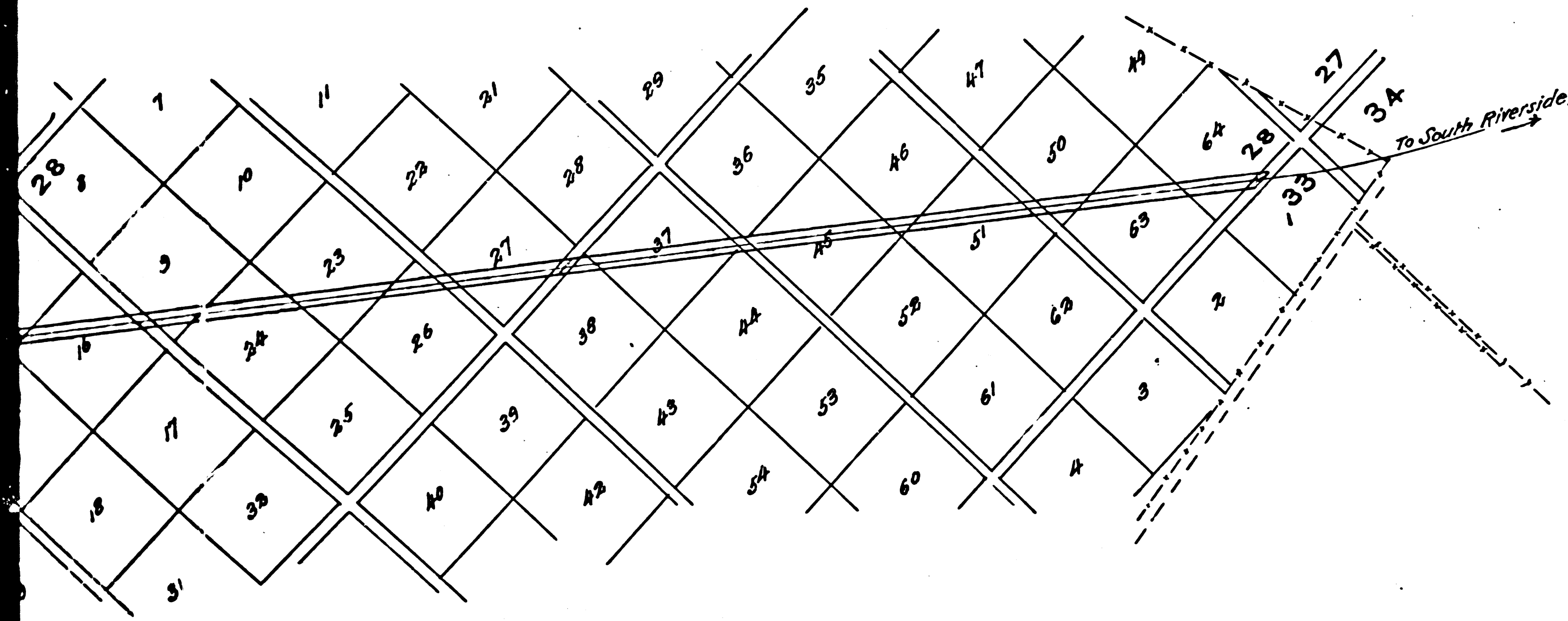
T2S.R2W.S3M.

Note: The right of way thro. the Chino Rancho, was formerly the right of way of the Pomona and Elsinore R.R. and was conveyed by Richard Gird to Pac. Imp. Co. and by the latter Co. to the S.P.R.R.Co. Jan. 10th 1896. - Tract not yet laid on it.

LOS ANGELES CO.

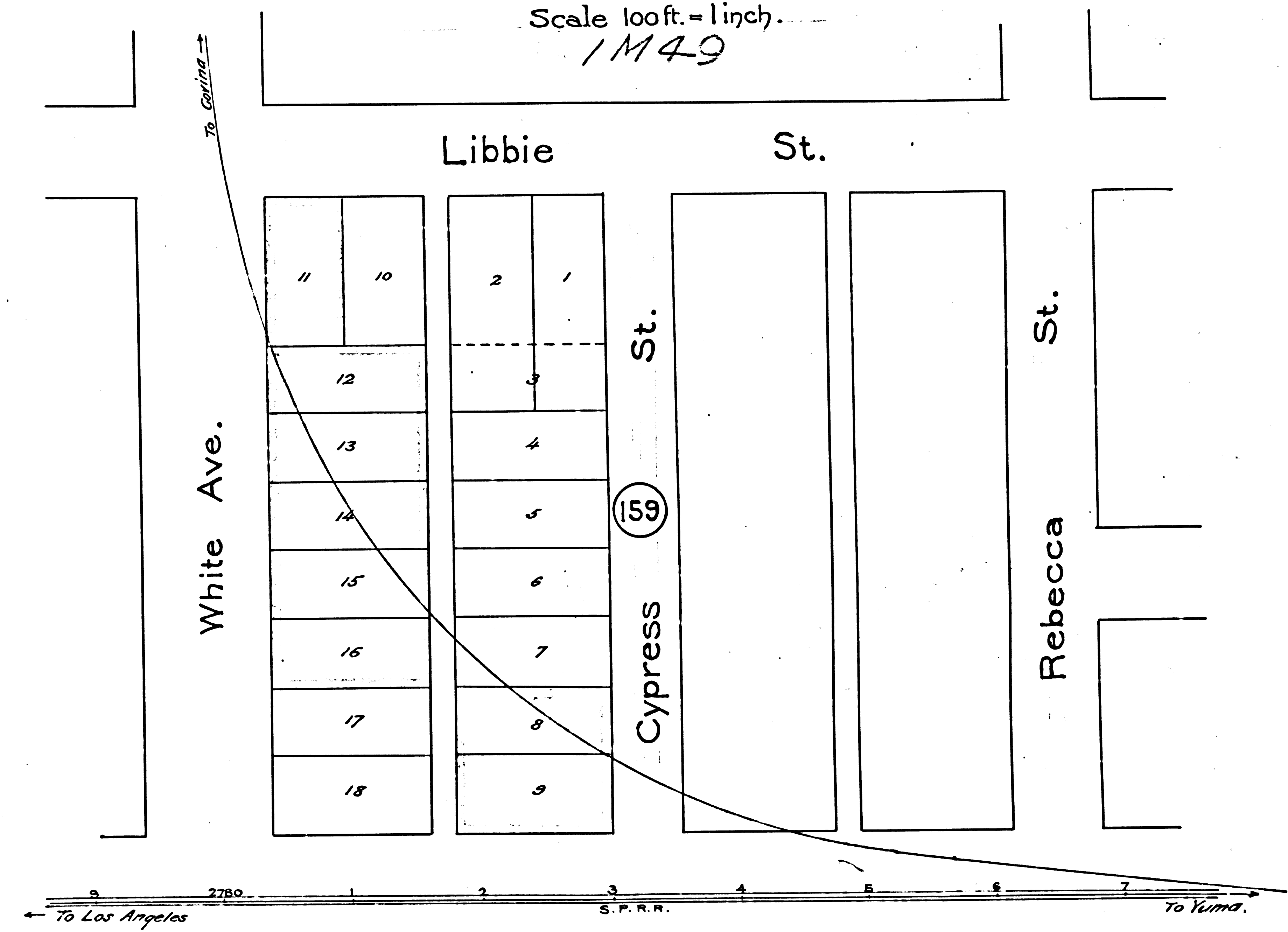
Scale 1000 ft. = 1 inch.

F.M.	1	6	3	1	3
A	2	OF	A	3	



Block 159 City of Pomona.

Scale 100ft. = 1inch.
11149



F.M.	1	6	3	1	3
A	3	OF	A	3	