

Quilgaim Deed Jan 17 1847 SPKR to R. Willis ... 5 Wly. from E. of E. 21300 ...  
 Deed: Mrs. Rita B. de Aguilar to L.A. & I.R.R.C. dated May 18<sup>th</sup> 1877 ...  
 Deed: Tomasa Talamantis to L.A. & I.R.R.C. dated May 18<sup>th</sup> 1877 ...  
 Deed: Michael Kay and Wife to S.P.R.R.C. dated Feb. 25<sup>th</sup> 1893 ...  
 Deed: Andrew Stephen & Wife to W.D. LaMotte dated March 6<sup>th</sup> 1893 ...  
 Grant and Release: The N.W. Hill to S.P.R.R.C. dated Feb. 25<sup>th</sup> 1893 ...  
 Order of Board of Supervisors, Dec. 10<sup>th</sup> 1892 ...  
 Deed: S.P.R.R.C. to John P. Jones, Aug. 2<sup>nd</sup> 1893 ...  
 Deed: S.P.R.R.C. to Arcadia B. de Baker, Aug. 29<sup>th</sup> 1893 ...  
 Easement S.P.R.R.C. to City of Los Angeles for Highway Pico Blvd. ...  
 'B' Easement to City of Los Angeles for Santelle Blvd. GM0.89836-L15610

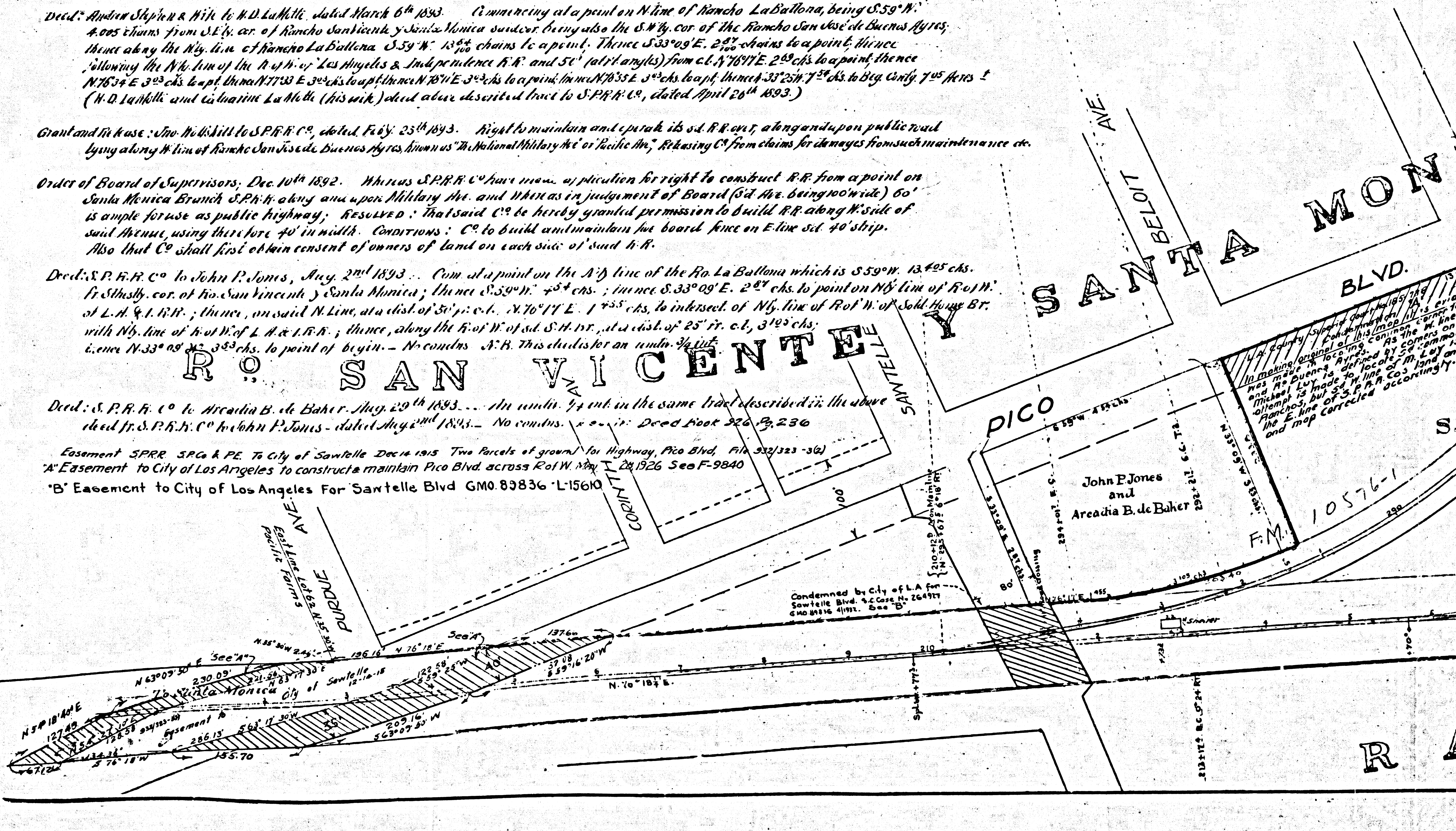
# HOME JUNCTION

Los Angeles County, California.  
 Scale: One Inch = 100 Feet.  
 1M21

Deed: Mrs. Rita B. de Aguilar to L.A. & I.R.R.C. dated May 18<sup>th</sup> 1877 ...  
 Deed: Tomasa Talamantis to L.A. & I.R.R.C. dated May 18<sup>th</sup> 1877 ...  
 Deed: Michael Kay and Wife to S.P.R.R.C. dated Feb. 25<sup>th</sup> 1893 ...  
 Deed: Andrew Stephen & Wife to W.D. LaMotte dated March 6<sup>th</sup> 1893 ...  
 Grant and Release: The N.W. Hill to S.P.R.R.C. dated Feb. 25<sup>th</sup> 1893 ...  
 Order of Board of Supervisors, Dec. 10<sup>th</sup> 1892 ...  
 Deed: S.P.R.R.C. to John P. Jones, Aug. 2<sup>nd</sup> 1893 ...  
 Deed: S.P.R.R.C. to Arcadia B. de Baker, Aug. 29<sup>th</sup> 1893 ...  
 Easement S.P.R.R.C. to City of Los Angeles for Highway Pico Blvd. ...  
 'B' Easement to City of Los Angeles for Santelle Blvd. GM0.89836-L15610

NOTE: French boundary coincides almost exactly with R.

ALL OF A3  
 F.M. 16317





# SOLDIER'S HOME

Los Angeles County, California.

Scale: One Inch = 100 Feet.

NEG. 399

C.S. B-576-2

F.M. 163117  
A2 OF A3

Deed Jan 16 1917 R.C. Gillis & wife to S.H.R.R. No Conds  
Rec. Jan 23 1917 Br. 6411 pg 168 Rec. L.H. Co.

NOTE: Ranch boundary coincides almost exactly with R.R. center line.

Check  
D.M. 6421-269

AMTA MONICA  
BLVD.

R.O. SAN JOSE DE BUENOS AYR

John E. Jones and  
Areadia B. de Raher

Michael Luy

Michael Luy

RANCH O

EXPOSITION BLVD. 50'

Opening of Sepulveda Blvd. Oct 1931  
G.M.O. 89272  
C.F. 1702

