

FILED MAP NO. 19351

SOUTH PASADENA.
Los Angeles County
Scale 100'-1" = 1"

1118

MONTEREY

125'-0" W. CAST IRON PIPE CURVE RT. 125'

8
9
10
11
12
13
14

sub.

ROAD

FILED MAP NO. 19351

MARENGO

31.2 125.91'

RT

28

516.38

126+92.95

stake

To Pasadena

N. 17° 40' E.

30

125+131 C.C. 3° 00' RT.

177+032 C.C. 7 1/2'

29

130+972 E.C. 7+1681 on Tangent

stake

AVE.

stake

BRENT

MISSION

To Shorb

30

MARENGO

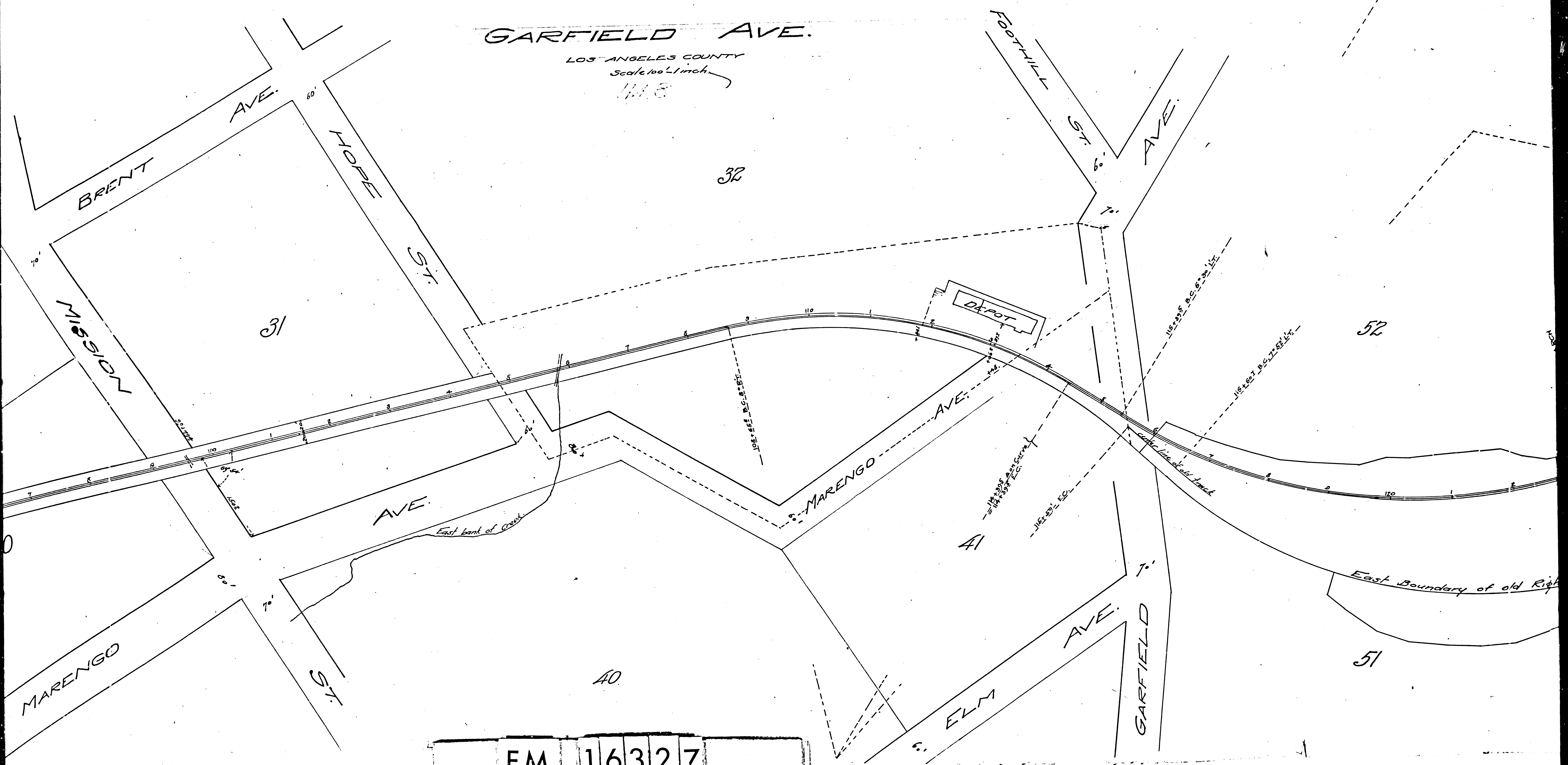
F.M. 16327

A 1 OF A 5

GARFIELD AVE.

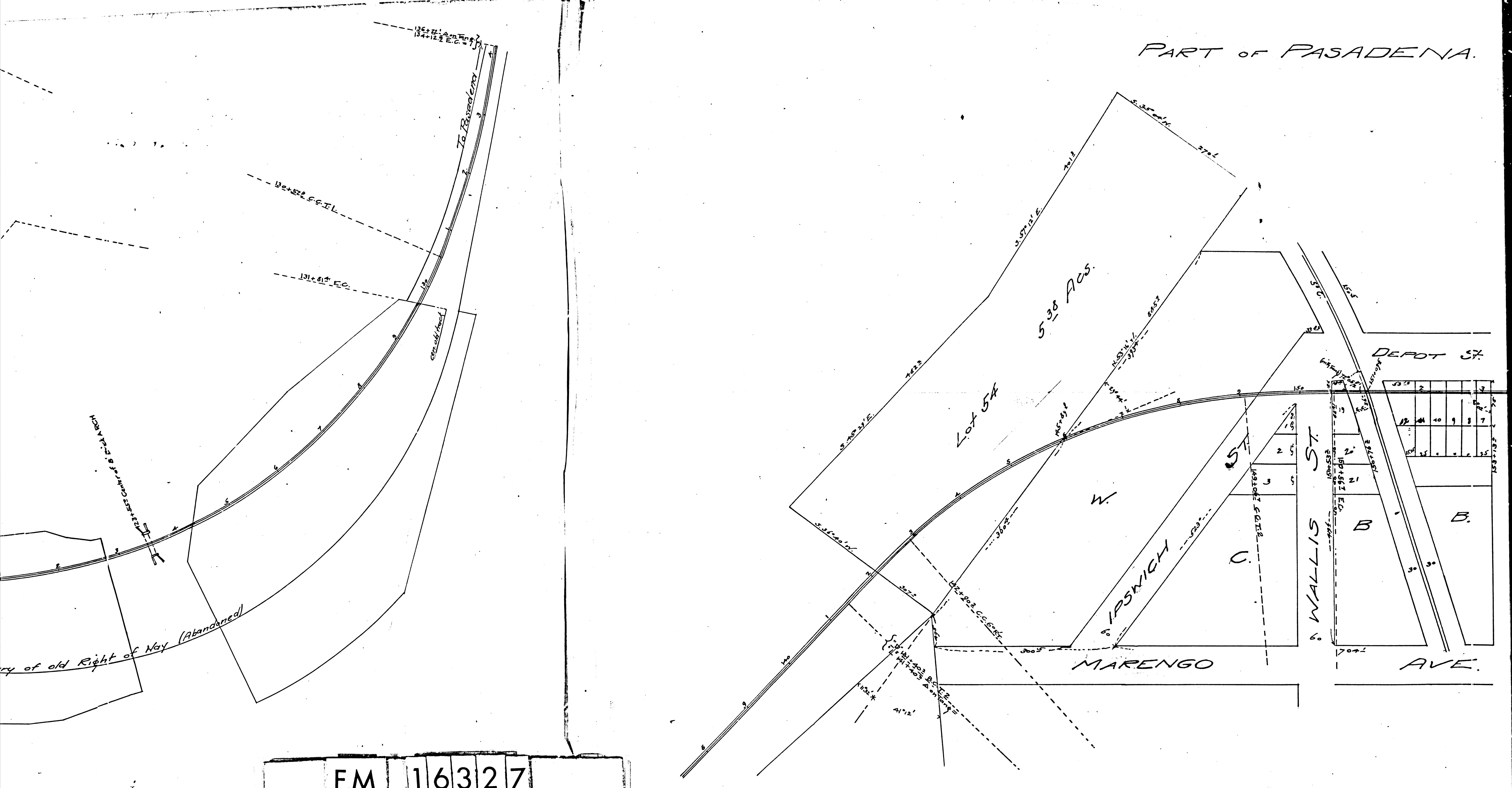
LOS ANGELES COUNTY
Scale 100' = 1 inch

1418



F.M.	1	6	3	2	7
A	2	OF	A	5	

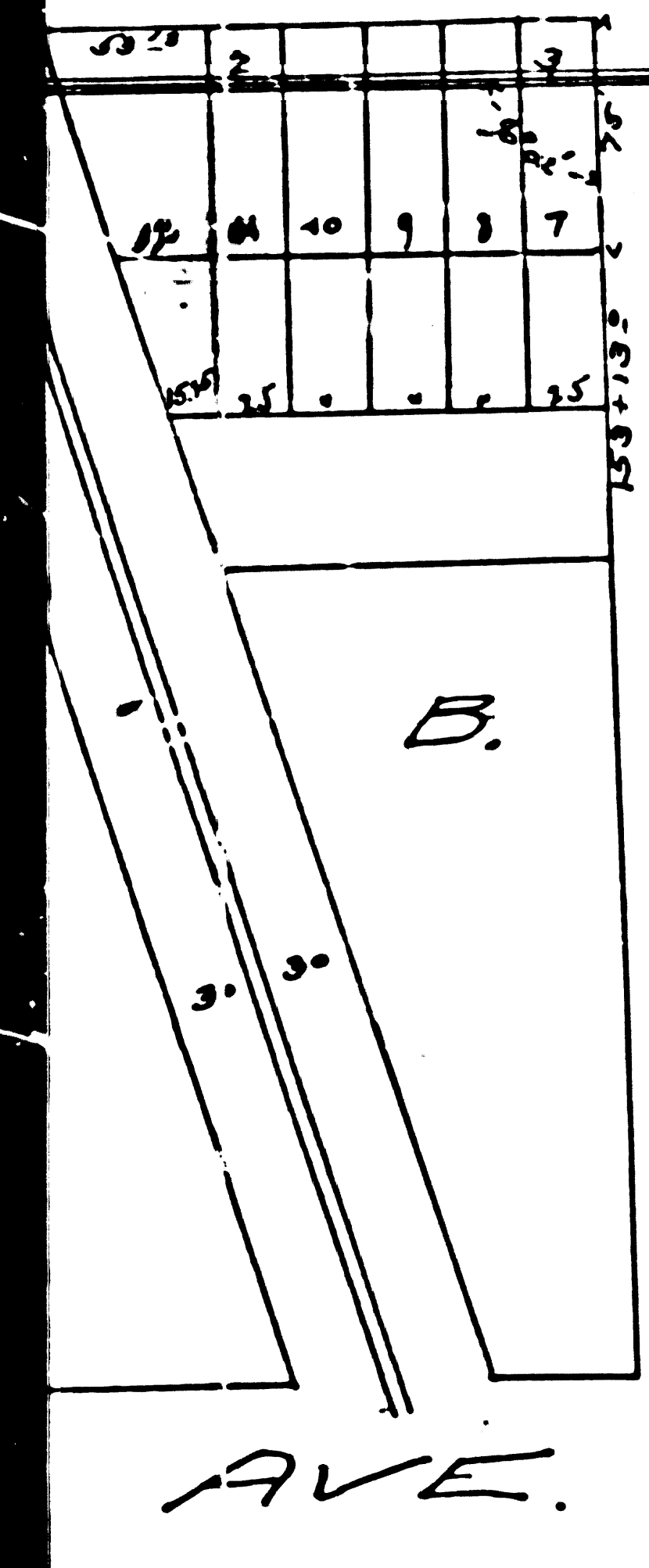
PART OF PASADENA.



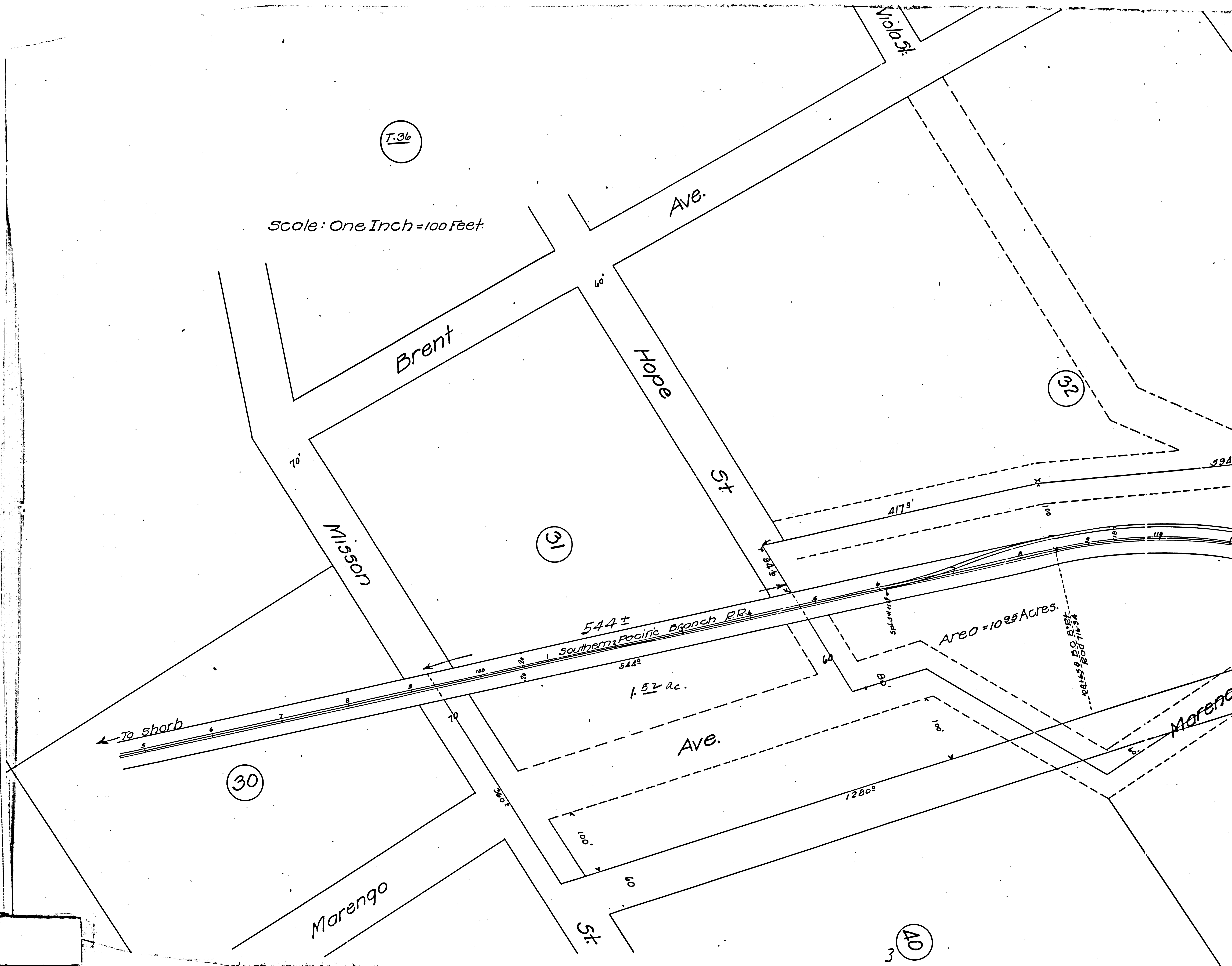
F.M.	1	6	3	2	7
A	3	OF	A	5	

VENA.

DEPT ST.



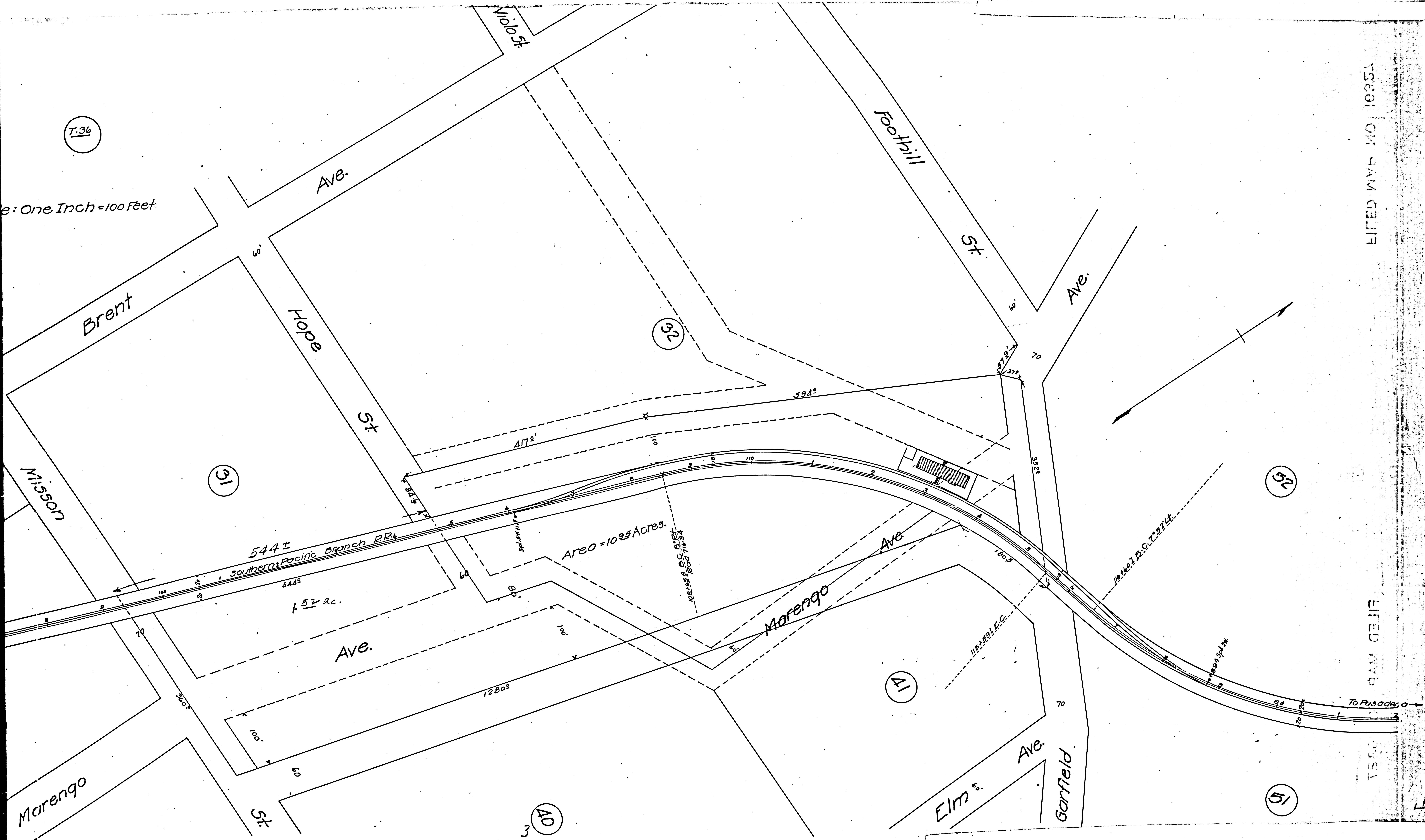
Scale: One Inch = 100 Feet



F.M.	1	6	3	2	7
A	4	OF	A	5	

Scale: One Inch = 100 Feet

T.36



FILED MAP NO. 10351

FILED MAP

1935

F.M.	1	6	3	2	7
A	5	OF	A	5	

51